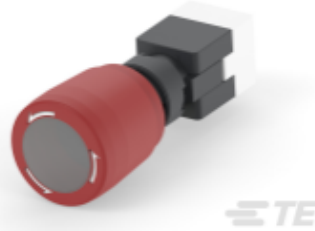


Key Features

- IP65 Rated
- IEC 60947-5-1 & IEC 60947-5-5
- 16mm mounting hole
- Simple Easy Mounting
- Solder to wire or quick connect disconnect terminals
- Gold Plating
- Illuminated & Non-Illuminated
- UL & TUV Agency Approval
- LED & Incandescent
- High Actuation Force

ALCOSWITCH Pushbutton Emergency Stop Switch
Illuminated and Non-Illuminated

PBES16L

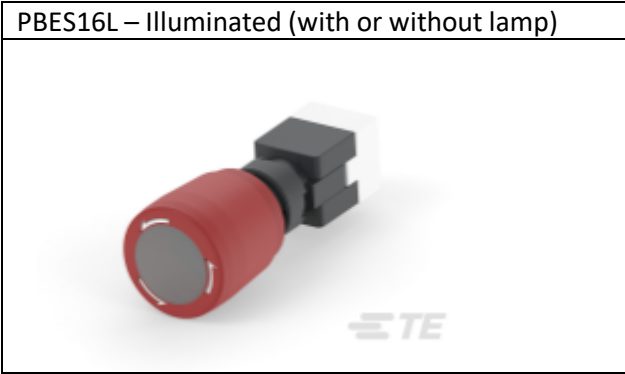
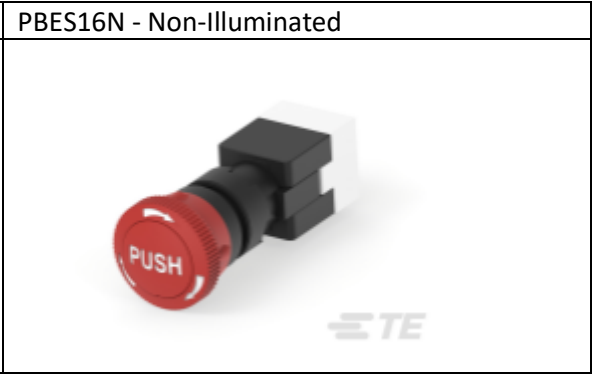


PBES16N

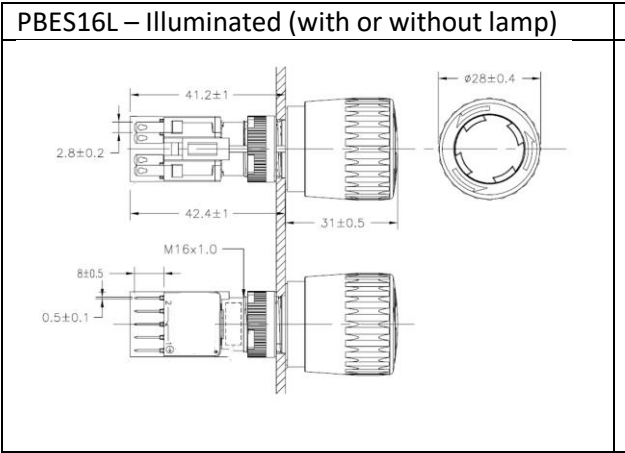
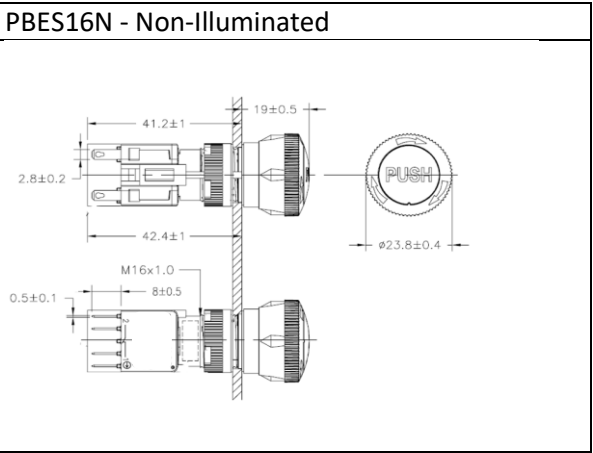
The PBES16 Series Pushbutton Emergency Stop Switch is offered as an Illuminated and Non-Illuminated switch. This series has multiple lighting options, agency approvals, and meets IEC 60947-5-1 & IEC 60947-5-5 standards. This switch is offered with two different actuator button styles. The PBES16 Series has a 20N actuation force for ruggedized applications and to avoid accidental actuations and is IP65 rated to withstand harsh environment.

Product Specification		
Mechanical Life		>100,000 Operations
Electrical Life		>50,000 Operations
Motion Tolerance		< 20 Operations/Minute (Mechanical and Electrical Life)
Degree of Protection		IP65
Panel Thickness		0.5mm to 5mm
Mounting Torque		1.1 N-m
Maximum Insulation Voltage		1500VAC 60Hz, 10mA, 1 Minute
Insulation Resistance		100MΩ @500 VDC, 100mA, 1 minute
Storage Temperature		-40°C to +85°C
Operating Temperature		-25°C to +55°C (-25°C to +70°C Without Lamp)
Contact Resistance		<= 50 mΩ (Initial)
Operating Forces		Push - Lock 20+0/-10N, Turn – Reset 0.06 N-m
Operating Travel	PBES16L	Push – Lock 3.6 ± 0/-0.6 mm, Turn – Reset CCW 30°
	PBES16N	Push – Lock 3.3 ± 0.3 mm, Turn – Reset CW 30°
Pollution Degree		3
Electrical Ratings		
Rated Insulation Voltage (Ui)		300V
Conventional Enclosed Thermal Current (Ithe)		5A
Rated Operational Voltage (Ue)		125 V250 V
Utilization Category		Rated Operational Current (Ie)
AC-15		31.5
DC-13		0.220.11

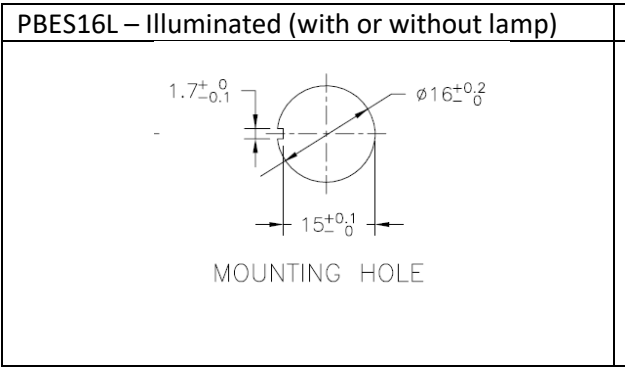
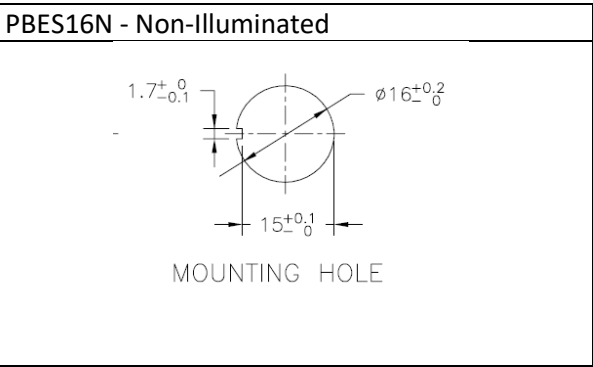
Switch Styles

PBES16L – Illuminated (with or without lamp)	PBES16N - Non-Illuminated
	

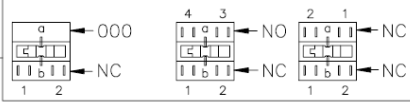
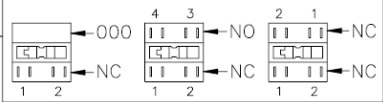
Actuator Button Shape

PBES16L – Illuminated (with or without lamp)	PBES16N - Non-Illuminated
	

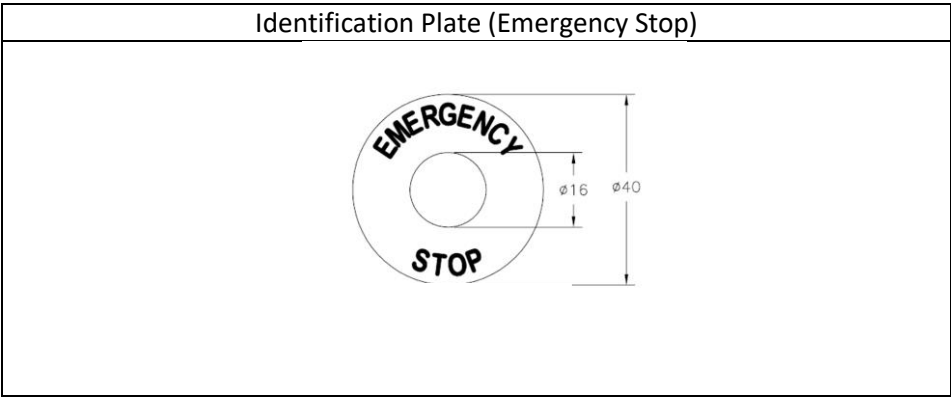
Mounting Hole Shape

PBES16L – Illuminated (with or without lamp)	PBES16N - Non-Illuminated
 <p>MOUNTING HOLE</p>	 <p>MOUNTING HOLE</p>

Switch Functions

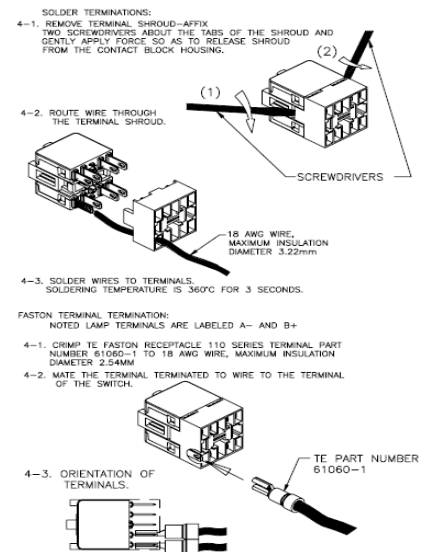
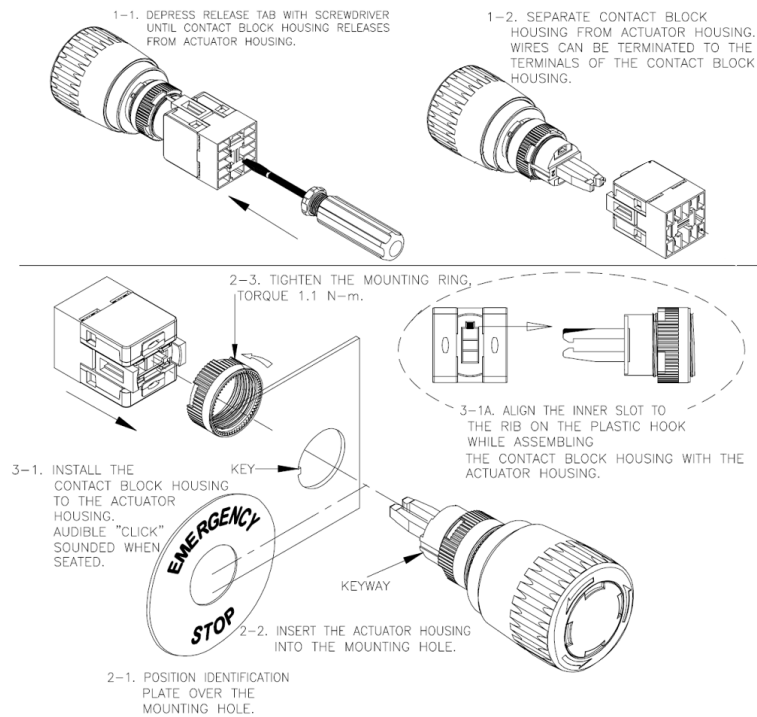
PBES16L – Illuminated (with or without lamp)	PBES16N - Non-Illuminated
<div>1: 000+1NC 2: 1NC+1NO 3: 1NC+1NC</div> <div></div>	<div>4: 000+1NC 5: 1NC+1NO 6: 1NC+1NC</div> <div></div>

Identification Plate

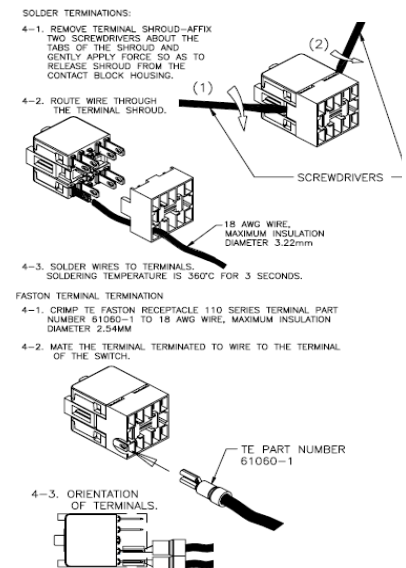
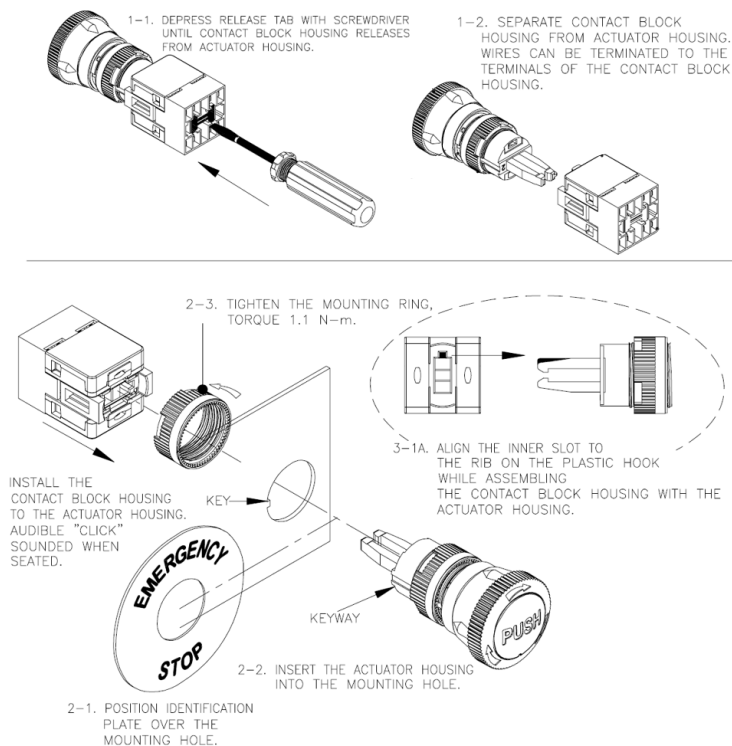


How to Install

PBES16L (With or Without Lamp)



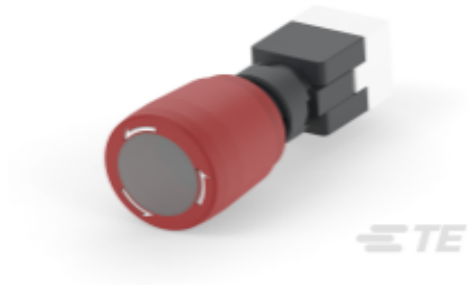
PBES16N Series (Non-Illuminated)





How to Order

PBES16L Illuminated Pushbutton Emergency Stop Switch
With or Without Lamp



Insert character to build TE Smart Part Number *

Model No.	Switch Function	Lamp Options	Actuator Color
PBES16L			R

Switch Function	
1	000 + NC
2	1NC + 1NO
3	1NC + 1NC

Lamp Options	
O	No Lamp
A	LED 6V DC 28mA
B	LED 12V DC 19mA
C	LED 24V DC 12mA
D	LED 12 to 24V AC/DC 11mA
H	INCANDESCENT 6V AC/DC 200mA
I	INCANDESCENT 14 V AC/DC 80mA
J	INCANDESCENT 28V AC/DC 40mA
K	INCANDESCENT 48V AC/DC 25mA
L	INCANDESCENT 60V AC/DC 20mA
M	INCANDESCENT 33V AC/DC 35mA
N	INCANDESCENT 6VAC/DC 40mA
O	INCANDESCENT 14V AC/DC 40mA

Actuator Color	
R	Red

*Complete part number list is on last page.



How to Order

PBES16N Non-Illuminated Pushbutton Emergency Stop Switch



Insert character to build TE Smart Part Number *

Model No.

PBES16N

Switch Function

Lamp Option

0

Actuator Color

R

Switch Function

4	000 + NC
5	1NC + 1NO
6	1NC + 1NC

Lamp Options

0	No Lamp
---	---------

Actuator Color

R	Red
---	-----

*Complete part number list is on last page.

Complete Part Number List

PBES16L Emergency Stop Series				
TE Smart Part Number	Function	Lamp Type	Product Description	TE Part Number
PBES16L1NR	000 + 1NC	INCANDESCENT 6VAC/DC 40mA	PBES16 28 INCA 6V AC/DC 40mA 000 1NC	2381880-1
PBES16L1HR		INCANDESCENT 6V AC/DC 200mA	PBES16 28 INCA 6V AC/DC 200mA 000 1NC	2381880-2
PBES16L1OR		INCANDESCENT 14V AC/DC 40mA	PBES16 28 INCA 14V AC/DC 40mA 000 1NC	2381880-3
PBES16L1IR		INCANDESCENT 14 V AC/DC 80mA	PBES16 28 INCA 14 V AC/DC 80mA 000 1NC	2381880-4
PBES16L1JR		INCANDESCENT 28V AC/DC 40mA	PBES16 28 INCA 28V AC/DC 40mA 000 1NC	2381880-5
PBES16L1MR		INCANDESCENT 33V AC/DC 35mA	PBES16 28 INCA 33V AC/DC 35mA 000 1NC	2381880-6
PBES16L1KR		INCANDESCENT 48V AC/DC 25mA	PBES16 28 INCA 48V AC/DC 25mA 000 1NC	2381880-7
PBES16L1LR		INCANDESCENT 60V AC/DC 20mA	PBES16 28 INCA 60V AC/DC 20 mA 000 1NC	2381880-8
PBES16L1AR	1NC + 1NO	LED 6V DC 28mA	PBES16 28 LED 6V DC 28mA 000 1NC	2381880-9
PBES16L1BR		LED 12V DC 19mA	PBES16 28 LED 12V DC 19mA 000 1NC	1-2381880-0
PBES16L1DR		LED 12 to 24V AC/DC 11mA	PBES16 28 LED 12 to 24V AC/DC/11mA 000 1NC	1-2381880-1
PBES16L1CR		LED 24V DC 12mA	PBES16 28 LED 24V DC 12 mA 000 1NC	1-2381880-2
PBES16L2NR		INCANDESCENT 6VAC/DC 40mA	PBES16 28 INCA 6VAC/DC 40mA 1NC 1NO	1-2381880-6
PBES16L2HR		INCANDESCENT 6V AC/DC 200mA	PBES16 28 INCA 6V AC/DC 200mA 1NC 1NO	1-2381880-7
PBES16L2OR		INCANDESCENT 14V AC/DC 40mA	PBES16 28 INCA 14V AC/DC 40mA 1NC 1NO	1-2381880-8
PBES16L2IR		INCANDESCENT 14 V AC/DC 80mA	PBES16 28 INCA 14 V AC/DC 80mA 1NC 1NO	1-2381880-9
PBES16L2JR	1NC + 1NC	INCANDESCENT 28V AC/DC 40mA	PBES16 28 INCA 28V AC/DC 40mA 1NC 1NO	2-2381880-0
PBES16L2MR		INCANDESCENT 33V AC/DC 35mA	PBES16 28 INCA 33V AC/DC 35mA 1NC 1NO	2-2381880-1
PBES16L2KR		INCANDESCENT 48V AC/DC 25mA	PBES16 28 INCA 48V AC/DC 25mA 1NC 1NO	2-2381880-2
PBES16L2LR		INCANDESCENT 60V AC/DC 20mA	PBES16 28 INCA 60V AC/DC 20 mA 1NC 1NO	2-2381880-3
PBES16L2AR		LED 6V DC 28mA	PBES16 28 LED 6V DC 28mA 1NC 1NO	2-2381880-4
PBES16L2BR		LED 12V DC 19mA	PBES16 28 LED 12V DC 19mA 1NC 1NO	2-2381880-5
PBES16L2DR		LED 12 to 24V AC/DC 11mA	PBES16 28 LED 12 to 24V AC/DC/11mA 1NC 1NO	2-2381880-6
PBES16L2CR		LED 24V DC 12mA	PBES16 28 LED 24V DC 12 mA 1NC 1NO	2-2381880-7
PBES16L3NR	1NC + 1NC	INCANDESCENT 6VAC/DC 40mA	PBES16 28 INCA 6VAC/DC 40mA 1NC 1NC	3-2381880-1
PBES16L3HR		INCANDESCENT 6V AC/DC 200mA	PBES16 28 INCA 6V AC/DC 200mA 1NC 1NC	3-2381880-2
PBES16L3OR		INCANDESCENT 14V AC/DC 40mA	PBES16 28 INCA 14V AC/DC 40mA 1NC 1NC	3-2381880-3
PBES16L3IR		INCANDESCENT 14 V AC/DC 80mA	PBES16 28 INCA 14 V AC/DC 80mA 1NC 1NC	3-2381880-4
PBES16L3JR		INCANDESCENT 28V AC/DC 40mA	PBES16 28 INCA 28V AC/DC 40mA 1NC 1NC	3-2381880-5
PBES16L3MR		INCANDESCENT 33V AC/DC 35mA	PBES16 28 INCA 33V AC/DC 35mA 1NC 1NC	3-2381880-6
PBES16L3KR		INCANDESCENT 48V AC/DC 25mA	PBES16 28 INCA 48V AC/DC 25mA 1NC 1NC	3-2381880-7
PBES16L3LR		INCANDESCENT 60V AC/DC 20mA	PBES16 28 INCA 60V AC/DC 20 mA 1NC 1NC	3-2381880-8
PBES16L3AR	1NC + 1NC	LED 6V DC 28mA	PBES16 28 LED 6V DC 28mA 1NC 1NC	3-2381880-9
PBES16L3BR		LED 12V DC 19mA	PBES16 28 LED 12V DC 19mA 1NC 1NC	4-2381880-0
PBES16L3DR		LED 12 to 24V AC/DC 11mA	PBES16 28 LED 12 to 24V AC/DC/11mA 1NC 1NC	4-2381880-1
PBES16L3CR		LED 24V DC 12mA	PBES16 28 LED 24V DC 12 mA 1NC 1NC	4-2381880-2
PBES16L10R	000 + 1NC	NO LAMP	PBES16 28 NO LAMP 000 1NC	4-2381880-6
PBES16L20R	1NC + 1NO	NO LAMP	PBES16 28 NO LAMP 1NC 1NO	4-2381880-7
PBES16L30R	1NC + 1NC	NO LAMP	PBES16 28 NO LAMP 1NC 1NC	4-2381880-8
PBES16N Emergency Stop Series				
TE Smart Part Number	Function	Lamp Type	Product Description	TE Part Number
PBES16N40R	000 + 1NC	NO LAMP	PBES16 23.8 RB NO LAMP 000 1NC	2381881-1
PBES16N50R	1NC + 1NO	NO LAMP	PBES16 23.8 RB NO LAMP 1NC 1NO	2381881-2
PBES16N60R	1NC + 1NC	NO LAMP	PBES16 23.8 RB NO LAMP 1NC 1NC	2381881-3

Mouser Electronics

Authorized Distributor

Click to View Pricing, Inventory, Delivery & Lifecycle Information:

TE Connectivity:

[1-2381880-0](#) [1-2381880-1](#) [1-2381880-2](#) [1-2381880-6](#) [1-2381880-7](#) [2-2381880-1](#) [4-2381880-0](#) [4-2381880-1](#) [4-2381880-2](#) [4-2381880-6](#) [4-2381880-7](#) [4-2381880-8](#) [3-2381880-4](#) [3-2381880-5](#) [3-2381880-6](#) [3-2381880-7](#) [3-2381880-8](#) [3-2381880-9](#) [2381881-2](#) [2381881-3](#) [3-2381880-0](#) [3-2381880-1](#) [3-2381880-2](#) [3-2381880-3](#) [2381880-5](#) [2381880-6](#) [2381880-7](#) [2381880-8](#) [2381880-9](#) [2381881-1](#) [2-2381880-8](#) [2-2381880-9](#) [2381880-1](#) [2381880-2](#) [2381880-3](#) [2381880-4](#) [2-2381880-2](#) [2-2381880-3](#) [2-2381880-4](#) [2-2381880-5](#) [2-2381880-6](#) [2-2381880-7](#) [PBES16L10R](#) [PBES16N50R](#) [PBES16N60R](#) [PBES16L3KR](#) [PBES16L3LR](#) [PBES16L3MR](#) [PBES16L3NR](#) [PBES16L3OR](#) [PBES16N40R](#) [PBES16L3BR](#) [PBES16L3CR](#) [PBES16L3DR](#) [PBES16L3HR](#) [PBES16L3IR](#) [PBES16L3JR](#) [PBES16L2KR](#) [PBES16L2LR](#) [PBES16L2MR](#) [PBES16L2NR](#) [PBES16L30R](#) [PBES16L3AR](#) [PBES16L20R](#) [PBES16L2AR](#) [PBES16L2BR](#) [PBES16L2CR](#) [PBES16L2DR](#) [PBES16L2HR](#) [PBES16L1JR](#) [PBES16L1KR](#) [PBES16L1LR](#) [PBES16L1MR](#) [PBES16L1NR](#) [PBES16L1OR](#) [PBES16L1AR](#) [PBES16L1BR](#) [PBES16L1CR](#) [PBES16L1DR](#) [PBES16L1HR](#) [PBES16L1IR](#)