

THIS DRAWING IS UNPUBLISHED.

RELEASED FOR PUBLICATION

20

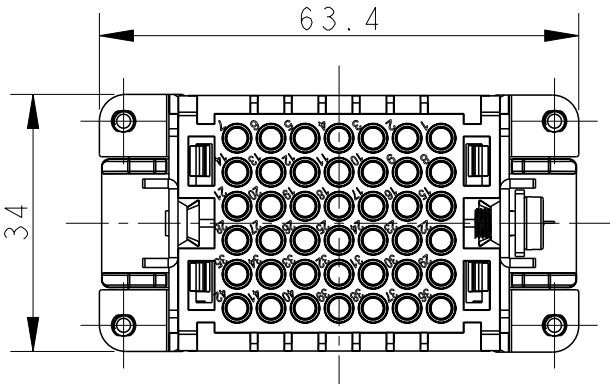
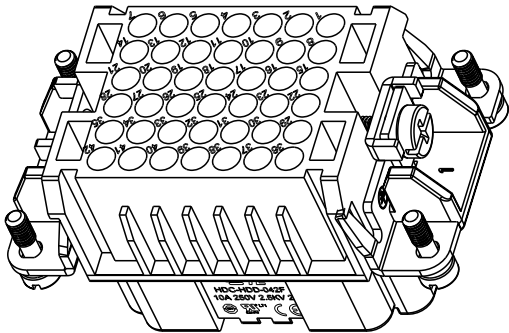
© COPYRIGHT 20

BY -

ALL RIGHTS RESERVED.

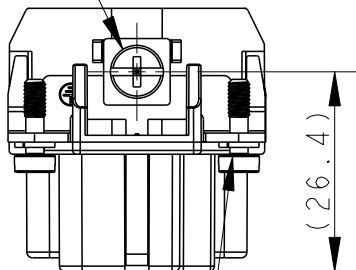
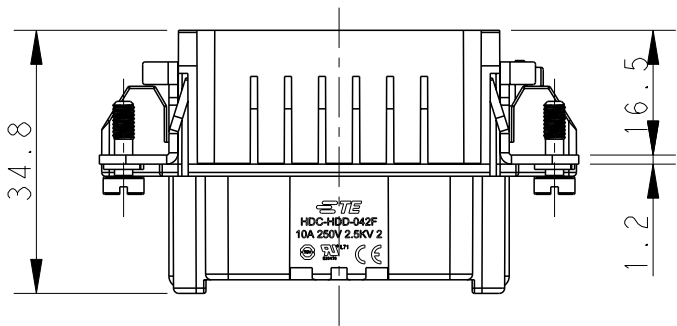
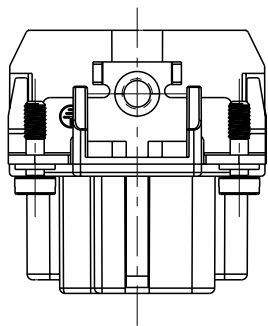
REVISIONS

P	LTR	DESCRIPTION	DATE	DWN	APVD
	B	ECR-15-013292	19MAR2015	DL	CW
	B1	ECR-16-018198	12FEB2017	QY	CW
	B2	ECR-19-012652	21SEP2019	BS	CW
	C	ECR-21-105887	26JUL2021	BS	CW

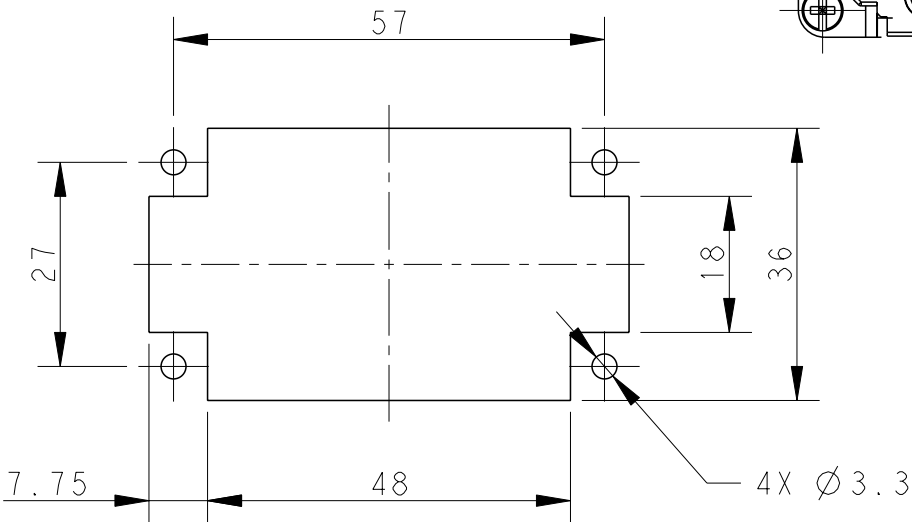
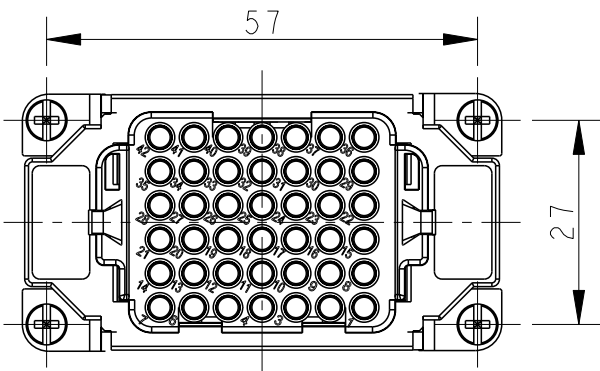


TYPE-1:T2030422201-000 TE LOGO
类 型-1:T2030422201-000 TE LOGO

M4 SCREW RECOMMENDED
TIGHTENING TORQUE 1.2Nm
M4螺丝, 推荐锁紧力矩1.2Nm



4 X M3 SCREW RECOMMENDED
TIGHTENING TORQUE 0.5Nm
4X M3螺丝, 推荐锁紧力矩0.5Nm




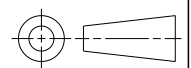
PANEL CUT OUT FOR INSERTS FOR USING
WITHOUT HOODS/HOUSINGS
不使用防护外壳时芯件的安装开孔图

NOTES:

- TECHNICAL CHARACTERISTICS:
INSULATION MATERIAL: PC
RATED VOLTAGE: 250 V
RATED CURRENT: 10 A
INSULATION RESISTANCE: $\geq 400M\Omega$
RATED IMPULSE VOLTAGE: 2.5 KV
POLLUTION DEGREE: 2
FLAMMABILITY: UL94V-0
MATING CYCLES: 500 CYCLES
WIRE RANGE: 0.14-2.5 mm² (26-14 AWG)
CONTACT TYPE: CRIMP CONTACT
- CONTACT NEED TO BE ORDERED SEPARATELY.
(ORDER No. REFER TO DRAWING: T20200X20XX000)

注释:

- 技术参数:
绝缘材料: PC
额定电压: 250V
额定电流: 10A
绝缘电阻: $\geq 400M\Omega$
额定脉冲电压: 2.5 KV
污染等级: 2
阻燃等级: UL94V-0
插拔次数: 500次
接线范围: 0.14-2.5 mm² (26-14 AWG)
接线类型: 冷压接
- 端子需要单独订购.
(订货号参考图面: T20200X20XX000)

THIS DRAWING IS A CONTROLLED DOCUMENT.		DWN DAVID LI 18MAR2015		 TE Connectivity			
DIMENSIONS: mm		CHK CHRIS WANG 18MAR2015		NAME HDD-042-F			
		APVD XU XIANG 18MAR2015					
		PRODUCT SPEC 108-137043					
MATERIAL - -	TOLERANCES UNLESS OTHERWISE SPECIFIED: 0 PLC ±- 1 PLC ±- 2 PLC ±- 3 PLC ±- 4 PLC ±- ANGLES ±- FINISH - -	APPLICATION SPEC 114-137043		SIZE A3	CAGE CODE -	DRAWING NO C-T2030422201000	RESTRICTED TO
		WEIGHT -					
		CUSTOMER DRAWING				SCALE 1:1	

THIS DRAWING IS UNPUBLISHED.

RELEASED FOR PUBLICATION 20

© COPYRIGHT 20 BY - ALL RIGHTS RESERVED.

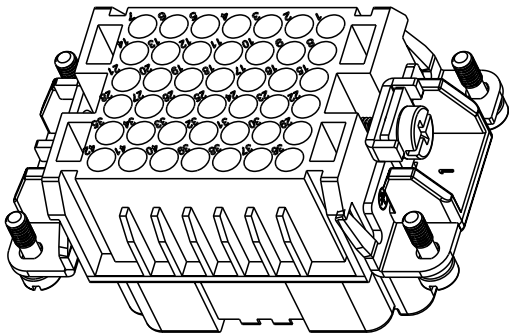
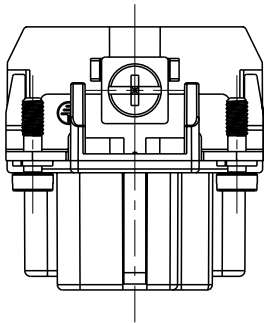
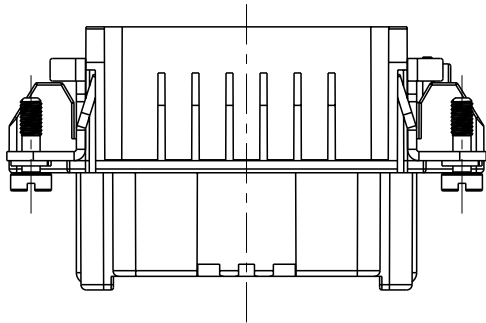
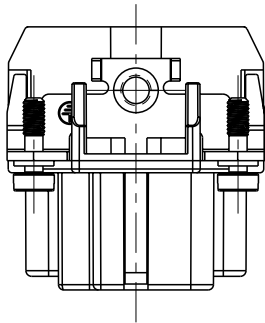
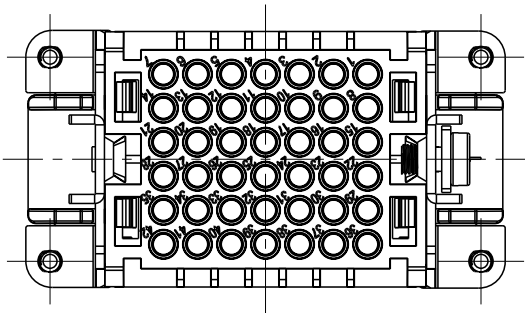
REVISIONS

P	LTR	DESCRIPTION	DATE	DWN	APVD
	-	SEE SHEET 1	-	-	-

NOTES:

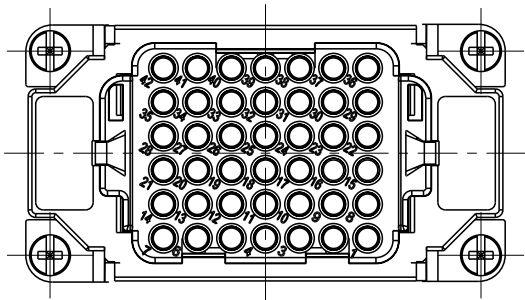
SEE SHEET 1

注释：
见页 1


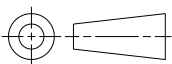


ALL DIMENSIONS ARE SAME AS TYPE 1,
EXCEPT THOSE DEFINED IN THIS TYPE.
除了在本类型中定义的尺寸外，其它尺寸同类型 1

TYPE-2:T2030422201-001 STAINLESS STEEL SCREW,NO LOGO
类 型-2:T2030422201-001 不锈钢螺丝,无LOGO



T2030422201-001	HDD-042-F	HDD-042 FEMALE INSERT, CRIMPING SPLIT TYPE, STAINLESS STEEL SCREW,NO LOGO HDD-042冷压针分体式母插,不锈钢螺丝,无LOGO	TYPE-2 类 型-2
T2030422201-000	HDD-042-F	HDD-042 FEMALE INSERT, CRIMPING SPLIT TYPE HDD-042冷压针分体式母插	TYPE-1 类 型-1
PART NUMBER 料 号	PART DESCRIPTION 描 述		TYPE 类 型

THIS DRAWING IS A CONTROLLED DOCUMENT.		DWN 18MAR2015 DAVID LI		 TE Connectivity			
		CHK 18MAR2015 CHRIS WANG					
DIMENSIONS: mm		TOLERANCES UNLESS OTHERWISE SPECIFIED: 0 PLC ±- 1 PLC ±- 2 PLC ±- 3 PLC ±- 4 PLC ±- ANGLES ±-		APVD 18MAR2015 XU XIANG		NAME HDD-042-F	
				PRODUCT SPEC 108-137043			
				APPLICATION SPEC 114-137043			
				WEIGHT -			
				MATERIAL - -		FINISH - -	
		CUSTOMER DRAWING		SIZE A3	CAGE CODE -	DRAWING NO G-T2030422201000	RESTRICTED TO
				SCALE 1:1	SHEET 2 OF 2	REV C	

Mouser Electronics

Authorized Distributor

Click to View Pricing, Inventory, Delivery & Lifecycle Information:

[TE Connectivity:](#)

[HDD-042-F](#)