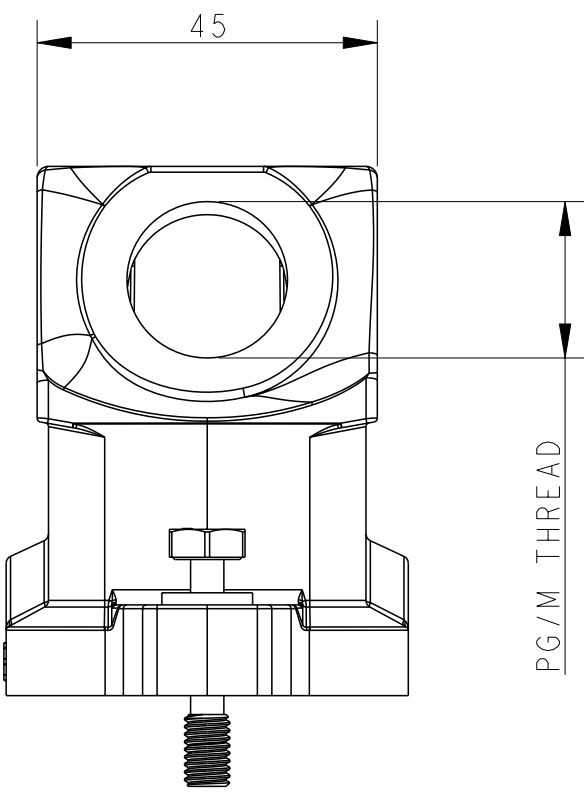
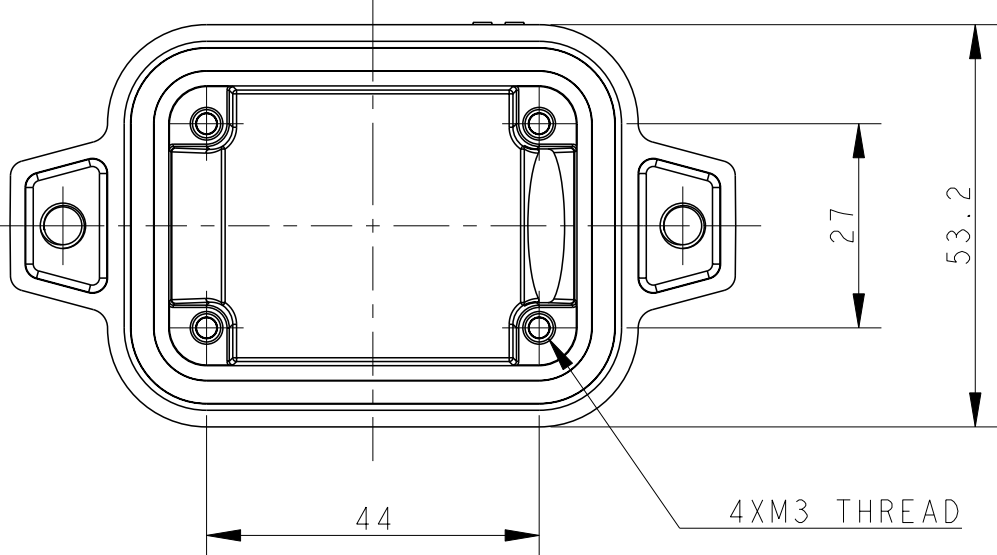
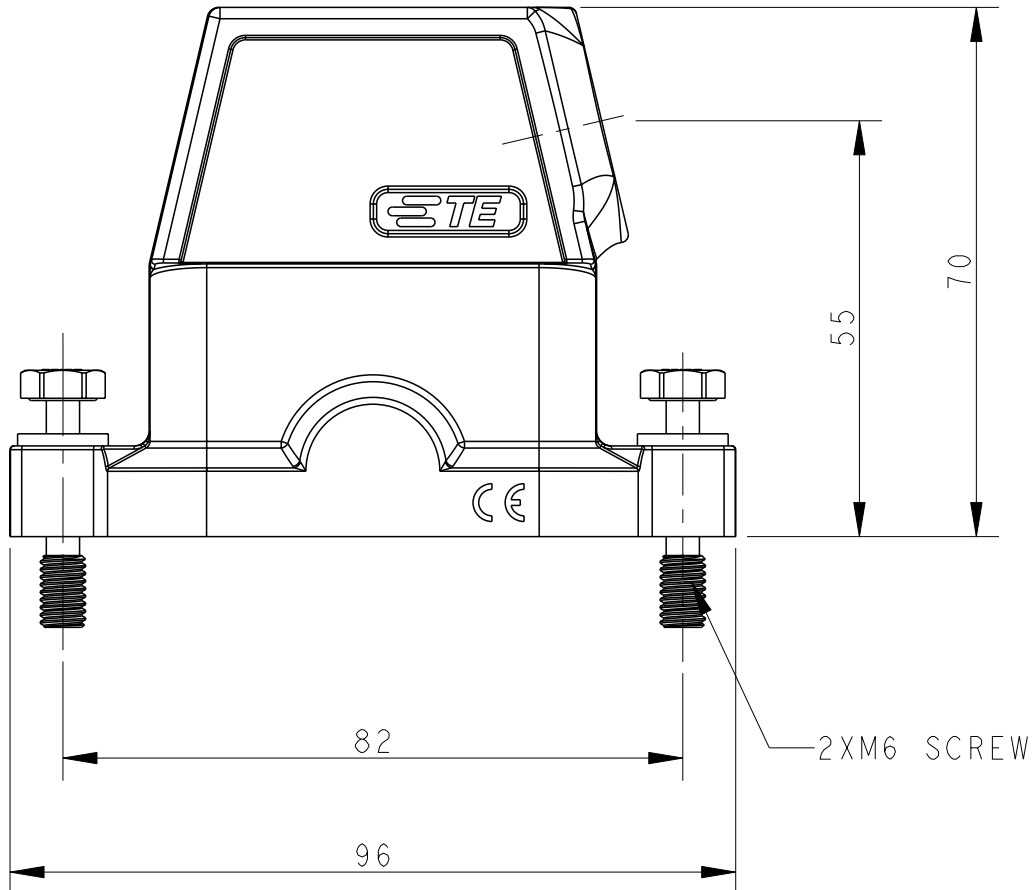


REVISIONS					
P	LTR	DESCRIPTION	DATE	DWN	APVD
	A	INITIAL RELEASE	21MAY2015	GY	CW
	A1	ECR-18-009564	14SEP2018	CD	CW
	B	ECR-20-011774	30APR2021	BS	CW

D

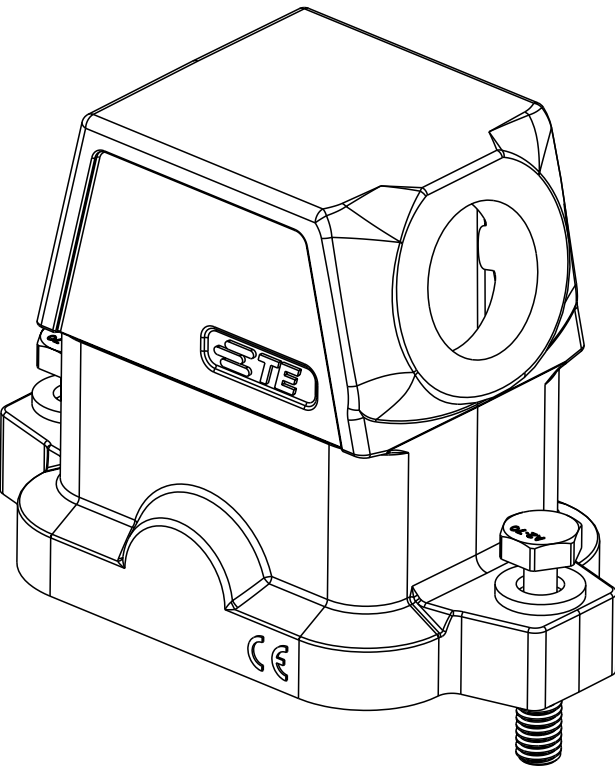
printed on 30 Apr 2021 15:24 (China Standard Time) from IE236667

A



NOTES:  
1. TECHNICAL CHARACTERISTICS:  
HOOD MATERIAL: DIE CAST ALUMINIUM ALLOY  
SURFACE TREATMENT: SEE TABLE  
DEGREE OF PROTECTION: IP68 (MATED)

注释  
1. 技术参数:  
壳体材料: 铝合金  
表面处理: 见表格  
防护等级: IP68 (配合)


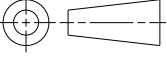


D

C

B

A

THIS DRAWING IS A CONTROLLED DOCUMENT.		DWN Gino Yao	21MAY2015	 TE Connectivity		
DIMENSIONS:		CHK Chris Wang	21MAY2015			
mm	TOLERANCES UNLESS OTHERWISE SPECIFIED:	APVD Xiang Xu	21MAY2015	NAME H6BPR-TSHC-PG/M		
	0 PLC	±		PRODUCT SPEC		
	1 PLC	±		108-137014		
	2 PLC	±		APPLICATION SPEC		
	3 PLC	±		114-137014		
MATERIAL	4 PLC	±		WEIGHT		
	ANGLES	±		-		
-	FINISH	-		Customer Drawing		
				SIZE A2	CAGE CODE -	DRAWING NO T191206XXXXX00
				RESTRICTED TO -		
				SCALE 1:1	SHEET 1 OF 2	REV B

4

3

THIS DRAWING IS UNPUBLISHED.

RELEASED FOR PUBLICATION

20

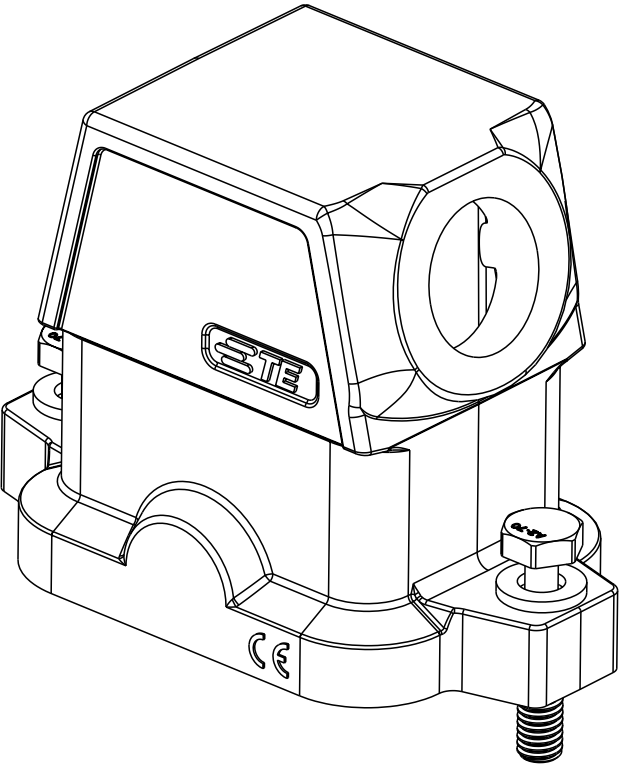
© COPYRIGHT 20

BY -

ALL RIGHTS RESERVED.

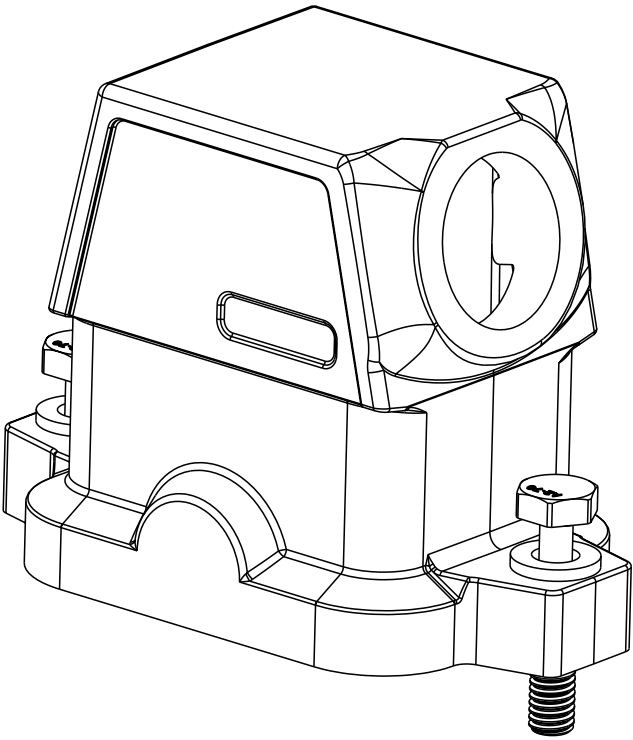
TYPE 1

类型 I



TYPE 2: NO LOGO

类型: 无LOGO



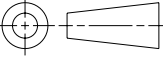
THIS TYPE IS SAME AS TYPE 1, ONLY NO LOGO

此类型同类型 I, 只是无LOGO

T1912062125-001	POWDER COATED, DEEP GRAY 表面喷涂, 深灰色	H6BPR-TSHC-M25	H6BPR HOOD,CENTER LOCKING,SIDE ENTRY M25,POWDER COATED,DEEP GREY,NO LOGO H6BPR上壳,中部锁定,侧出M25,深灰色粉末喷涂,无LOGO	M25	TYPE 2 类型2
T1912062125-000	POWDER COATED, GRAY 表面喷涂, 灰色	H6BPR-TSHC-M25	H6BPR HOOD,CENTER LOCKING,SIDE ENTRY M25,POWDER COATED,GREY H6BPR上壳,中部锁定,侧出M25,灰色粉末喷涂	M25	TYPE 1 类型 I
T1912062121-000	POWDER COATED, GRAY 表面喷涂, 灰色	H6BPR-TSHC-PG21	H6BPR HOOD,CENTER LOCKING,SIDE ENTRY PG21,POWDER COATED,GREY H6BPR上壳,中部锁定,侧出PG21,灰色粉末喷涂	PG21	
T1912062120-000	POWDER COATED, GRAY 表面喷涂, 灰色	H6BPR-TSHC-M20	H6BPR HOOD,CENTER LOCKING,SIDE ENTRY M20,POWDER COATED,GREY H6BPR上壳,中部锁定,侧出M20,灰色粉末喷涂	M20	
T1912062116-000	POWDER COATED, GRAY 表面喷涂, 灰色	H6BPR-TSHC-PG16	H6BPR HOOD,CENTER LOCKING,SIDE ENTRY PG16,POWDER COATED,GREY H6BPR上壳,中部锁定,侧出PG16,灰色粉末喷涂	PG16	
T1912061125-000	POWDER COATED, SILVER WHITE 表面喷涂, 银白色	H6BPR-TSHC-M25	H6BPR HOOD,CENTER LOCKING,SIDE ENTRY M25,POWDER COATED,SILVER WHITE H6BPR上壳,中部锁定,侧出M25,银白色粉末喷涂	M25	
T1912061121-000	POWDER COATED, SILVER WHITE 表面喷涂, 银白色	H6BPR-TSHC-PG21	H6BPR HOOD,CENTER LOCKING,SIDE ENTRY PG21,POWDER COATED,SILVER WHITE H6BPR上壳,中部锁定,侧出PG21,银白色粉末喷涂	PG21	
T1912061120-000	POWDER COATED, SILVER WHITE 表面喷涂, 银白色	H6BPR-TSHC-PG21	H6BPR HOOD,CENTER LOCKING,SIDE ENTRY M20,POWDER COATED,SILVER WHITE H6BPR上壳,中部锁定,侧出M20,银白色粉末喷涂	M20	
T1912061116-000	POWDER COATED, SILVER WHITE 表面喷涂, 银白色	H6BPR-TSHC-PG16	H6BPR HOOD,CENTER LOCKING,SIDE ENTRY PG16,POWDER COATED,SILVER WHITE H6BPR上壳,中部锁定,侧出PG16,银白色粉末喷涂	PG16	
T1912060125-000	POWDER COATED, BLACK 表面喷涂, 黑色	H6BPR-TSHC-M25	H6BPR HOOD,CENTER LOCKING,SIDE ENTRY M25,POWDER COATED,BLACK H6BPR上壳,中部锁定,侧出M25,黑色粉末喷涂	M25	
T1912060121-000	POWDER COATED, BLACK 表面喷涂, 黑色	H6BPR-TSHC-PG21	H6BPR HOOD,CENTER LOCKING,SIDE ENTRY PG21,POWDER COATED,BLACK H6BPR上壳,中部锁定,侧出PG21,黑色粉末喷涂	PG21	
T1912060120-000	POWDER COATED, BLACK 表面喷涂, 黑色	H6BPR-TSHC-M20	H6BPR HOOD,CENTER LOCKING,SIDE ENTRY M20,POWDER COATED,BLACK H6BPR上壳,中部锁定,侧出M20,黑色粉末喷涂	M20	
T1912060116-000	POWDER COATED, BLACK 表面喷涂, 黑色	H6BPR-TSHC-PG16	H6BPR HOOD,CENTER LOCKING,SIDE ENTRY PG16,POWDER COATED,BLACK H6BPR上壳,中部锁定,侧出PG16,黑色粉末喷涂	PG16	
PART NUMBER 料号	SURFACE TREATMEN 表面处理	PART DESCRIPTION 描述		PG/M THREAD PG/M 螺纹	TYPE 类型

THIS DRAWING IS A CONTROLLED DOCUMENT.

DIMENSIONS:  
mm



MATERIAL  
-

TOLERANCES UNLESS OTHERWISE SPECIFIED:

0 PLC ±-

1 PLC ±-

2 PLC ±-

3 PLC ±-

4 PLC ±-

ANGLES ±-

FINISH -

DWN  
Gino.Yao 21MAY2015

CHK  
Chris.Wang 21MAY2015


APVD  
Xiang.Xu 21MAY2015

PRODUCT SPEC  
108-137014

APPLICATION SPEC  
114-137014

WEIGHT  
-

Customer Drawing

TE Connectivity

NAME  
H6BPR-TSHC-PG/M

SIZE  
A2

CAGE CODE  
-

DRAWING NO  
T191206XXXXX00

RESTRICTED TO  
-

SCALE  
1:1

SHEET  
2 OF 2

REV  
B

1

2

3

4

REVISED

DATE

BY

REASON

SEE SHEET 1

-

-

-

1471-9 (3/13)

# Mouser Electronics

Authorized Distributor

Click to View Pricing, Inventory, Delivery & Lifecycle Information:

[TE Connectivity:](#)

[T1912061120-000](#)