

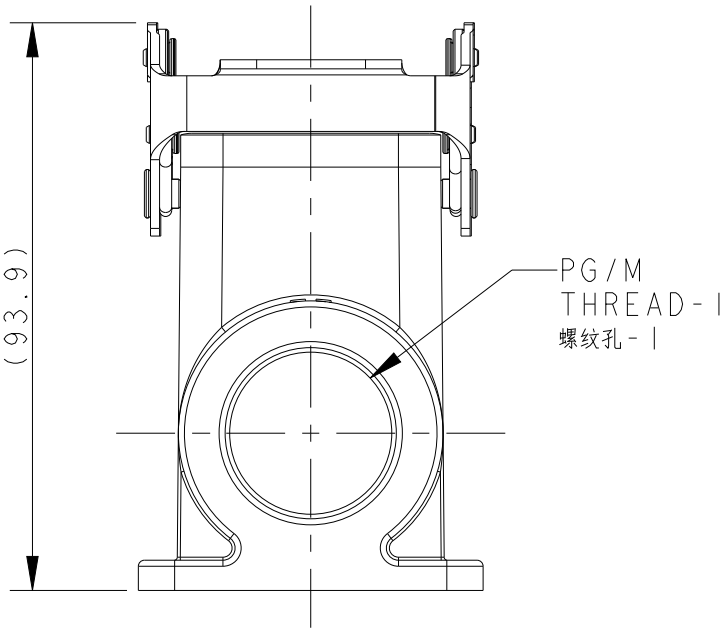
| REVISIONS | | | | | |
|-----------|-----|---------------|-----------|-----|------|
| P | LTR | DESCRIPTION | DATE | DWN | APVD |
| | A | INITIAL | 30DEC2016 | DL | CW |
| | A1 | ECR-16-018258 | 30DEC2016 | BS | CW |
| | B | ECR-18-016391 | 22OCT2018 | GY | CW |
| | C | ECR-20-014876 | 21JUL2021 | WOR | CW |

NOTES:

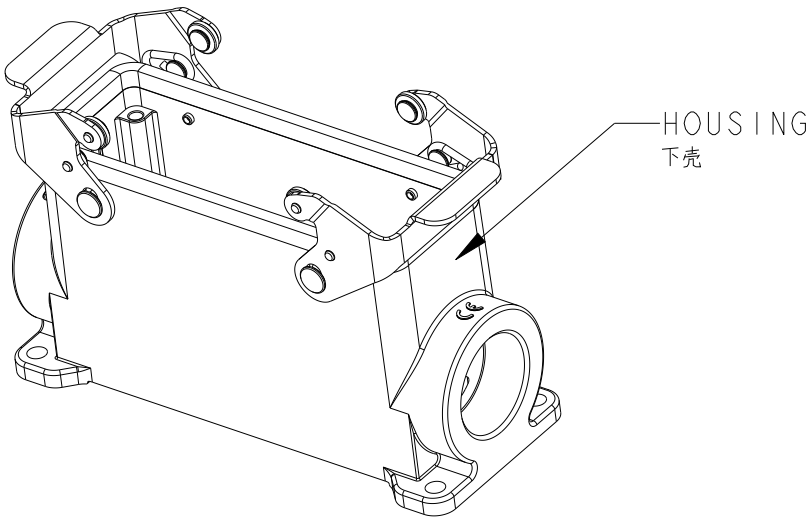
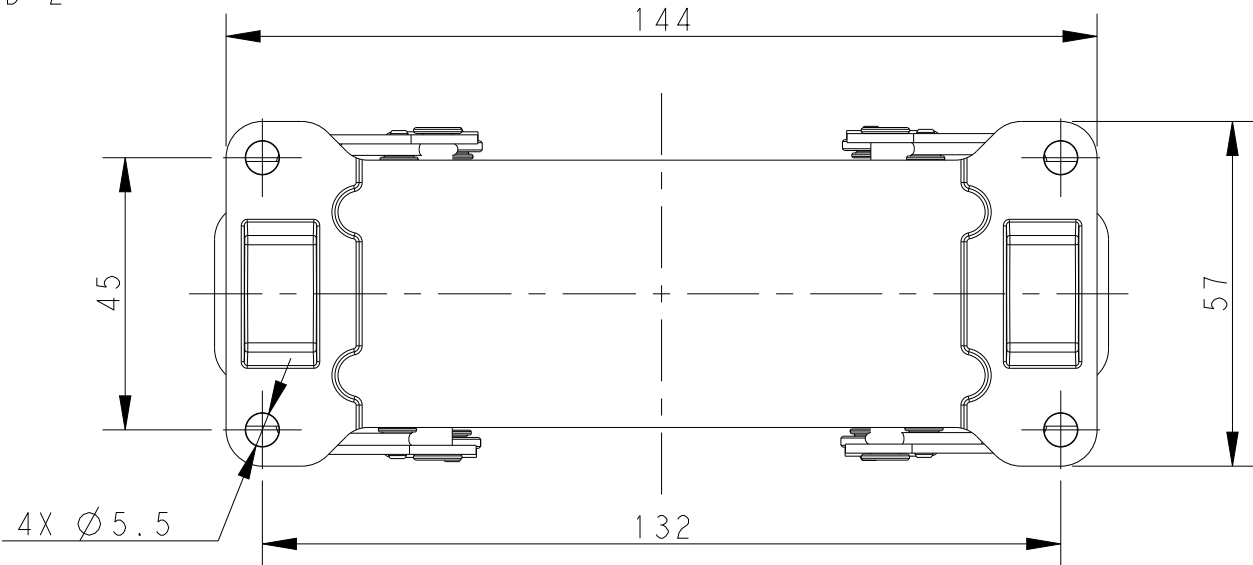
1. TECHNICAL CHARACTERISTICS:
HOUSING MATERIAL: DIE CAST ALUMINIUM ALLOY
HOUSING SURFACE: POWDER COATED, GREY
DEGREE OF PROTECTION: IP65 (MATED)

注释：



技术参数：
下壳材料： 铝合金
下壳表面处理： 灰色粉末喷涂
防护等级： IP65(配合)



PG/M
THREAD-2
螺纹孔-2

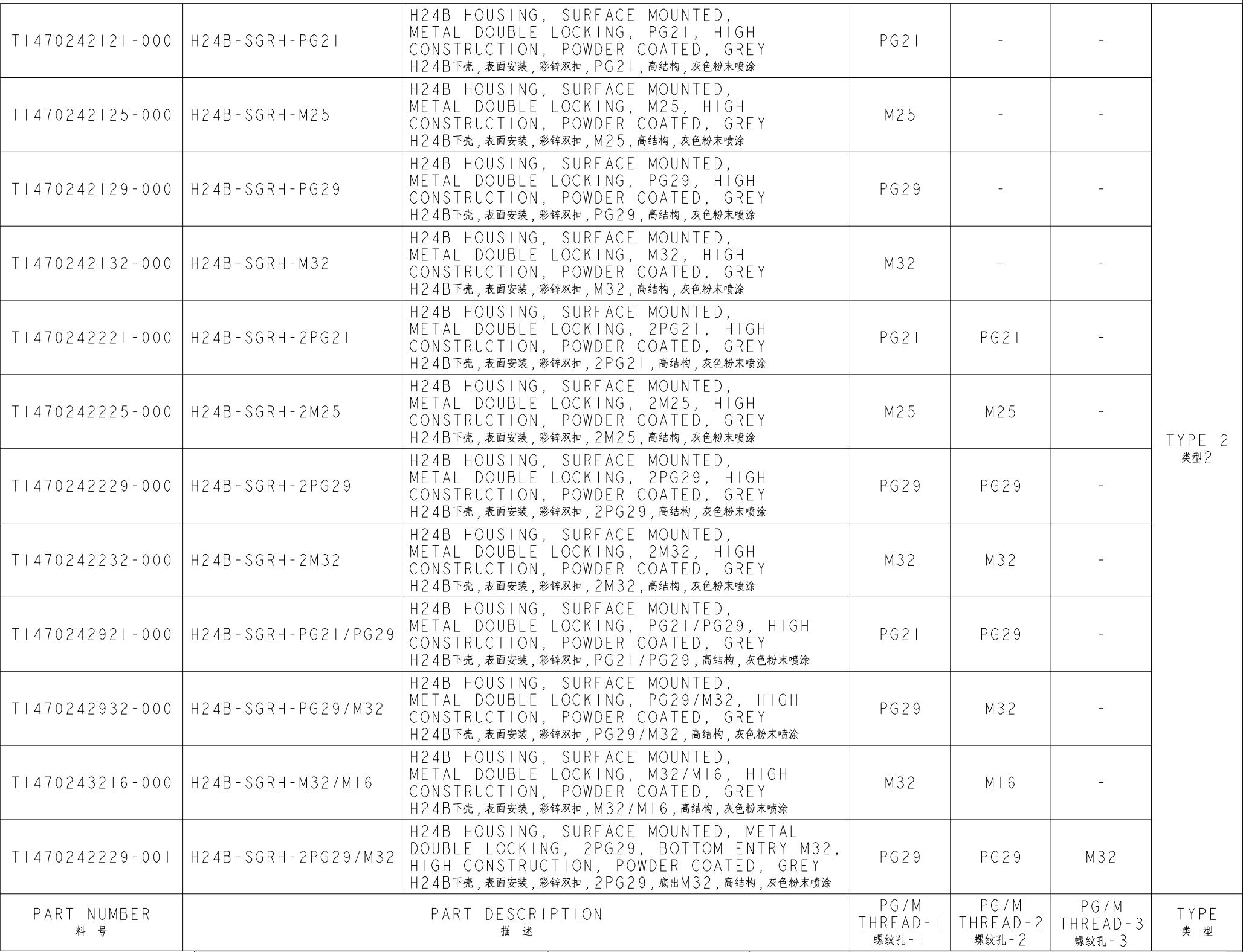


| | | | | | |
|--------------------|-------------------------|---|---------------------------|---------------------------|---------------|
| T1470241121-000 | H24B-SGRHS-PG21 | H24B HOUSING, SURFACE MOUNTED, STAINLESS STEEL DOUBLE LOCKING, PG21, HIGH CONSTRUCTION, POWDER COATED, GREY H24B下壳, 表面安装, 不锈钢双扣, PG21, 高结构, 灰色粉末喷涂 | PG21 | - | TYPE I 类型I |
| T1470241129-000 | H24B-SGRHS-PG29 | H24B HOUSING, SURFACE MOUNTED, STAINLESS STEEL DOUBLE LOCKING, PG29, HIGH CONSTRUCTION, POWDER COATED, GREY H24B下壳, 表面安装, 不锈钢双扣, PG29, 高结构, 灰色粉末喷涂 | PG29 | - | |
| T1470241132-000 | H24B-SGRHS-M32 | H24B HOUSING, SURFACE MOUNTED, STAINLESS STEEL DOUBLE LOCKING, M32, HIGH CONSTRUCTION, POWDER COATED, GREY H24B下壳, 表面安装, 不锈钢双扣, M32, 高结构, 灰色粉末喷涂 | M32 | - | |
| T1470241221-000 | H24B-SGRHS-2PG21 | H24B HOUSING, SURFACE MOUNTED, STAINLESS STEEL DOUBLE LOCKING, 2PG21, HIGH CONSTRUCTION, POWDER COATED, GREY H24B下壳, 表面安装, 不锈钢双扣, 2PG21, 高结构, 灰色粉末喷涂 | PG21 | PG21 | |
| T1470241229-000 | H24B-SGRHS-2PG29 | H24B HOUSING, SURFACE MOUNTED, STAINLESS STEEL DOUBLE LOCKING, 2PG29, HIGH CONSTRUCTION, POWDER COATED, GREY H24B下壳, 表面安装, 不锈钢双扣, 2PG29, 高结构, 灰色粉末喷涂 | PG29 | PG29 | |
| T1470241232-000 | H24B-SGRHS-2M32 | H24B HOUSING, SURFACE MOUNTED, STAINLESS STEEL DOUBLE LOCKING, 2M32, HIGH CONSTRUCTION, POWDER COATED, GREY H24B下壳, 表面安装, 不锈钢双扣, 2M32, 高结构, 灰色粉末喷涂 | M32 | M32 | |
| PART NUMBER 料 号 | PART DESCRIPTION 描 述 | | PG/M THREAD-1 螺纹孔-1 | PG/M THREAD-2 螺纹孔-2 | TYPE 类 型 |

| | | | | | |
|---|--|--|--|---|--|
| THIS DRAWING IS A CONTROLLED DOCUMENT. | | DWN 17JUN2015 DAVID LI CHK 17JUN2015 CHRIS WANG APVD 17JUN2015 XU XIANG PRODUCT SPEC 108-137013 APPLICATION SPEC 114-137013 | |  TE Connectivity | |
| DIMENSIONS: mm | | TOLERANCES UNLESS OTHERWISE SPECIFIED: | | NAME H24B-SGRHS-PG/M | |
|  | | 0 PLC ±- 1 PLC ±- 2 PLC ±- 3 PLC ±- 4 PLC ±- ANGLES ±- FINISH | | SIZE A2 | |
| MATERIAL TBD - | | - - | | CAGE CODE - | |
| | | WEIGHT - | | DRAWING NO C-T147024XXXX000 | |
| | | CUSTOMER DRAWING | | RESTRICTED TO | |
| | | | | SCALE 4:5 | |
| | | | | SHEET 1 OF 2 | |
| | | | | REV C | |

| REVISIONS | | | | | |
|-----------|-----|-------------|------|-----|------|
| P | LTR | DESCRIPTION | DATE | DWN | APVD |
| | - | SEE SHEET 1 | - | - | - |
| | | | | | |
| | | | | | |
| | | | | | |

NOTES:
SEE SHEET 1

1471-9 (3/13)

Mouser Electronics

Authorized Distributor

Click to View Pricing, Inventory, Delivery & Lifecycle Information:

[TE Connectivity:](#)

[T1470242132-000](#)