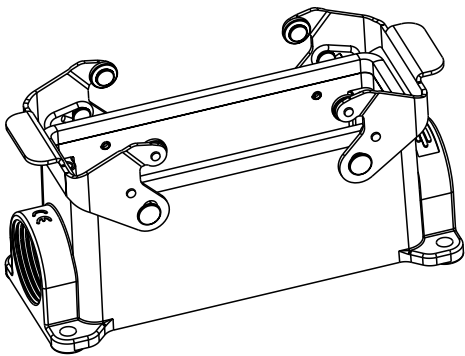
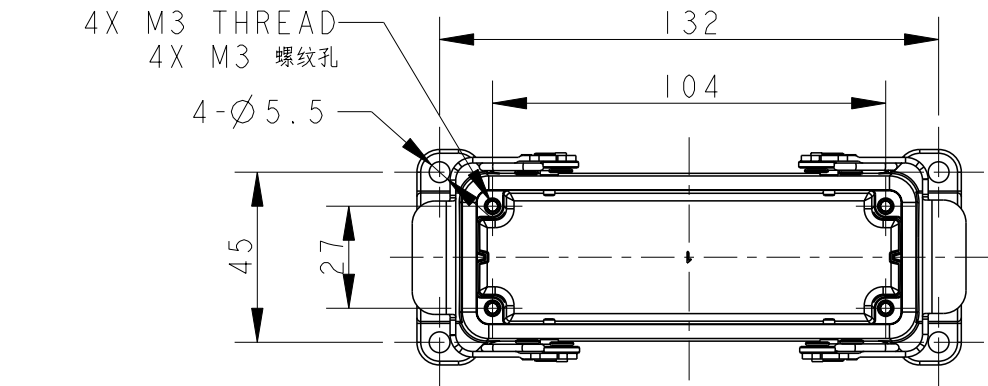
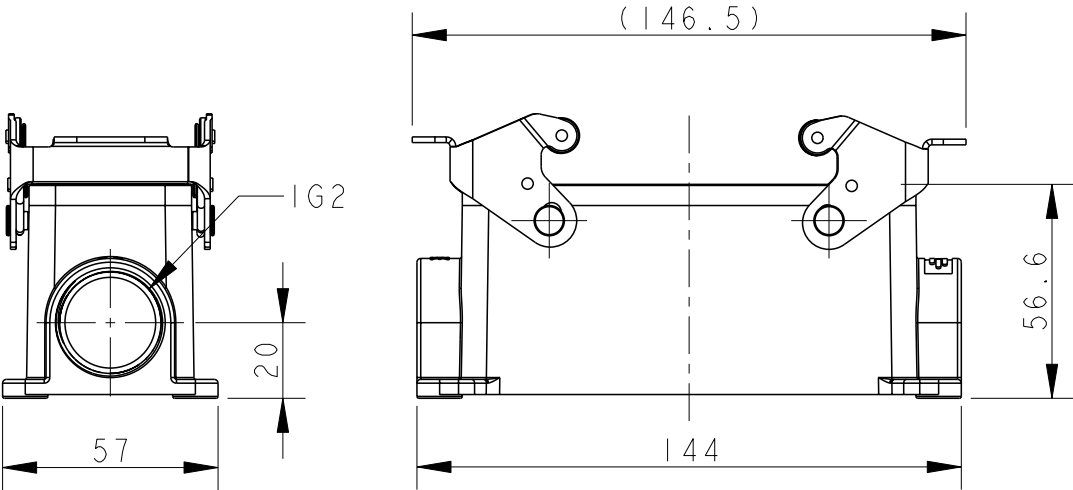
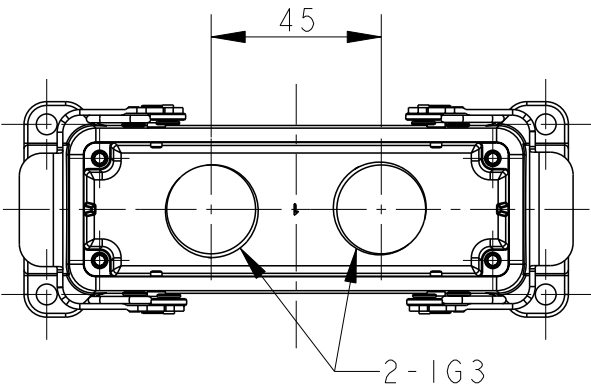


printed on 20 Jul 2021 16:15 (China Standard Time) from TE343646

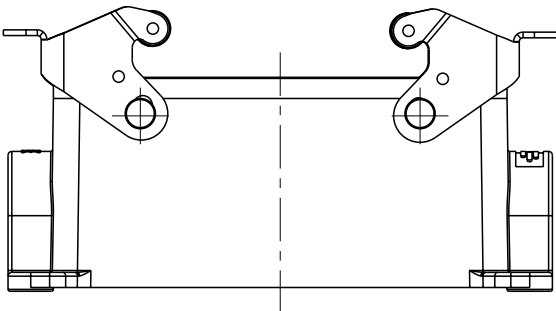
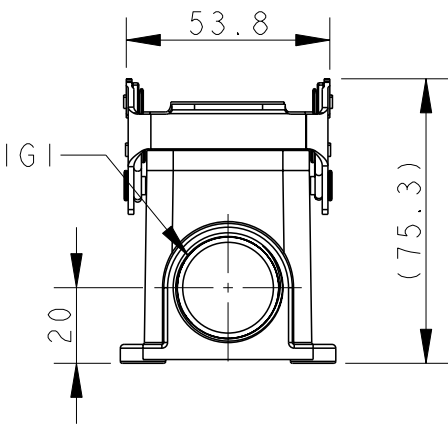
REVISIONS					
P	LTR	DESCRIPTION	DATE	DWN	APVD
	A	INITIAL RELEASE	16JUN2015	DL	CW
	B	ECR-20-014876	16JUL2021	WQR	CW



SCALE 2:5



TYPE 1: BODY + STAINLESS STEEL LOCKING
SIDE ENTRY




TYPE 2: BODY + STAINLESS STEEL LOCKING
BOTTOM ENTRY
OTHER SPEC REFER TO TYPE 1

TI440241121-000	TYPE 1	H24B-SGRS-PG21	PG21	-	-
TI440241125-000		H24B-SGRS-M25	M25	-	-
TI440241221-000		H24B-SGRS-2PG21	PG21	PG21	-
TI440241225-000		H24B-SGRS-2M25	M25	M25	-
TI440245225-000	TYPE 2	H24B-SGRS-T2M25	-	-	M25
ASSEMBLY PART NUMBER	TYPE	ASSEMBLY PART DESCRIPTION	IG1	IG2	IG3

NOTES:
1. TECHNICAL CHARACTERISTICS:
BODY MATERIAL: DIE CAST ALUMINIUM ALLOY
SURFACE TREATMENT: POWDER-COATED, GRAY
DEGREE OF PROTECTION: IP65 (MATED)

注释:
1. 技术参数:
主体材料: 铝合金
表面处理: 粉末喷涂, 灰色
防护等级: IP65(配合)

THIS DRAWING IS A CONTROLLED DOCUMENT.		DWN	DAVID LI	16JUN2015	 TE Connectivity	
		CHK	CHRIS WANG	16JUN2015		
		APVD	XU XIANG	16JUN2015		
		PRODUCT SPEC	108-137013			
		APPLICATION SPEC	114-137013		NAME H24B-SGR/SGRS-PG/M	
		WEIGHT	-			
CUSTOMER DRAWING		SCALE	1:2	SHEET	1 OF 2	REV B

DIMENSIONS:		TOLERANCES UNLESS OTHERWISE SPECIFIED:	
mm			
	0 PLC	±	-
	1 PLC	±	-
	2 PLC	±	-
	3 PLC	±	-
	4 PLC	±	-
ANGLES		±	-
FINISH		-	-
MATERIAL		-	-

THIS DRAWING IS UNPUBLISHED.

RELEASED FOR PUBLICATION

20

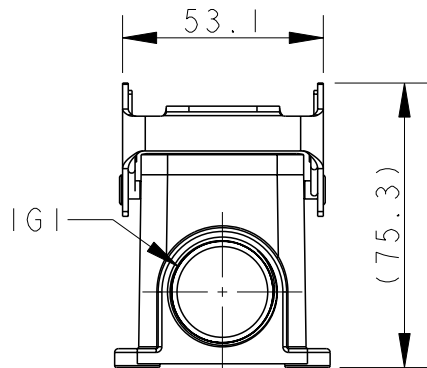
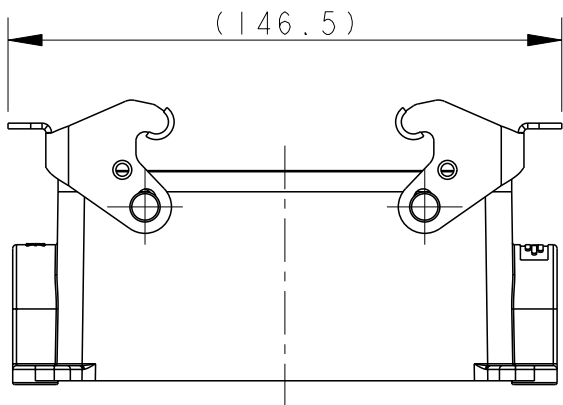
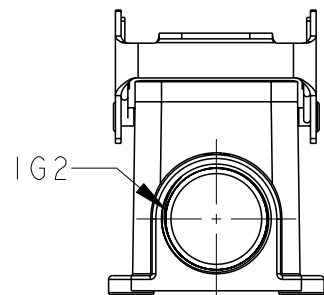
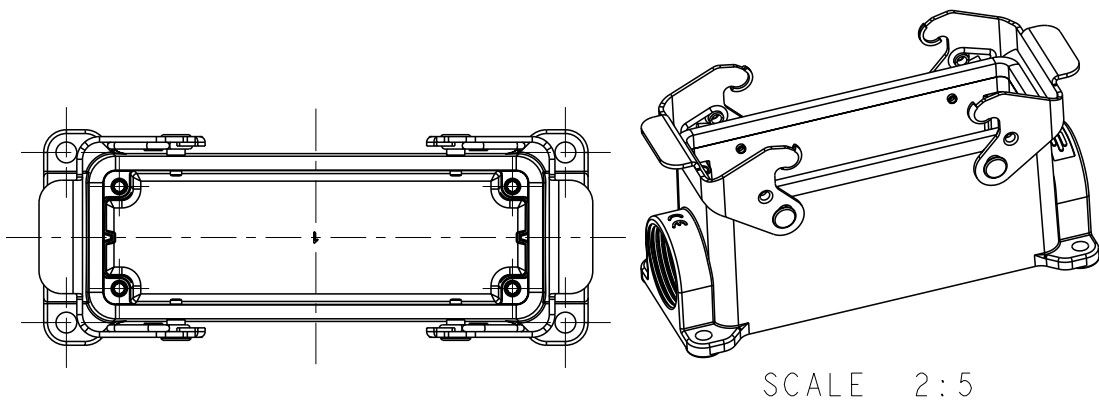
© COPYRIGHT 20

BY -

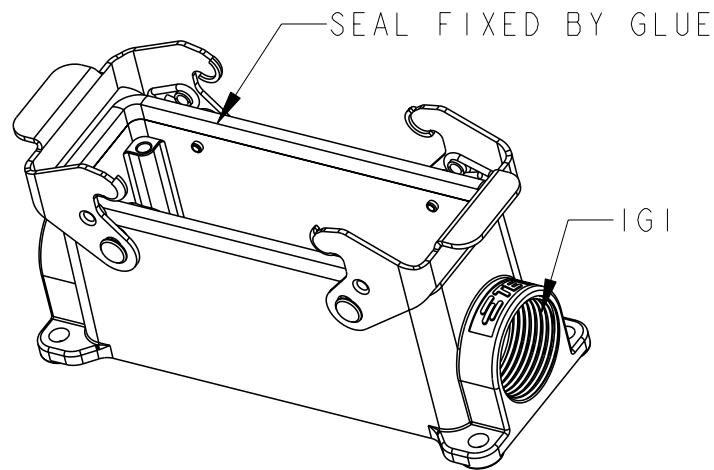
ALL RIGHTS RESERVED.

REVISIONS

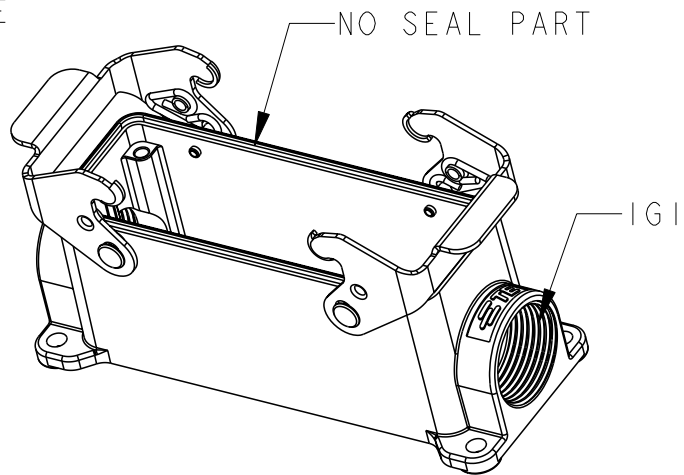
P	LTR	DESCRIPTION	DATE	DWN	APVD
	-	SEE SHEET 1	-	-	-



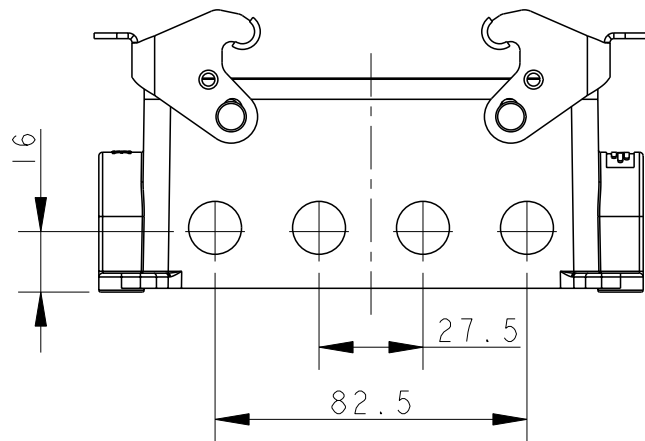
TYPE 3: BODY + STEEL LOCKING
SIDE ENTRY
OTHER SPEC REFER TO TYPE 1



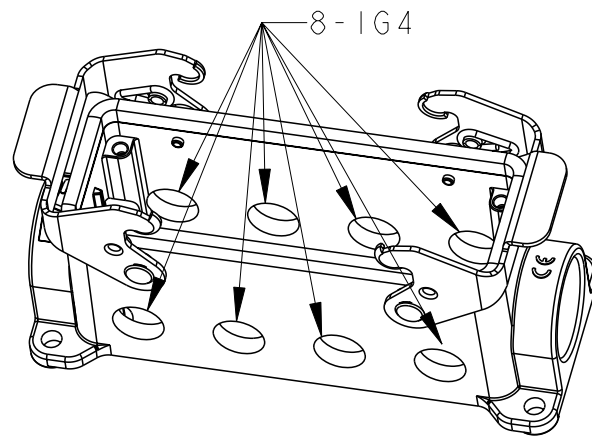
TYPE 4: BODY + STEEL LOCKING
SIDE ENTRY
OTHER SPEC REFER TO TYPE 3



TYPE 5: BODY + STEEL LOCKING
SIDE ENTRY
OTHER SPEC REFER TO TYPE 3



TYPE 6: BODY + STEEL LOCKING
FRONT & BACK ENTRY
OTHER SPEC REFER TO TYPE 3

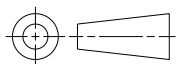


TI440242121-000	TYPE 3	H24B-SGR-PG21	PG21	-	-	
TI440242125-000		H24B-SGR-M25	M25	-	-	
TI440242221-000		H24B-SGR-2PG21	PG21	PG21	-	
TI440242225-000		H24B-SGR-2M25	M25	M25	-	
TI440242521-000		H24B-SGR-M25/PG21	M25	PG21	-	
TI440242125-100	TYPE 4	H24B-SGR-M25	M25	-	-	SEAL FIXED BY GLUE
TI440242125-200	TYPE 5	H24B-SGR-M25	M25	-	-	NO SEAL PART
TI440242809-000	TYPE 6	H24B-SGR-8PG9	-	-	PG9	
ASSEMBLY PART NUMBER	TYPE	ASSEMBLY PART DESCRIPTION	IG1	IG2	IG4	REMARK

TABLE: TYPE DESCRIPTION

THIS DRAWING IS A CONTROLLED DOCUMENT.

DIMENSIONS:
mm



MATERIAL

TOLERANCES UNLESS
OTHERWISE SPECIFIED:

0 PLC ±
1 PLC ±
2 PLC ±
3 PLC ±
4 PLC ±
ANGLES ±
FINISH

DWN 16JUN2015

DAVID LI

CHK 16JUN2015

CHRIS WANG

APVD 16JUN2015

XU XIANG

PRODUCT SPEC

108-137013

APPLICATION SPEC

114-137013

WEIGHT

-

CUSTOMER DRAWING



TE Connectivity

NAME

H24B-SGR/SGRS-PG/M

SIZE

A3

CAGE CODE

-

DRAWING NO

©-TI44024XXXXX00

RESTRICTED TO

SCALE

1:2

SHEET

2 OF 2

REV

B

Mouser Electronics

Authorized Distributor

Click to View Pricing, Inventory, Delivery & Lifecycle Information:

[TE Connectivity:](#)

[T1440241121-000](#)