

THIS DRAWING IS UNPUBLISHED.

RELEASED FOR PUBLICATION

20

© COPYRIGHT 20

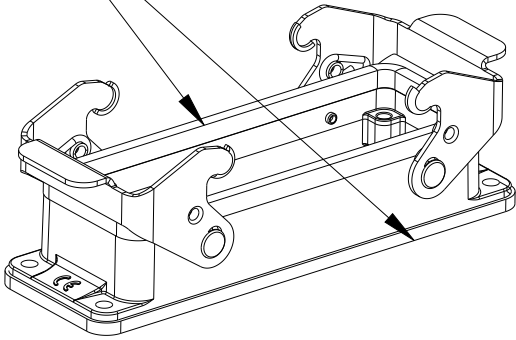
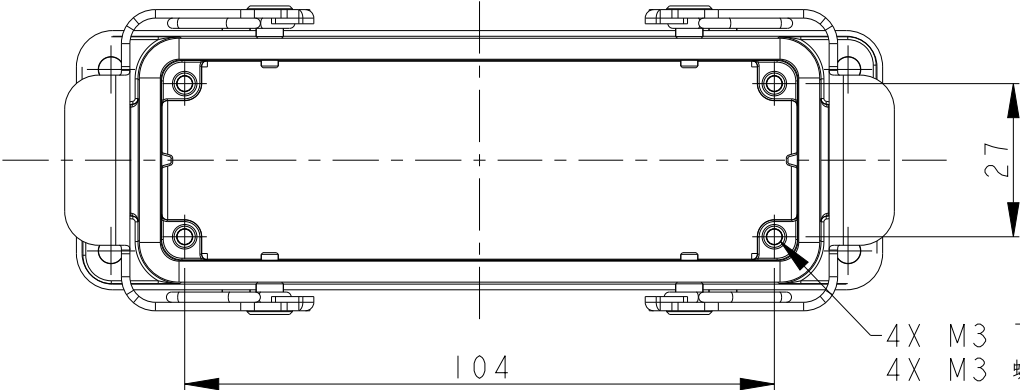
BY -

ALL RIGHTS RESERVED.

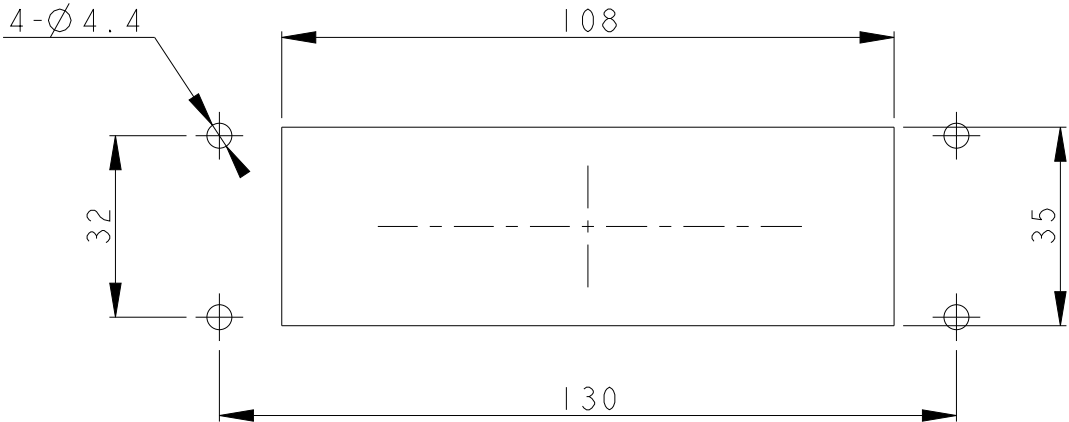
REVISIONS

P	LTR	DESCRIPTION	DATE	DWN	APVD
	A	INITIAL RELEASE	12JUN2015	DL	CW
	B	ECR-20-014876	16JUL2021	WQR	CW

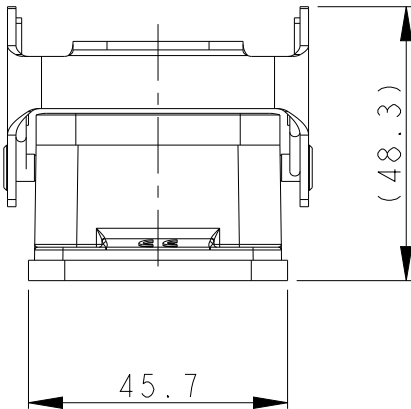
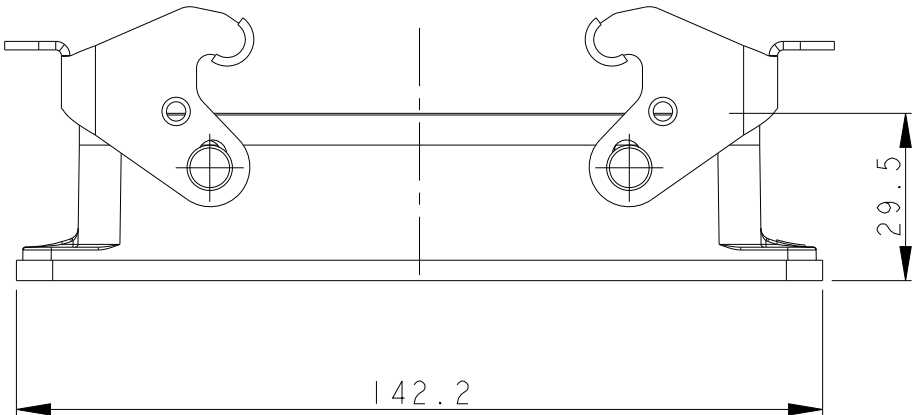
FOR FG "TI410242000-100"
SEAL FIXED BY GLUE



SCALE 1:2

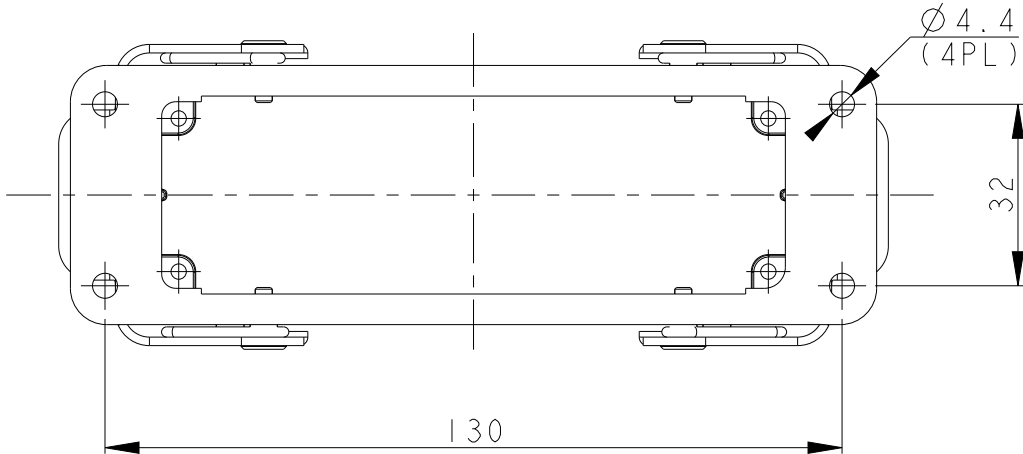


开孔安装示意图
PANNEL CUT OUT



NOTES:
1. TECHNICAL CHARACTERISTICS:
BODY MATERIAL: DIE CAST ALUMINIUM ALLOY
SURFACE TREATMENT: POWDER-COATED, GRAY
DEGREE OF PROTECTION: IP65 (MATED)

注释:
1. 技术参数:
主体材料: 铝合金
表面处理: 粉末喷涂, 灰色
防护等级: IP65(配合)



THIS DRAWING IS A CONTROLLED DOCUMENT.		DWN DAVID LI 12JUN2015	<div>TE Connectivity</div>			
		CHK CHRIS WANG 12JUN2015				
		APVD XU XIANG 12JUN2015				
		PRODUCT SPEC 108-137013				
DIMENSIONS: mm		TOLERANCES UNLESS OTHERWISE SPECIFIED:	NAME H24B-AG			
		0 PLC ±-	SIZE A3		CAGE CODE -	
		1 PLC ±-				
		2 PLC ±-				
		3 PLC ±-				
		4 PLC ±-				
MATERIAL -		ANGLES ±-	APPLICATION SPEC 114-137013		DRAWING NO	
		FINISH -	WEIGHT -		RESTRICTED TO -	
			CUSTOMER DRAWING		SCALE 3:4	SHEET 1 OF 1
					REV B	

Mouser Electronics

Authorized Distributor

Click to View Pricing, Inventory, Delivery & Lifecycle Information:

[TE Connectivity:](#)

[T1410242000-100](#)