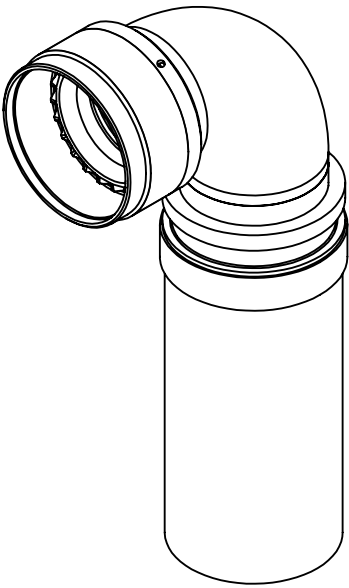


REVISIONS



70A3-14-08-1-C-SE

SERIES
CONNECTOR INTERFACE
ANGLE (3-90°)
SHELL SIZE (TABLE 1)
ENTRY SIZE (TABLE 2)
MATERIAL
FINISH
SWEPT ELBOW STYLE

NOTES:

- 1. THIS PRODUCT IS DESIGNED TO TERMINATE A BRAIDED CABLE SHIELD WITH A HEAT SHRINKABLE LIPPED BOOT TO A CONNECTOR.
- 2. BACKSHELL TO BE PERMANENTLY MARKED/ BAGGED AND LABELLED WITH PART NUMBER AND BATCH NUMBER. (e.g. 70A3-14-08-1-C-SE P123456)
- 3. AVAILABLE ENTRY SIZES ARE SHOWN IN TABLE 1.
FOR ALTERNATIVE ENTRY SIZES, PLEASE CONTACT DESIGN AUTHORITY.
- 4. BACKSHELL MATES TO MIL-DTL-26482 SERIES II / MIL-DTL-83723 SERIES I & III

RELEASED FOR PUBLICATION

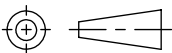
ALL RIGHTS RESERVED.

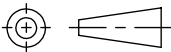
THIS DRAWING IS UNPUBLISHED.

BY

20

©

DIMENSIONS: MILLIMETERS	DWN: C.WALLACE	23/06/2021	MATERIAL: SEE SS0076		FINISH: SEE SS0076	
	CHK: R.STYLES	24/06/2021	<div>TE</div> TE Connectivity			
TOLERANCES UNLESS OTHERWISE SPECIFIED: GENERAL TOL LINEAR $\pm 0,25\text{MM}$ ANGULAR $\pm 1^\circ$	APVD: M.PAUL	23/06/2021				
	PRODUCT SPEC: -	NAME: BRAID TAIL BACKSHELL, SWEPT ELBOW 90DEG				
	APPLICATION SPEC: -					
		WEIGHT:	SIZE A4	CAGE CODE U5792	DRAWING NO C-P46923	RESTRICTED TO
CUSTOMER DRAWING			SCALE 1:1	SHEET 1 OF 2	REV AA	



REVISIONS

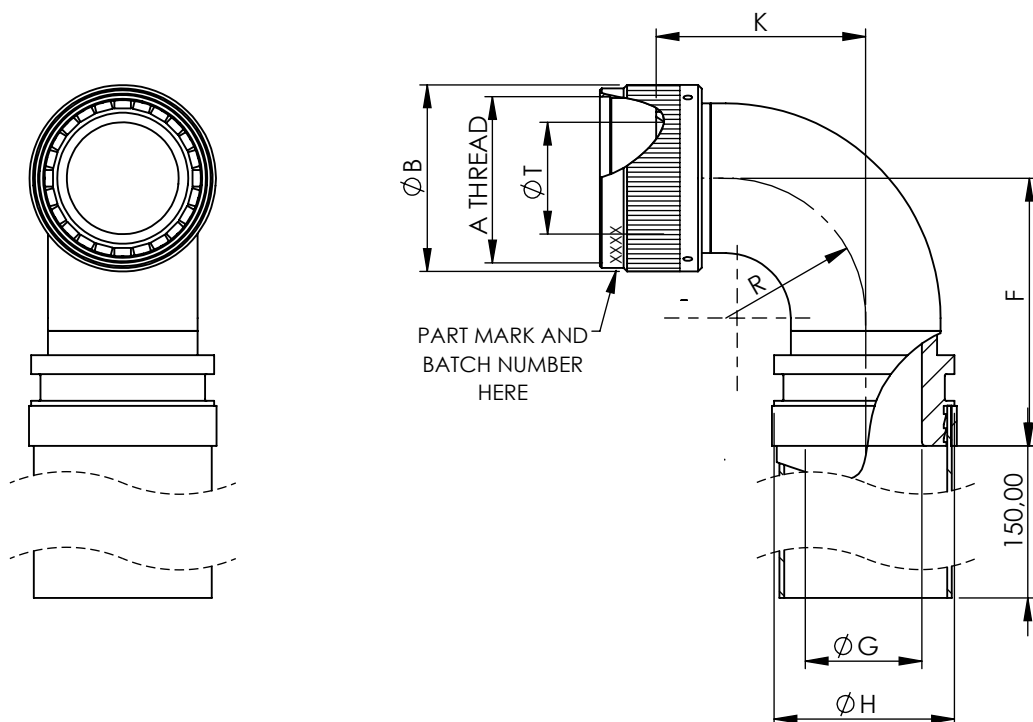


TABLE 1

SHELL SIZE	A THREAD	ØB MAX	K MAX	F MAX	R REF.	ØT MIN	ENTRY SIZES
08	1/2 - 20UNF	15,6	19,2	26,9	9,0	6,7	04
10	5/8 - 24UNEF	18,6	22,4	30,1	12,2	10,2	04, 05
12	3/4 - 20UNEF	21,7	25,6	33,3	15,4	13,5	06, 07
14	7/8 - 20UNEF	24,9	28,7	36,4	18,5	16,2	07, 08
16	1 - 20UNEF	28,2	31,9	39,6	21,7	19,4	08, 10
18	1 1/16 - 18UNEF	30,9	35,1	42,8	24,9	21,8	10, 12
20	1 3/16 - 18UNEF	34,1	38,3	46,0	28,1	25,1	12, 14
22	1 5/16 - 18UNEF	37,3	41,4	49,1	31,2	28,2	14, 16
24	1 7/16 - 18UNEF	40,4	44,6	52,3	34,4	31,4	16, 18

TABLE 2


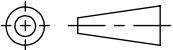
ENTRY SIZE	ØG MIN	ØH MAX
04	6,35	13,60
05	7,92	13,60
06	9,52	18,40
07	11,12	18,40
08	12,70	18,40
10	15,87	24,70
12	19,05	24,70
14	22,23	31,10
16	25,40	31,10
18	28,60	33,70

THIS DRAWING IS UNPUBLISHED.

ALL RIGHTS RESERVED.

COPYRIGHT 20 BY



DIMENSIONS: MILLIMETERS	DWN: C.WALLACE 23/06/2021	MATERIAL: SEE SS0076	FINISH: SEE SS0076		
TOLERANCES UNLESS OTHERWISE SPECIFIED: GENERAL TOL LINEAR ±0.25MM ANGULAR ±1°	CHK: R.STYLES 24/06/2021	 TE Connectivity			
	APVD: M.PAUL 23/06/2021	PART NUMBER: 70A3-SE SERIES			
	PRODUCT SPEC: -	NAME: BRAID TAIL BACKSHELL, SWEEP ELBOW 90DEG			
	APPLICATION SPEC: -	SIZE CAGE CODE DRAWING NO			RESTRICTED TO
	WEIGHT:	A4	U5792	C-P46923	
	CUSTOMER DRAWING		SCALE 1:1	SHEET 2 OF 2	REV AA

Mouser Electronics

Authorized Distributor

Click to View Pricing, Inventory, Delivery & Lifecycle Information:

[TE Connectivity:](#)

[BAE0220-00](#) [70A3-08-04-1-C-SE](#)