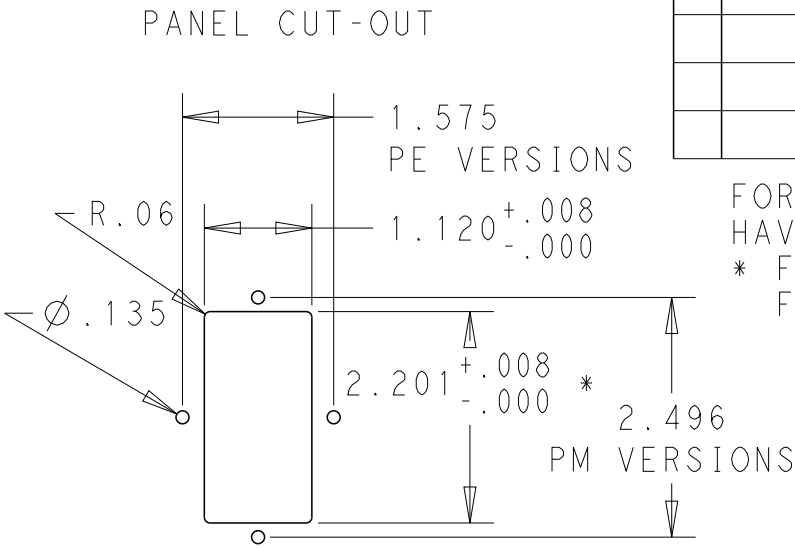


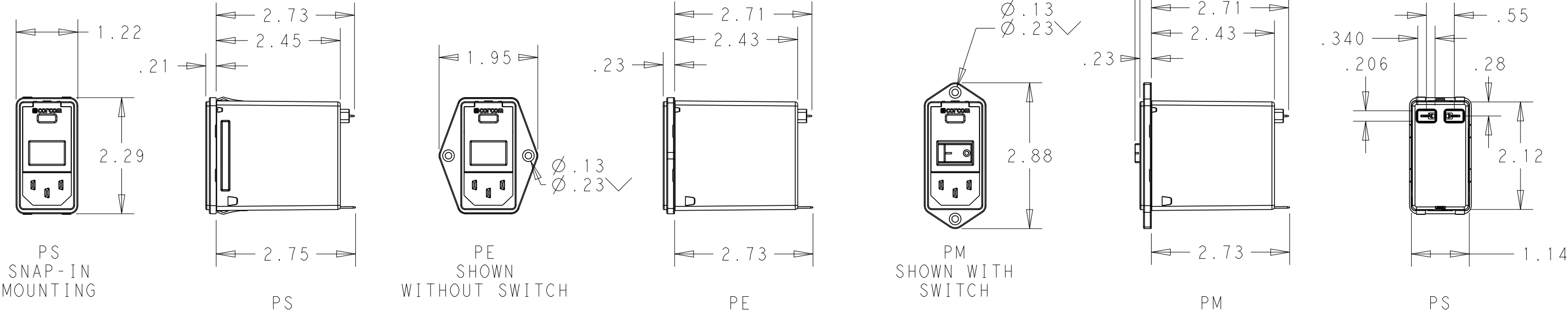
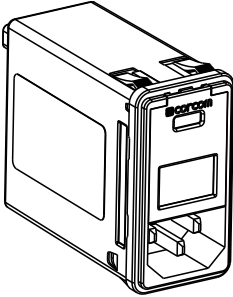
LOC	DIST	REVISIONS					
X53	-	P	LTR	DESCRIPTION	DATE	DWN	APVD
			A	ECO-10-017557	10JAN2012	EC	EC

MINIMUM INSERTION LOSS, 50Ω LINE AND LOAD IMPEDANCES													
LINE TO GROUND (COMMON MODE)							LINE TO LINE (DIFFERENTIAL MODE)						
CURRENT RATING	FREQUENCY, MHz						CURRENT RATING	FREQUENCY, MHz					
	.15	.5	1	3	10	30		.15	.5	1	3	10	30
3 AMP	50	60	60	49	40	30	3 AMP	25	60	60	53	45	40
6 AMP	34	58	58	47	37	30	6 AMP	9	50	62	54	46	40
10 AMP	6	35	45	45	38	30	10 AMP	10	20	59	54	48	40

SCHEMATIC



FOR PS VERSIONS THE SHORT EDGES MUST HAVE R.02 ON INSERTION SIDE.
* FOR PANEL THICKNESS 0.031-0.079 USE 2.201
FOR PANEL THICKNESS 0.083-0.114 USE 2.213.



PART NUMBER SYSTEM

P S O S O S M 6 E

MOUNTING STYLE
S = SEE ABOVE
E = SEE ABOVE
M = SEE ABOVE


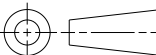
CURRENT
3 = 3 AMP
6 = 6 AMP
X = 10 AMP

SWITCH OPTIONS
0 = NONE
S = DOUBLE POLE,
SINGLE THROW

FUSE LOCATIONS
D = DUAL FUSING
S = SINGLE FUSING
INCLUDES CONVERSION CLIP

PSOSOSM6E EXAMPLE:
SNAP-IN MOUNTING
WITH SWITCH
SINGLE FUSING
6 AMP
0'S ARE ZEROS.

HIPOT RATING (ONE MINUTE)	MAX LEAKAGE CURRENT .25mA @ 120V 60Hz
LINE TO GROUND: 1500 VAC	PER LINE TO GROUND: .50mA @ 250V 60Hz
LINE TO LINE: 1450 VDC	HUMIDITY: 21 DAYS, 40°C @ 95%RH
OPERATING FREQUENCY: 50/60 Hz	CURRENT OVERLOAD: 6X RATED FOR 8 SEC
RATED VOLTAGE: 120/250 VAC	SWITCH: 10K CYCLES @ 51 AMP INRUSH
FUSING: ACCEPTS 3AG ∅1/4" X 1-1/4"	TERMINALS: 0.187" X .032 FASTON TABS
OR METRIC ∅5 mm X 20 mm	SAFETY AGENCIES: UL RECOGNIZED, CSA CERTIFIED, VDE APPROVED.
OPERATING AMBIENT TEMP: -10°C TO 40°C	
STORAGE TEMPERATURE: -40°C TO 85°C	

THIS DRAWING IS A CONTROLLED DOCUMENT.		DWN EC	20DEC2011	<div>TE Connectivity</div>									
		CHK -	20DEC2011										
DIMENSIONS: INCHES		TOLERANCES UNLESS OTHERWISE SPECIFIED: 0 PLC ±.2 1 PLC ±.1 2 PLC ±.02 3 PLC ±.005 4 PLC ±.0005 ANGLES ±1		NAME MEDIUM P SERIES SWITCHED, FUSED, 2-STAGE FILTERED INLET									
		APVD EC		20DEC2011		SIZE A3		CAGE CODE 00779		DRAWING NO C-MEDIUM-P-SERIES		RESTRICTED TO -	
		PRODUCT SPEC -											
MATERIAL -		FINISH -		APPLICATION SPEC -		WEIGHT -		CUSTOMER DRAWING					
						SCALE 1:2		SHEET 1		OF 1		REV A	

Mouser Electronics

Authorized Distributor

Click to View Pricing, Inventory, Delivery & Lifecycle Information:

[TE Connectivity:](#)

[4-1609154-6](#)