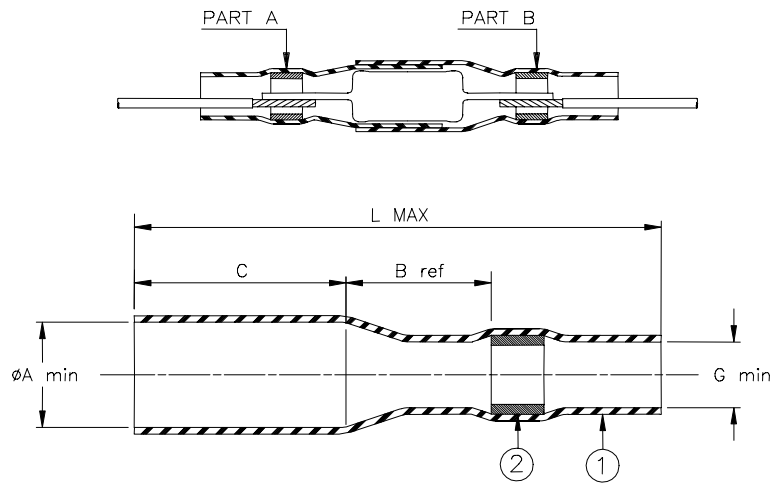


SPECIFICATION CONTROL DRAWING



Product Revision			Product Dimensions				Wire Dimensions			Component Information			
Product Name			øA min	B ref	C max	L max	D min	D max G min	AWG	Lr		Dr	
Kit	Subassemblies									max	min	max	min
CWT-2001	CWT-2001-A	A	2.2 (0.085)	7.7 (0.300)	5.5 (0.215)	22.0 (0.865)	1.1 (0.045)	1.5 (0.060)	22/24	8.0 (0.315)	6.5 (0.255)	2.5 (0.100)	1.8 (0.070)
	CWT-2001-B	A	2.9 (0.114)	7.7 (0.300)	5.5 (0.215)	22.0 (0.865)	1.1 (0.045)	1.5 (0.060)					
CWT-2002	CWT-2002-A	A	3.2 (0.125)	7.7 (0.300)	7.5 (0.295)	27.0 (1.060)	1.1 (0.045)	2.3 (0.090)	20/24	11.0 (0.435)	9.0 (0.355)	3.5 (0.135)	2.5 (0.100)
	CWT-2002-B	A	3.7 (0.145)	7.7 (0.300)	7.5 (0.295)	27.0 (1.060)	1.1 (0.045)	2.3 (0.090)					
CWT-2003	CWT-2003-A	A	3.7 (0.145)	7.7 (0.300)	9.5 (0.375)	27.0 (1.060)	1.8 (0.070)	2.8 (0.110)	18/20	15.0 (0.590)	10.5 (0.415)	3.9 (0.150)	3.0 (0.120)
	CWT-2003-B	A	4.4 (0.175)	7.7 (0.300)	9.5 (0.375)	27.0 (1.060)	1.8 (0.070)	2.8 (0.110)					

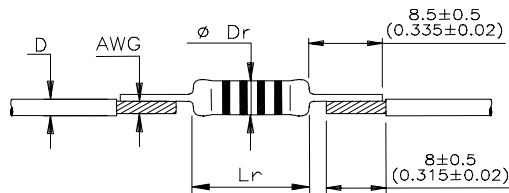
MATERIALS

- INSULATION SLEEVE: Heat-shrinkable, transparent clear, radiation cross-linked polyolefin.
- SOLDER PREFORM WITH FLUX:
 - SOLDER: TYPE Cd18 per ANSI/J-STD-006.
 - FLUX: TYPE ROM1 per ANSI/J-STD-004.

APPLICATION

- These parts are designed to provide an inline termination of a component, rated for +105°C minimum, and meeting the dimensional criteria listed.
- Temperature range: -55°C to +125°C.
- For installation procedure and application equipment, consult Tyco Electronics/Raychem RPIP 824-00.

For best results, prepare the wire and the component as shown:



<div>tyco</div> <div>Electronics</div>		<div>Raychem Products</div> <div>305 Constitution Drive, Menlo Park, CA. 94025, USA</div>		<div>TITLE:</div> <div>SOLDERSLEEVE DEVICE IN-LINE COMPONENT TERMINATION</div>				
<div>Unless otherwise specified dimensions are in millimeters. [Inches dimensions are shown in brackets]</div>				<div>DOCUMENT NO.:</div> <div>CWT-200X</div>				
<div>TOLERANCES:</div> <div>0.00 N/A 0.0 N/A 0 N/A</div>	<div>ANGLES: N/A</div> <div>ROUGHNESS IN MICRON</div>	<div>Tyco Electronics reserves the right to amend this drawing at any time. Users should evaluate the suitability of the product for their application.</div>		<div>PROD. REV.:</div> <div>SEE TABLE</div>	<div>DOC. ISSUE:</div> <div>4</div>	<div>DATE:</div> <div>8-May-03</div>		
<div>PREPARED BY:</div> <div>mforonda</div>		<div>DCR NUMBER:</div> <div>D030069</div>		<div>REPLACES:</div> <div>D981254</div>		<div>SCALE:</div> <div>None</div>	<div>SIZE:</div> <div>A</div>	<div>SHEET:</div> <div>1 of 1</div>

If this document is printed it becomes uncontrolled. Check for the latest revision.

Mouser Electronics

Authorized Distributor

Click to View Pricing, Inventory, Delivery & Lifecycle Information:

[TE Connectivity:](#)

[CWT-2003](#)