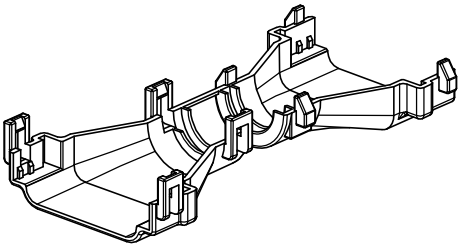


THIS DRAWING IS UNPUBLISHED.
RELEASED FOR PUBLICATION
BY TYCO ELECTRONICS CORPORATION. ALL RIGHTS RESERVED.


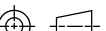
LOC	DIST	REVISIONS				
		P	LTR	DESCRIPTION	DATE	APVD
DS	—	B		REVISED(ECR-07-027758)	05/DEC/'07	JK
		C		REVISED(ECR-10-020545)	03/DEC/'10	JK



3D-VIEW
SCALE 1/1

- NOTES;
1. WARP IS 0.5 MAX. AND FLASH IS 0.3 MAX.
 2. APPLICABLE CONNECTOR : X-936780-X
 3. APPLICABLE CORRUGATOR DIAMETER : Ø11.0
 4. GENERAL TOLERANCE IS DECIMALS ±0.3, ANGLES ±3°

BLACK	PA66	CAP COVER	0-936783-2
COLOR	MATERIAL	DESCRIPTION	P/N

THIS DRAWING IS A CONTROLLED DOCUMENT FOR TYCO ELECTRONICS CORPORATION IT IS SUBJECT TO CHANGE AND THE CONTROLLING ENGINEERING ORGANIZATION SHOULD BE CONTACTED FOR THE LATEST REVISION.		DWN SJ CHOI	<div> Tyco Electronics</div> <div>Tyco Electronics kyungsan, korea</div>				
		CHK JW JUNG					
		APVD HG CHO					
DIMENSIONS: MM	TOLERANCES UNLESS OTHERWISE SPECIFIED:	NAME					
<div></div> <div>3rd ANGLE PROJECTION</div>	SEE NOTE	PRODUCT SPEC -	COVER FOR MTII/JPT SLD 20P CAP				
		APPLICATION SPEC -	SIZE	CAGE CODE	DRAWING NO	RESTRICTED TO	
		WEIGHT -	A2	00779	C=	936783	-
MATERIAL SEE TABLE	FINISH	CUSTOMER DRAWING			SCALE 2/1	SHEET 1 of 1	REV C

Mouser Electronics

Authorized Distributor

Click to View Pricing, Inventory, Delivery & Lifecycle Information:

[TE Connectivity:](#)

[936783-2](#)