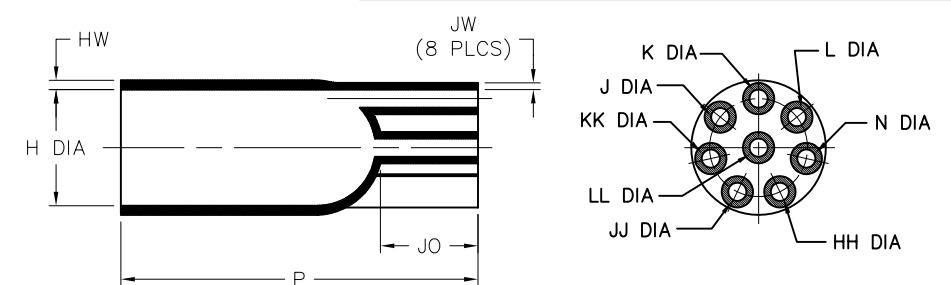
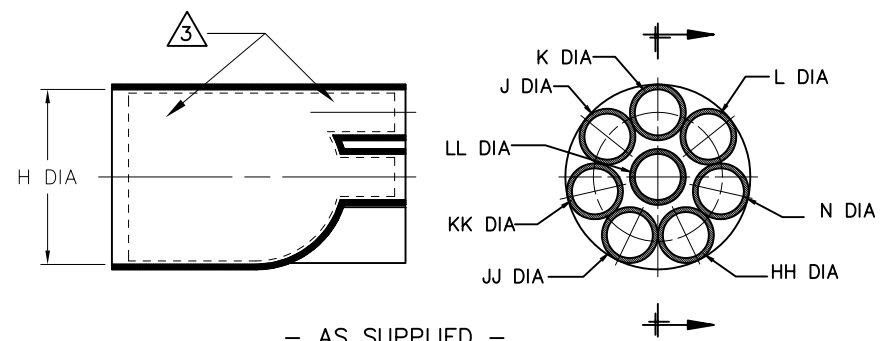


REVISIONS		
LTR	DESCRIPTION	DATE
F	REVISED PER ECO-10-001668	01/26/2010



NOTES

- ALL DIMENSIONS ARE IN $\frac{\text{INCHES}}{[\text{MILLIMETERS}]}$; $\frac{\text{lbs}}{[\text{gms}]}$
- DIMENSIONS APPEARING IN TABLE ARE AS FOLLOWS:
 - a - AS SUPPLIED
 - b - AFTER UNRESTRICTED RECOVERY

3. COATING (ADHESIVE): IS OPTIONAL AS SUPPLIED DIMENSIONS APPEARING IN TABLE ARE FOR UNCOATED PARTS. WHEN COATING IS ADDED, ENTRY DIAMETER WILL BE REDUCED BY .06 [1.5] MAX.

ORDERING INFORMATION

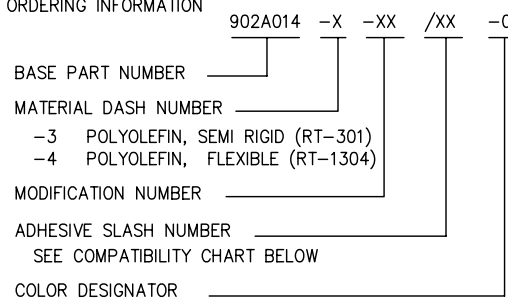


TABLE OF DIMENSIONS

PART NUMBER	H		J,K,L,N,HH,JJ,KK & LL		P	JO	HW	JW	WEIGHT	THIS BOOT SHALL FIT MIL-DTL-26482 SHELL SIZE
	MIN	MAX	MIN	MAX	±10%	±10%	±20%	±20%	REF	
	a	b	a	b	b	b	b	b	b	
902A014	$\frac{1.27}{[32,2]}$	$\frac{1.09}{[27,7]}$	$\frac{.37}{[9,4]}$	$\frac{.18}{[4,6]}$	$\frac{4.00}{[102,8]}$	$\frac{1.40}{[35,6]}$	$\frac{0.30}{[7,62]}$	$\frac{0.10}{[2,54]}$	$\frac{.036}{[16,3]}$	20

If this document is printed it becomes uncontrolled. Check for the latest revision

COMPATIBILITY CHART

MATERIAL DASH NO.	ADHESIVE (COATING) SLASH NUMBER	ADHESIVE (COATING) S NUMBER
-3	/42; /86; /87	S-1017; S-1048; S-1052
-4	/42; /86; /87	S-1017; S-1048; S-1052

UNLESS OTHERWISE SPECIFIED DIMENSIONS ARE INCHES. METRIC DIMENSIONS ARE IN BRACKETS.

DECIMAL TOLERANCES

.XXX ± 0.005 [0.13 mm]

.XX ± 0.01 [0.25 mm]

.X ± 0.1 [0.50 mm]

ANGLE TOLERANCE

.X ± 1 DEG.

TYCO ELECTRONICS RESERVES THE RIGHT TO AMEND THIS DRAWING AT ANY TIME. USERS SHOULD EVALUATE THE SUITABILITY OF THE PRODUCT FOR THEIR APPLICATION.

DRAWN

UNGUYEN

APPROVED

DHURRELL

THIRD ANGLE PROJECTION

Raychem Molded Parts

305 Constitution Dr

Menlo Park, CA 94025

TYCO Electronics

TITLE

BOOT, STRAIGHT, EIGHT ENTRY

SIZE

B

CODE IDENT. NO.

06090

DWG. NO.

902A014

© 2008-2010 Tyco Electronics Corporation. All rights reserved.

DO NOT SCALE THIS DRAWING

SHEET 1 OF 1

D

C

B

A

D

C

B

A

Mouser Electronics

Authorized Distributor

Click to View Pricing, Inventory, Delivery & Lifecycle Information:

[TE Connectivity:](#)

[902A014-3-0](#) [902A014-4-0](#)