

LOC	DIST	REVISIONS					
—	—	P	LTR	DESCRIPTION	DATE	DWN	APVD
			A	REVISED PER ECR-14-007825	30MAY2014	RS	EC
			B	ECO-15-015144: ADD UL.	23OCT2015	EC	EC

SAFETY ORGANIZATIONS

THIS FILTER HAS BEEN FORMALLY RECOGNIZED, CERTIFIED OR APPROVED BY THE LISTED AGENCY. THEREFORE, ALL TEST/REQUIREMENTS SPECIFIED IN THE LATEST REVISION OF THE FOLLOWING AGENCY STANDARDS HAVE BEEN MET: UL

OPERATING SPECIFICATIONS

LINE CURRENT/VOLTAGE: 250 A, 520 VAC
LINE FREQUENCY: 50-60 Hz
NOMINAL LEAKAGE CURRENT: 6 mA
MAXIMUM LEAKAGE CURRENT: 222mA @ 277V, 50HZ
OPERATING AMBIENT TEMPERATURE RANGE
@ RATED CURRENT, I : -10°C TO +50°C

IN AN AMBIENT, T, HIGHER THAN 50°C,
THE MAXIMUM OPERATING
CURRENT, I, IS AS FOLLOWS:

$$I_c I_0 = I_R \sqrt{\frac{100 - T}{50}}$$

RELIABILITY SPECIFICATIONS

STORAGE TEMPERATURE: -40°C TO +85°C
HUMIDITY: 21 DAYS @ 40°C AND 95% RH

TEST SPECIFICATIONS

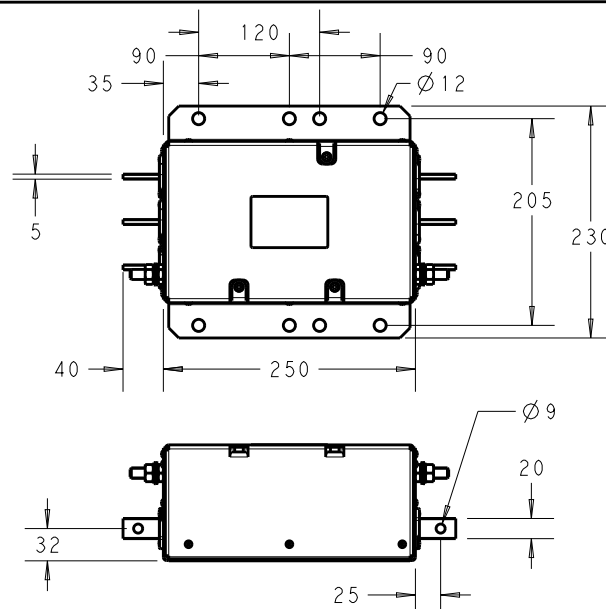
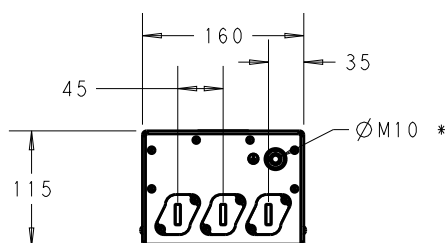
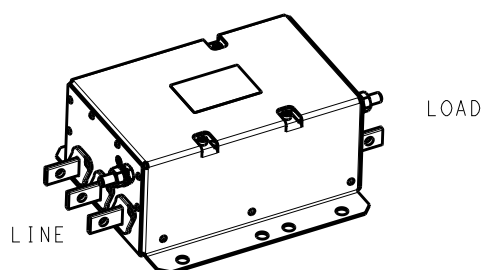
INDUCTANCE, NOMINAL: 64.1 µH
CAPACITANCE @ 1 kHz, 0.25 VAC MAX., 25°C ±1°C:
LINE TO GROUND, NOMINAL: 2.62 µF
LINE TO LINE, NOMINAL: 12.3 µF
DISCHARGE RESISTOR
L/G AND L/L I.R. 666kΩ / 666kΩ
IR (NO DISCHARGE RESISTOR) 20°C, 50% RH AND 100VDC, MIN: 6000 MΩ

RECOMMENDED RECEIVING INSPECTION HIPOT

LINE TO GROUND FOR 1 MINUTE: 2200 VDC
LINE TO LINE FOR 1 MINUTE: 2160 VDC

FILTER APPROVAL:

THE BEST WAY TO SELECT AND QUALIFY
A FILTER IS FOR YOUR ENGINEERING TO
TEST THE UNIT IN YOUR EQUIPMENT.



* DO NOT LOOSEN INNER GROUND NUTS.
TORQUE OUTER GROUND NUTS TO:
12-14 NM [110-120 IN-LB]

TYPICAL INSERTION LOSS
COMMON MODE 50/50 Ω; DIFFERENTIAL MODE 100/100Ω

MHz	0.01	0.05	0.15	0.5	1.0	3.0	5.0	10	30
CM	12	23	66	77	63	79	80	53	29
DM	31	45	64	81	69	57	51	44	31

DIMENSIONS:

mm

DWN

RS

16DEC2013

MATERIAL

FINISH

CHK

EC

16DEC2013

APVD

EC

16DEC2013

PRODUCT SPEC

8-1609148-2

APPLICATION SPEC

-

WEIGHT

6.4 kg

NAME

250APH12L
3-PHASE DELTA FILTER

SIZE

CAGE CODE

DRAWING NO

RESTRICTED TO

A4

00779

C-8-1609148-2

-

Customer Drawing

SCALE 2:15

SHEET

1

OF 1

REV

B

THIS DRAWING IS UNPUBLISHED.

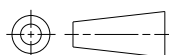
ALL RIGHTS RESERVED.

BY -

COPYRIGHT -



0 PLC ±2.0
1 PLC ±1
2 PLC ±0.5
3 PLC ±0.2
4 PLC ±0.0001
ANGLES ±-



Mouser Electronics

Authorized Distributor

Click to View Pricing, Inventory, Delivery & Lifecycle Information:

[TE Connectivity:](#)

[8-1609148-2](#)