

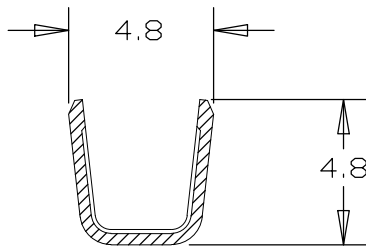
4

3

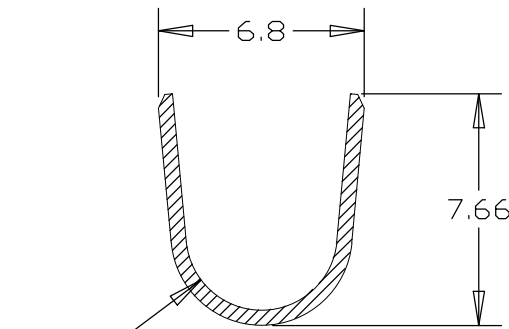
2

1

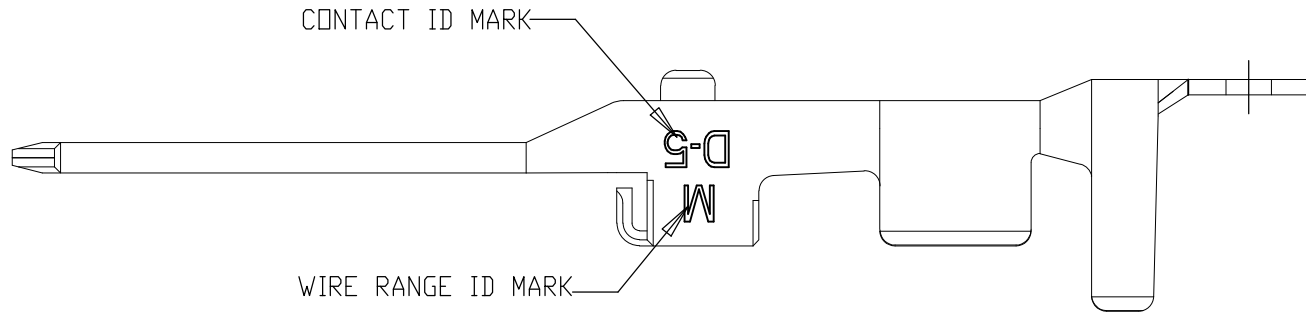
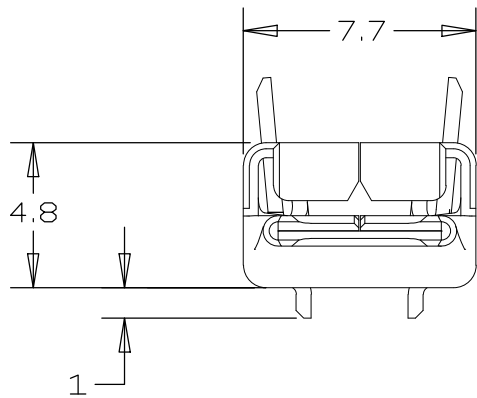
LOC	DIST	REVISIONS					
		P	LTR	DESCRIPTION	DATE	DWN	APVD
ES	00		C	REVISED PER ECR-19-014502	17SEP2019	T.S	E.I



SECTION A-A

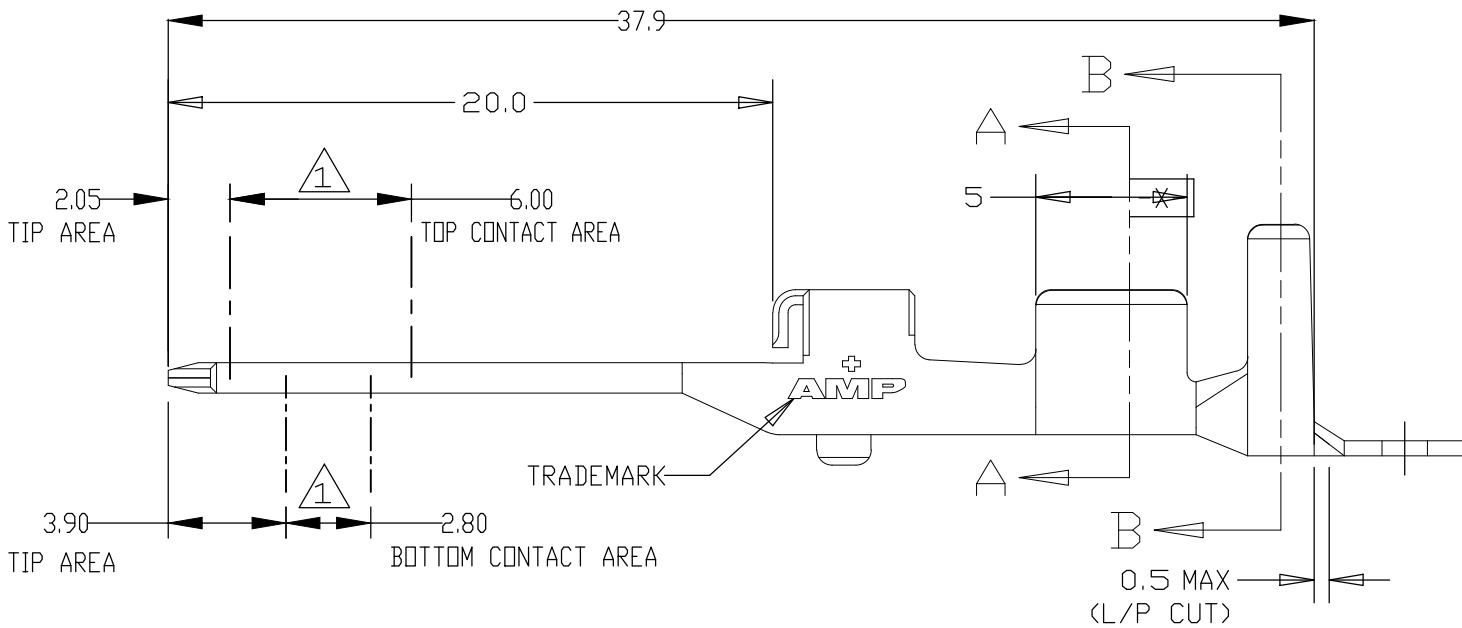
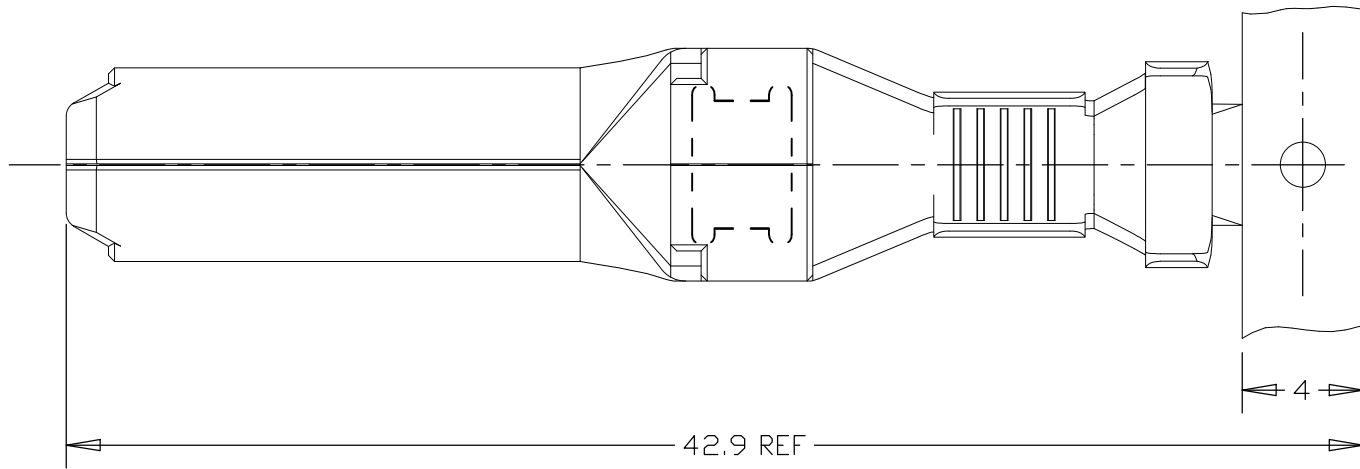


SECTION B-B



CONTACT ID MARK

WIRE RANGE ID MARK



2.05
TIP AREA

6.00
TOP CONTACT AREA

3.90
TIP AREA

2.80
BOTTOM CONTACT AREA

TRADEMARK


0.5 MAX
(L/P CUT)

NOTES:

1 FINISH : 0.2um MIN GOLD (CONTACT AREA) PLATING OVER Ni UNDER PLATING ALL OVER
EXCEPT INSIDE OF CONTACT BOX
GOLD PLATING THK DID NOT CONTROLL AT CONTACT TIP AREA

2. TOLERANCES UNLESS OTHERWISE SPECIFIED

* ≤10 : ±0.3
10< * ≤30 : ±0.35
30< * ≤100: ±0.4
ANGLE: ±3°

THIS DRAWING IS A CONTROLLED DOCUMENT FOR AMP INCORPORATED. IT IS SUBJECT TO CHANGE AND THE CONTROLLING ENGINEERING ORGANIZATION SHOULD BE CONTACTED FOR THE LATEST REVISION.		DWN WY LEE	3JAN'00	 TE Connectivity		
		CHK LP TAN	3JAN'00			
		APVD WL CHOO	31MAY'01	NAME TAB CONTACT "M" SIZE <DYNAMIC D-5000 SERIES>		
		PRODUCT SPEC				
		APPLICATION SPEC	114-5206			
		WEIGHT	2.08g	SIZE A3	CAGE CODE 00779	DRAWING NO C-84695
		CUSTOMER DRAWING		SCALE 4:1	SHEET 1 OF 1	REV C
DIMENSIONS: mm		TOLERANCES UNLESS OTHERWISE SPECIFIED:				
		0 PLC ±0.30 1 PLC ±0.35 2 PLC ±0.40 3 PLC ±0.40 4 PLC ±0.40 ANGLES ±3°				
MATERIAL COPPER ALLOY		FINISH SEE TABLE				

1	84695-1
FINISH	PART NO.

WIRE RANGE 3.08/5.5mm ² AWG #12/#10	INSULATION DIA 4/5.2mmØ
--	----------------------------

Mouser Electronics

Authorized Distributor

Click to View Pricing, Inventory, Delivery & Lifecycle Information:

[TE Connectivity:](#)

[84695-1 \(Loose Piece\)](#)