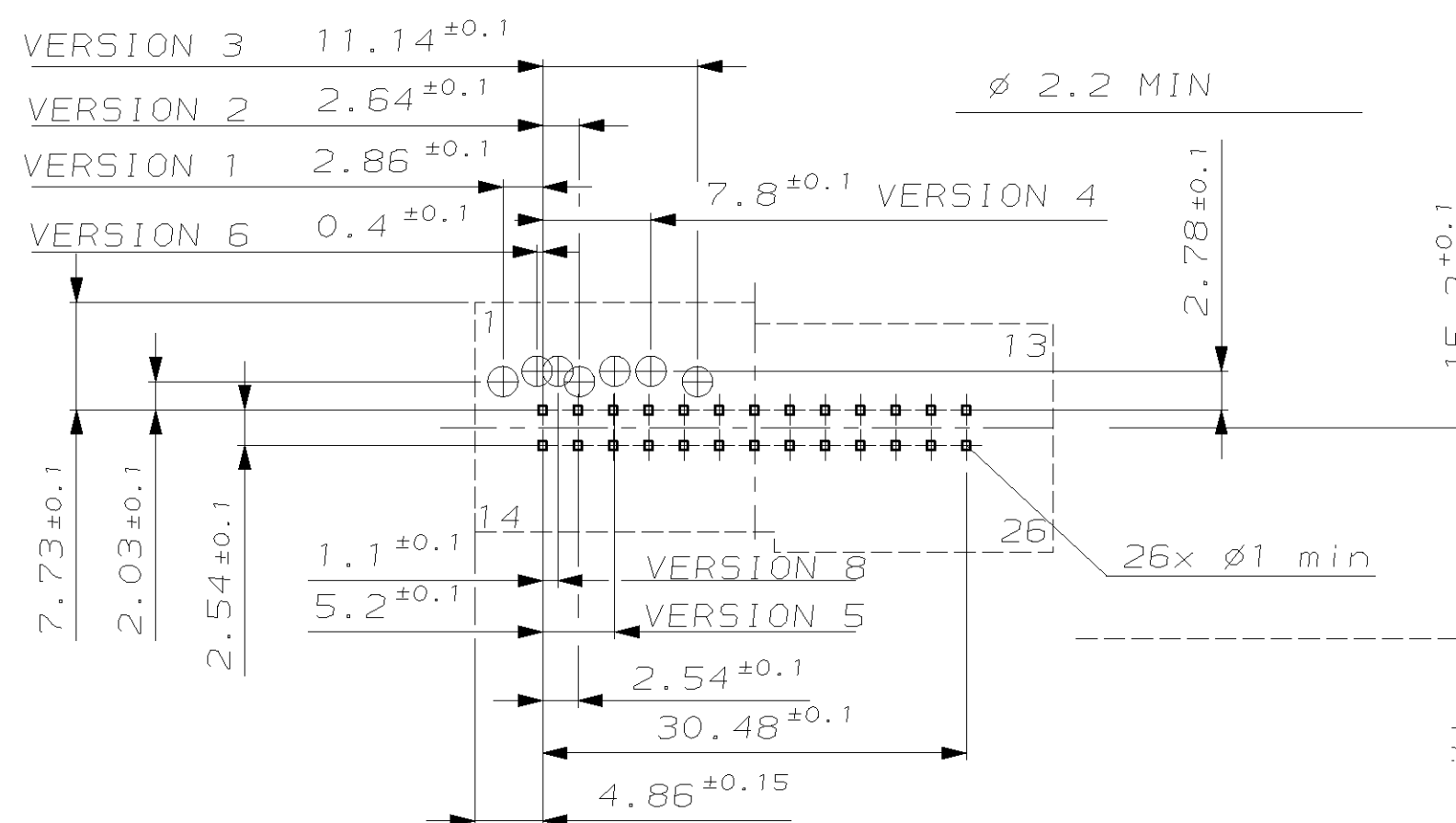
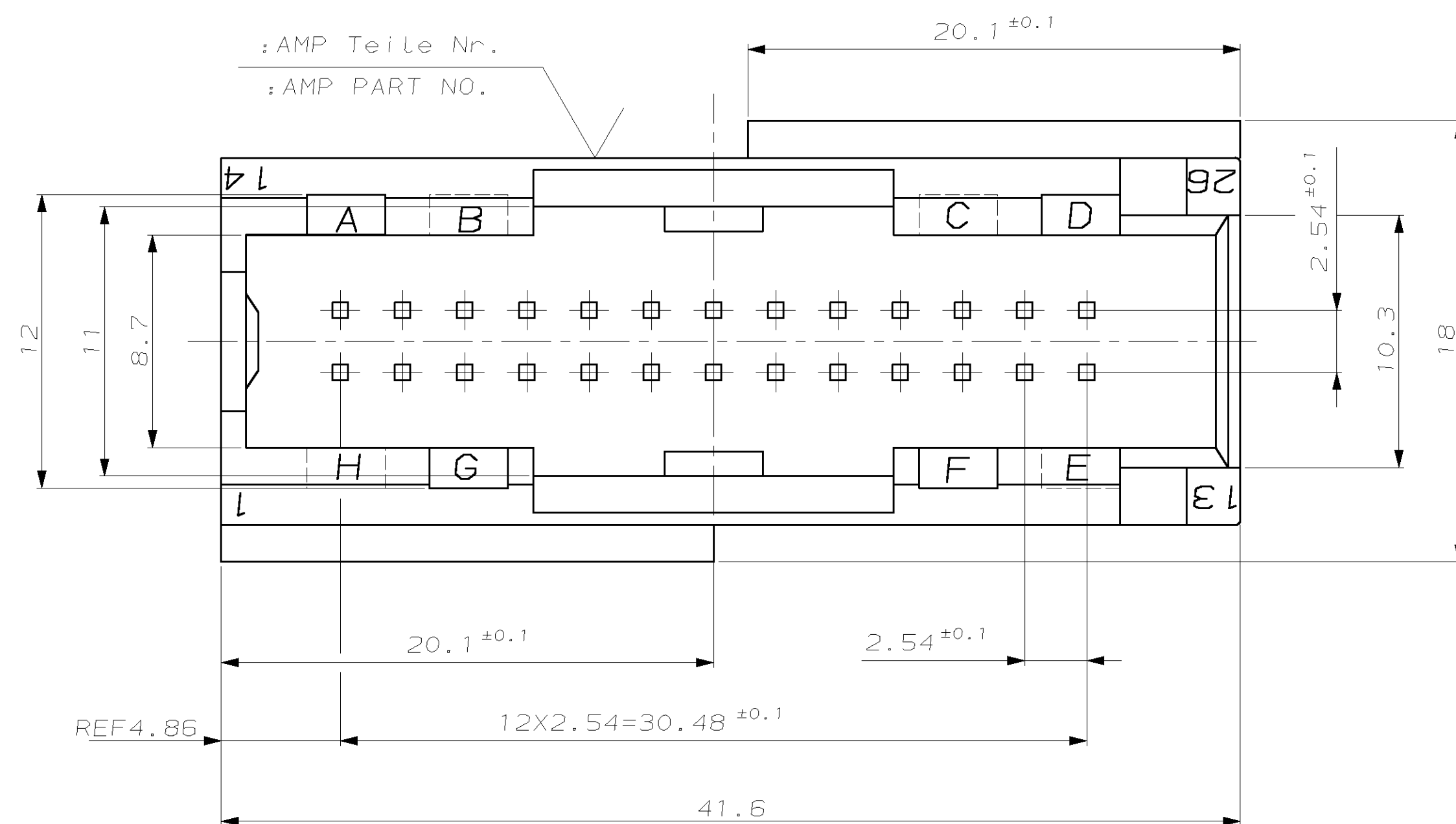


MATERIAL: Cu Sn6 F56  
Oberfläche s. Tabelle  
SURFACE SEE TABLE  
AMP Nr. SPEC. 114-18063

Leiterplatten-Lochbild  
(von Lötseite aus)  
Bohr- $\varnothing$ -Empfehlung  
2:1

PCB-LAYOUT

: AMP Teile Nr.  
: AMP PART NO.

Bemerkungen:  
NOTES:

1. Nur der deutsche Text ist bindend  
ONLY THE GERMAN-LANGUAGE VERSION  
SHALL BE BINDING
2. Stiftpositionslehre AMP Nr.90-244-207-1  
TRUE POSITION GAUGE

(L3)  Verpackung in Produktträger 740961-1  
in Siemens-KLT 9-740971-1  
PACKAGING IN TRAY 740961-1  
IN SIEMENS-KLT 9-740971-1

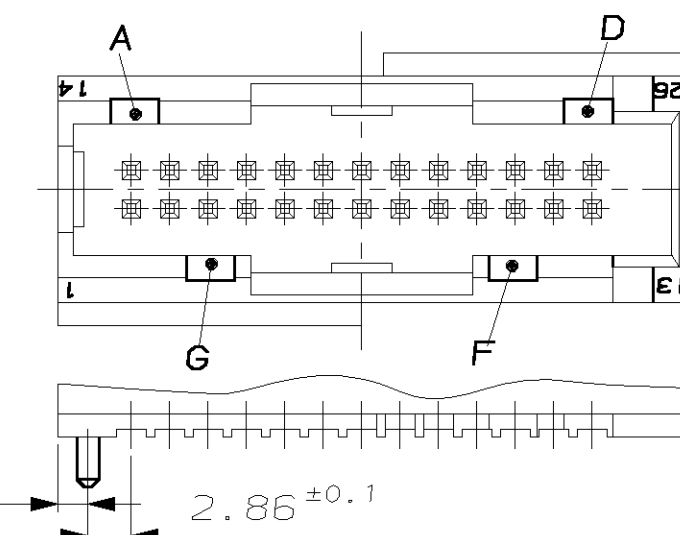
-1 wie gezeichnet  
AS SHOWN

OBERFLÄCHE/SURFACE

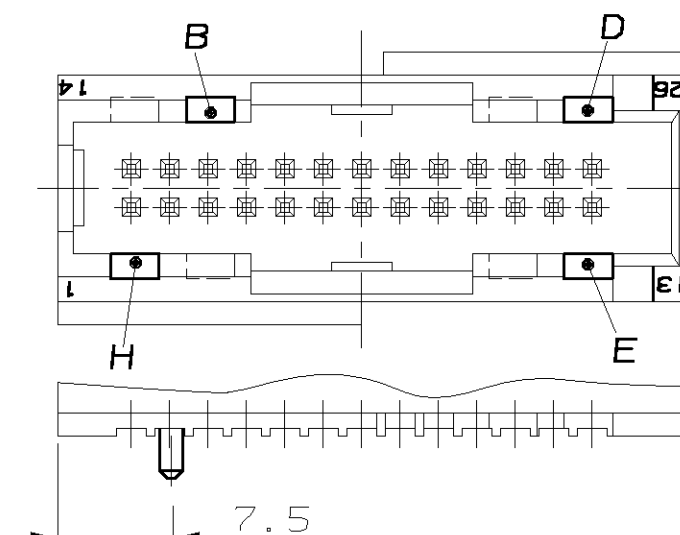
Ausführung Sn:	Schichtdicke 2 bis 4 $\mu\text{m}$ Sn über 1.3 bis 2.2 $\mu\text{m}$ Ni
STYLE:	COAT THICKNESS...UNTIL...OVER...UNTIL...

LOC	POST	REVISIONS ÄNDERUNGEN						
PROJ.	-	F	LTR	DESCRIPTION BESCHREIBUNG	DATE	DWN	APVD	
PROJECT NO.: 86-9771			L1	Zeichnung grundl.geänd./DWG.CHANGED BA51CALLY	18.02.97	C.Beu	J.Hoh	
			L2	BMW Daten entfallen/BMW DATES DELETED	29.10.97	C.Beu	J.Hoh	
			L3	Bemerk.3 hinzu/NOTE 3 ADDED	11.12.97	C.Beu	J.Hoh	
			M	Farbe gelb war bordeauxviolett	18.03.98	C.Beu	J.Hoh	
			N	Material geändert/MAT.CHANGED	12.05.98	C.Beu	J.Hoh	
			N1	EG00 0529 02 (MAT.PA6.6-F13 ADDED)	18.02.02	C.Beu	TS	
			P	EGAO 0819 03	17.11.03	C.Beu	TS	
			P1	EGAO 1089 04	07.05.04	C.Beu	TS	

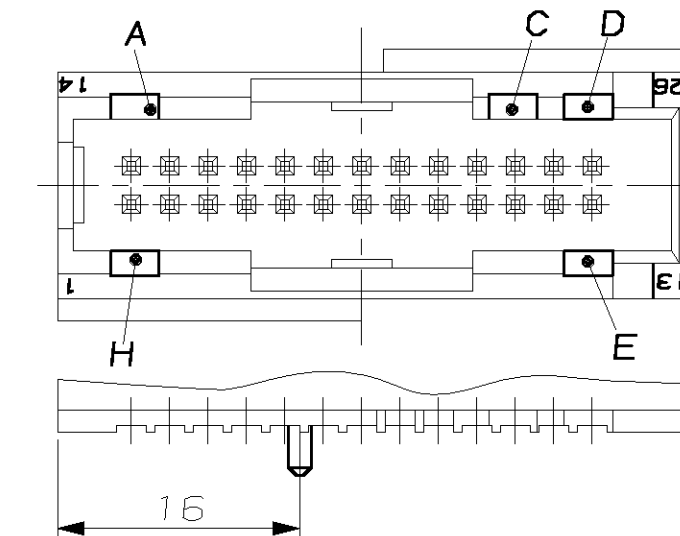
VERSION 1  
827881-1  
A-F-G-D



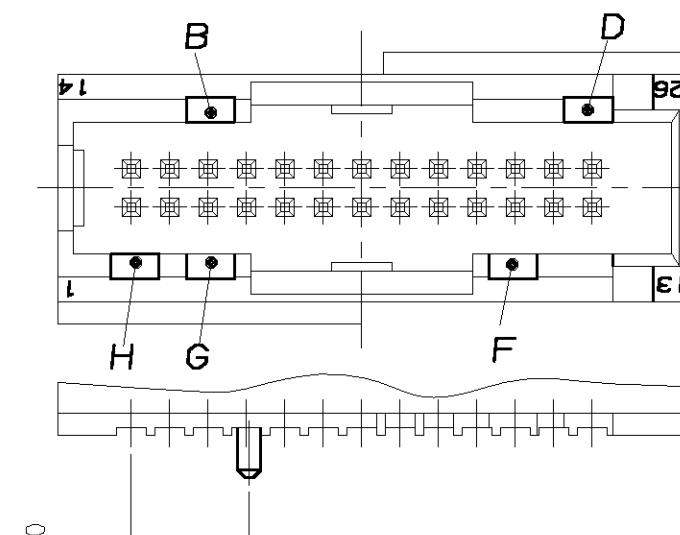
VERSION 2  
827881-2  
B-E-H-D



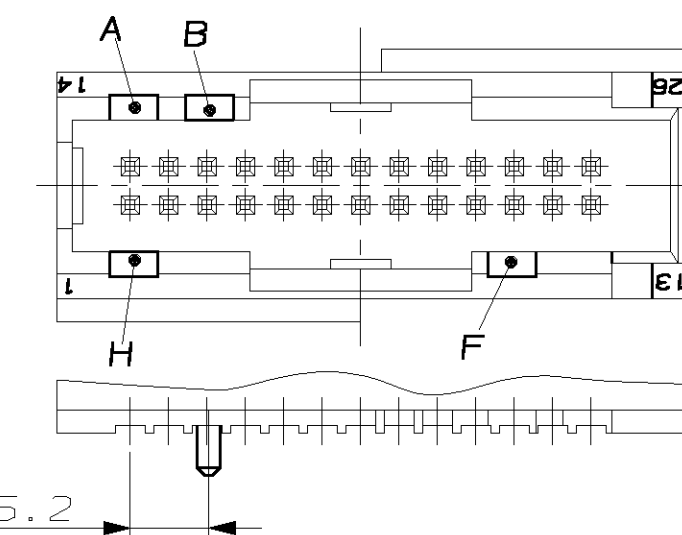
VERSION 3  
827881-3  
A-D-H-C-E



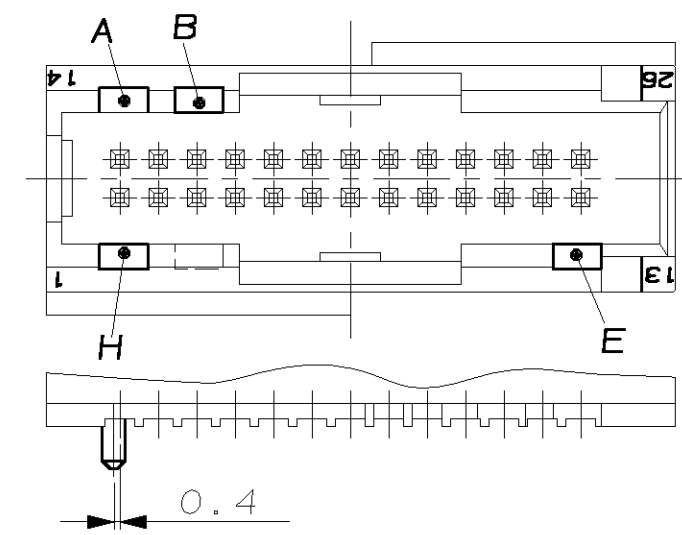
VERSION 4  
827881-4  
**B-D-F-G-H**



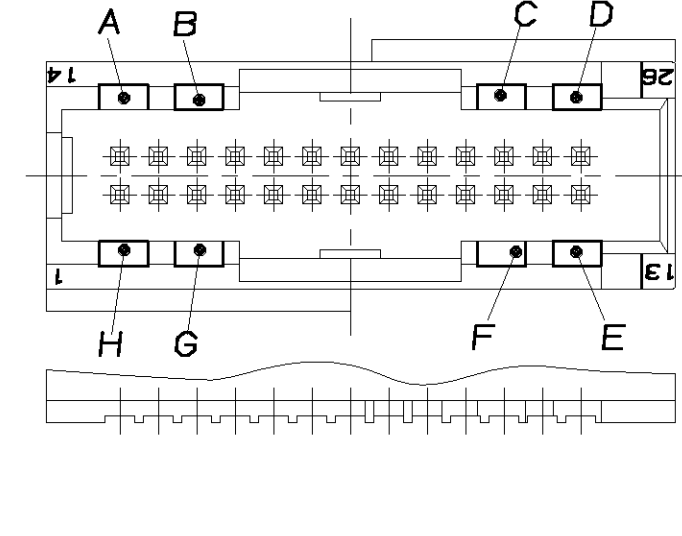
VERSION 5  
827881-5  
A-B-F-H



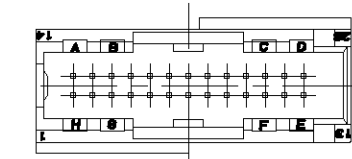
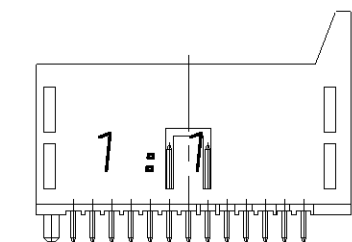
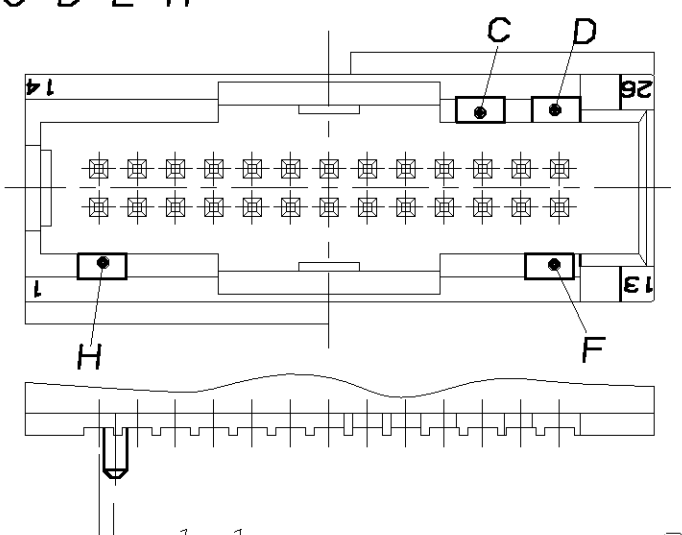
VERSION 6  
827881-6  
A-B-H-E



VERSION 7  
827881-7  
A-B-C-D-E



VERSION 8  
827881-8  
C-D-E-H



827881-1	3	1-827881-1	C	A-D-F-G	-	-	-	-				-
		827881-8	N	C-D-E-H	2	26	Stiftkontakt/MODU II PIN	verzinkt TIN PLATED				
		827881-7	N	A-B-C-D-E-F-G-H	1	1	Stiftwanne/PIN HEADER	rot/RED				927689-8
					2	26	Stiftkontakt/MODU II PIN	verzinkt TIN PLATED				
					1	1	Stiftwanne/PIN HEADER	lila/LILAC				927689-7
		827881-6	N	A-B-E-H	2	26	Stiftkontakt/MODU II PIN	verzinkt TIN PLATED				
					1	1	Stiftwanne/PIN HEADER	schwarz/BLACK				927689-6
		827881-5	N	A-B-F-H	2	26	Stiftkontakt/MODU II PIN	verzinkt TIN PLATED				
					1	1	Stiftwanne/PIN HEADER	brown/BROWN				927689-5
		827881-4	N	B-D-F-G-H	2	26	Stiftkontakt/MODU II PIN	verzinkt TIN PLATED				
					1	1	Stiftwanne/PIN HEADER	grün/GREEN				927689-4
		827881-3	N	A-C-D-E-H	2	26	Stiftkontakt/MODU II PIN	verzinkt TIN PLATED				
					1	1	Stiftwanne/PIN HEADER	blau/BLUE				927689-3
		827881-2	N	B-D-E-H	2	26	Stiftkontakt/MODU II PIN	verzinkt TIN PLATED				
					1	1	Stiftwanne/PIN HEADER	natur/NATURAL				927689-2
		827881-1	P	A-D-F-G	2	26	Stiftkontakt/MODU II PIN	verzinkt TIN PLATED				
					1	1	Stiftwanne/PIN HEADER	gelb YELLOW (H)				927689-1
MADE FROM		AMP BESTELL-NR. ORDER NO.	REV.	KOD. COD.	POS.	STK. QTY.	BENENNUNG DESCRIPTION	OBERFLÄCHE SURFACE FARBE/COLOUR	ARTIKEL-NR. KIND WEIGHT	GRAMM G	Passend zu: Abdeckkappe SUITABLE FOR: SHIELD	AMP

# Mouser Electronics

Authorized Distributor

Click to View Pricing, Inventory, Delivery & Lifecycle Information:

[TE Connectivity:](#)

[827881-1](#)