

THIS DRAWING IS UNPUBLISHED.

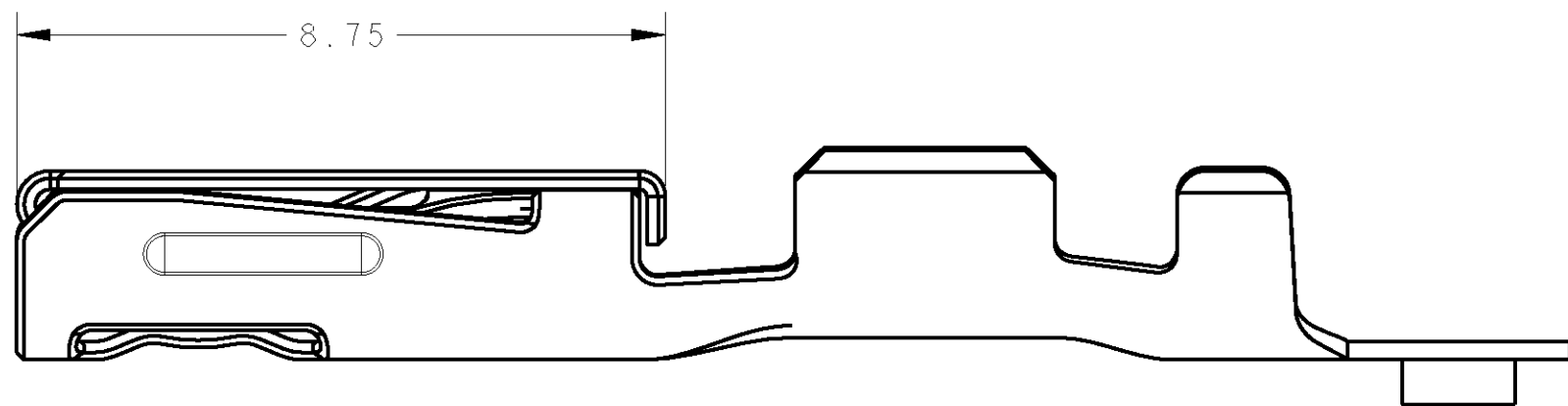
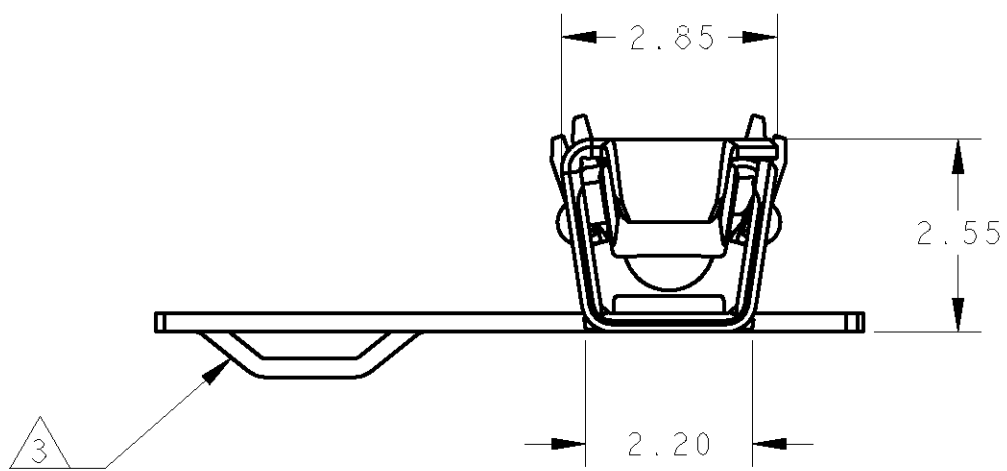
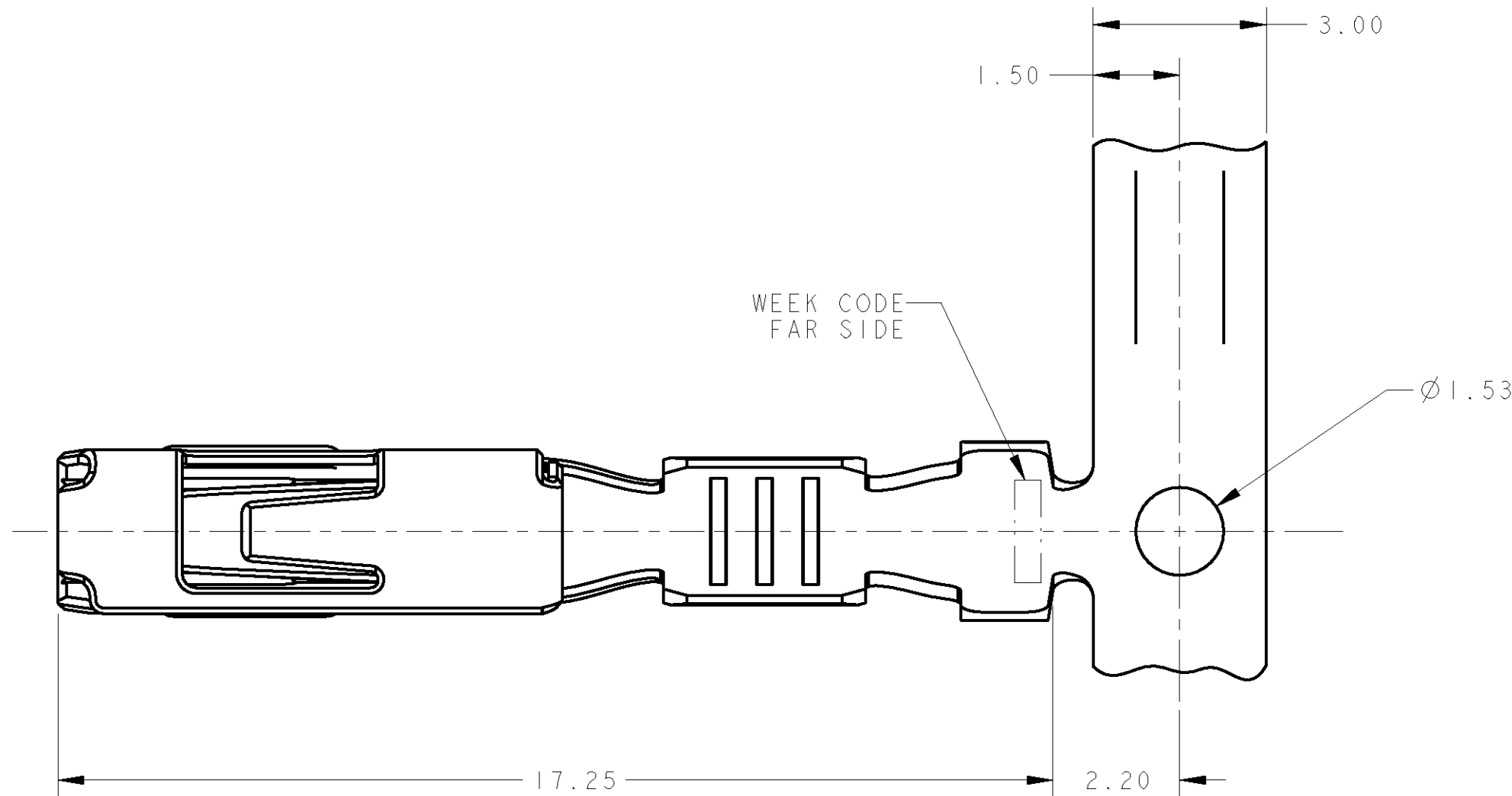
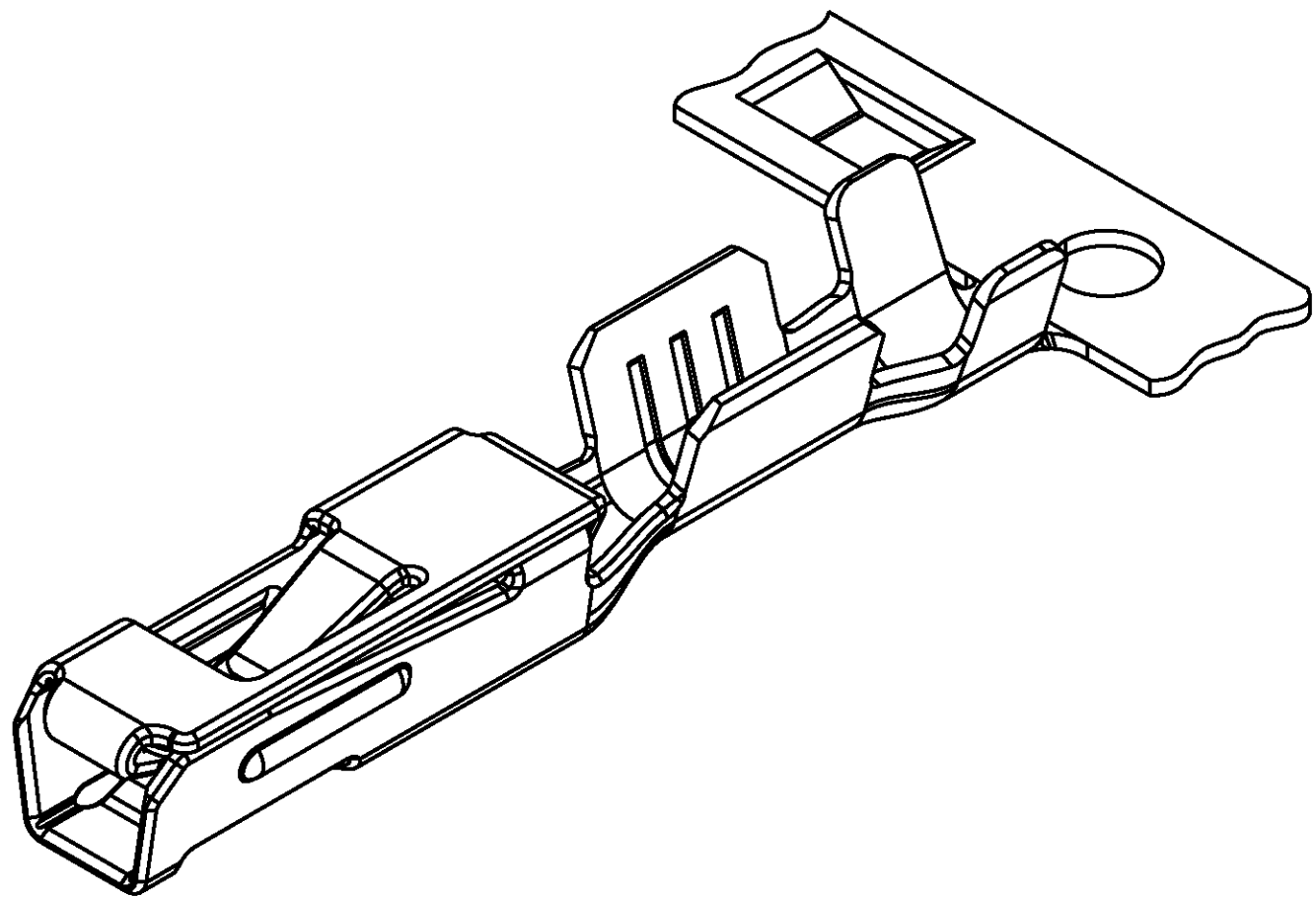
RELEASED FOR PUBLICATION

20

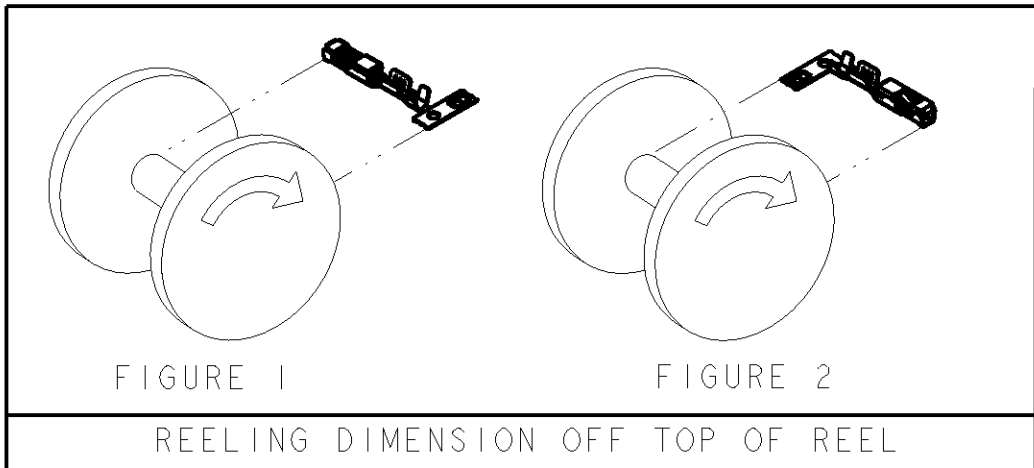
© COPYRIGHT 20

BY TYCO ELECTRONICS CORPORATION. ALL RIGHTS RESERVED.

LOC	DIST	REVISIONS				
GE	00	P	LTR	DESCRIPTION	DATE	DWN APVD
			A	RELEASED PER EC 0K40-0668-02	25JUN2002	VMK VMK
			B	REV PER EC 0K80-0298-02	13DEC2002	RGV AME
			C	REV PER ECR 07-018498	22AUG2007	RGV DHC



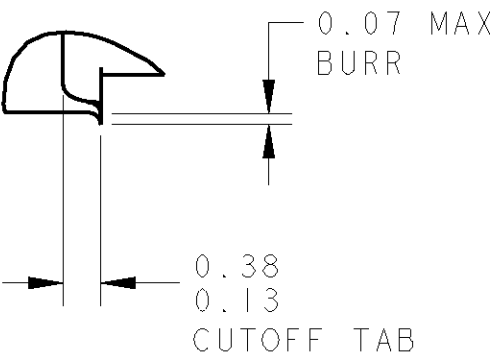
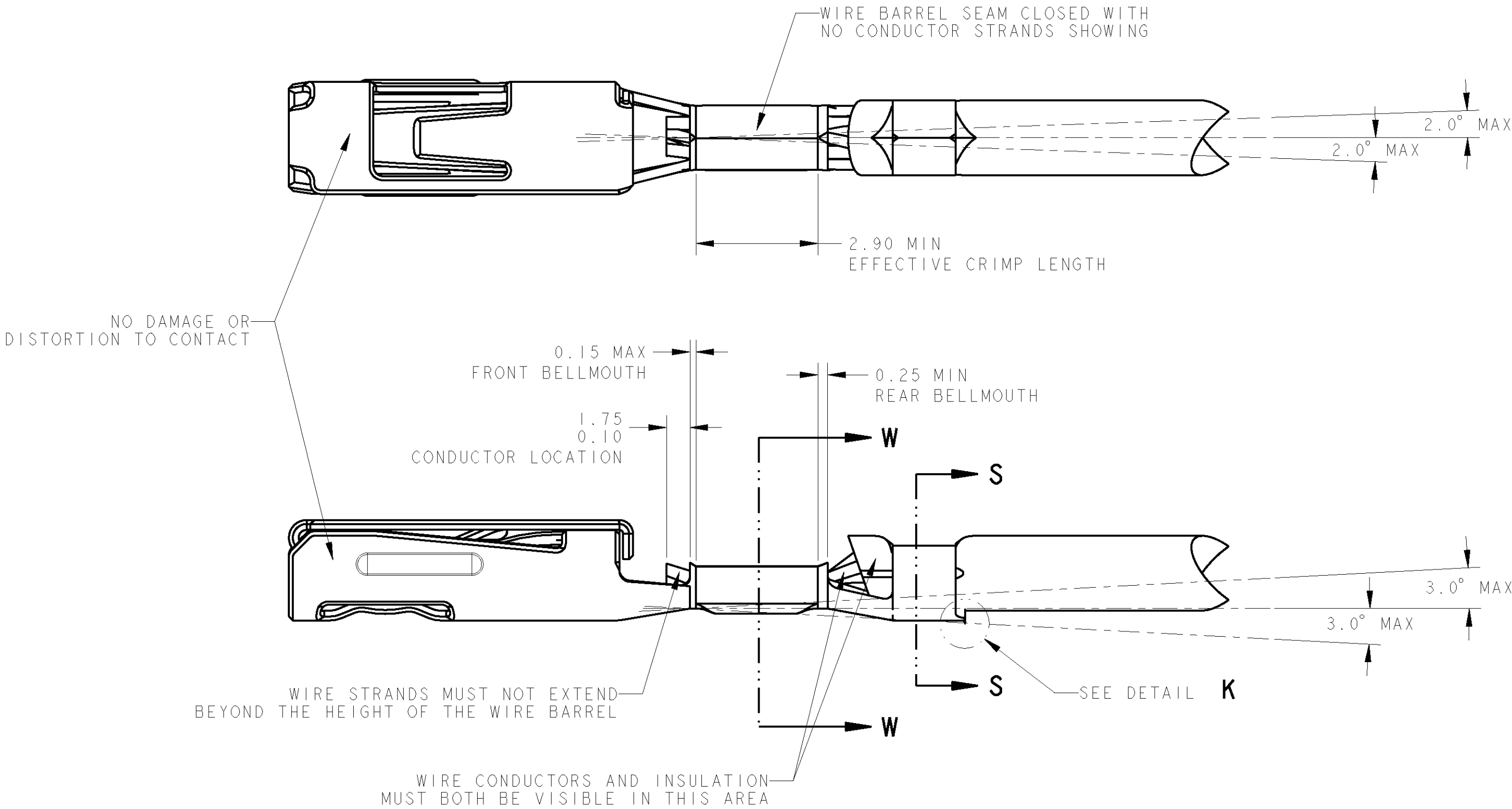
- 1 FINISH: PLATED 0.001 MIN THICK TIN.
2. PART LUBRICATED WITH ANTI-FRETTING LUBRICANT, MSDS 125-6344.
- 3 FEATURE ON CARRIER STRIP IS DEPRESSED ON TIN PLATED PRODUCT. FEATURE APPEARS ADJACENT TO EVERY OTHER CONTACT MIN.
- 4 SEE FIGURE 1 FOR REELING DIRECTION.
- 5 SEE FIGURE 2 FOR REELING DIRECTION.
6. NOTE DELETED.
7. NOTE DELETED.
8. SEE SHEET 2 FOR ADDITIONAL CRIMPING REQUIREMENTS.



THIS DRAWING IS A CONTROLLED DOCUMENT FOR TYCO ELECTRONICS CORPORATION. IT IS SUBJECT TO CHANGE AND THE CONTROLLING ENGINEERING ORGANIZATION SHOULD BE CONTACTED FOR THE LATEST REVISION.				DWN J. R. SHUEY 28FEB2000	Tyco Electronics Harrisburg, PA 17105-3608		
DIMENSIONS: mm				CHK J. M. MYER 28FEB2000	NAME CONTACT, FEMALE, 1.5mm, TIN PLATED		
TOLERANCES UNLESS OTHERWISE SPECIFIED: 0 PLC ± 1 PLC ± 2 PLC ±0.20 3 PLC ± 4 PLC ± ANGLES ±3° FINISH				APVD K. DENLINGER 28FEB2000	SIZE A2		
MATERIAL 0.25 THICK COPPER ALLOY				PRODUCT SPEC USCAR-2 REV 3 DATED APRIL 2001	CAGE CODE 00779		
				APPLICATION SPEC 114-13091	DRAWING NO 638652		
				WEIGHT -	RESTRICTED TO -		
CUSTOMER DRAWING				SCALE 10:1	SHEET 1 OF 2		

APPLIES TO ALL TERMINALS  
NOTE: ALL DIMENSIONS ARE METRIC (MM)

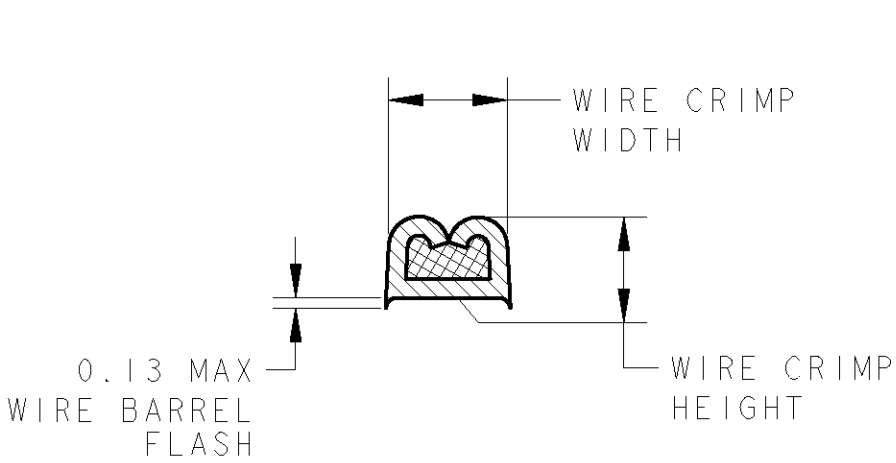
P	LTR	DESCRIPTION	DATE	DWN	APVD
-	-	SEE SHEET 1	-	-	-



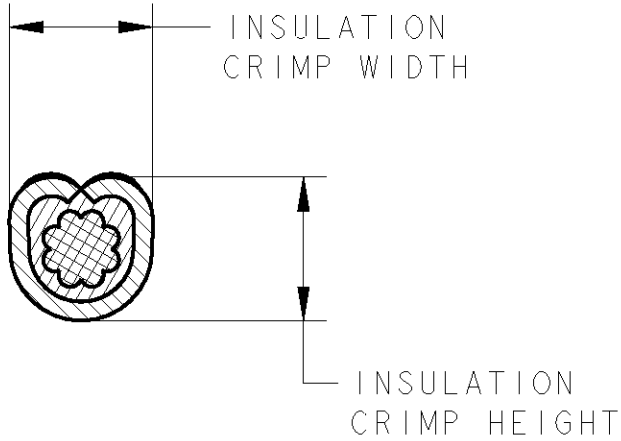
DETAIL K  
SCALE 20:1

WIRE			CONTACT			
SIZE AWG	INSULATION DIAMETER	STRIP LENGTH	WIRE BARREL		INSULATION BARREL	
			CRIMP HEIGHT	CRIMP WIDTH	CRIMP HEIGHT	CRIMP WIDTH
20	1.40-1.95	5.05-6.60	1.03±0.05	1.753-1.803	1.80±0.10	2.03±0.05
18	1.60-2.20		1.13±0.05	1.753-1.803	2.00±0.10	2.03±0.05
16	1.90-2.40		1.36±0.05	2.134-2.184	2.25±0.10	2.54±0.05
14	2.25-2.75		1.61±0.05	2.134-2.184	2.60±0.10	2.54±0.05

ALL TABLE DIMENSIONS ARE METRIC (mm)



SECTION W-W



SECTION S-S

THIS DRAWING IS A CONTROLLED DOCUMENT FOR TYCO ELECTRONICS CORPORATION. IT IS SUBJECT TO CHANGE AND THE CONTROLLING ENGINEERING ORGANIZATION SHOULD BE CONTACTED FOR THE LATEST REVISION.		DWN J. R. SHUEY 28FEB2000	Tyco Electronics Harrisburg, PA 17105-3608	
DIMENSIONS: PER ABOVE		CHK J. M. MYER 28FEB2000	NAME CONTACT, FEMALE, 1.5mm, TIN PLATED	
TOLERANCES UNLESS OTHERWISE SPECIFIED: 0 PLC ± 1 PLC ± 2 PLC ± 3 PLC ± 4 PLC ± ANGLES ± FINISH		APVD K. DENLINGER 28FEB2000	PRODUCT SPEC - APPLICATION SPEC - WEIGHT -	
MATERIAL -		CUSTOMER DRAWING		RESTRICTED TO -
SCALE 10:1		SHEET 2 OF 2		REV C

# Mouser Electronics

Authorized Distributor

Click to View Pricing, Inventory, Delivery & Lifecycle Information:

[TE Connectivity:](#)

[638652-2 \(Cut Tape\)](#) [638652-2 \(Loose Piece\)](#) [638652-2 \(Mouser Reel\)](#)