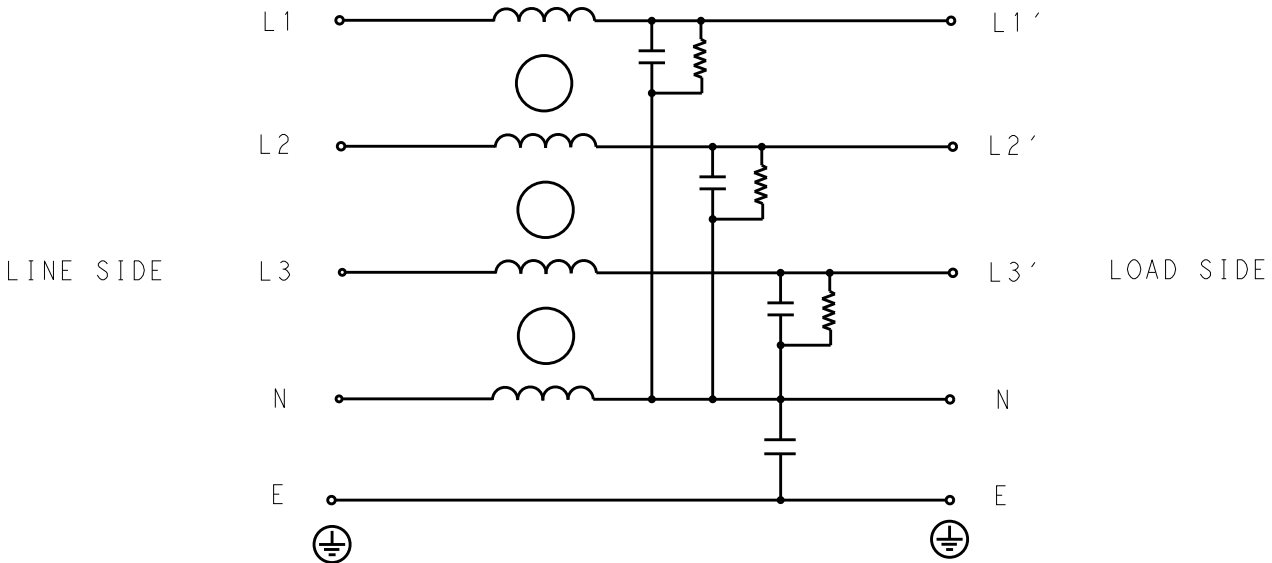


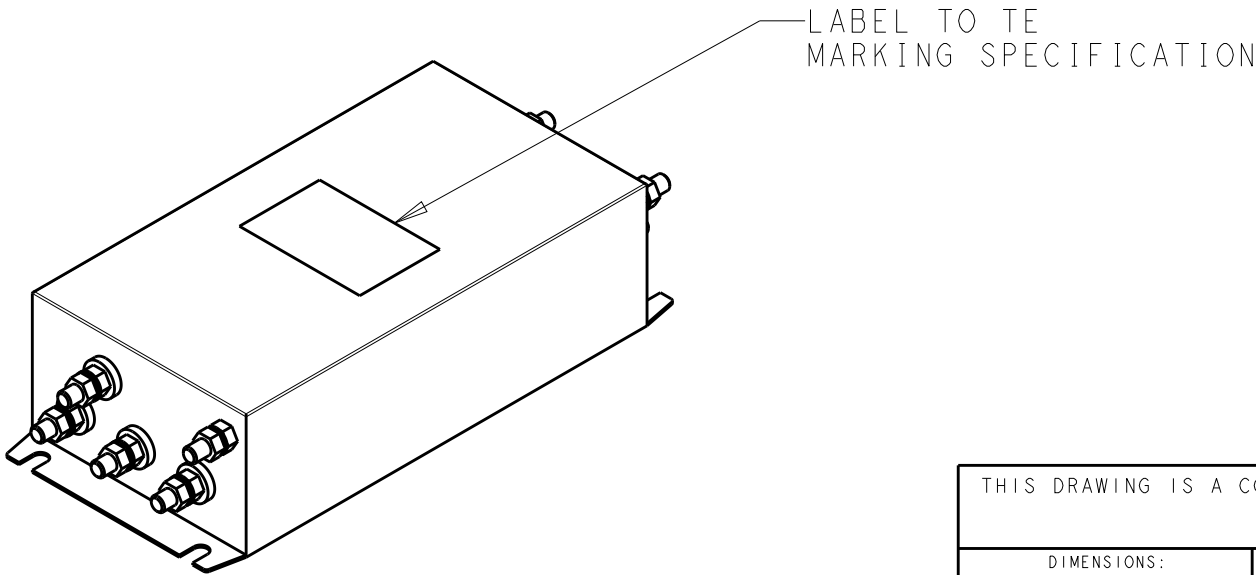
| P | LTR | DESCRIPTION | DATE | DWN | APVD |
|---|-----|-----------------|-----------|-----|------|
| | B | INITIAL RELEASE | 07JUL2020 | SB | LI |
| | | | | | |
| | | | | | |



SCHEMATIC

TYPICAL INSERTION LOSS
COMMON MODE 50/50Ω; DIFFERENTIAL MODE 50/50Ω

| MHz | 0.01 | 0.05 | 0.15 | 0.5 | 1 | 3 | 5 | 10 | 30 |
|-----|------|------|------|-----|----|----|----|----|----|
| CM | 5 | 5 | 8 | 15 | 20 | 22 | 35 | 42 | 45 |
| DM | 5 | 6 | 10 | 20 | 24 | 30 | 36 | 38 | 42 |



LABEL TO TE
MARKING SPECIFICATION

SAFETY ORGANIZATIONS

THIS FILTER WILL BE FORMALLY RECOGNIZED, CERTIFIED OR APPROVED BY THE LISTED AGENCY. THEREFORE, ALL TEST/REQUIREMENTS SPECIFIED IN THE LATEST REVISION OF THE FOLLOWING AGENCY STANDARDS WILL BE MET:

UL RECOGNIZED* 80A 520V 50Hz/60Hz 40°C
CSA CERTIFIED** 80A 520V 50Hz/60Hz 40°C

*31 JULY 2020 ; **31 AUGUST 2020

OPERATING SPECIFICATION

LINE CURRENT/VOLTAGE: 80A, 520VAC
LINE FREQUENCY: 50/60Hz

MAXIMUM LEAKAGE CURRENT: 6mA @ 230VAC, 50Hz

OPERATING AMBIENT TEMPERATURE RANGE @ RATED CURRENT: -25°C TO +40°C

IN AN AMBIENT, T_a, HIGHER THAN 40°C, THE MAXIMUM OPERATING CURRENT, I_o, IS AS FOLLOWS:

$$I_o = I_r \sqrt{\frac{85 - T_a}{45}}$$

RELIABILITY SPECIFICATIONS

STORAGE TEMPERATURE: -40°C TO +85°C
HUMIDITY: 21 DAYS @ 40°C AND 95% RH

TEST SPECIFICATIONS

INDUCTANCE, NOMINAL: 0.2 mH

CAPACITANCE @ 1kHz

LINE TO GROUND, NOMINAL: 22nF
LINE TO NEUTRAL, NOMINAL: 5μF

DISCHARGE RESISTOR

L/G I.R. 2MΩ 2W
L/L I.R. 2MΩ 2W
L/N I.R. 1MΩ 2W
N/G I.R. 680kΩ 2W

IR (NO DISCHARGE RESISTOR) 20°C, 50% RH AND 100VDC, MIN: 6MΩ

RECOMMENDED RECEIVING INSPECITON HIPOT

LINE TO GROUND FOR 1 MINUTE: 2856VDC
LINE TO LINE FOR 1 MINUTE: 2236VDC
LINE TO NEUTRAL FOR 1 MINUTE: 1290VDC

FILTER APPROVAL

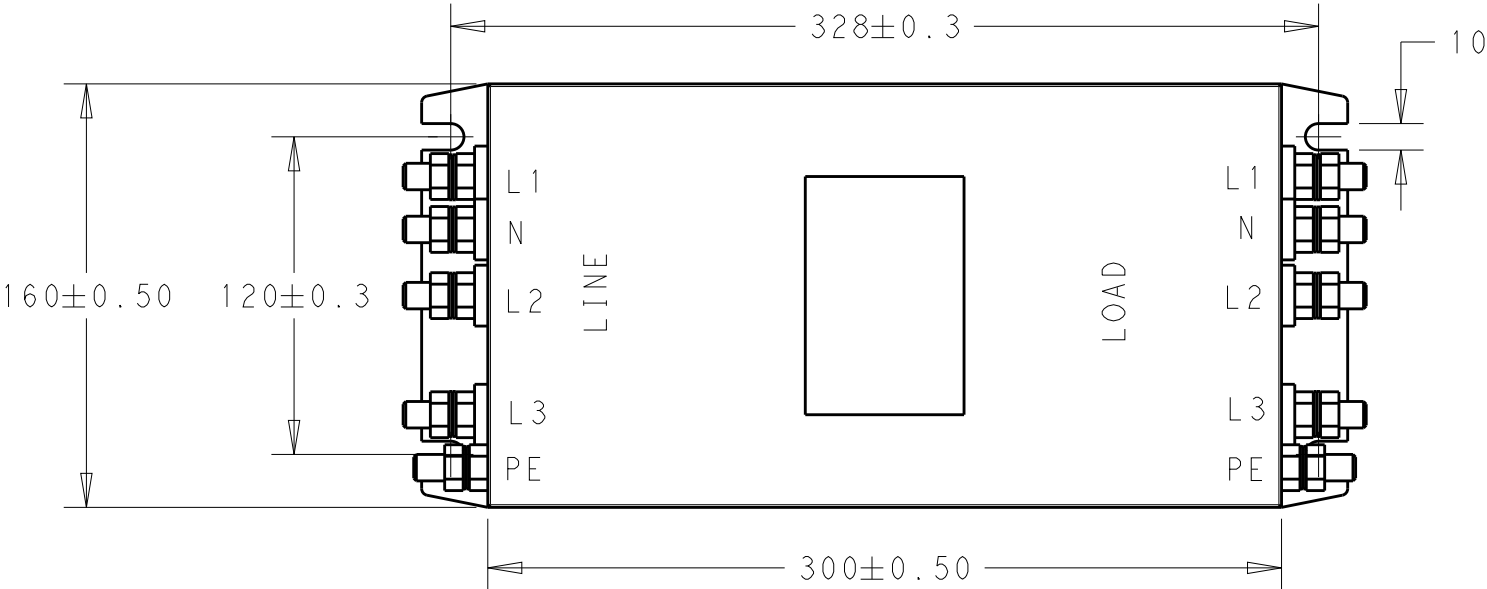
THE BEST WAY TO SELECT AND QUALIFY A FILTER IS FOR YOUR ENGINEERING TO TEST THE UNIT IN YOUR EQUIPMENT.


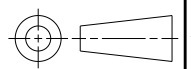
| | | | | | |
|--|--|--------------------------------------|--|----------------------------|--------------------|
| THIS DRAWING IS A CONTROLLED DOCUMENT. | | DWN SHRICARANA B 20FEB2020 | TE Connectivity | | |
| DIMENSIONS: mm | | CHK LEO IRUDHAYARAJ 20FEB2020 | | | |
| | | APVD LEO IRUDHAYARAJ 20FEB2020 | | | |
| TOLERANCES UNLESS OTHERWISE SPECIFIED: | | PRODUCT SPEC | | | |
| 0 PLC ±0.5 1 PLC ±0.4 2 PLC ±0.4 3 PLC ±0.130 4 PLC ±0.0500 ANGLES ±0.5 | | APPLICATION SPEC | NAME POWER LINE FILTER 80KESS6BFPW | | |
| MATERIAL | | WEIGHT | SIZE A300779 | CAGE CODE C-5-1609966-2 | RESTRICTED TO - |
| FINISH | | CUSTOMER DRAWING | SCALE 1:4 | SHEET 1 OF 2 | REV B |

| P | LTR | DESCRIPTION | DATE | DWN | APVD |
|---|-----|-------------|------|-----|------|
| | | SEE SHEET 1 | | | |
| | | | | | |
| | | | | | |
| | | | | | |

NOTE 1 GROUND CONNECTION:
DO NOT LOOSEN INNER GROUND NUTS.
TORQUE OUTER TERMINAL /GROUND NUTS: 3.5-6Nm

NOTE 2 INPUT OUTPUT CONNECTION TERMINAL
AWG SIZE: XXX
THREADED BOLT SIZE FOR TERMINAL: M8
THREADED BOLT SIZE FOR GROUND: M8



| | | | | | |
|---|--|--------------------------------------|---|--|--|
| THIS DRAWING IS A CONTROLLED DOCUMENT. | | DWN SHRICHARANA B 20FEB2020 |  TE Connectivity | | |
| DIMENSIONS: mm | | CHK LEO IRUDHAYARAJ 20FEB2020 | | | |
| TOLERANCES UNLESS OTHERWISE SPECIFIED: | | APVD LEO IRUDHAYARAJ 20FEB2020 | NAME POWER LINE FILTER 80KESS6BFPW | | |
|  | | PRODUCT SPEC | SIZE A300779 | | |
| 0 PLC ±0.5 1 PLC ±0.5 2 PLC ±0.40 3 PLC ±0.130 4 PLC ±0.0500 ANGLES ±0.5 | | APPLICATION SPEC | CAGE CODE C-5-1609966-2 | | |
| MATERIAL | | WEIGHT | DRAWING NO C-5-1609966-2 | | |
| FINISH | | CUSTOMER DRAWING | RESTRICTED TO | | |
| | | | SCALE 7:20 SHEET 2 OF 2 REV B | | |

Mouser Electronics

Authorized Distributor

Click to View Pricing, Inventory, Delivery & Lifecycle Information:

[TE Connectivity:](#)

[5-1609966-2](#)