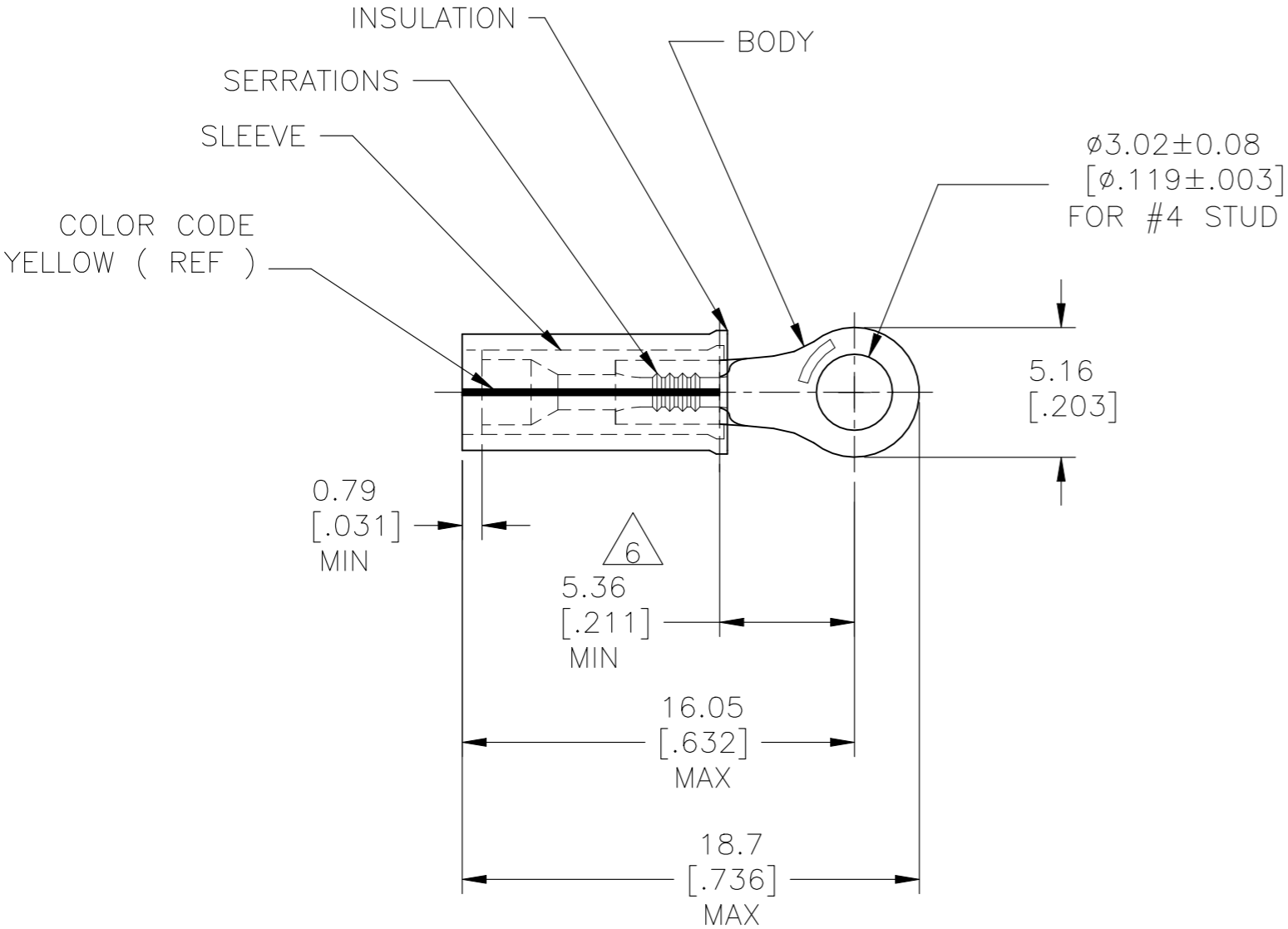



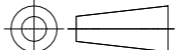


REVISIONS					
P	LTR	DESCRIPTION	DATE	DWN	APVD
	G4	REVISED PER ECN-22-156403	06JUN2022	RK	CSD



- 1 MUST BE CRIMPED WITH A 22-18 OR 22-16 P.I.D.G. (RED) TOOL.
- 2 WIRE INSULATION DIA: 0.81-2.08 [.032-.082].
- 3 TONGUE MATERIAL THK: 0.69±0.05 [.027±.002].
- 4 BODY & SLEEVE: TIN/LEAD (93-7) PLATE PER ASTM B545. (3% MIN LEAD CONTENT).
- 5 MATERIAL: BODY & SLEEVE- CU PER ASTM B152 INSULATION - PVF2, COLOR - NATURAL.
- 6 DIMENSION APPLIES FROM EDGE OF METAL WIRE BARREL TO CENTER OF STUD HOLE.

M7928/4-144, CLASS 1 M7928/13-144, CLASS 1	1000	LOOSE PIECE	53401-1
MILITARY	QTY	PACKAGE TYPE	PART NO.

AMP INCORPORATED CUSTOMER SERVICE SYSTEMS		MAX RECOMMENDED OPERATING TEMPERATURE: 150°C [302°F] MAX
FOR ADDITIONAL PRODUCT INFORMATION OR COPIES OF DRAWINGS AND TECHNICAL DOCUMENTS	PRODUCT INFORMATION CENTER 1-800-522-6752	VOLTAGE RATING: N/A
FOR APPLICATION TOOLING INFORMATION	TOOLING ASSISTANCE CENTER 1-800-722-1111	CIRCULAR MIL AREA: 0.10-0.26mm² [202-509] STRANDED
FOR ORDER ENTRY	1-800-526-5142	THIS DRAWING IS A CONTROLLED DOCUMENT FOR AMP INCORPORATED. IT IS SUBJECT TO CHANGE AND THE CONTROLLING ENGINEERING ORGANIZATION SHOULD BE CONTACTED FOR THE LATEST REVISION.

THIS DRAWING IS A CONTROLLED DOCUMENT.		DWN JR RUTH 27MAY05		<div>TE Connectivity</div>						
DIMENSIONS: mm [INCHES]		CHK T MICHELUTTI 23MAY05								
	<div>TOLERANCES UNLESS OTHERWISE SPECIFIED:</div> <div>0 PLC ± -</div> <div>1 PLC ± -</div> <div>2 PLC ± 0.20[.008]</div> <div>3 PLC ± -</div> <div>4 PLC ± -</div> <div>ANGLES ± -</div>	APVD T MICHELUTTI 23MAY05		NAME TERMINAL, RING TONGUE, PVF2 , PIDG WIRE SIZE: 26-24 AWG						
		PRODUCT SPEC —								
		APPLICATION SPEC NOT AVAILABLE								
MATERIAL		WEIGHT —		SIZE A3	CAGE CODE 00779	DRAWING NO C-53401	RESTRICTED TO —			
- 		FINISH - 		CUSTOMER DRAWING				SCALE 4:1	SHEET 1 of 1	REV G4

Mouser Electronics

Authorized Distributor

Click to View Pricing, Inventory, Delivery & Lifecycle Information:

[TE Connectivity:](#)

[53401-1](#) [M7928/4-144](#)