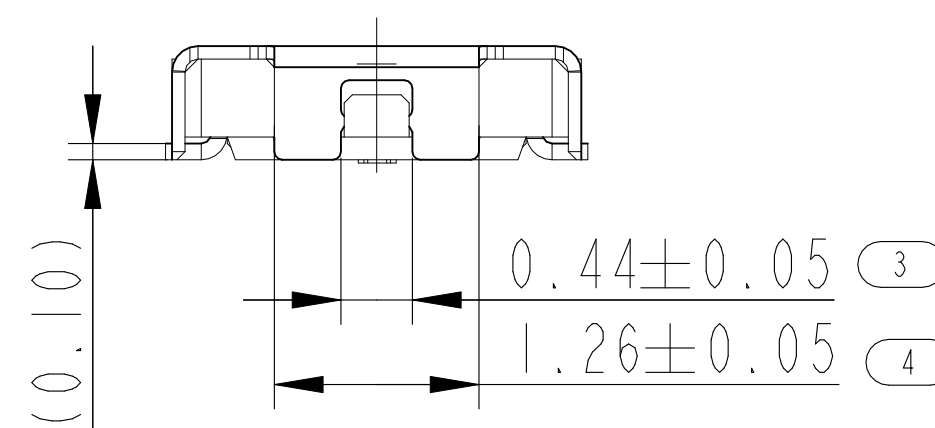
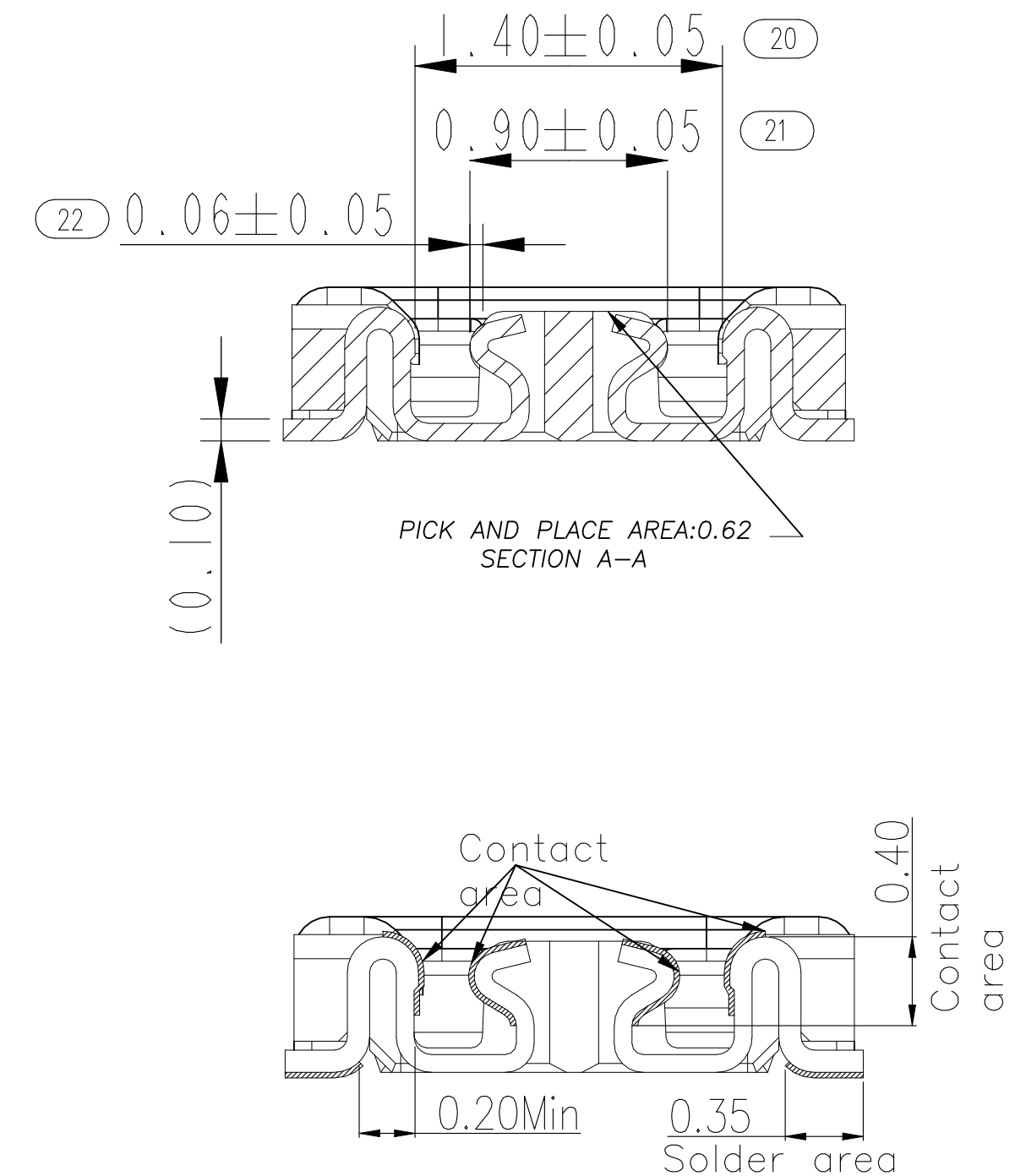


NOTE:



- 1.MATERIAL SPECIFICATION:
 - 1-1.HOUSING :LCP, UL94V-0, BLACK.
 - 1-2.CONTACTS: COPPER ALLOY.
 - 1-3.SHELL: COPPER ALLOY.
- 2.PLATING SPECIFICATION:
 - 2-1.CONTACTS:

Ni 80~150u". UNDER PLATED OVER ALL.
Au4u"MIN PLATED ON THE FUNCTIONAL AREA OF CONTACT.
Au3~8u" PLATED ON SOLDER AREA.
 - 2-2.SHELL:

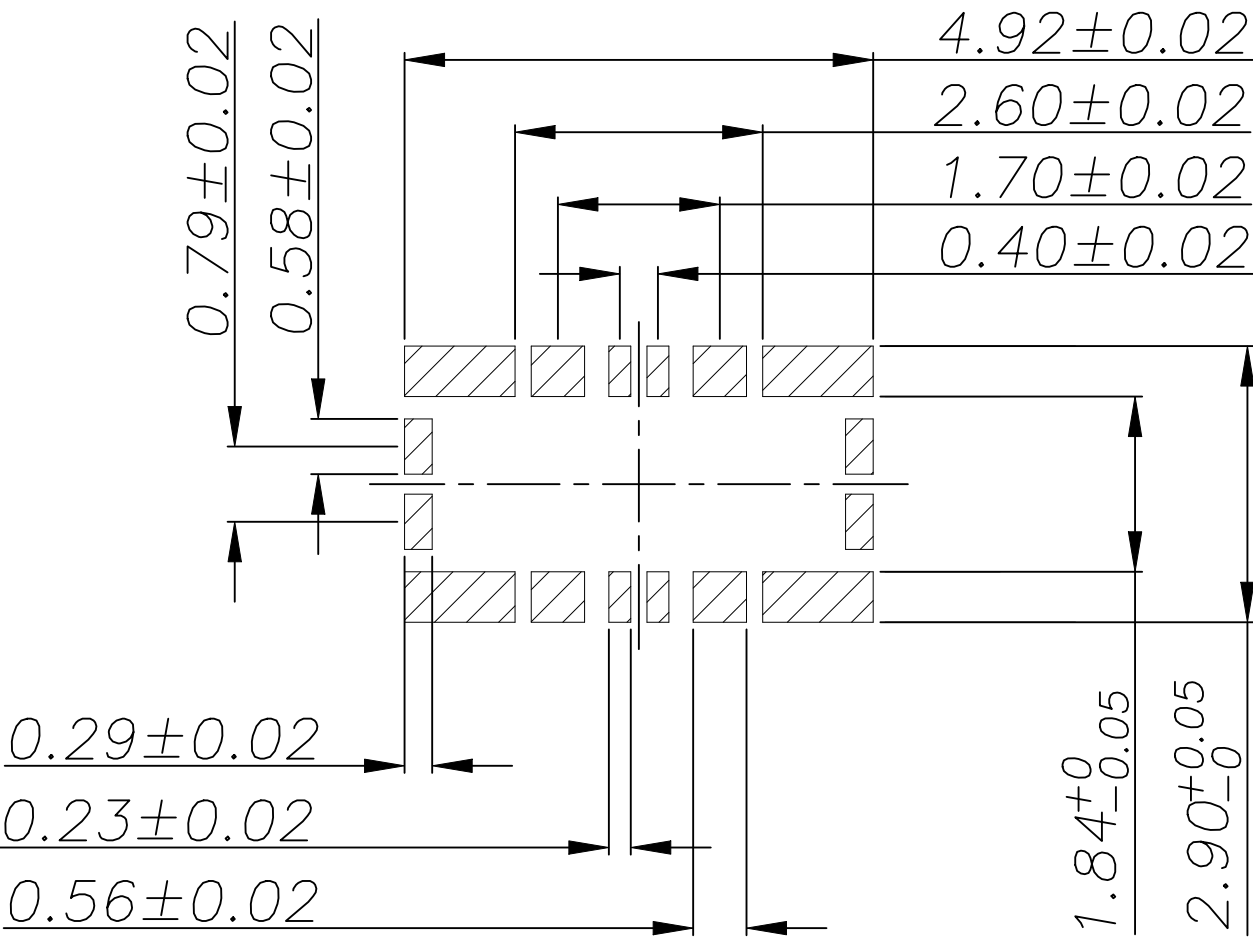
Ni 80~150u". UNDER PLATED OVER ALL.
Au3~8u" PLATED ON SOLDER AREA.



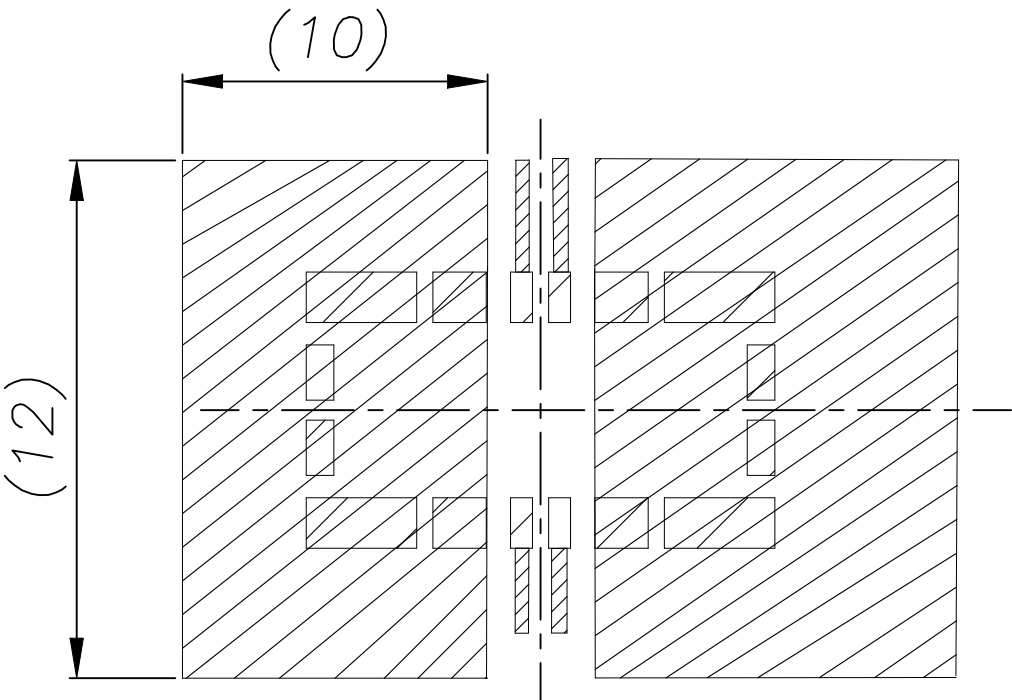
2386586-1

THIS DRAWING IS A CONTROLLED DOCUMENT.		DWN Jone Ji 05FEB2021		 TE Connectivity Ltd.	
		CHK Niki S 05FEB2021			
DIMENSIONS: mm 		TOLERANCES UNLESS OTHERWISE SPECIFIED: 0 PLC ± 0.4 1 PLC ± 0.25 2 PLC ± 0.15 3 PLC ± 0.1 4 PLC ± - ANGLES ± 3 FINISH		NAME FINE PITCH BTB 8 POS REC - -	
MATERIAL -		PRODUCT SPEC - APPLICATION SPEC - WEIGHT -			
		DWN Jone Ji 05FEB2021		SIZE A2	
		CHK Niki S 05FEB2021		CAGE CODE 00779	
		APVD Niki S 05FEB2021		DRAWING NO C-2386586	
		PRODUCT SPEC -		RESTRICTED TO -	
		APPLICATION SPEC -			
		WEIGHT -			
		CUSTOMER DRAWING		SCALE 8:1	
				SHEET 1 OF 3	
				REV A	

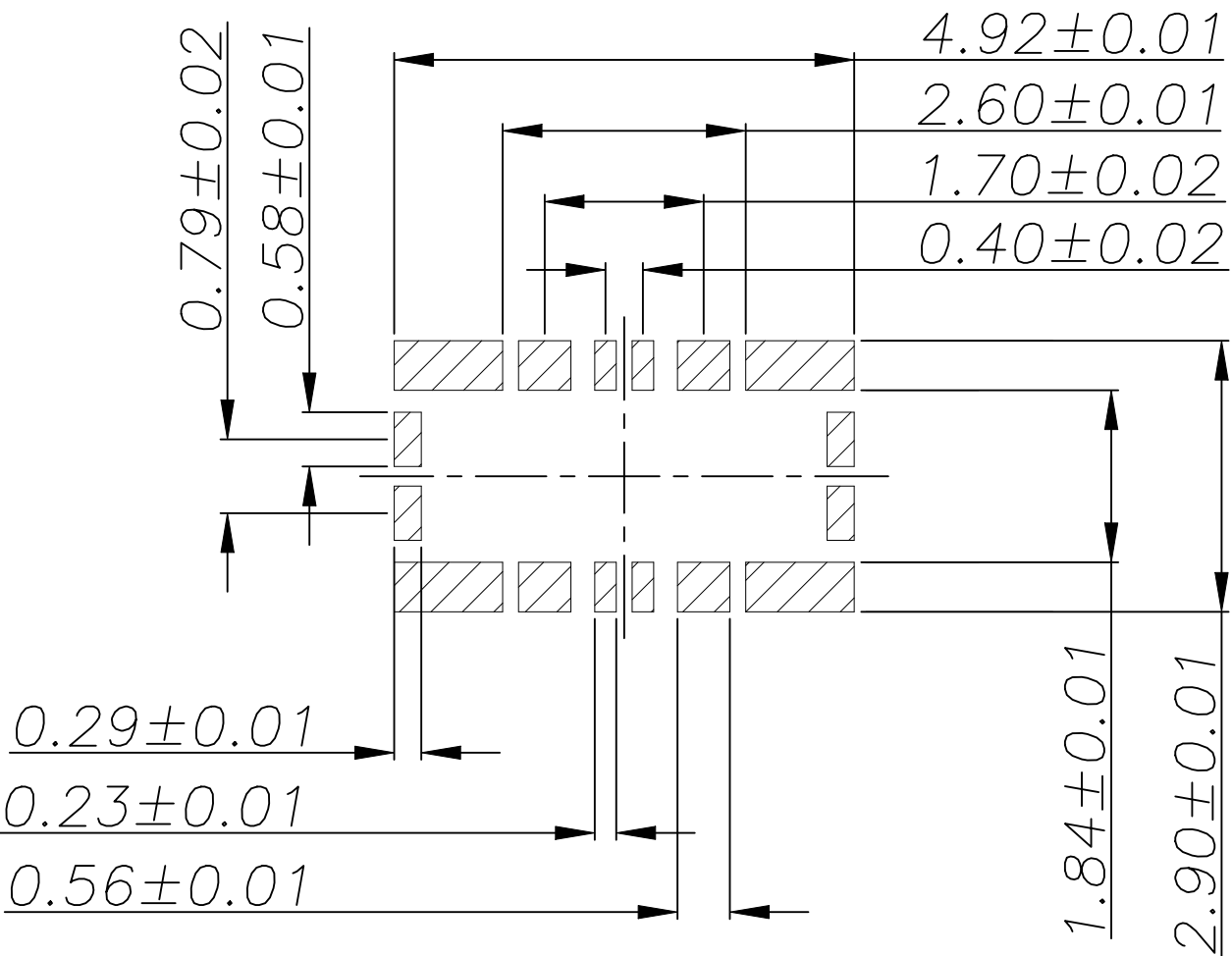
P	LTR	DESCRIPTION	DATE	DWN	APVD
-	-	SEE SHEET 1	-	-	-



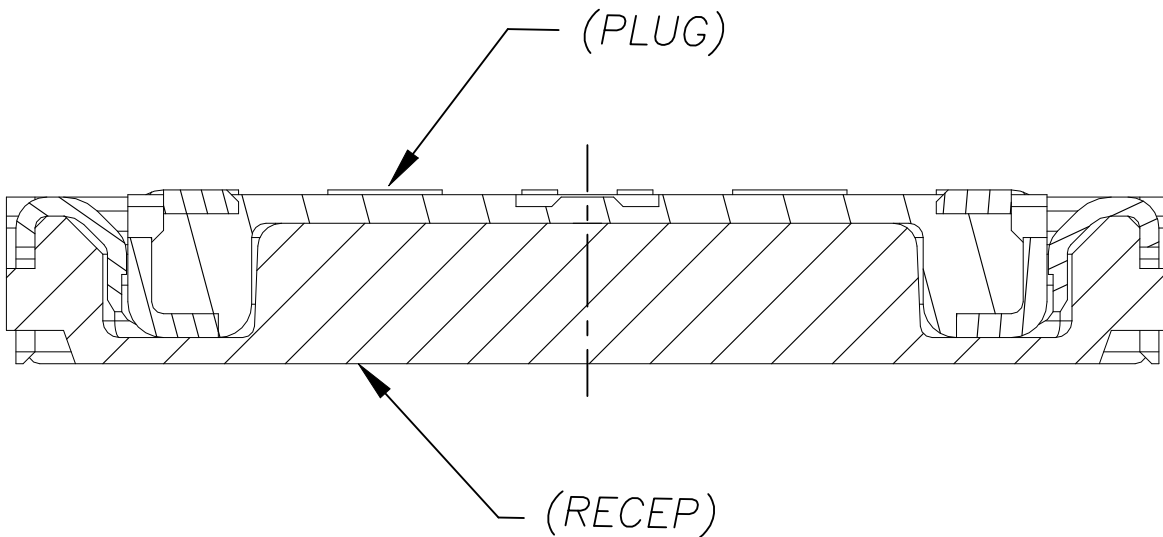
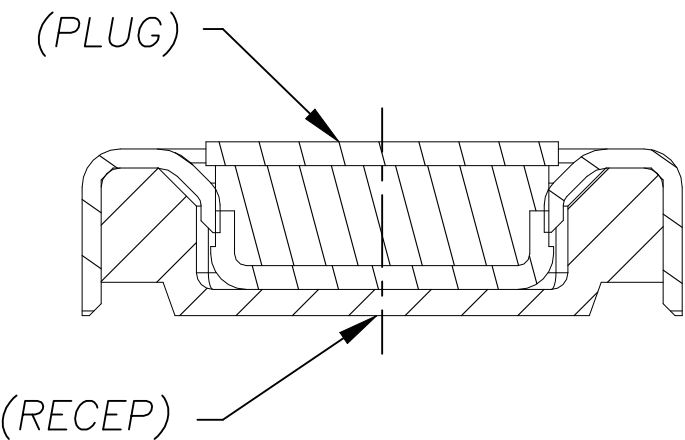
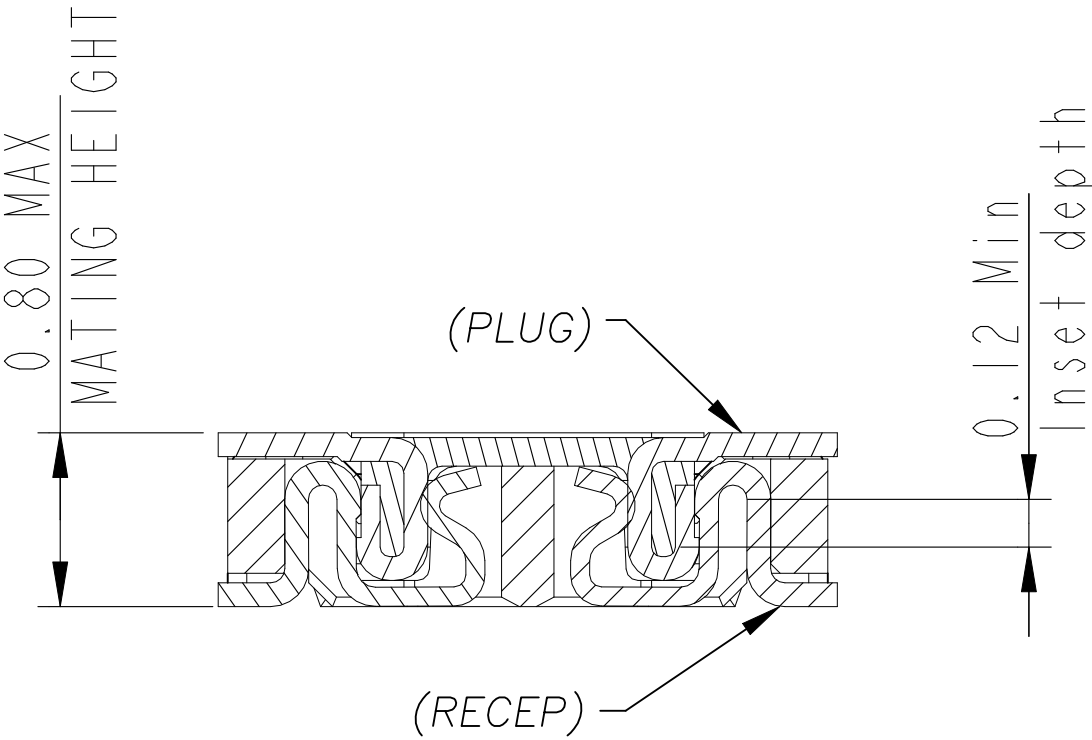
RECOMMEND PCB LAYOUT


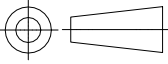


RECOMMEND ELECTRICAL CIRCUIT LAYOUT
COPPER FOIL THINCKNESS 1oz
CAN USE MORE THICKNESS SAME
OR BETTER CONDITION LAYOUT



RECOMMEND METAL MASK DIMENSIONS
METAL MASK THICKNESS:80um



THIS DRAWING IS A CONTROLLED DOCUMENT.		DWN	05FEB2021	 TE Connectivity Ltd.	
		CHK	-		
DIMENSIONS:		APVD	-	NAME	
mm		PRODUCT SPEC	-		
		APPLICATION SPEC	-	FINE PITCH BTB 8 POS REC	
		WEIGHT	-	-	
MATERIAL		CUSTOMER DRAWING	SCALE	8:1	RESTRICTED TO
FINISH		SIZE	A2	CAGE CODE	REV
		DRAWING NO	00779	2386586	A
		SHEET	2	OF	3

REVISIONS					
P	LTR	DESCRIPTION	DATE	DWN	APVD
—	—	SEE SHEET 1	—	—	—

D

C

B

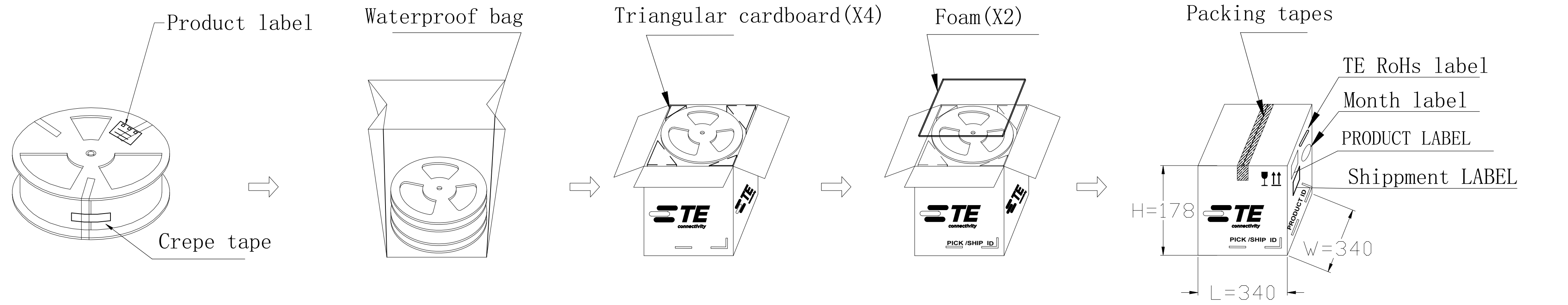
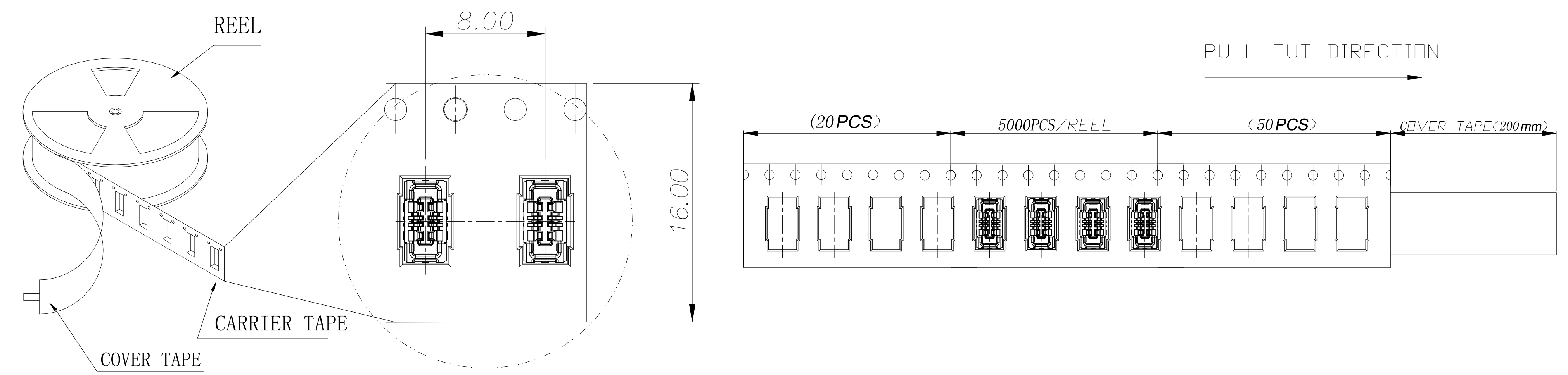
A

D

C

B

A



5000	7	35000
PCS/REEL	REEL/BOX	PCS/BOX
(PACKING CAPACITY)		

THIS DRAWING IS A CONTROLLED DOCUMENT.		DWN	05FEB2021	TE Connectivity Ltd.	
		CHK	—		
DIMENSIONS: mm		APVD	—	NAME FINE PITCH BTB 8 POS REC	
		PRODUCT SPEC	—		
		APPLICATION SPEC	—	SIZE A2	
		MATERIAL	—		
TOLERANCES, UNLESS OTHERWISE SPECIFIED: 0 PLC ± 0.4 1 PLC ± 0.25 2 PLC ± 0.15 3 PLC ± 0.1 4 PLC ± 0.1 ANGLES ± 3 FINISH		WEIGHT	—	CAGE CODE 00779	
		CUSTOMER DRAWING	—		
		SCALE	8:1	DRAWING NO C=2386586	
		SHEET	3 of 3		
		REV	A	RESTRICTED TO	

Mouser Electronics

Authorized Distributor

Click to View Pricing, Inventory, Delivery & Lifecycle Information:

[TE Connectivity:](#)

[2386586-1](#)