

D

C

B

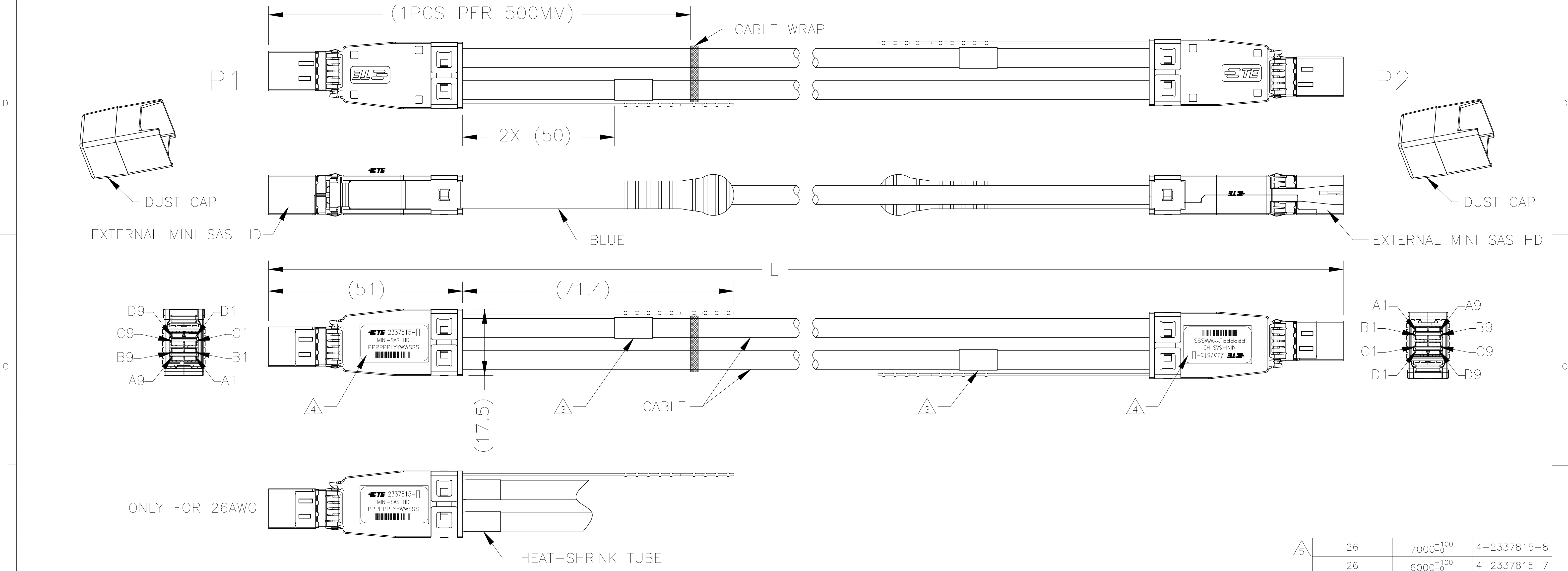
A

D

C

B

A



1. ASSEMBLY TESTED FOR CONTINUITY, OPENS, SHORTS, EEPROM PROGRAM AND SIGNAL INTEGRITY.
2. ROHS AND REACH COMPLIANCE: PRODUCT AND PROCESSING MUST MEET REQUIREMENTS OF TE SPECIFICATION TEC-138-702.

3 LABEL INFORMATION:

____ METERS

MADE IN _____

← LENGTH

← COUNTRY OF ORIGIN

4 LABEL INFORMATION:

TE 2337815-[]

MINI-SAS HD

PPPPPLYWWSSS



← TE LOGO AND P/N

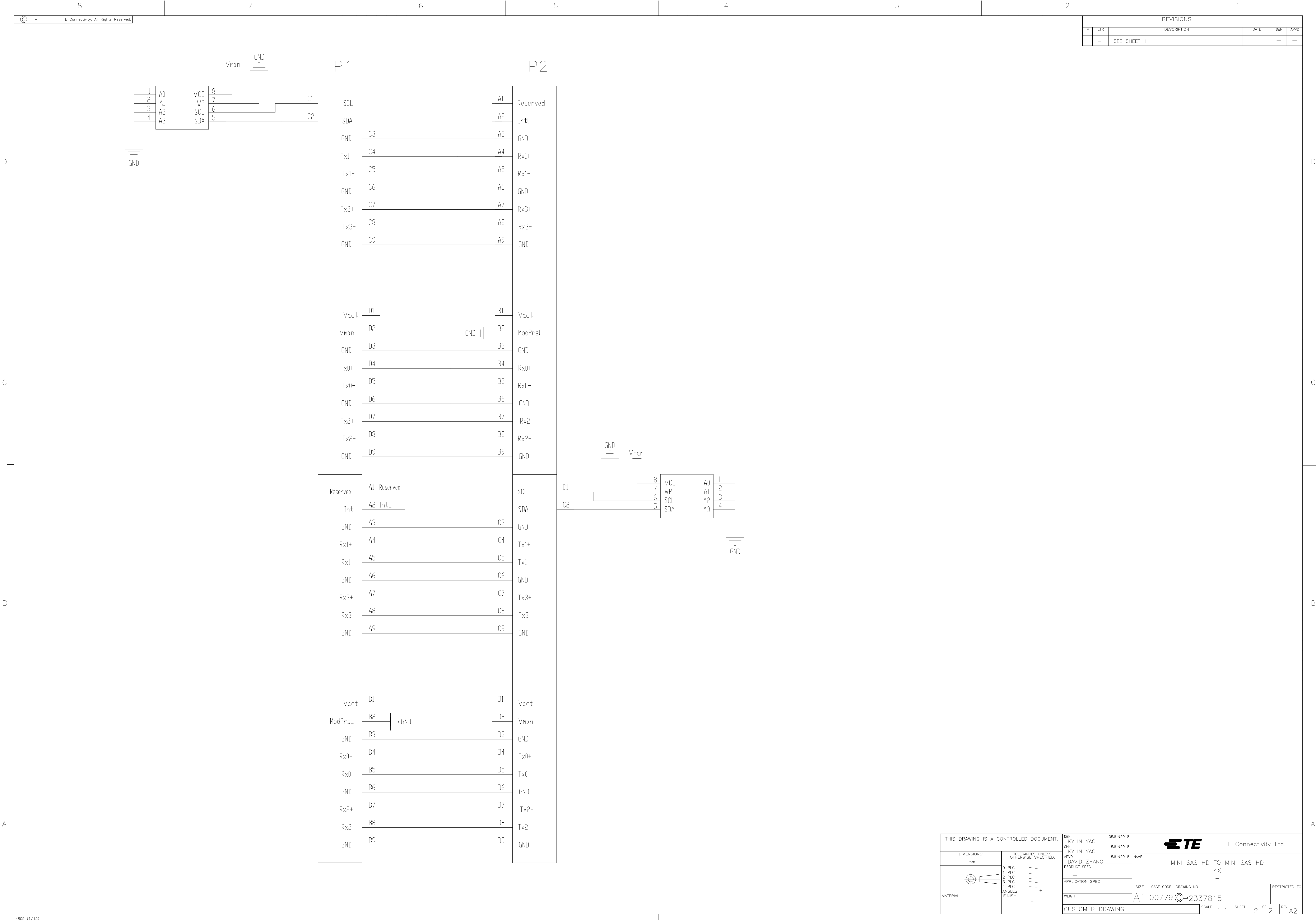
← PN, MANUFACTURING LOCATION AND DATE CODE SERIAL NUMBER

← BARCODE

5 4-2337815-8 CAN NOT MEET SI SPECIFICATION OF SAS3.0.

5	26	7000 ⁺¹⁰⁰ ₋₀	4-2337815-8
	26	6000 ⁺¹⁰⁰ ₋₀	4-2337815-7
	26	5000 ⁺¹⁰⁰ ₋₀	4-2337815-6
	26	4000 ⁺⁸⁰ ₋₀	4-2337815-5
	26	3000 ⁺⁸⁰ ₋₀	4-2337815-4
	26	2000 ⁺⁸⁰ ₋₀	4-2337815-3
	26	1000 ⁺⁵⁰ ₋₀	4-2337815-2
	26	500 ⁺⁵⁰ ₋₀	4-2337815-1
	28	3500 ⁺⁸⁰ ₋₀	2-2337815-7
	28	5000 ⁺¹⁰⁰ ₋₀	2-2337815-6
	28	4000 ⁺⁸⁰ ₋₀	2-2337815-5
	28	3000 ⁺⁸⁰ ₋₀	2-2337815-4
	28	2000 ⁺⁸⁰ ₋₀	2-2337815-3
	28	1000 ⁺⁵⁰ ₋₀	2-2337815-2
	28	500 ⁺⁵⁰ ₋₀	2-2337815-1
	30	3000 ⁺⁸⁰ ₋₀	2337815-4
	30	2000 ⁺⁸⁰ ₋₀	2337815-3
	30	1000 ⁺⁵⁰ ₋₀	2337815-2
	30	500 ⁺⁵⁰ ₋₀	2337815-1
	AWG	L	PART NO.

THIS DRAWING IS A CONTROLLED DOCUMENT.		DWN KYLIN YAO 05JUN2018	 TE Connectivity Ltd.		
		CHK KYLIN YAO 05JUN2018			
DIMENSIONS: mm 	TOLERANCES UNLESS OTHERWISE SPECIFIED:		NAME	MINI SAS HD TO MINI SAS HD	
	DAVID ZHANG 05JUN2018		PRODUCT SPEC	4X	
	0 PLC ± -		APPLICATION SPEC	-	
	1 PLC ± -		SIZE	CAGE CODE	DRAWING NO
	2 PLC ± -		A1 00779 C=2337815		
	3 PLC ± -		RESTRICTED TO		
	4 PLC ± -		-		
MATERIAL	FINISH	WEIGHT	SCALE		
-	-	0	1:1		
CUSTOMER DRAWING		SHEET		REV	
		1 OF 2		A2	



Mouser Electronics

Authorized Distributor

Click to View Pricing, Inventory, Delivery & Lifecycle Information:

[TE Connectivity:](#)

[4-2337815-7](#)