

D

C

B

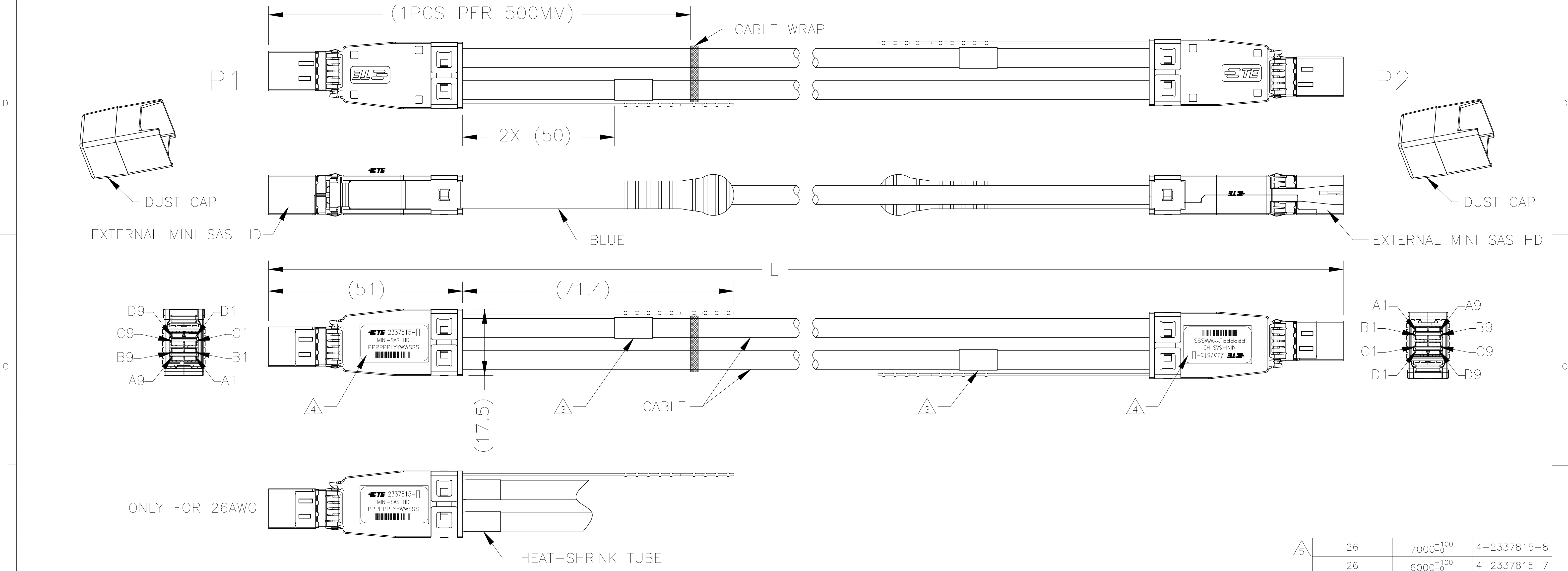
A

D

C

B

A



1. ASSEMBLY TESTED FOR CONTINUITY, OPENS, SHORTS, EEPROM PROGRAM AND SIGNAL INTEGRITY.
2. ROHS AND REACH COMPLIANCE: PRODUCT AND PROCESSING MUST MEET REQUIREMENTS OF TE SPECIFICATION TEC-138-702.

△3 LABEL INFORMATION:

\_\_\_ METERS

MADE IN \_\_\_\_\_

LENGTH

COUNTRY OF ORIGIN

△4 LABEL INFORMATION:

TE LOGO AND P/N

PN, MANUFACTURING LOCATION AND DATE CODE SERIAL NUMBER

TE 2337815-[ ]

MINI-SAS HD

PPPPPLYWWSSS

TE

BARCODE

△5 4-2337815-8 CAN NOT MEET SI SPECIFICATION OF SAS3.0.

△5	26	7000 <sup>+100</sup> <sub>-0</sub>	4-2337815-8
	26	6000 <sup>+100</sup> <sub>-0</sub>	4-2337815-7
	26	5000 <sup>+100</sup> <sub>-0</sub>	4-2337815-6
	26	4000 <sup>+80</sup> <sub>-0</sub>	4-2337815-5
	26	3000 <sup>+80</sup> <sub>-0</sub>	4-2337815-4
	26	2000 <sup>+80</sup> <sub>-0</sub>	4-2337815-3
	26	1000 <sup>+50</sup> <sub>-0</sub>	4-2337815-2
	26	500 <sup>+50</sup> <sub>-0</sub>	4-2337815-1
	28	3500 <sup>+80</sup> <sub>-0</sub>	2-2337815-7
	28	5000 <sup>+100</sup> <sub>-0</sub>	2-2337815-6
	28	4000 <sup>+80</sup> <sub>-0</sub>	2-2337815-5
	28	3000 <sup>+80</sup> <sub>-0</sub>	2-2337815-4
	28	2000 <sup>+80</sup> <sub>-0</sub>	2-2337815-3
	28	1000 <sup>+50</sup> <sub>-0</sub>	2-2337815-2
	28	500 <sup>+50</sup> <sub>-0</sub>	2-2337815-1
	30	3000 <sup>+80</sup> <sub>-0</sub>	2337815-4
	30	2000 <sup>+80</sup> <sub>-0</sub>	2337815-3
	30	1000 <sup>+50</sup> <sub>-0</sub>	2337815-2
	30	500 <sup>+50</sup> <sub>-0</sub>	2337815-1
	AWG	L	PART NO.

THIS DRAWING IS A CONTROLLED DOCUMENT.

DWN  
KYLIN YAO  
05JUN2018

CHK  
KYLIN YAO  
05JUN2018

APVD  
DAVID ZHANG  
05JUN2018

NAME  
MINI SAS HD TO MINI SAS HD  
4X

PRODUCT SPEC  
APPLICATION SPEC

SIZE  
A1

CAGE CODE  
00779

DRAWING NO  
2337815

RESTRICTED TO  
—

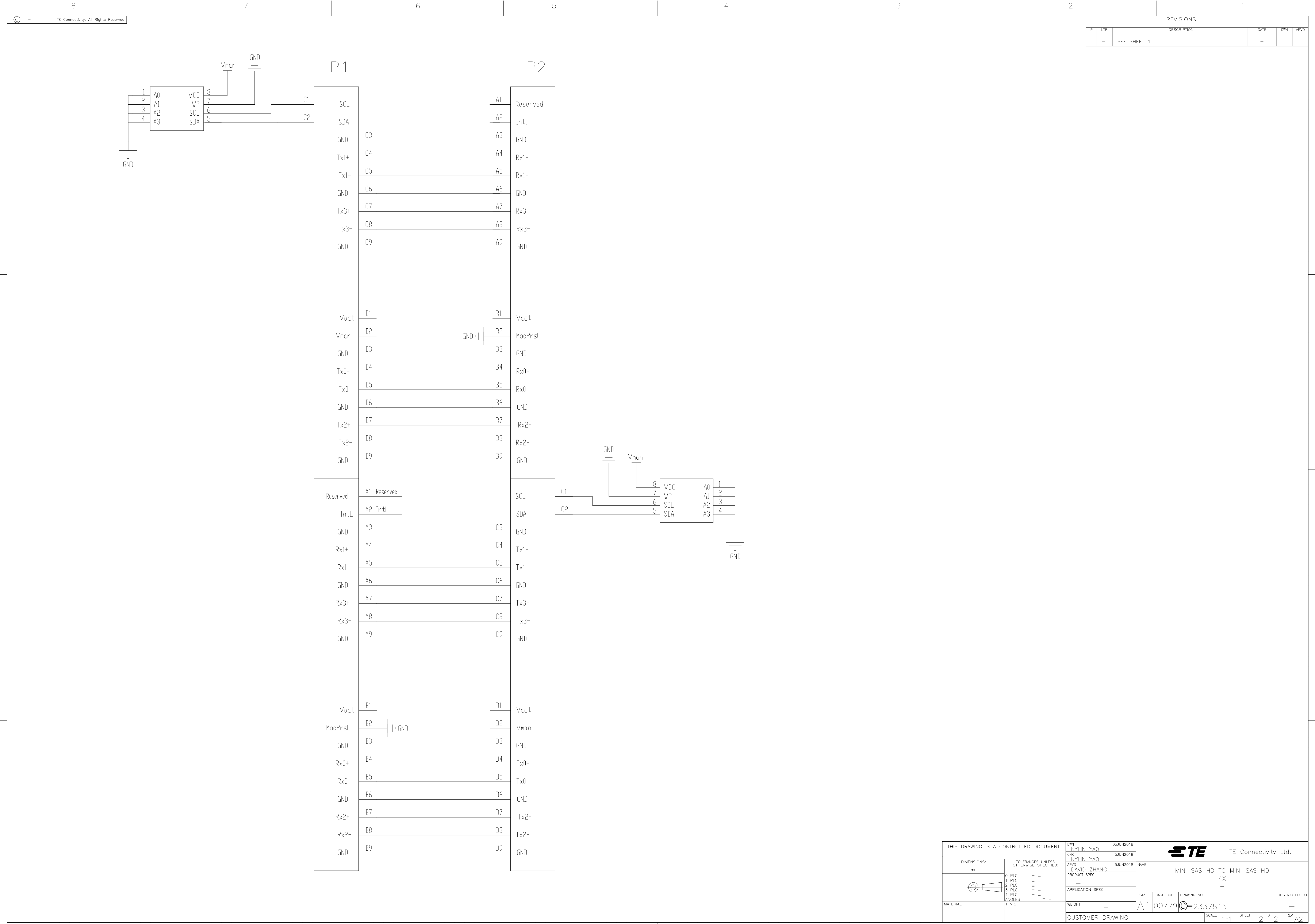
TE Connectivity Ltd.

CUSTOMER DRAWING

SCALE  
1:1

SHEET  
1 OF 2

REV  
A2



# Mouser Electronics

Authorized Distributor

Click to View Pricing, Inventory, Delivery & Lifecycle Information:

[TE Connectivity:](#)

[2337815-2](#)