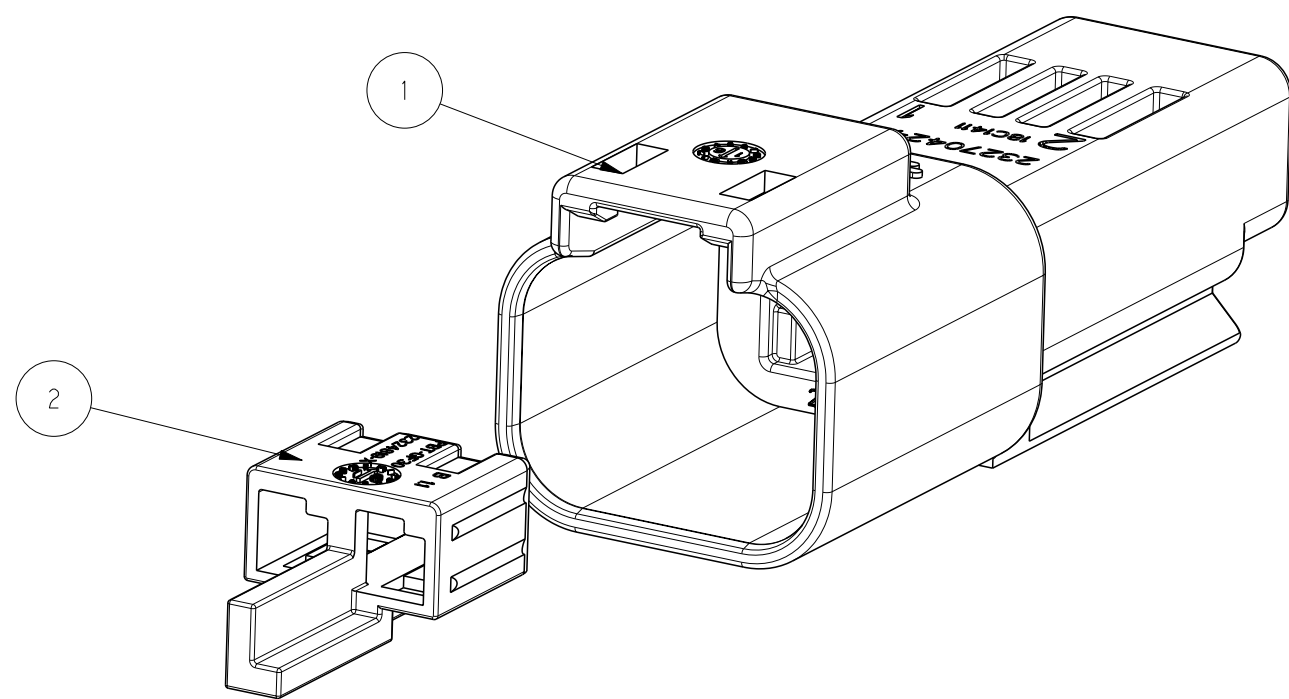
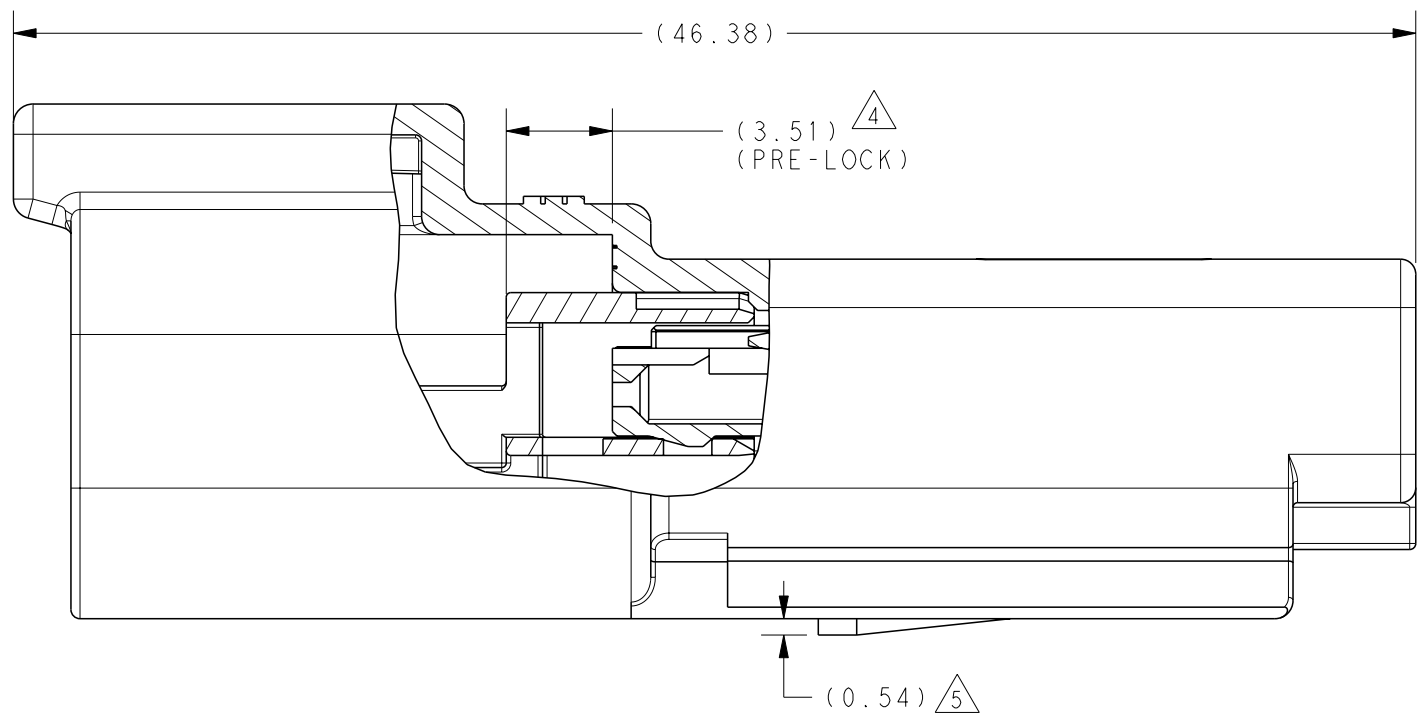
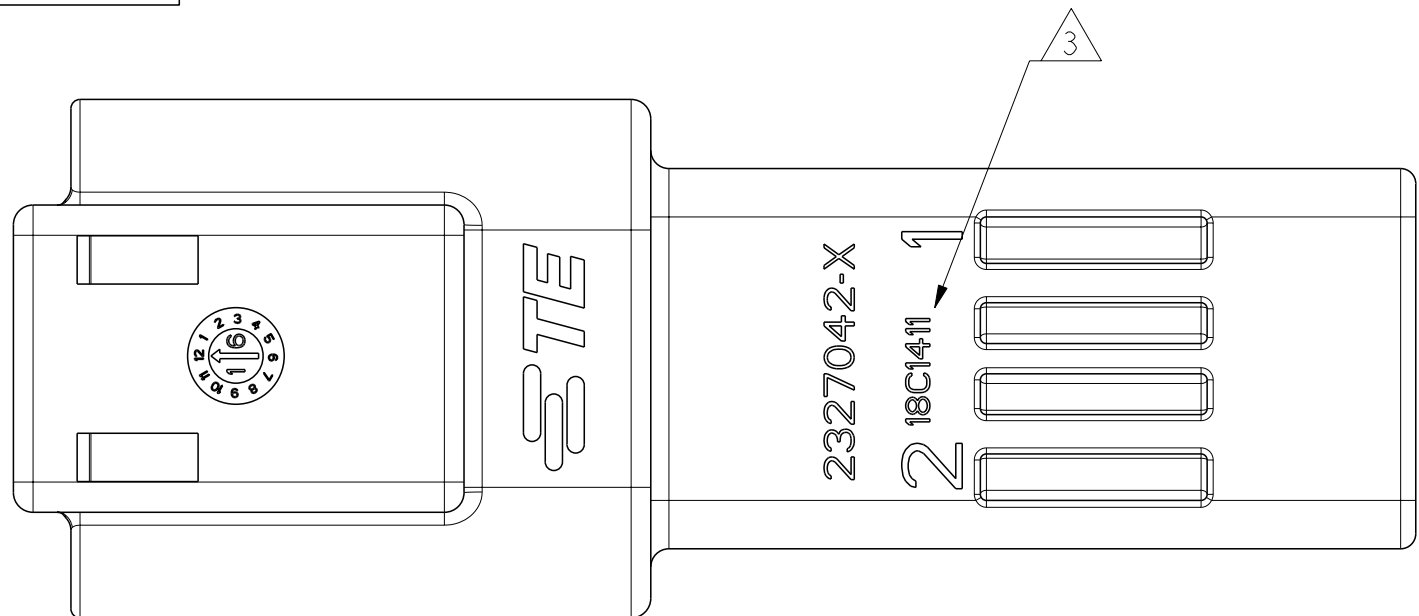
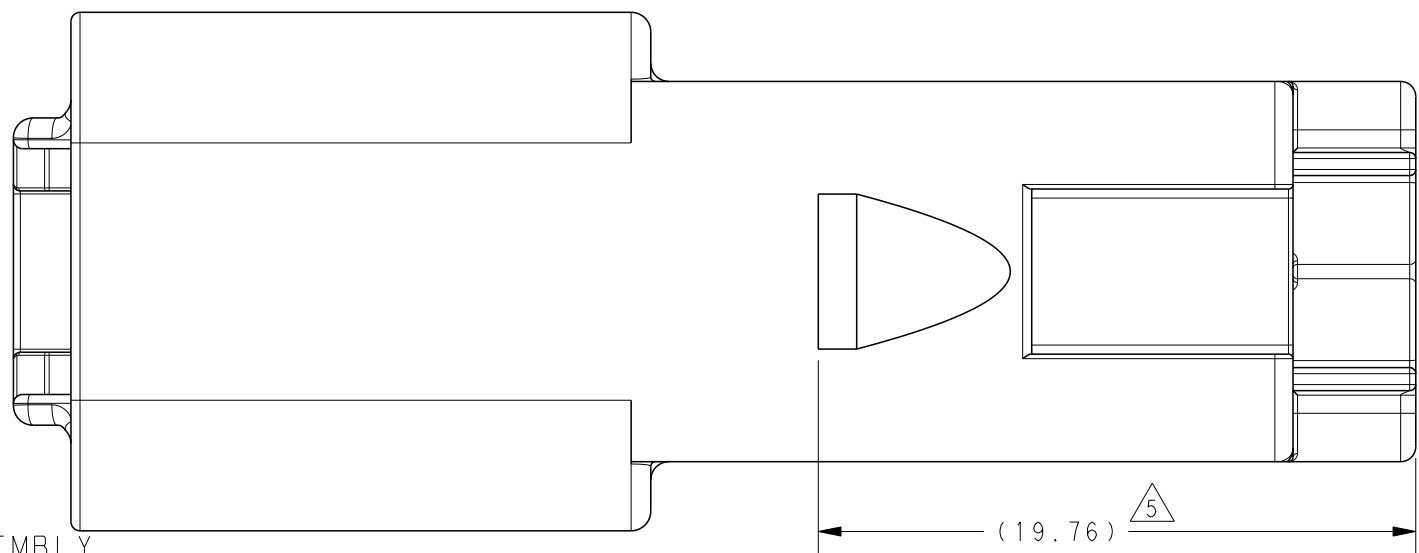
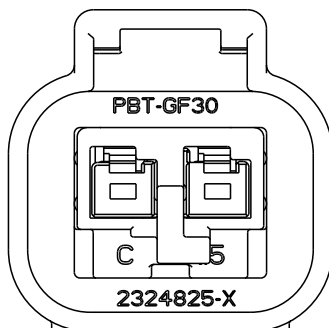
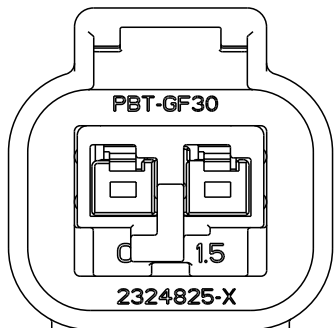
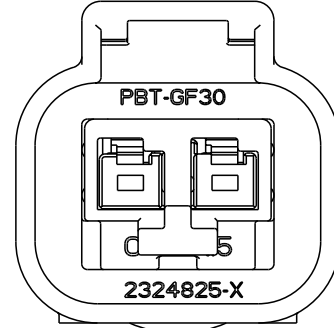


| REVISIONS | | | | | |
|-----------|-----|---------------|-----------|------|------|
| P | LTR | DESCRIPTION | DATE | DWN | APVD |
| | A2 | ECR-19-007522 | 13MAY2019 | V. T | E. J |
| | A3 | ECR-20-004141 | 18MAR2020 | V. T | E. J |
| | B | ECR-20-007431 | 15JUN2020 | V. T | E. J |
| | C | ECR-20-015257 | 01JUN2021 | V. T | Z. Z |





| | | | | | | |
|-----------------|---------------------|-----------------------------|--------------------|-------------------------|----------|-------------------|
| 2141114-1 | TIN | GENERAL (USCAR-2 V2) | 0.35 | Ø1.10~Ø1.40 | 963142-2 | 963143-1 |
| 2141114-3 | SILVER | HIGH VIBRATION (USCAR-2 V3) | | | | |
| 2141116-1 | TIN | GENERAL (USCAR-2 V2) | 0.5~0.75 | Ø1.40~Ø1.90 | 963142-1 | 963143-1 |
| 2141116-3 | SILVER | HIGH VIBRATION (USCAR-2 V3) | | | | |
| 2177610-1 | TIN | GENERAL (USCAR-2 V2) | 1.0~1.5 | Ø1.90~Ø2.40 | 963142-1 | 963143-1 |
| 2177610-3 | SILVER | HIGH VIBRATION (USCAR-2 V3) | | | | |
| TERMINAL P/N | TERMINAL PLATING | APPLICATION | WIRE SIZE (MM2) | INSULATION WIRES(MM) | SWS P/N | BLIND PLUG P/N |



| | | | | | | | | |
|---|----------------|----------------|---|----------|-------------|---|--|--|
|  | | |  | | |  | | |
| CODING A PN: 2327042-1 (V0) 2-2327042-1 (HB) | | | CODING B PN: 2327042-2 (V0) 2-2327042-2 (HB) | | | CODING C PN: 2327042-3 (V0) 2-2327042-3 (HB) | | |
| 1 | | | NATURAL | PBT-GF30 | TPA, CODE C | 2 | | |
| | 1 | | GREEN | PBT-GF30 | TPA, CODE B | | | |
| | | 1 | YELLOW | PBT-GF30 | TPA, CODE A | | | |
| | | | GRAY | PBT-GF30 | HOUSING | 1 | | |
| 1 | 1 | 1 | BLACK | PBT-GF30 | | | | |
| ER ASSY | | | COLOR | MATERIAL | DESCRIPTION | ITEM NO | | |
| 6.3 | 6.3 | 6.3 | WEIGHT OF EACH ASSY NO. (g) | | | | | |
| C | C | C | REVISION OF EACH ASSY NO. | | | | | |
| 2327042-3 (V0) | 2327042-2 (V0) | 2327042-1 (V0) | TE ASSEMBLY PN | | | | | |

| | | | | | | | | | |
|-----------------------|---------------------|---------------------|-------------------|-------------------|-------------------|-----------------------------|----------|-------------|---------|
| 1 | | | 1 | | | NATURAL | PBT-GF30 | TPA, CODE C | 2 |
| | 1 | | | 1 | | GREEN | PBT-GF30 | TPA, CODE B | |
| | | 1 | | | 1 | YELLOW | PBT-GF30 | TPA, CODE A | |
| 1 | 1 | 1 | | | | GRAY | PBT-GF30 | HOUSING | 1 |
| | | | 1 | 1 | 1 | BLACK | PBT-GF30 | | |
| QTY. REQUEST PER ASSY | | | | | | COLOR | MATERIAL | DESCRIPTION | ITEM NO |
| 5.7 | 5.7 | 5.7 | 6.3 | 6.3 | 6.3 | WEIGHT OF EACH ASSY NO. (g) | | | |
| C | C | C | C | C | C | REVISION OF EACH ASSY NO. | | | |
| 2-2327042-3 (HB) | 2-2327042-2 (HB) | 2-2327042-1 (HB) | 2327042-3 (VO) | 2327042-2 (VO) | 2327042-1 (VO) | TE ASSEMBLY PN | | | |

| | | | | | |
|---|--|---|--|---|--|
| THIS DRAWING IS A CONTROLLED DOCUMENT. | | DWN 17JAN2018 C. WAN CHK 26FEB2018 E. JIANG APVD 02MAR2018 L. YIN | |  TE Connectivity | |
| DIMENSIONS: mm | | TOLERANCES UNLESS OTHERWISE SPECIFIED: | | NAME SUPERSEAL PRO 2POS, RECP. ASSEMBLY MCON1.2, CB TERMINAL | |
|  | | 0 PLC ±. 1 PLC ±0.25 2 PLC ±0.15 3 PLC ±. 4 PLC ±. ANGLES ±. FINISH | | PRODUCT SPEC 108-32189 APPLICATION SPEC 114-32258 | |
| MATERIAL - - | | WEIGHT - | | SIZE A2 | |
| | | | | CAGE CODE 00779 | |
| | | | | DRAWING NO C-2327042 | |
| | | | | RESTRICTED TO | |
| | | CUSTOMER DRAWING | | SCALE 2:1 | |
| | | | | SHEET 1 of 1 | |
| | | | | REV C | |

Mouser Electronics

Authorized Distributor

Click to View Pricing, Inventory, Delivery & Lifecycle Information:

[TE Connectivity:](#)

[2327042-1](#)