

THIS DRAWING IS UNPUBLISHED.

RELEASED FOR PUBLICATION

© COPYRIGHT - By -

ALL RIGHTS RESERVED.

REVISIONS

P	LTR	DESCRIPTION	DATE	DWN	APVD
	A1	ECO-21-006709	18JUN2021	RK	SS

SINGLE POLE SWITCH

ACTUATOR

Ø28.00
[1.10]

RING ILLUMINATED

Ø15.70
[.62]

Ø19.80
[.78]

PANEL CUTOUT

MAX.PANEL THICKNESS: 10.0[.39]

Ø25.20
[.99]

POSITION 1

POSITION 2

M25X1.0

Ø22.5
[.89]

28
[1.10]

O-RING

HEX NUT

EXPLODED VIEW

2.0
[.08]

35.2
[1.39]

27.4
[1.08]

2.75
[.11]

0.50
[.02]

13.00
[.51]

3

2

1

(+)

(-)

POSITION 1

POSITION 2

ASSEMBLED VIEW

SPECIFICATION:

CONTACT RATING: SILVER; 3A @ 250VAC RESISTIVE
GOLD; 0.4A @ 20VDC OR PEAK AC

INSULATION RESISTANCE: 1,000MΩ MIN AT 500VDC

DIELECTRIC STRENGTH: 2,000V RMS @ SEA LEVEL

CONTACT RESISTANCE: 50mΩ MAX @ 1A 12VDC (INITIAL VALUE),
100mΩ MAX @ 1A 12VDC(INITIAL VALUES),
FLYING LEADS.

ELECTRICAL LIFE CYCLES: 50,000 MAKE AND BREAK CYCLES
AT FULL LOAD.

ACTUATION FORCE: SP: 2.5±1 N, DP: 3.5±1 N

ACTUATION TRAVEL: APPROXIMATELY 3.2mm

SEALED PER IP67, IK08

OPERATING TEMPERATURE: -20°C TO +55°C

MECHANICAL LIFECYCLES: MOMENTARY; 1,000,000 CYCLES
LOCKING; 500,000 CYCLES

HARDWARE TORQUE: 5-14 N-m.

MATERIALS

BUSHING: STAINLESS STEEL,
BASE: PBT (UL 94-V0), PC (UL 94-V2),
ACTUATOR: STAINLESS STEEL, PC
O-RING: SILICONE,
TERMINAL/CONTACT: COPPER BASE, SILVER/GOLD PLATED,
HEX NUT: BRASS BASE, NICKEL PLATED.
INNER ASSEMBLY: POM/PA66
SPRING: SPRING STEEL
SEALING: SILICONE

1. ALL MATERIAL AND FINISHES SHALL COMPLY WITH EU DIRECTIVE
2002/95/EC OF 27JAN2003(ROHS).

THIS DRAWING IS A CONTROLLED DOCUMENT.

DIMENSIONS:
mm [INCHES]

0 PLC ± -

1 PLC ± 0.4[.016]

2 PLC ± 0.25[.010]

3 PLC ± -

4 PLC ± -

ANGLES ± 2°

FINISH -

DWN 15MAR2017
SHIVAKUMAR S S

CHK 15MAR2017
SANJAY SHINDIKAR

APVD 15MAR2017
SANJAY SHINDIKAR

PRODUCT SPEC

APPLICATION SPEC

WEIGHT -

CUSTOMER DRAWING

NAME

SIZE A2

CAGE CODE 00779

DRAWING NO C-2317656

RESTRICTED TO -

SCALE 1:1

SHEET 1 OF 3

REV A1

TE Connectivity

ANTI-VANDAL SWITCH 25mm,
SOLDER TERMINALS, MOVING RING LED

1471-9 (1/15)

DOUBLE POLE SWITCH

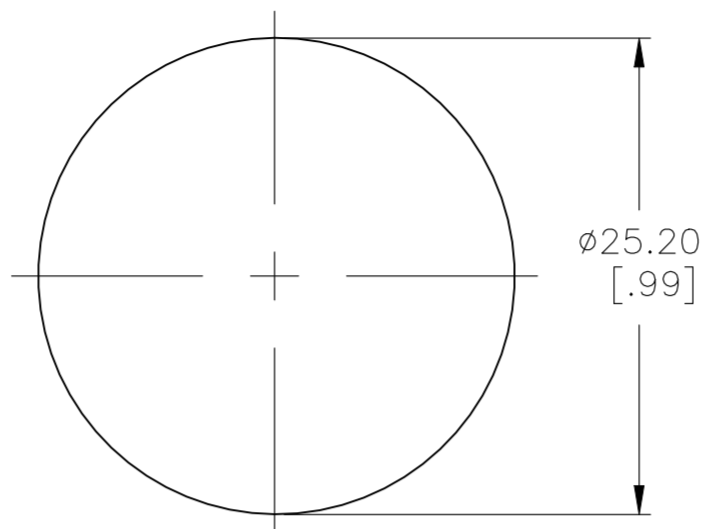
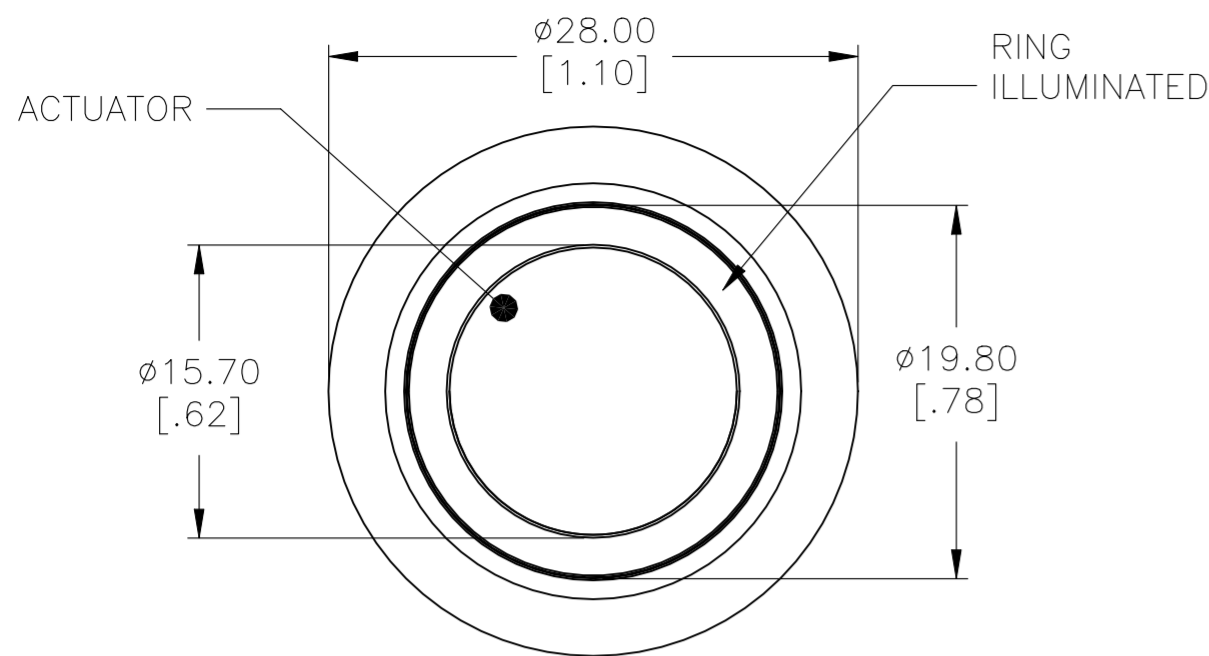
REVISIONS					
P	LTR	DESCRIPTION	DATE	DWN	APVD
-	-	SEE SHEET 1	-	-	-

D

C

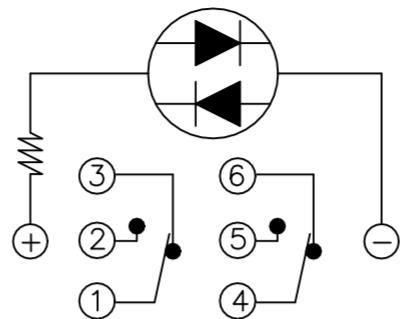
B

A

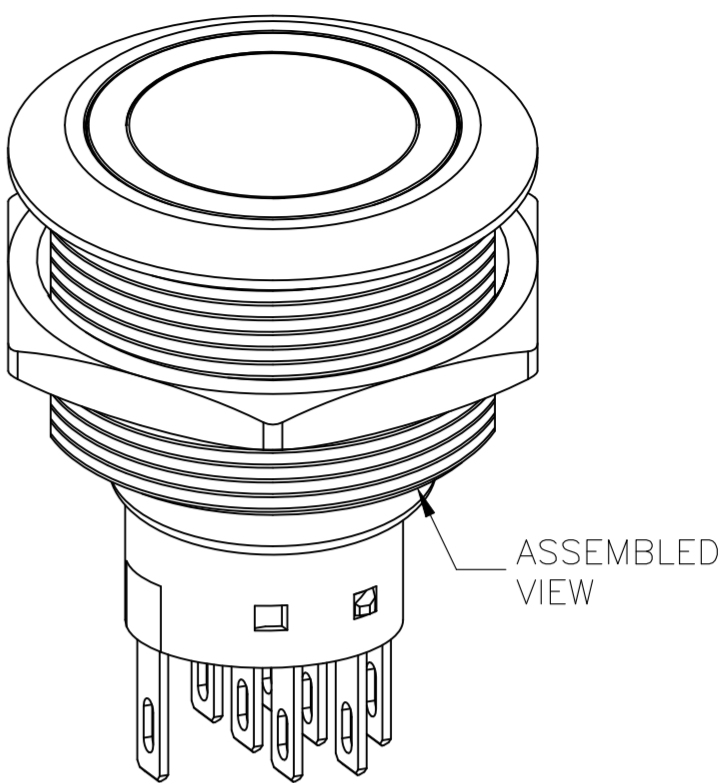
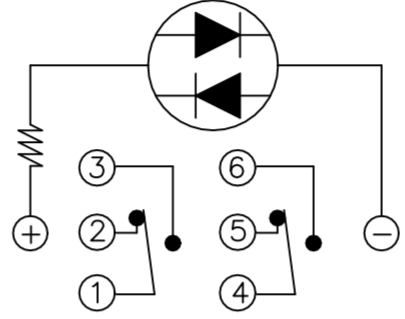


PANEL CUTOUT
MAX.PANEL THICKNESS: 10.0[.39]

POSITION 1



POSITION 2

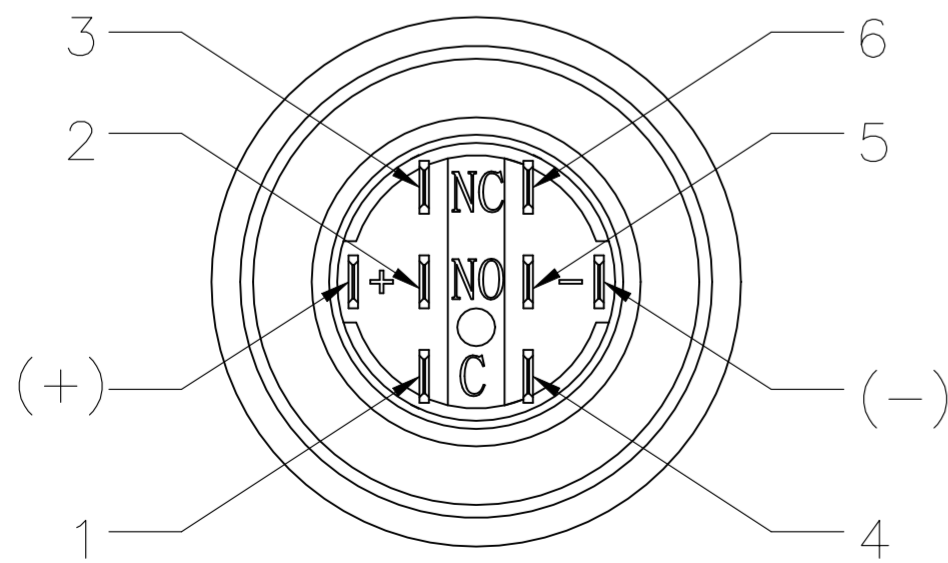
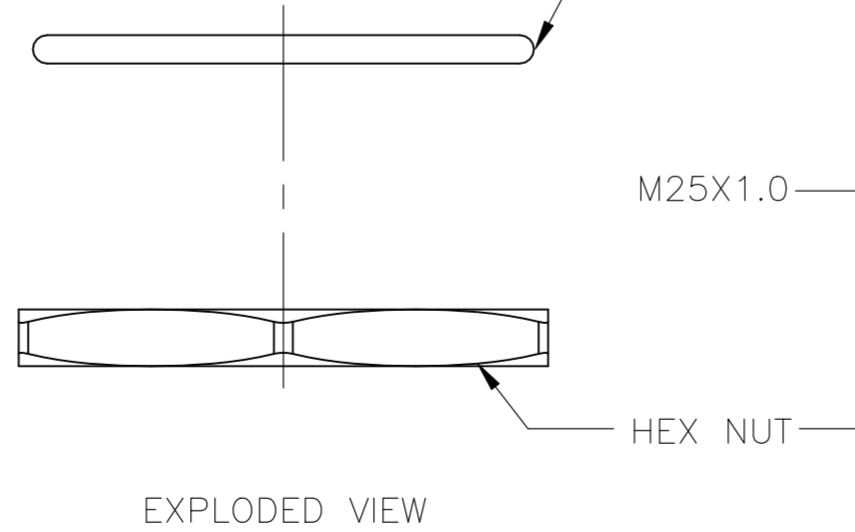
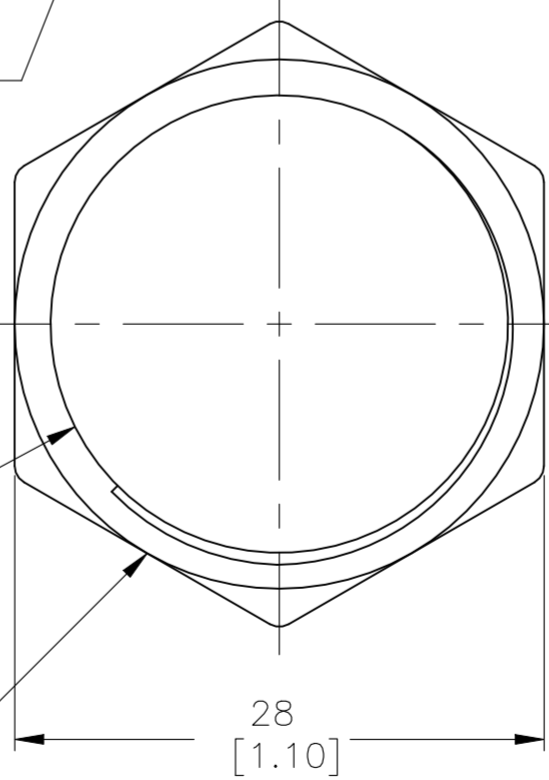
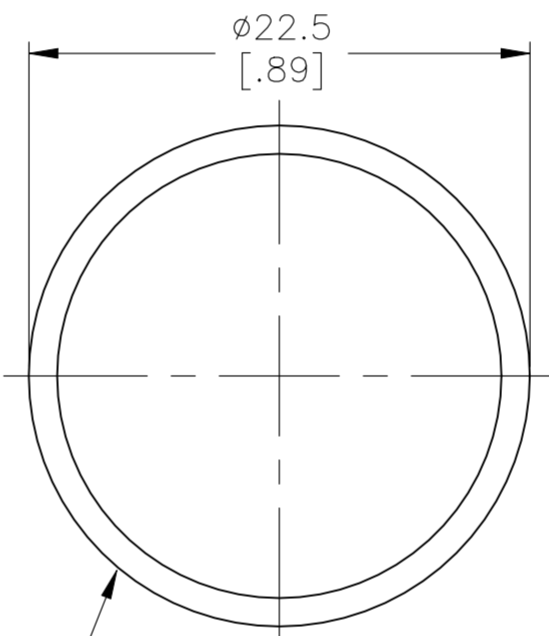
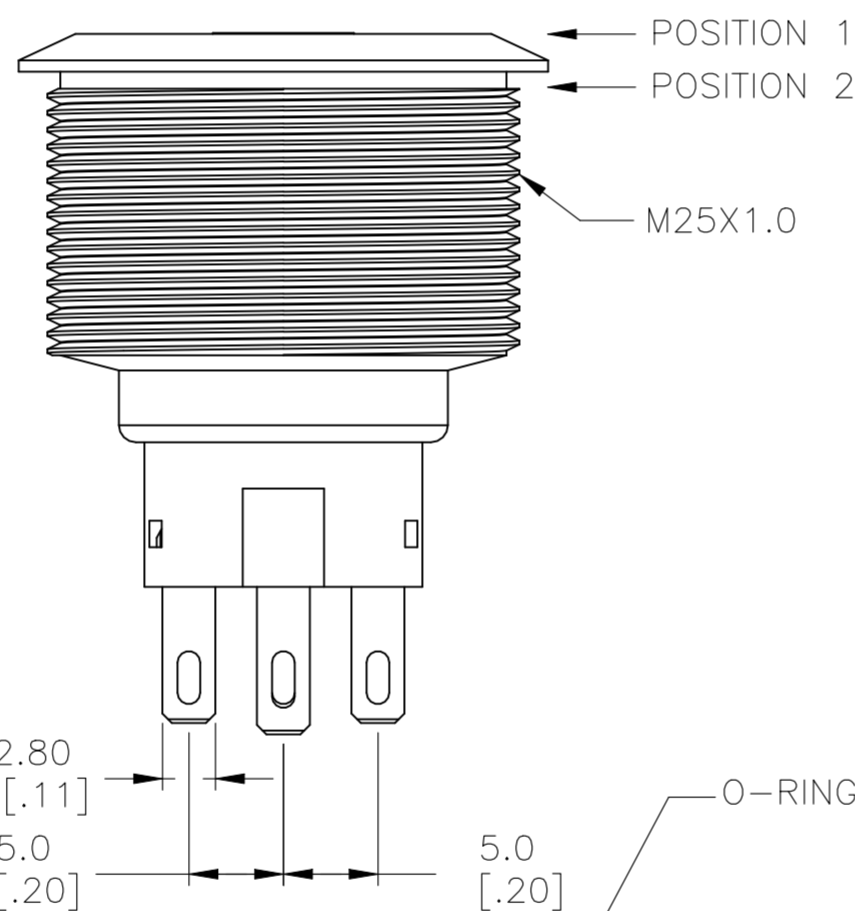
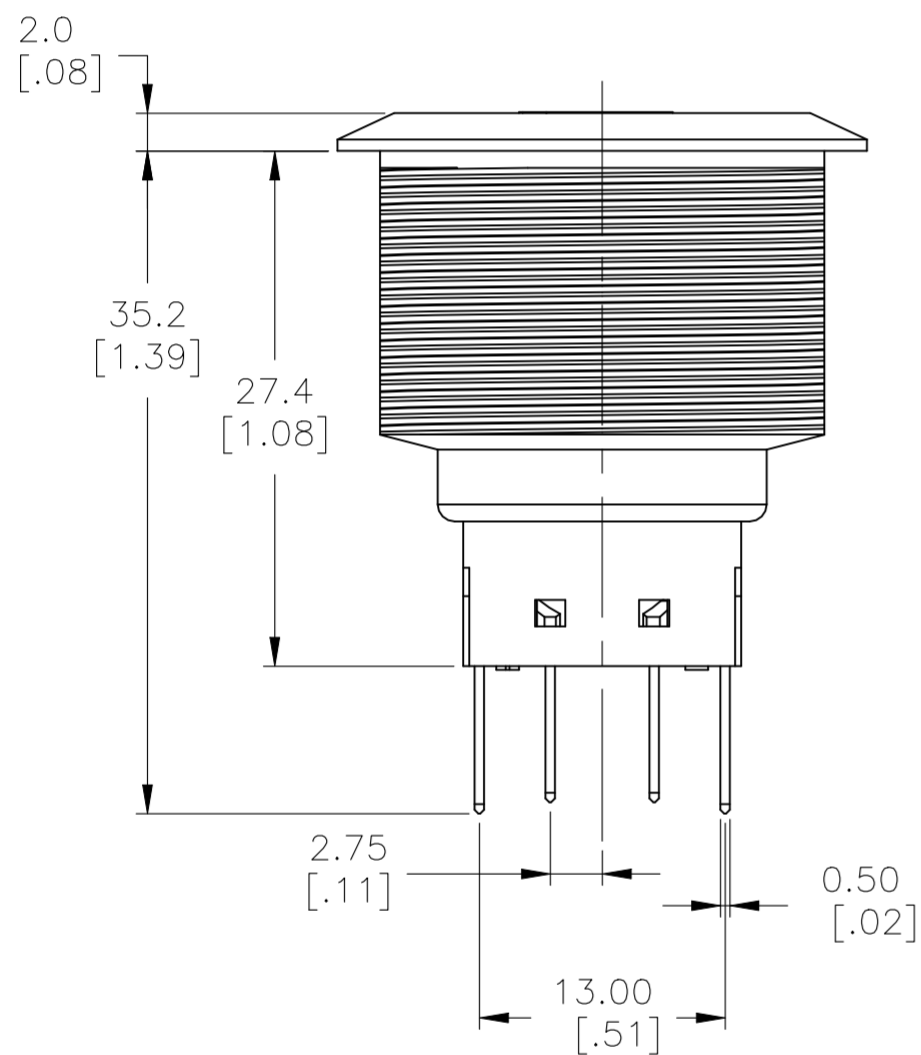


D

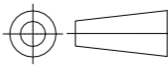
C

B

A



THIS DRAWING IS A CONTROLLED DOCUMENT.		DWN 15MAR2017 SHIVAKUMAR S S	TE Connectivity		
DIMENSIONS: mm [INCHES]		CHK 15MAR2017 SANJAY SHINDIKAR			
TOLERANCES, UNLESS OTHERWISE SPECIFIED:		APVD 15MAR2017 SANJAY SHINDIKAR	NAME ANTI-VANDAL SWITCH 25mm, SOLDER TERMINALS, MOVING RING LED		
0 PLC ± -		PRODUCT SPEC			
1 PLC ± 0.4[.016]		APPLICATION SPEC	SIZE CAGE CODE DRAWING NO RESTRICTED TO		
2 PLC ± 0.25[.010]		—			
3 PLC ± -		—	A2 00779 C=2317656		
4 PLC ± -		—			
ANGLES ± 2°		—	CUSTOMER DRAWING		
FINISH		—			
MATERIAL		—	SCALE 1:1 SHEET 2 OF 3 REV A1		

4		3		2		1					
THIS DRAWING IS UNPUBLISHED.		RELEASED FOR PUBLICATION				REVISIONS					
© COPYRIGHT - By -		ALL RIGHTS RESERVED.				P	LTR	DESCRIPTION	DATE	DWN	APVD
							-	SEE SHEET 1	-	-	-
SILVER	MOVING RING	SOLDER TERMINAL	DOUBLE POLE - LOCKING	BLUE	24	AV2521E724Q04	4-2317656-0				
				BLUE	12	AV2521E712Q04	3-2317656-9				
				GREEN	24	AV2521E624Q04	3-2317656-8				
				GREEN	12	AV2521E612Q04	3-2317656-7				
				YELLOW	24	AV2521E524Q04	3-2317656-6				
				YELLOW	12	AV2521E512Q04	3-2317656-5				
				RED	24	AV2521E324Q04	3-2317656-4				
				RED	12	AV2521E312Q04	3-2317656-3				
				WHITE	24	AV2521E124Q04	3-2317656-2				
				WHITE	12	AV2521E112Q04	3-2317656-1				
				DOUBLE POLE - MOMENTARY	BLUE	24	AV2520E724Q04	3-2317656-0			
					BLUE	12	AV2520E712Q04	2-2317656-9			
					GREEN	24	AV2520E624Q04	2-2317656-8			
					GREEN	12	AV2520E612Q04	2-2317656-7			
					YELLOW	24	AV2520E524Q04	2-2317656-6			
					YELLOW	12	AV2520E512Q04	2-2317656-5			
					RED	24	AV2520E324Q04	2-2317656-4			
					RED	12	AV2520E312Q04	2-2317656-3			
					WHITE	24	AV2520E124Q04	2-2317656-2			
					WHITE	12	AV2520E112Q04	2-2317656-1			
			SINGLE POLE - LOCKING	BLUE	24	AV2511E724Q04	2-2317656-0				
				BLUE	12	AV2511E712Q04	1-2317656-9				
				GREEN	24	AV2511E624Q04	1-2317656-8				
				GREEN	12	AV2511E612Q04	1-2317656-7				
				YELLOW	24	AV2511E524Q04	1-2317656-6				
				YELLOW	12	AV2511E512Q04	1-2317656-5				
				RED	24	AV2511E324Q04	1-2317656-4				
				RED	12	AV2511E312Q04	1-2317656-3				
				WHITE	24	AV2511E124Q04	1-2317656-2				
				WHITE	12	AV2511E112Q04	1-2317656-1				
			SINGLE POLE - MOMENTARY	BLUE	24	AV2510E724Q04	1-2317656-0				
				BLUE	12	AV2510E712Q04	2317656-9				
				GREEN	24	AV2510E624Q04	2317656-8				
				GREEN	12	AV2510E612Q04	2317656-7				
				YELLOW	24	AV2510E524Q04	2317656-6				
				YELLOW	12	AV2510E512Q04	2317656-5				
				RED	24	AV2510E324Q04	2317656-4				
				RED	12	AV2510E312Q04	2317656-3				
				WHITE	24	AV2510E124Q04	2317656-2				
				WHITE	12	AV2510E112Q04	2317656-1				
CONTACT FINISH	LIGHT TYPE	TERMINAL OPTION	POLE/THROW	LED COLOR	LED VOLTAGE	TE DESCRIPTIVE PART NUMBER	TE PART NUMBER				
				THIS DRAWING IS A CONTROLLED DOCUMENT.		DWN 15MAR2017 SHIVAKUMAR S S		CHK 15MAR2017 SANJAY SHINDIKAR		APVD 15MAR2017 SANJAY SHINDIKAR	
DIMENSIONS: mm [INCHES]		TOLERANCES UNLESS OTHERWISE SPECIFIED:		PRODUCT SPEC		NAME		SIZE		CAGE CODE	
		0 PLC ± - 1 PLC ± 0.4[.016] 2 PLC ± 0.25[.010] 3 PLC ± - 4 PLC ± - ANGLES ± 2°		APPLICATION SPEC		DRAWING NO		RESTRICTED TO		SCALE	
MATERIAL -		FINISH -		WEIGHT 0		A2 00779		C=2317656		REV A1	
				CUSTOMER DRAWING		SCALE 1:1		SHEET 3 OF 3		REV A1	

Mouser Electronics

Authorized Distributor

Click to View Pricing, Inventory, Delivery & Lifecycle Information:

[TE Connectivity:](#)

[2-2317656-4](#)