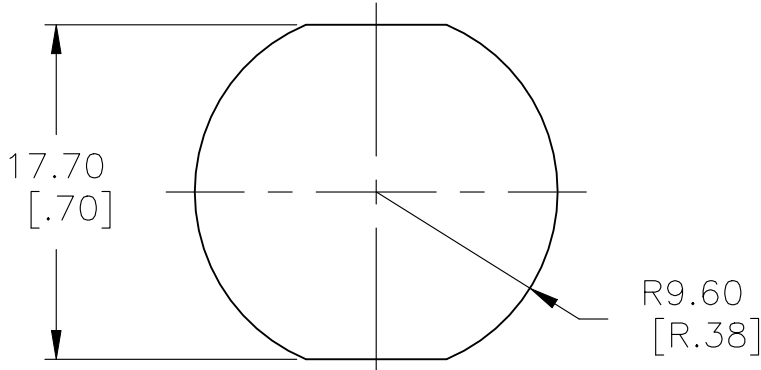
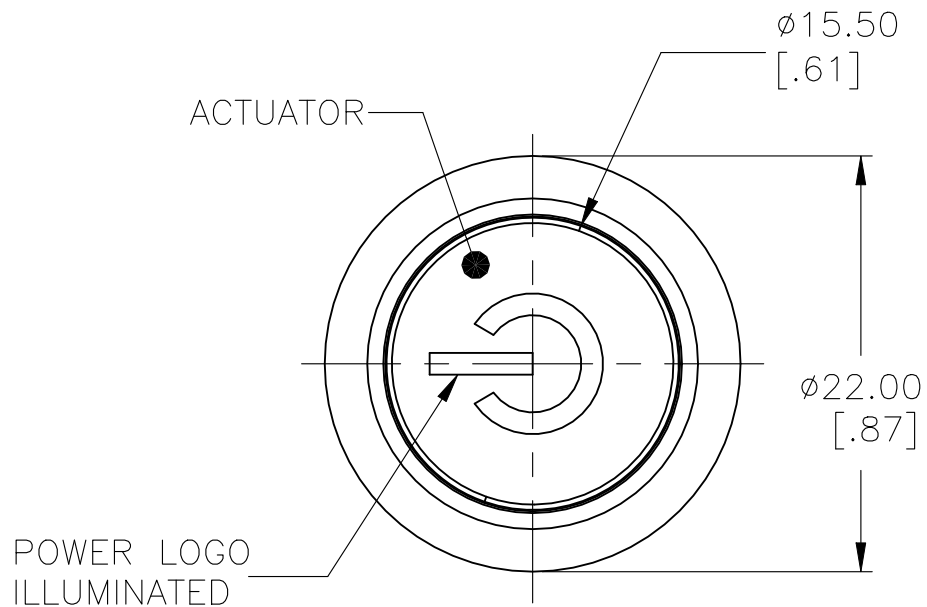
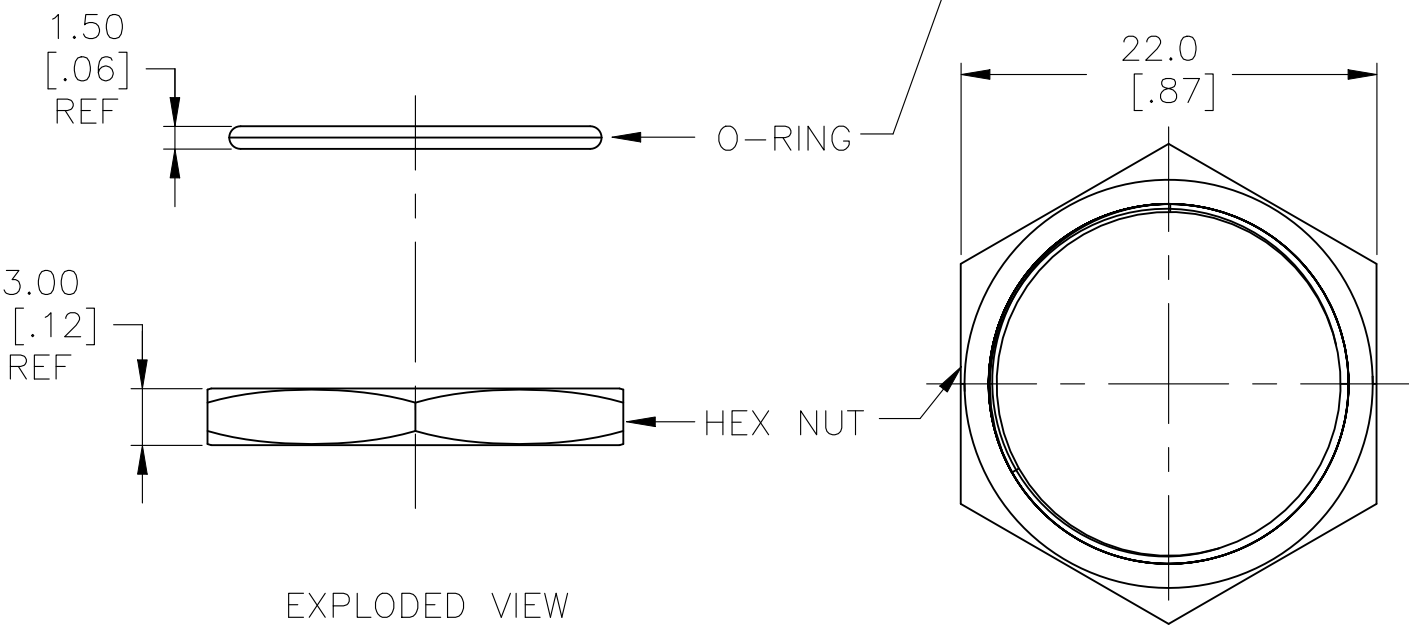
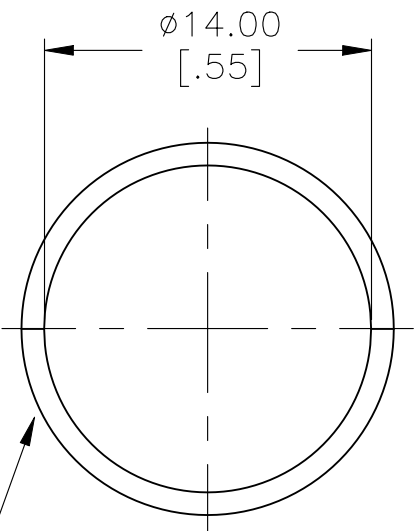
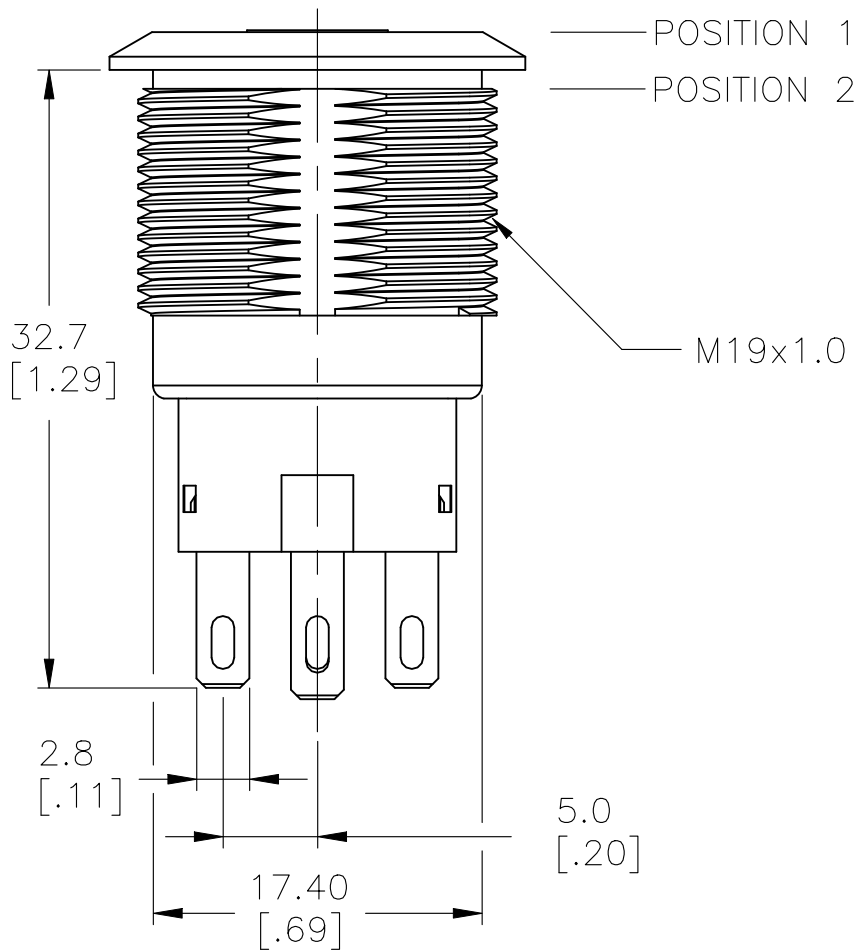
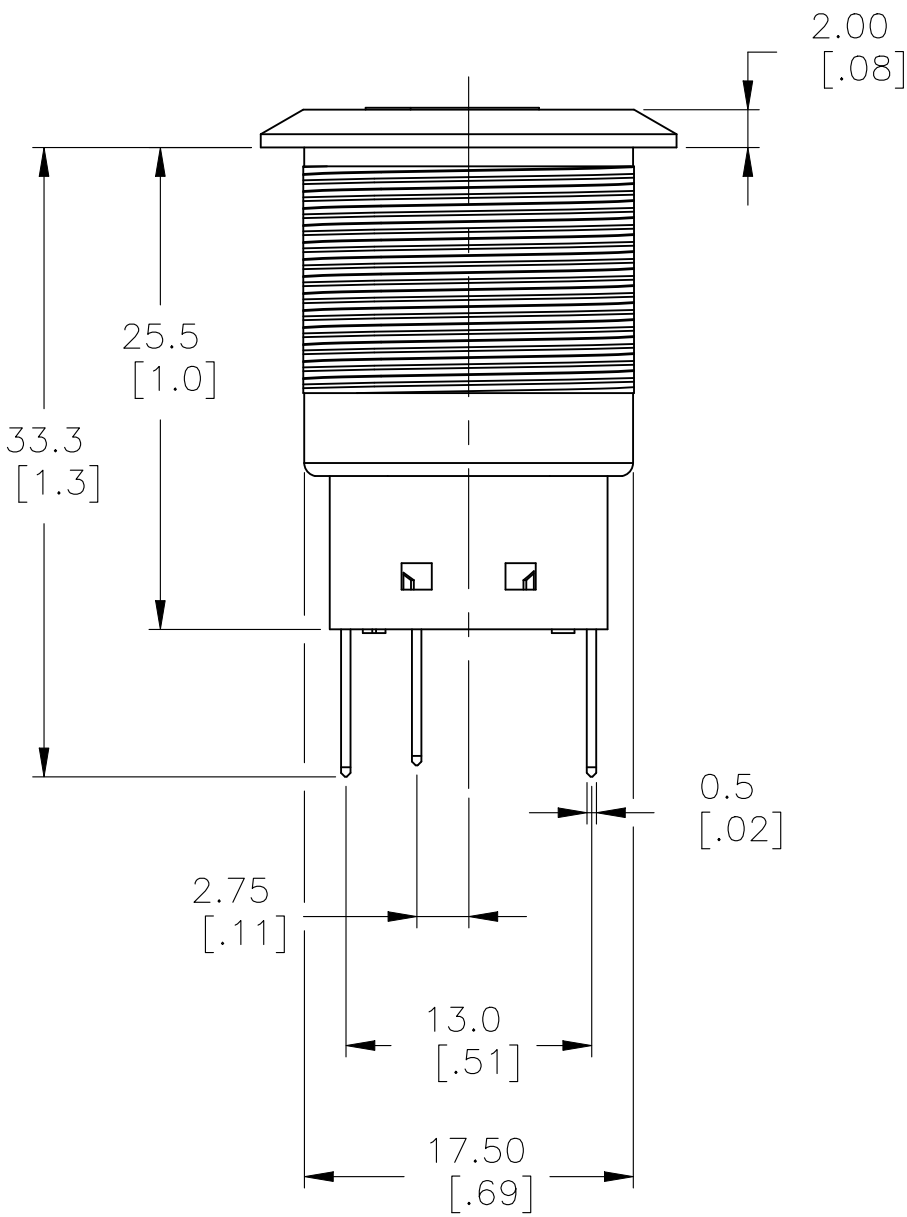
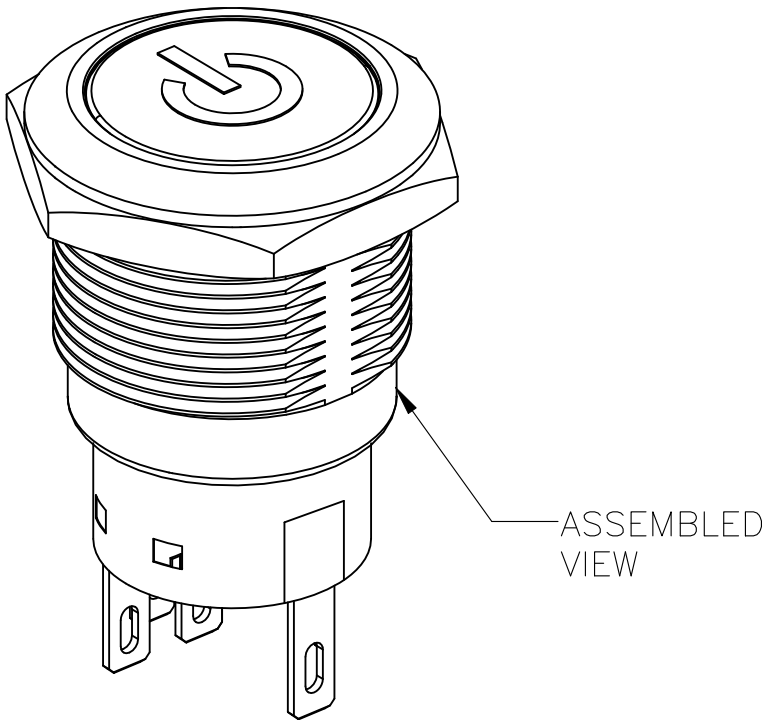
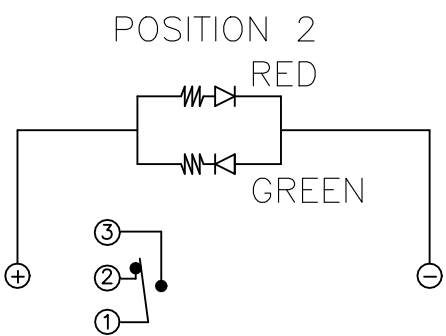
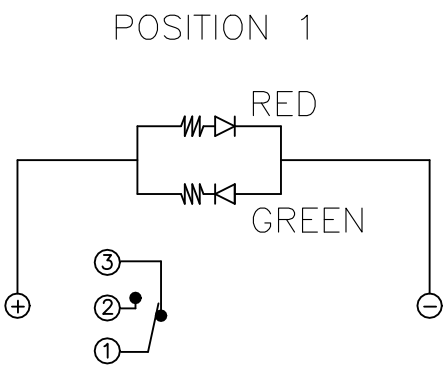


REVISIONS					
P	LTR	DESCRIPTION	DATE	DWN	APVD
	A1	ECO-21-006709	18JUN2021	RK	AS

SINGLE POLE SWITCH WITH DUAL COLOR LED's



PANEL CUTOUT  
MAX.PANEL THICKNESS: 10.00[.394]

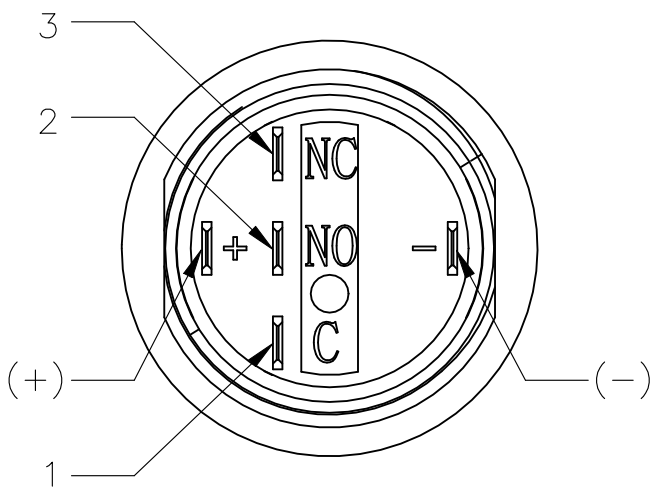


EXPLODED VIEW

**SPECIFICATION:**  
CONTACT RATING: SILVER; 3A @ 250VAC RESISTIVE  
GOLD; 0.4A @ 20VDC OR PEAK AC  
INSULATION RESISTANCE: 1,000MΩ MIN AT 500VDC  
DIELECTRIC STRENGTH: 2,000V RMS @ SEA LEVEL  
CONTACT RESISTANCE: 50mΩ MAX @ 1A 12VDC (INITIAL VALUE), SOLDER TERMINALS  
100mΩ MAX @ 1A 12VDC (INITIAL VALUES), FLYING LEADS.  
ELECTRICAL LIFE CYCLES: 50,000 MAKE AND BREAK CYCLES AT FULL LOAD.  
ACTUATION FORCE: SP: 2.5±1 N, DP: 3.5±1 N  
ACTUATION TRAVEL: APPROXIMATELY 3.2mm  
SEALED PER IP67, IK10  
OPERATING TEMPERATURE: -20°C TO +55°C  
MECHANICAL LIFECYCLES: MOMENTARY; 1,000,000 CYCLES  
LOCKING; 500,000 CYCLES  
HARDWARE TORQUE: 5-14 N-m.

**MATERIALS**  
BUSHING: STAINLESS STEEL,  
BASE: PBT (UL 94-V0), PC (UL 94-V2),  
ACTUATOR: STAINLESS STEEL, PC  
O-RING: SILICONE,  
TERMINAL/CONTACT: COPPER BASE, SILVER/GOLD PLATED,  
HEX NUT: BRASS BASE, NICKEL PLATED,  
WIRE:UL3385.  
INNER ASSEMBLY: POM/PA66  
SPRING: SPRING STEEL  
SEALING: SILICONE

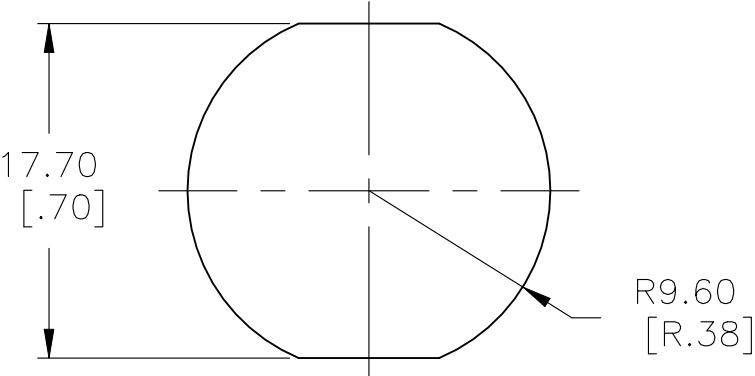
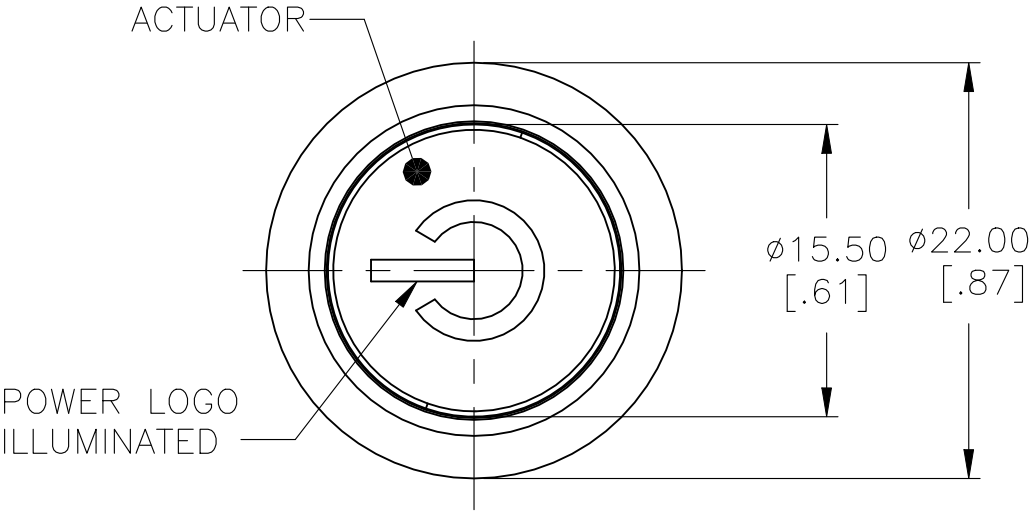
1. ALL MATERIAL AND FINISHES SHALL COMPLY WITH EU DIRECTIVE 2002/95/EC OF 27JAN2003(ROHS).



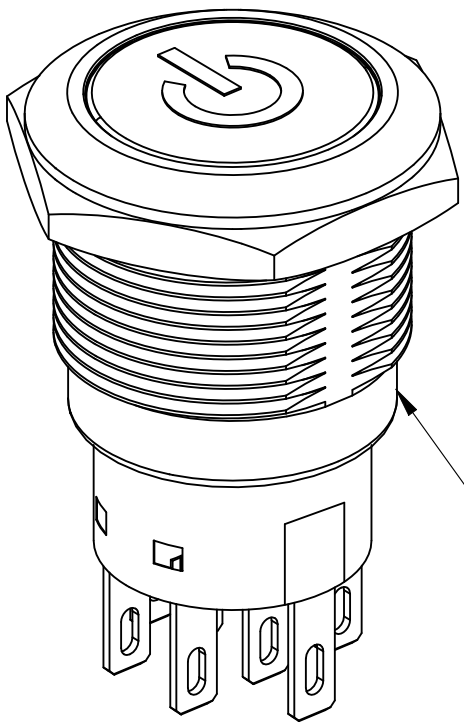
THIS DRAWING IS A CONTROLLED DOCUMENT.		DWN SHIVAKUMAR S S 15FEB2017	TE Connectivity			
		CHK SANJAY SHINDIKAR 15FEB2017				
DIMENSIONS: mm [INCHES]		APVD SANJAY SHINDIKAR 15FEB2017	NAME ANTI-VANDAL SWITCH 19mm SOLDER TERMINAL FLYING LEADS, POWER LOGO DUAL COLOR LED			
		PRODUCT SPEC				
		APPLICATION SPEC				
MATERIAL		WEIGHT	SIZE A2	CAGE CODE 00779	DRAWING NO C-2316366	RESTRICTED TO -
		CUSTOMER DRAWING	SCALE 1:1	SHEET 1 of 5	REV A1	

REVISIONS					
P	LTR	DESCRIPTION	DATE	DWN	APVD
-	-	SEE SHEET 1	-	-	-

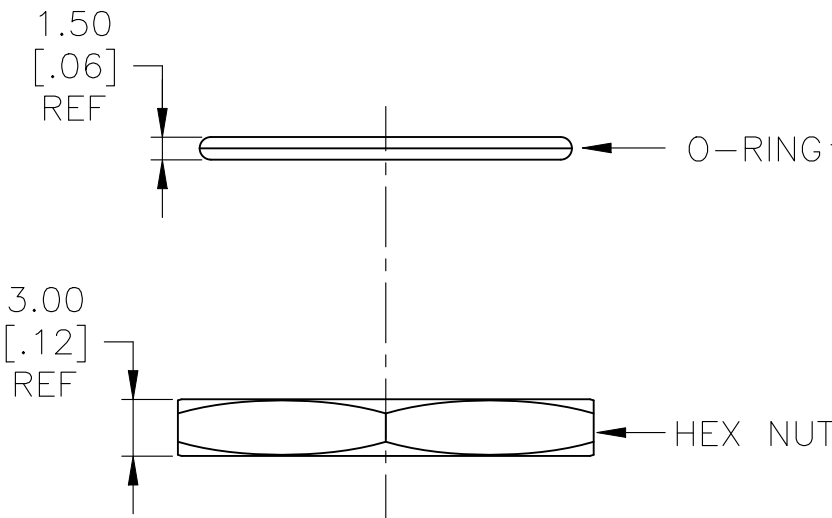
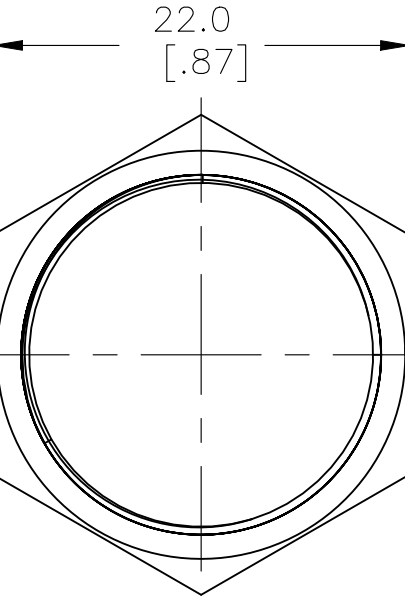
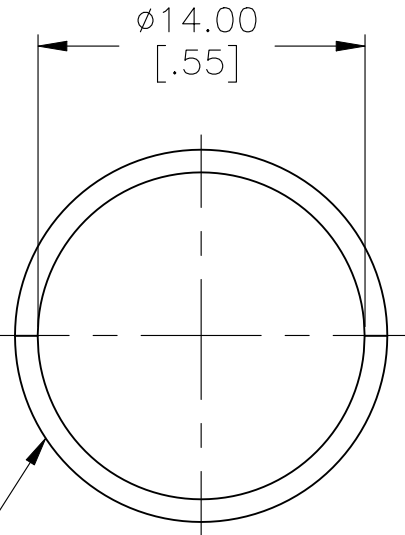
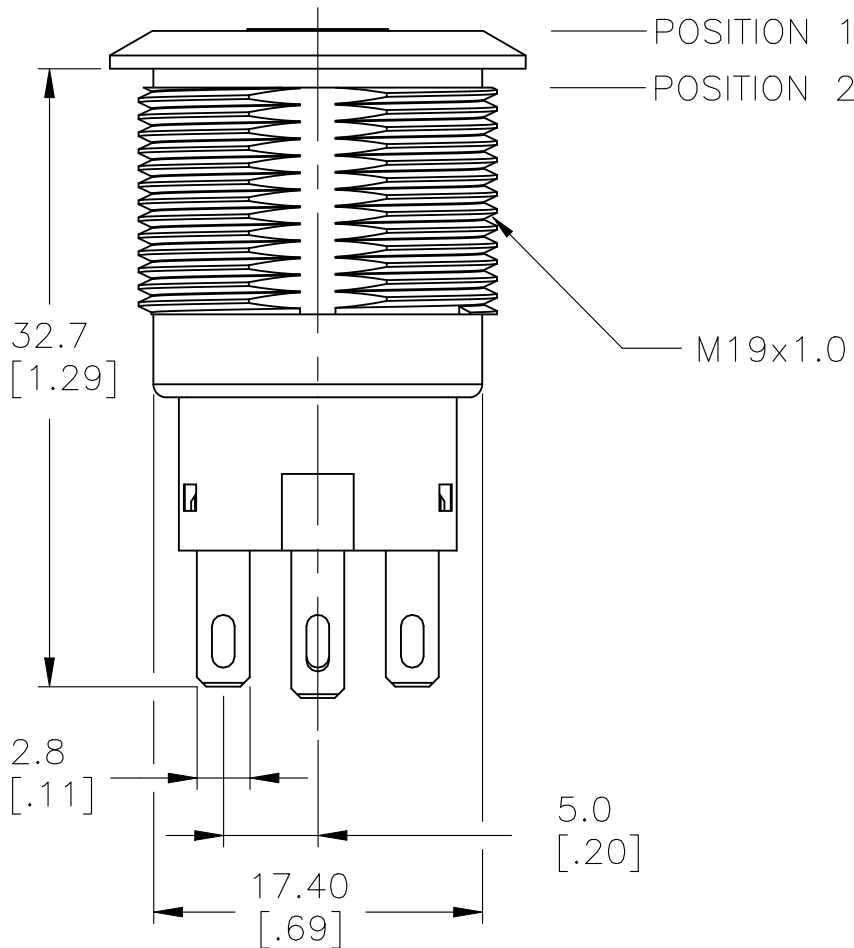
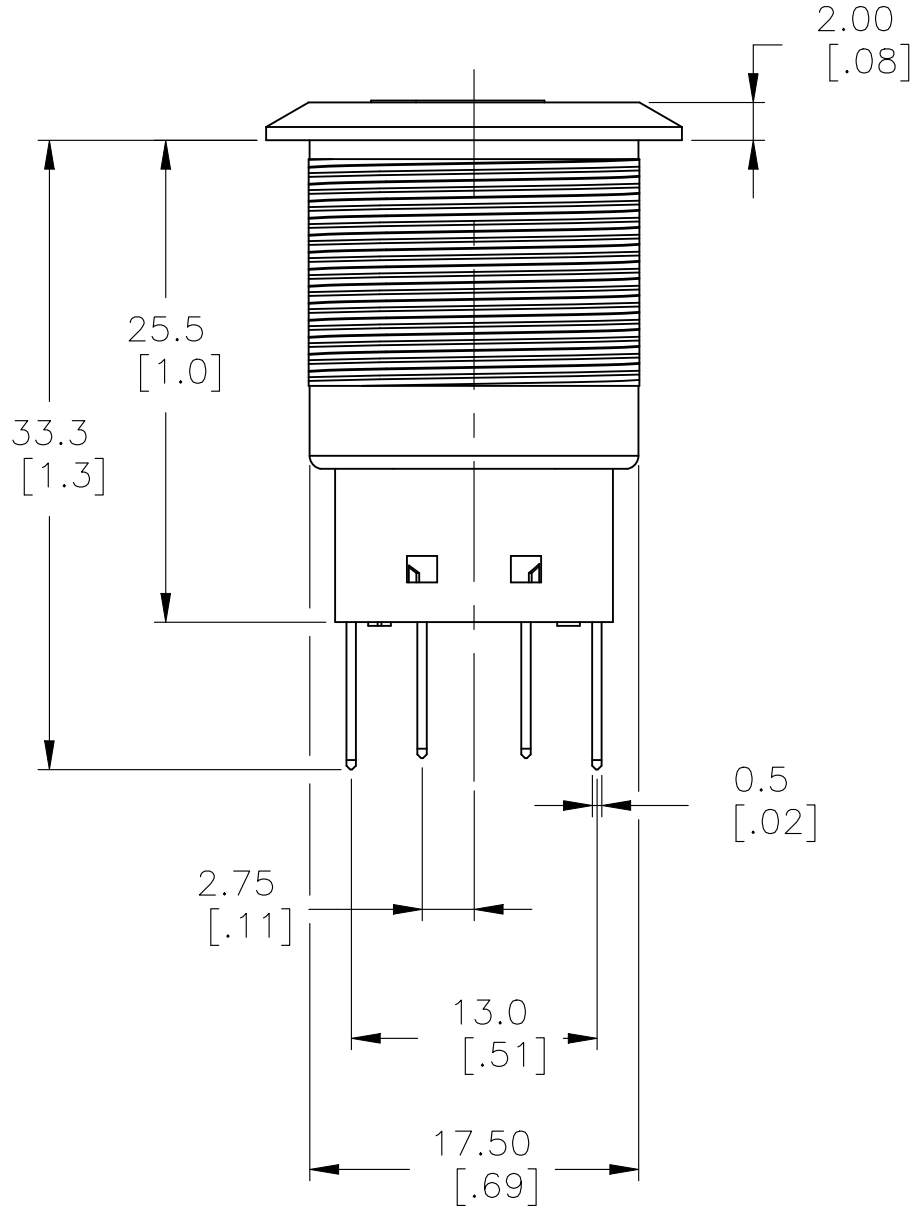
DOUBLE POLE SWITCH WITH DUAL COLOR LED's



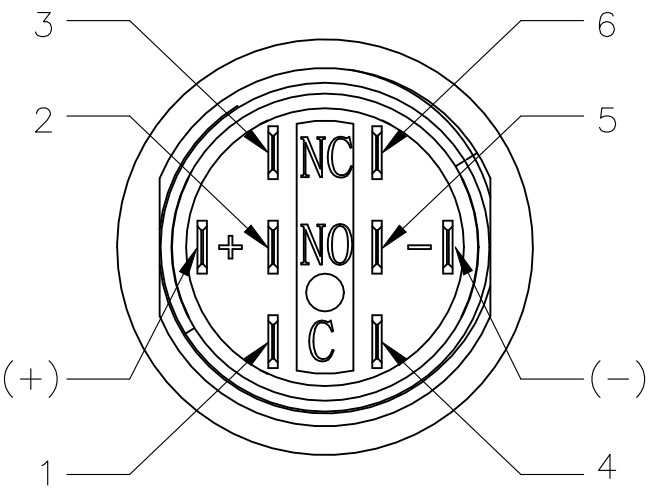
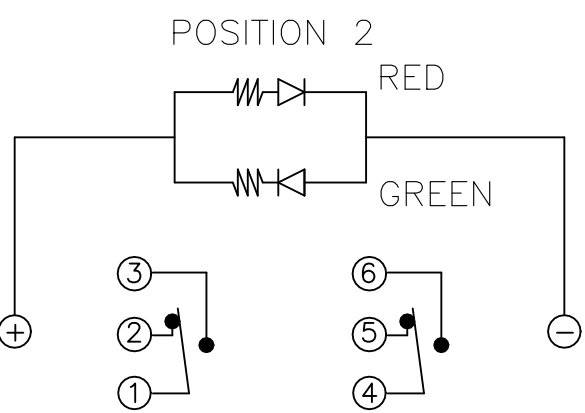
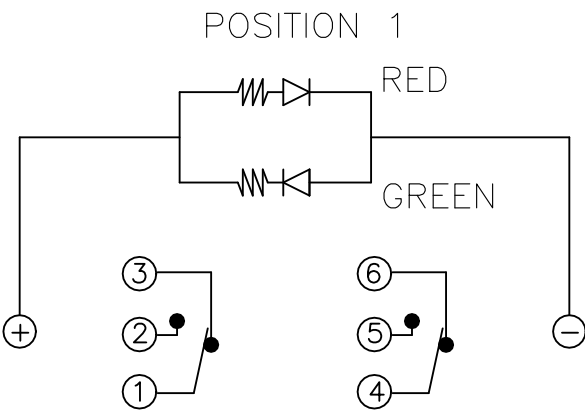
PANEL CUTOUT  
MAX.PANEL THICKNESS: 10.00[.394]





ASSEMBLED VIEW



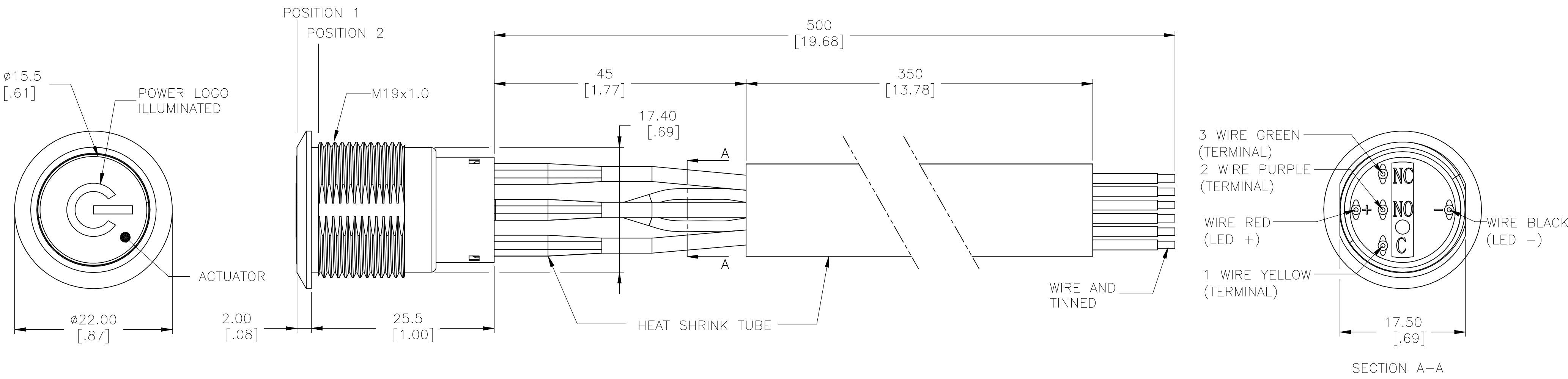
EXPLODED VIEW



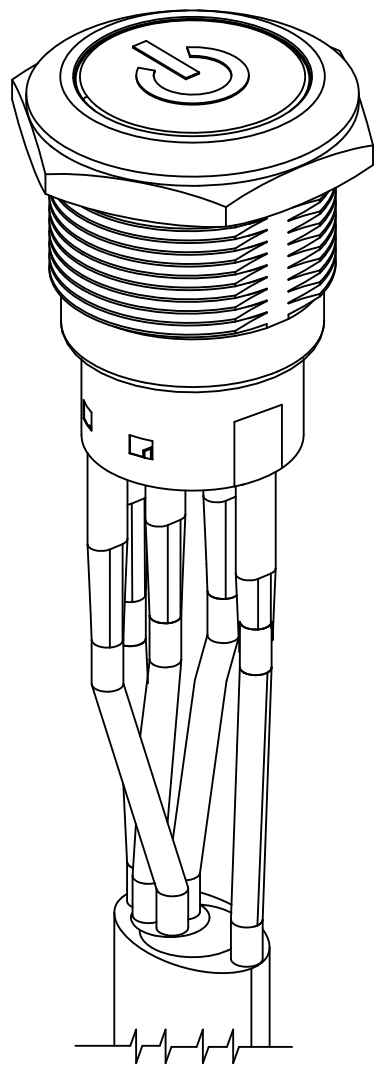
THIS DRAWING IS A CONTROLLED DOCUMENT.			DWN 15FEB2017 SHIVAKUMAR S S		 TE Connectivity	
DIMENSIONS: mm [INCHES]			CHK 15FEB2017 SANJAY SHINDIKAR	APVD 15FEB2017 SANJAY SHINDIKAR		
			TOLERANCES UNLESS OTHERWISE SPECIFIED:		NAME  ANTI-VANDAL SWITCH 19mm SOLDER TERMINAL FLYING LEADS, POWER LOGO DUAL COLOR LED  —	
			0 PLC ± —			
			1 PLC ± 0.4[.016]			
			2 PLC ± 0.25[.010]			
MATERIAL  —			3 PLC ± —		SIZE A2	
			4 PLC ± —			
			ANGLES ± 2°			
			FINISH  —			
			PRODUCT SPEC  —		CAGE CODE 00779	
			APPLICATION SPEC  —			
			WEIGHT 0		DRAWING NO C=2316366	
			CUSTOMER DRAWING			
					RESTRICTED TO  —	
					SCALE 1:1	
					SHEET 2 of 5	
					REV A1	

REVISIONS					
P	LTR	DESCRIPTION	DATE	DWN	APVD
-	-	SEE SHEET 1	-	-	-

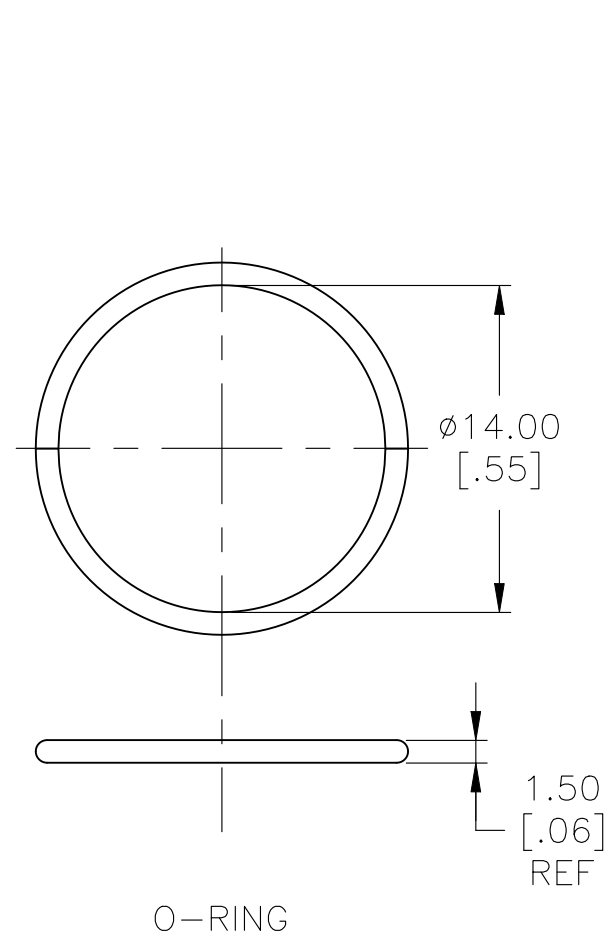
SINGLE POLE SWITCH WITH DUAL COLOR LED'S AND FLYING LEADS



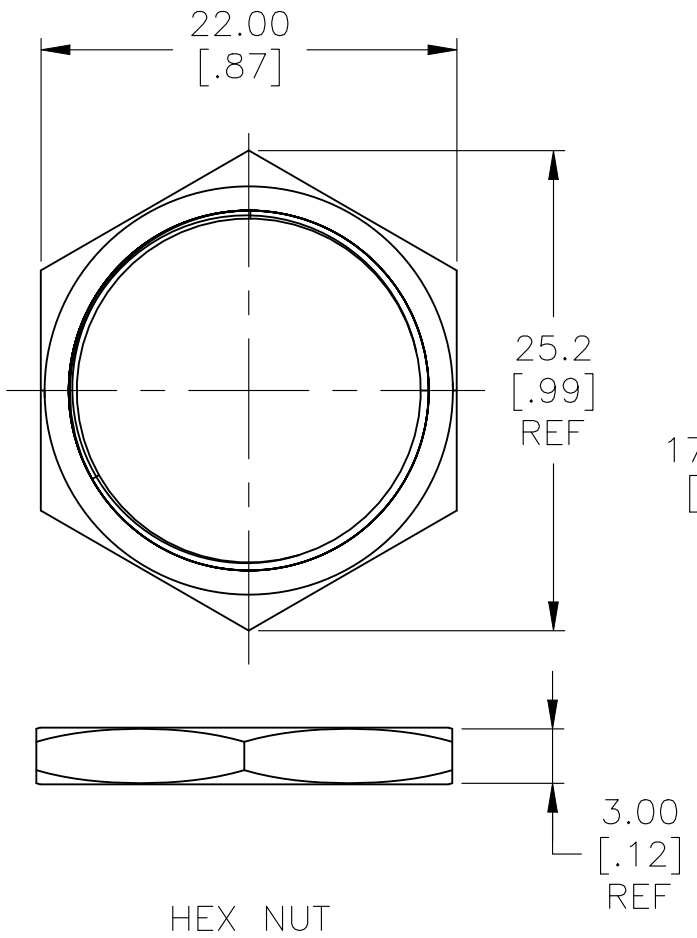
WIRE=18AWG, 300V(BLACK/YELLOW/GREEN/RED/PURPLE)



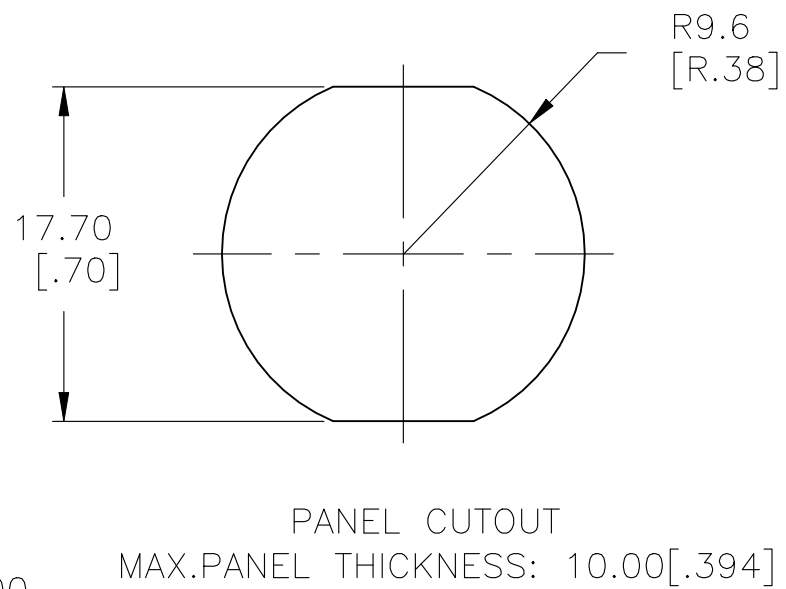
ASSEMBLED VIEW



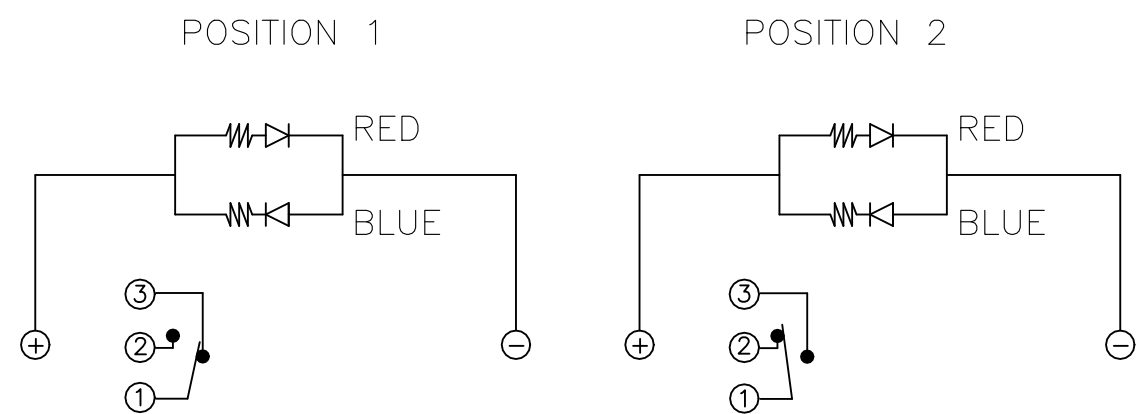
O-RING



HEX NUT



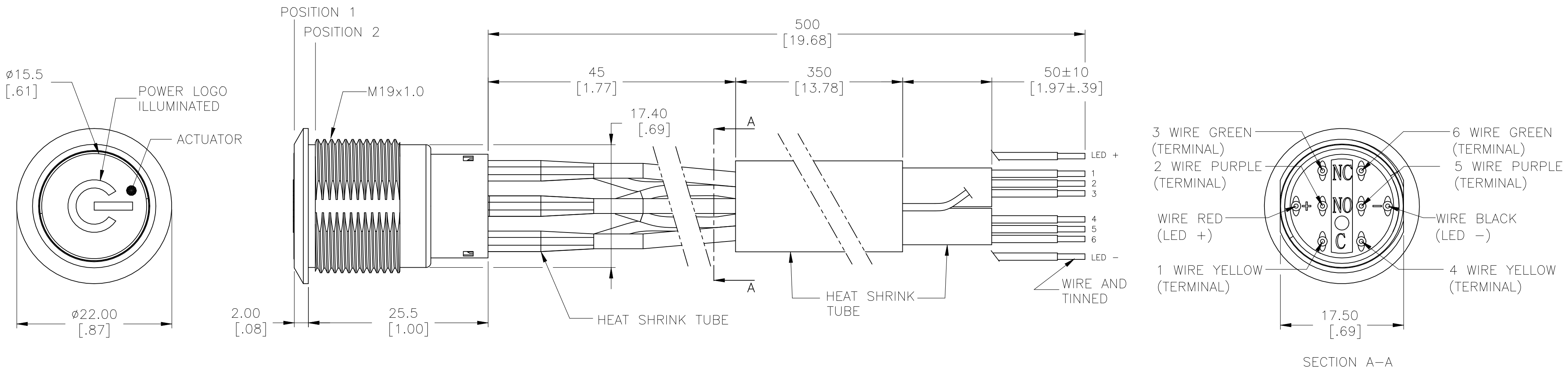
PANEL CUTOUT  
MAX.PANEL THICKNESS: 10.00mm



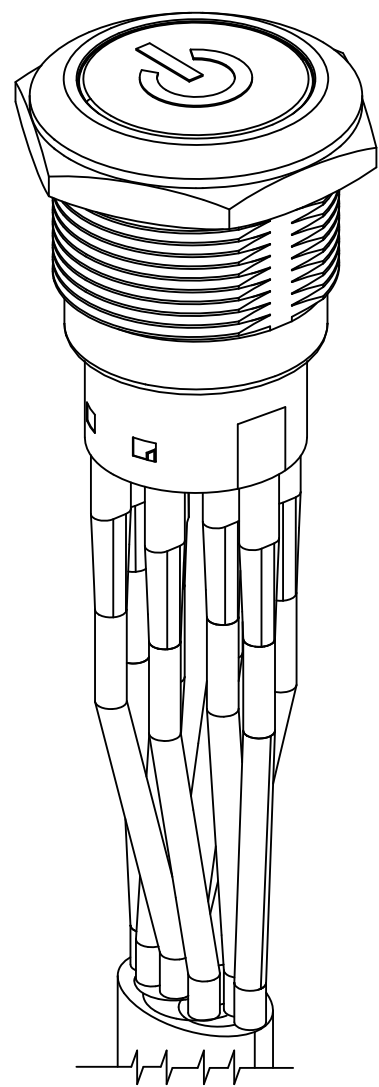
THIS DRAWING IS A CONTROLLED DOCUMENT.		DWN 15FEB2017 SHIVAKUMAR S S	TE Connectivity		
DIMENSIONS: mm [INCHES]		CHK 15FEB2017 SANJAY SHINDIKAR			
		APVD 15FEB2017 SANJAY SHINDIKAR	NAME ANTI-VANDAL SWITCH 19mm SOLDER TERMINAL FLYING LEADS, POWER LOGO DUAL COLOR LED		
		PRODUCT SPEC	SIZE A2		
TOLERANCES UNLESS OTHERWISE SPECIFIED:		APPLICATION SPEC	CAGE CODE 00779		DRAWING NO C=2316366
0 PLC ± - 1 PLC ± 0.4[.016] 2 PLC ± 0.25[.010] 3 PLC ± - 4 PLC ± - ANGLES ± 2°		WEIGHT 0	RESTRICTED TO -		SCALE 1:1
MATERIAL -		CUSTOMER DRAWING	SHEET 3 OF 5		REV A1

REVISIONS					
P	LTR	DESCRIPTION	DATE	DWN	APVD
-	-	SEE SHEET 1	-	-	-

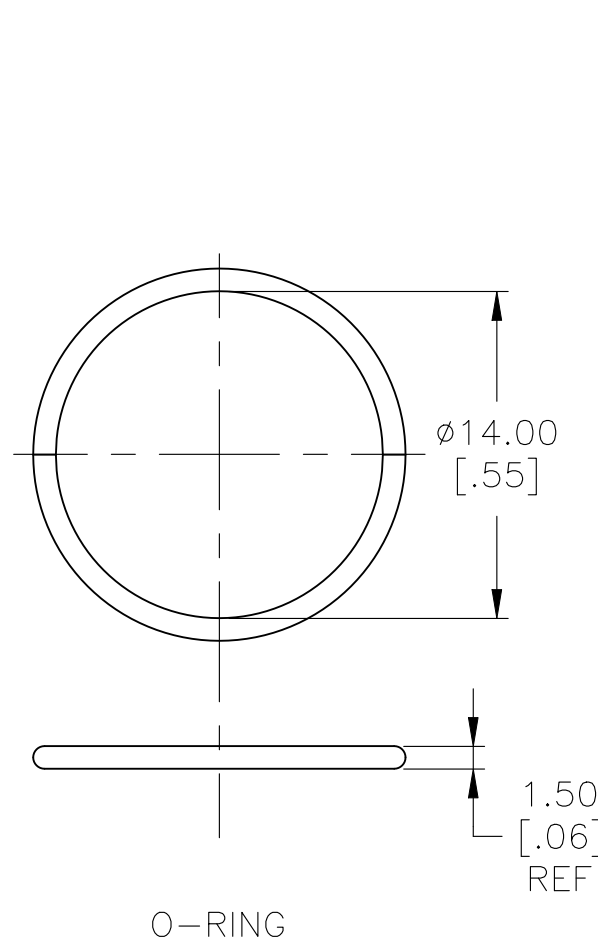
DOUBLE POLE SWITCH WITH DUAL COLOR LED's AND FLYING LEADS



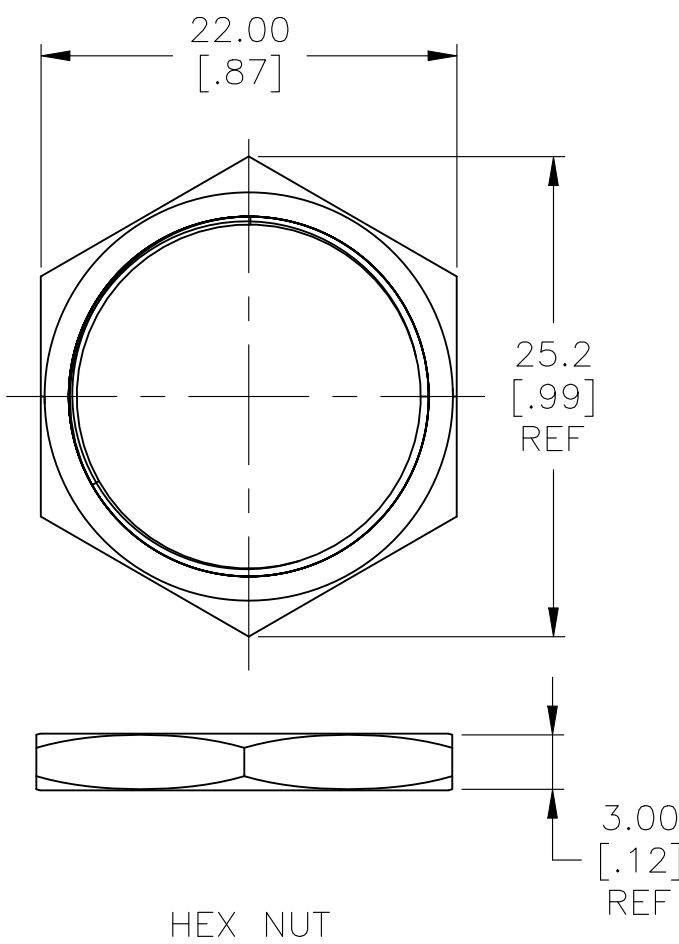
WIRE=18AWG, 300V(BLACK/YELLOW/GREEN/RED/PURPLE)



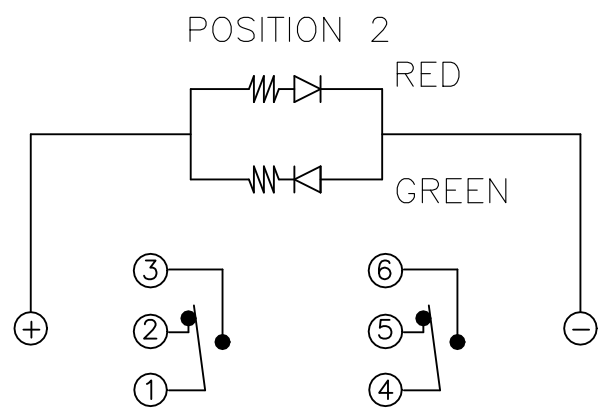
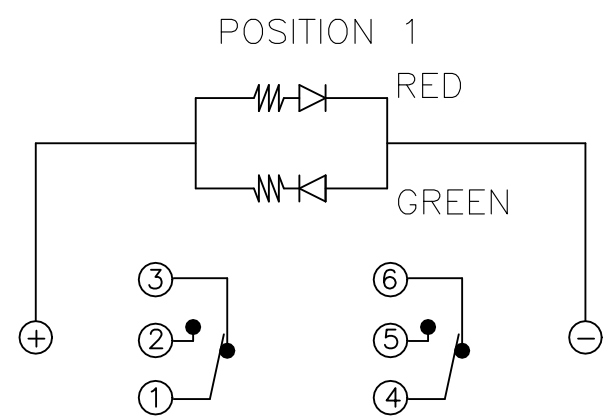
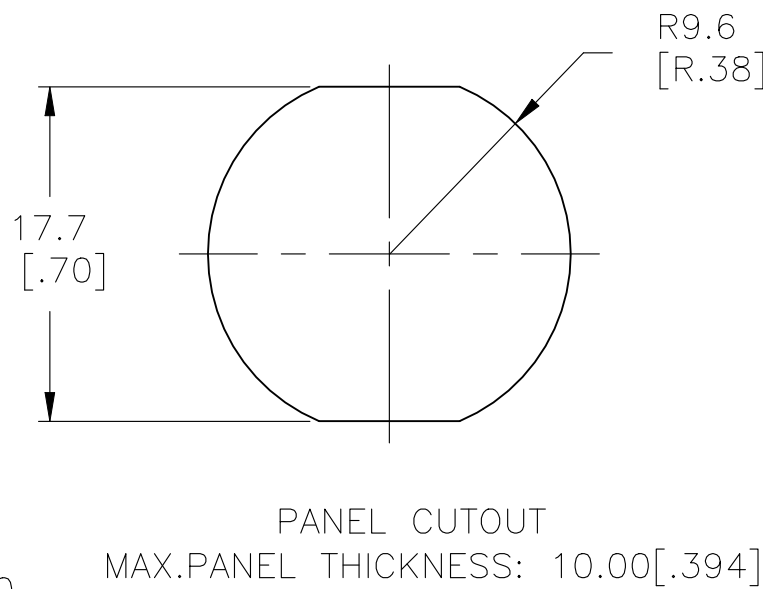
ASSEMBLED VIEW



O-RING



HEX NUT



A

# Mouser Electronics

Authorized Distributor

Click to View Pricing, Inventory, Delivery & Lifecycle Information:

[TE Connectivity:](#)

[3-2316366-9](#)