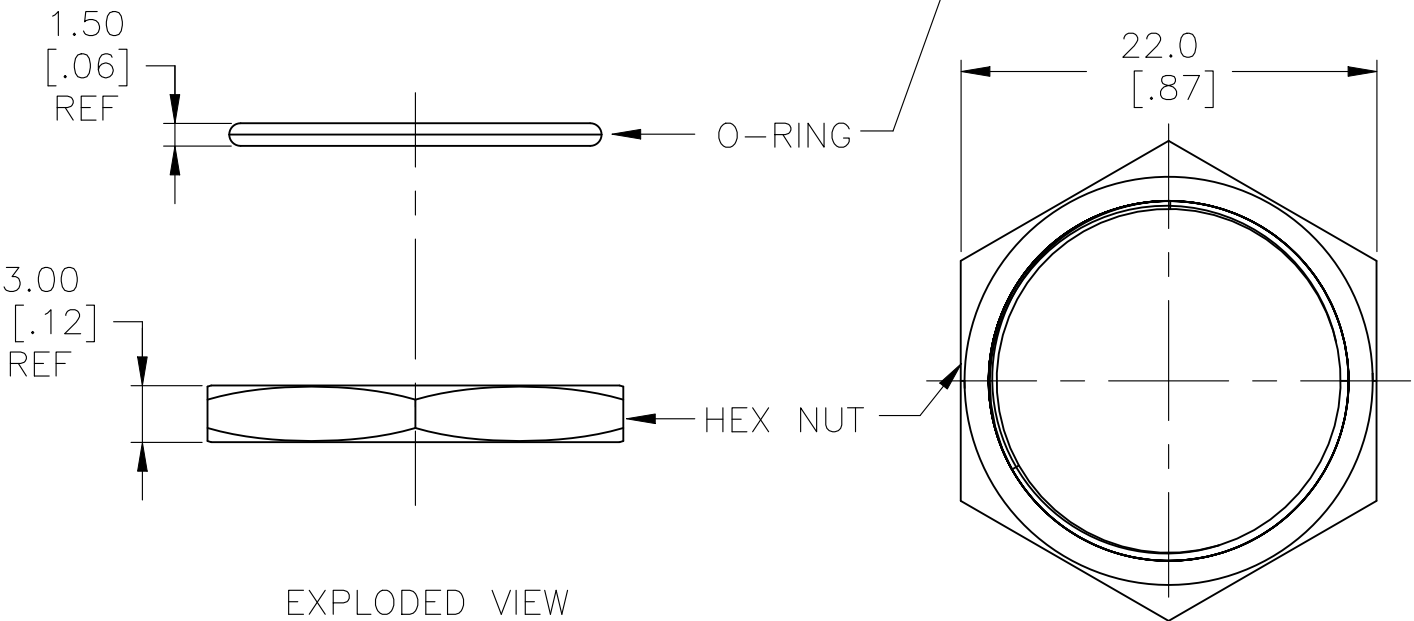
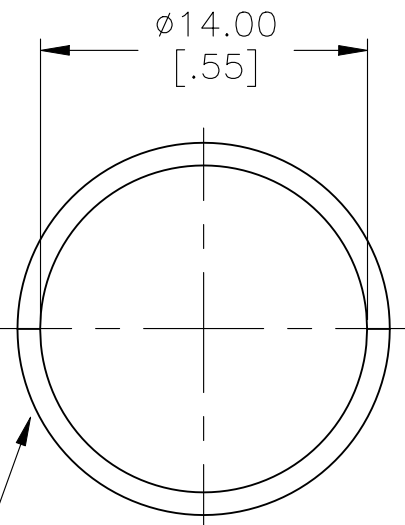
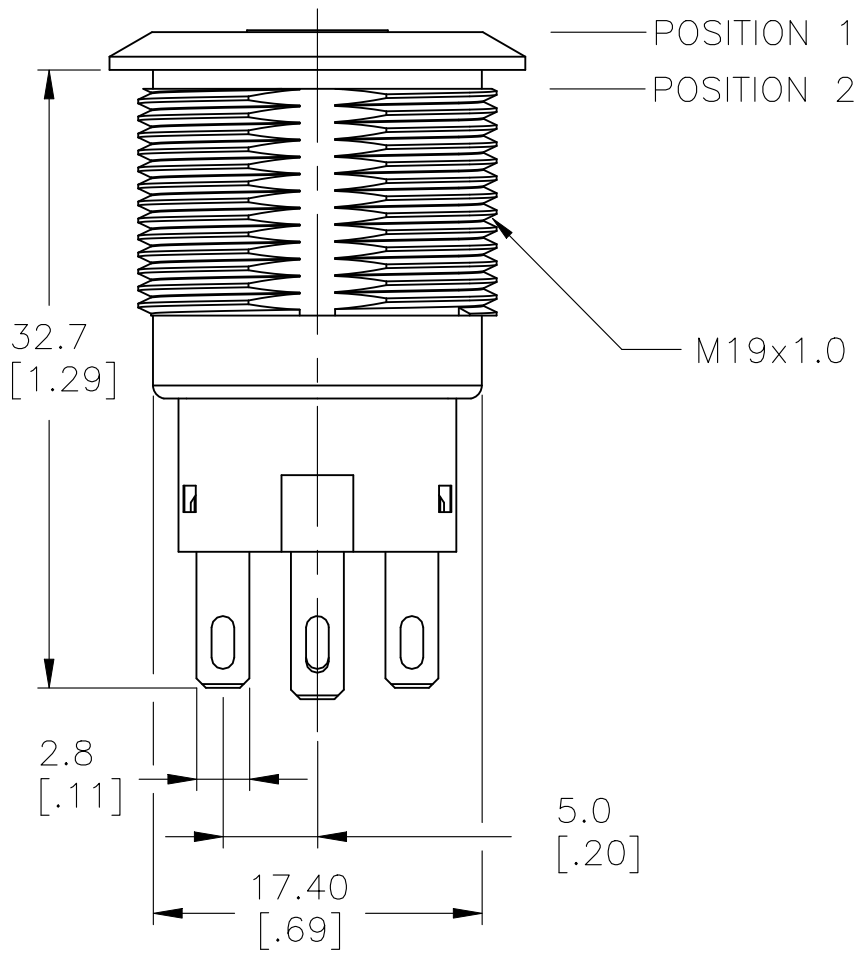
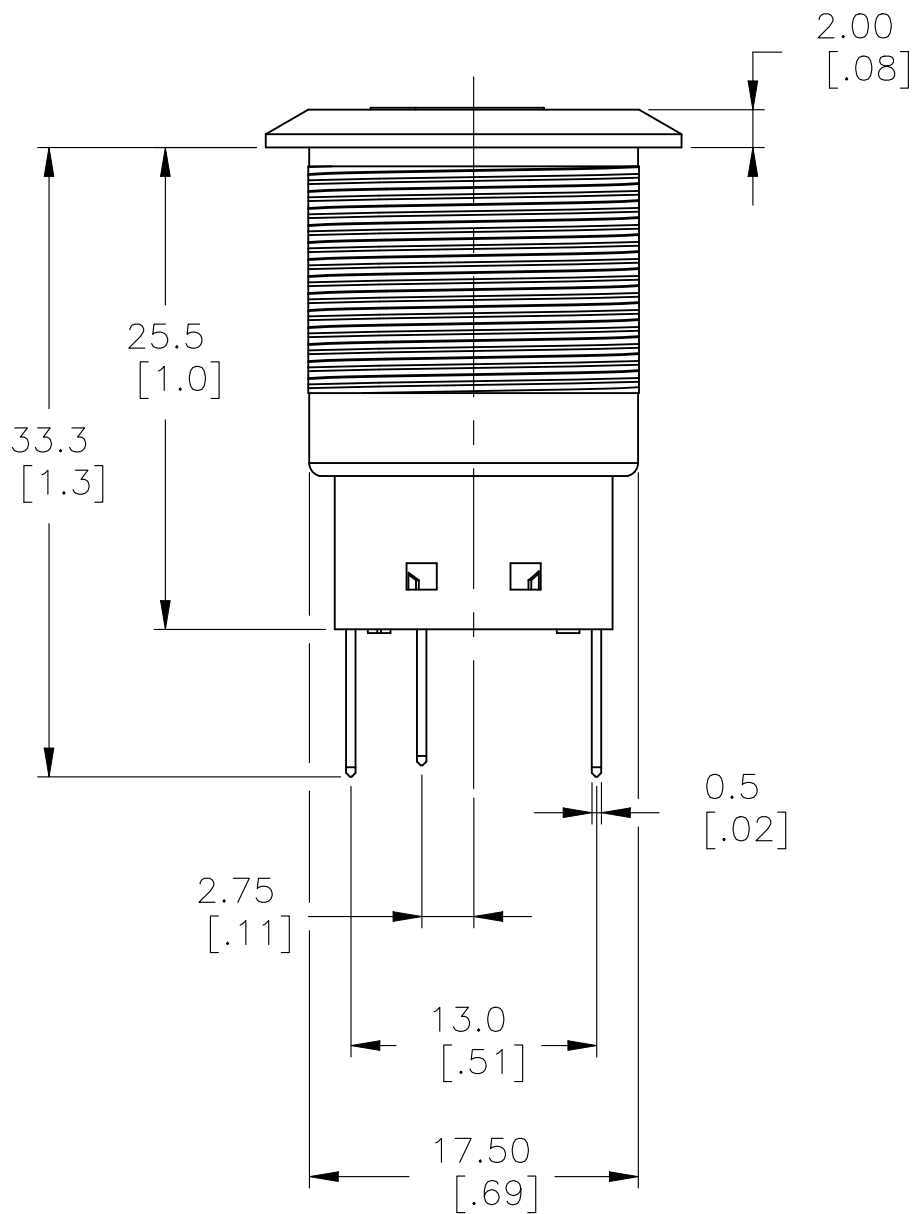
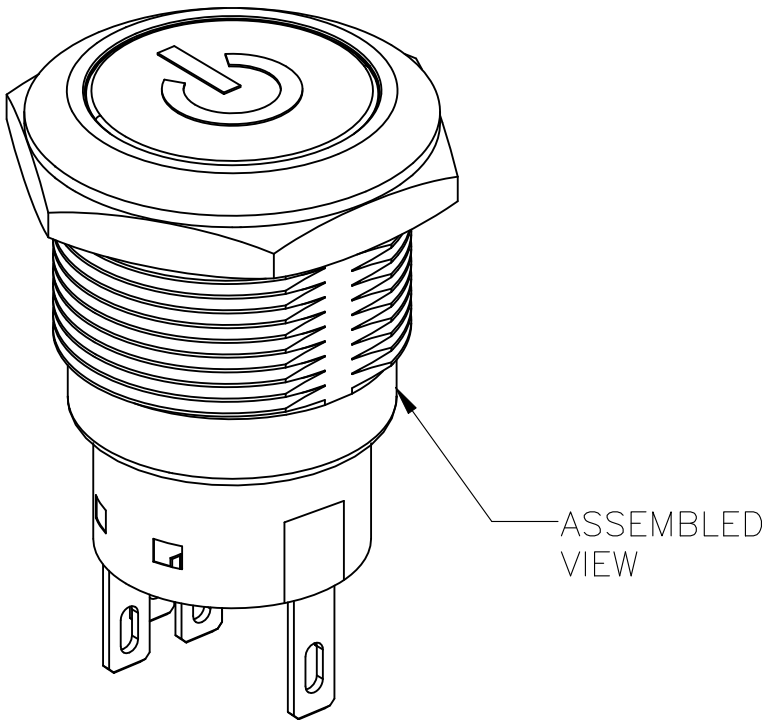
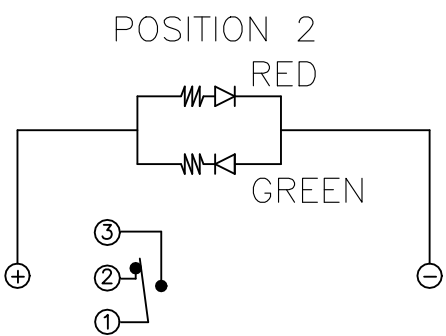
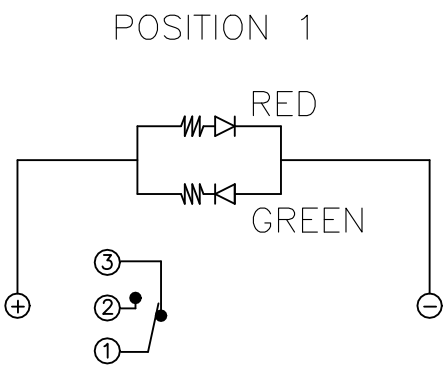
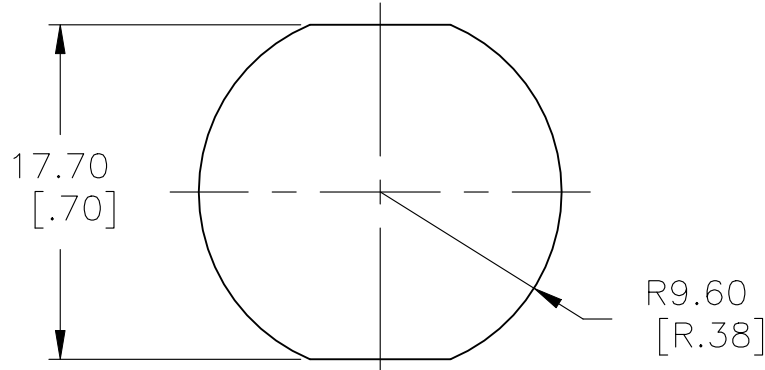
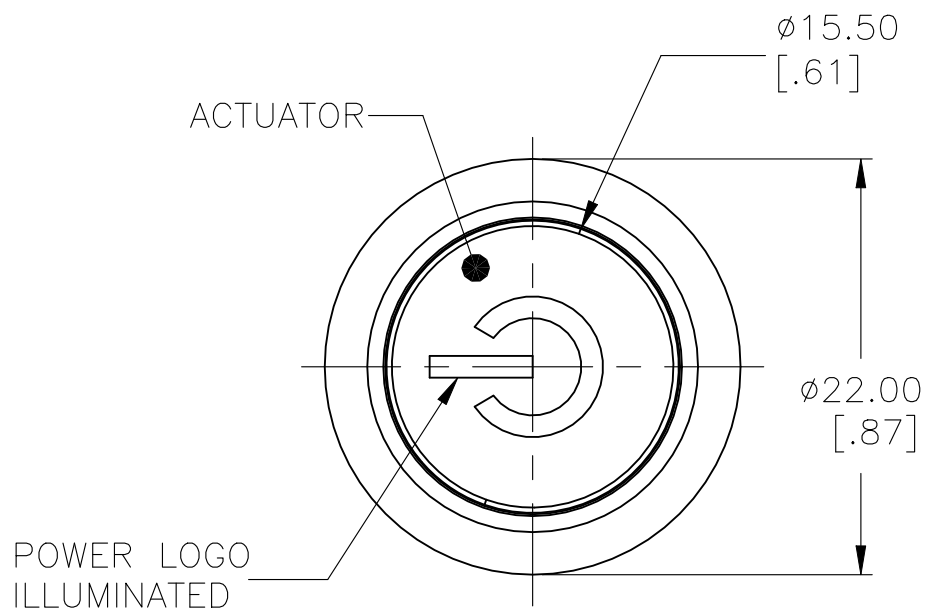


REVISIONS					
P	LTR	DESCRIPTION	DATE	DWN	APVD
	A1	ECO-21-006709	18JUN2021	RK	AS

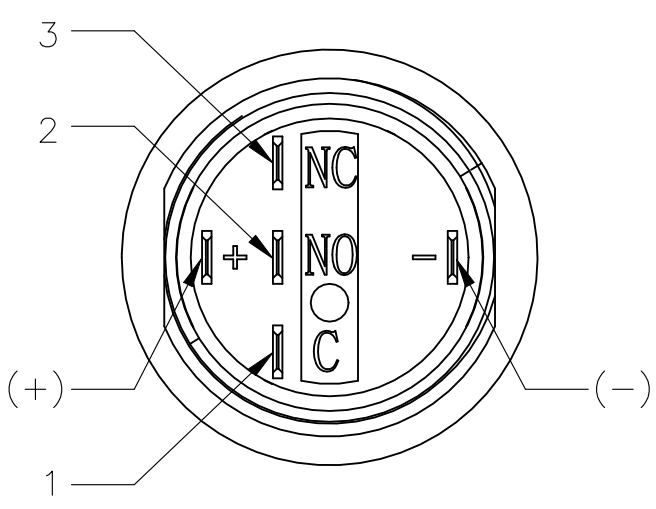
SINGLE POLE SWITCH WITH DUAL COLOR LED's



**SPECIFICATION:**  
CONTACT RATING: SILVER; 3A @ 250VAC RESISTIVE  
GOLD; 0.4A @ 20VDC OR PEAK AC  
INSULATION RESISTANCE: 1,000MΩ MIN AT 500VDC  
DIELECTRIC STRENGTH: 2,000V RMS @ SEA LEVEL  
CONTACT RESISTANCE: 50mΩ MAX @ 1A 12VDC (INITIAL VALUE), SOLDER TERMINALS  
100mΩ MAX @ 1A 12VDC (INITIAL VALUES), FLYING LEADS.  
ELECTRICAL LIFE CYCLES: 50,000 MAKE AND BREAK CYCLES AT FULL LOAD.  
ACTUATION FORCE: SP: 2.5±1 N, DP: 3.5±1 N  
ACTUATION TRAVEL: APPROXIMATELY 3.2mm  
SEALED PER IP67, IK10  
OPERATING TEMPERATURE: -20°C TO +55°C  
MECHANICAL LIFECYCLES: MOMENTARY; 1,000,000 CYCLES  
LOCKING; 500,000 CYCLES  
HARDWARE TORQUE: 5-14 N-m.

**MATERIALS**  
BUSHING: STAINLESS STEEL,  
BASE: PBT (UL 94-V0), PC (UL 94-V2),  
ACTUATOR: STAINLESS STEEL, PC  
O-RING: SILICONE,  
TERMINAL/CONTACT: COPPER BASE, SILVER/GOLD PLATED,  
HEX NUT: BRASS BASE, NICKEL PLATED,  
WIRE: UL3385.  
INNER ASSEMBLY: POM/PA66  
SPRING: SPRING STEEL  
SEALING: SILICONE

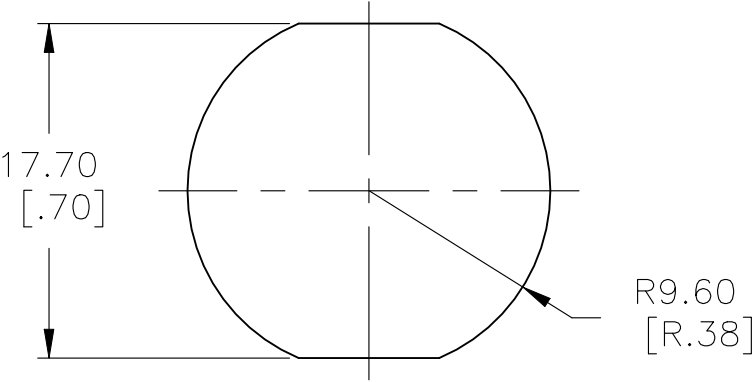
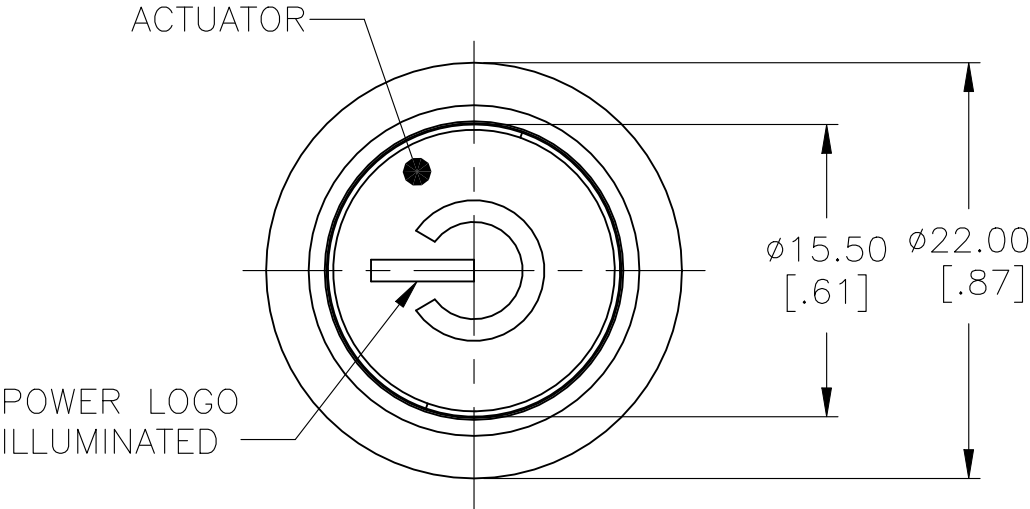
1. ALL MATERIAL AND FINISHES SHALL COMPLY WITH EU DIRECTIVE 2002/95/EC OF 27JAN2003(ROHS).



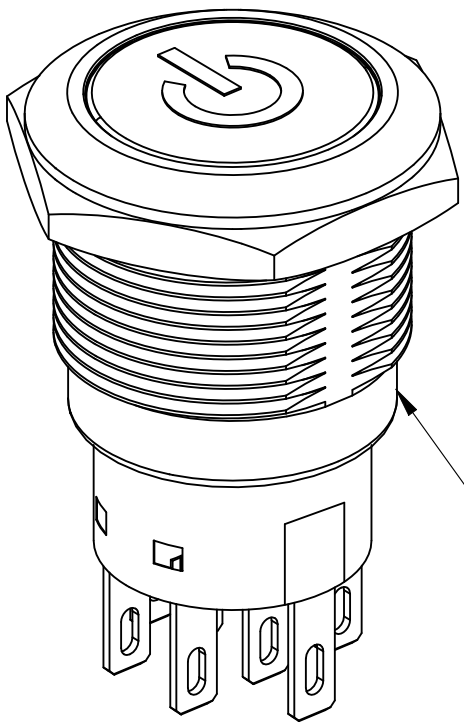
THIS DRAWING IS A CONTROLLED DOCUMENT.		DWN 15FEB2017 SHIVAKUMAR S S	TE Connectivity		
		CHK 15FEB2017 SANJAY SHINDIKAR			
DIMENSIONS: mm [INCHES]		APVD 15FEB2017 SANJAY SHINDIKAR	NAME ANTI-VANDAL SWITCH 19mm SOLDER TERMINAL FLYING LEADS, POWER LOGO DUAL COLOR LED		
		PRODUCT SPEC			
		APPLICATION SPEC			
MATERIAL		WEIGHT	SIZE A2	CAGE CODE 00779	DRAWING NO C-2316366
		CUSTOMER DRAWING	SCALE 1:1	SHEET 1 of 5	REV A1

REVISIONS					
P	LTR	DESCRIPTION	DATE	DWN	APVD
-	-	SEE SHEET 1	-	-	-

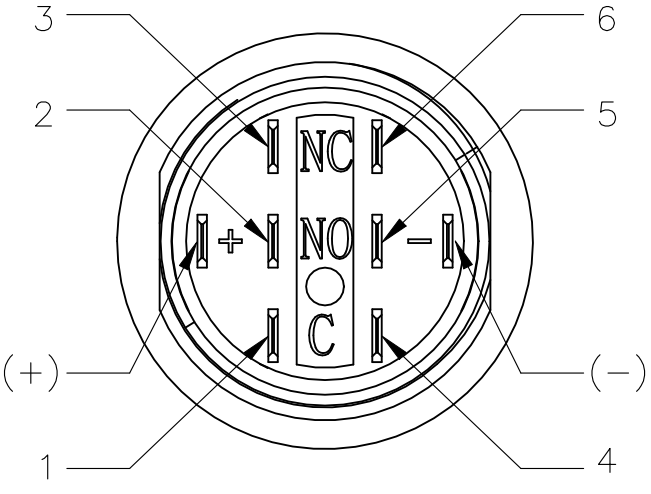
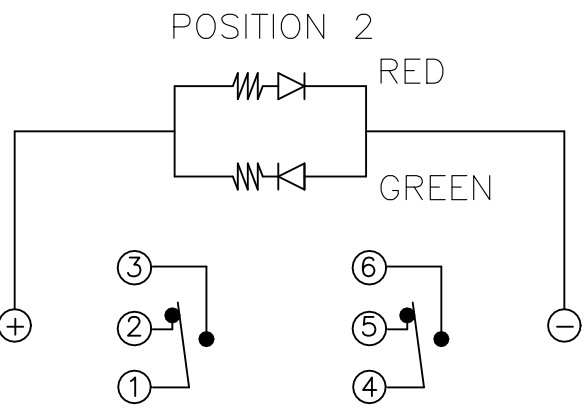
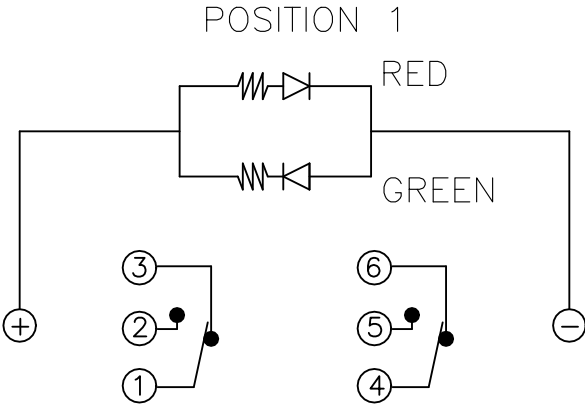
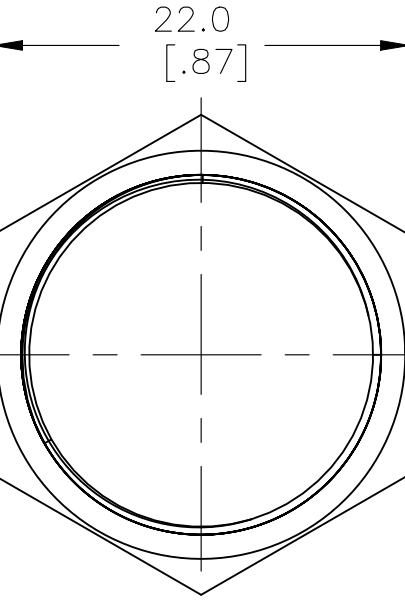
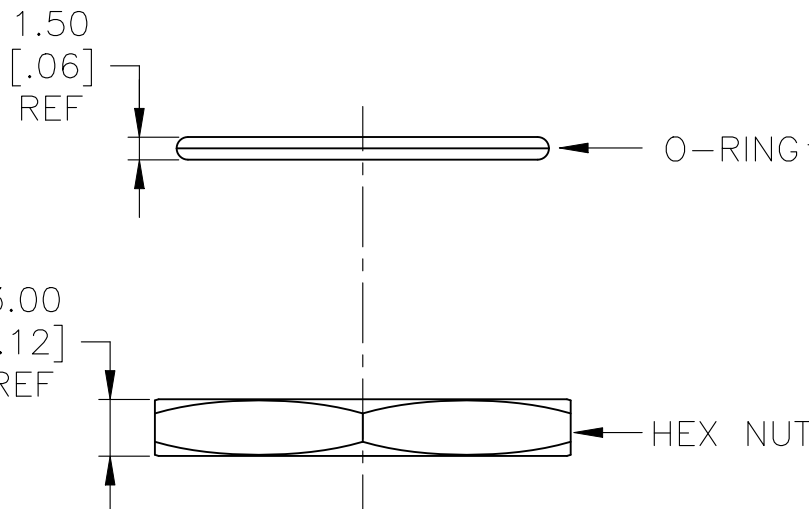
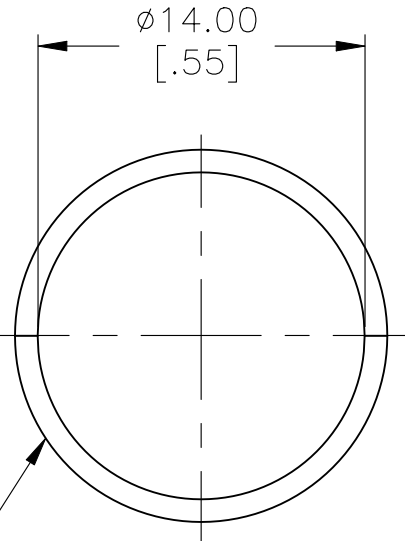
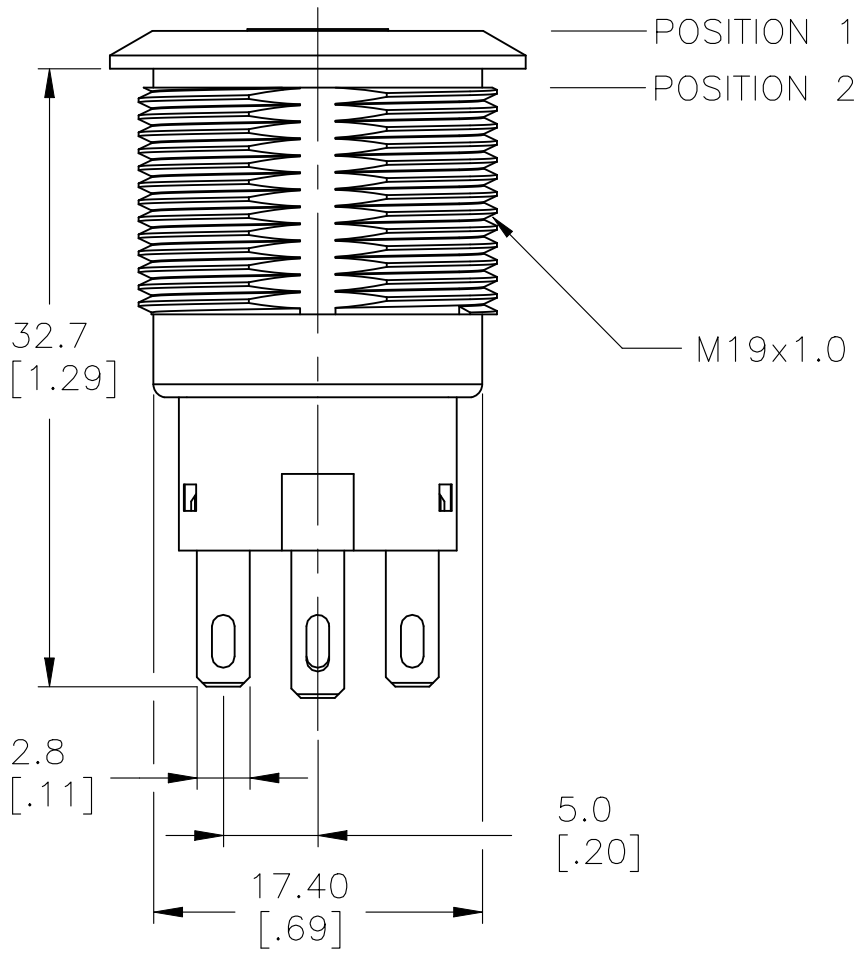
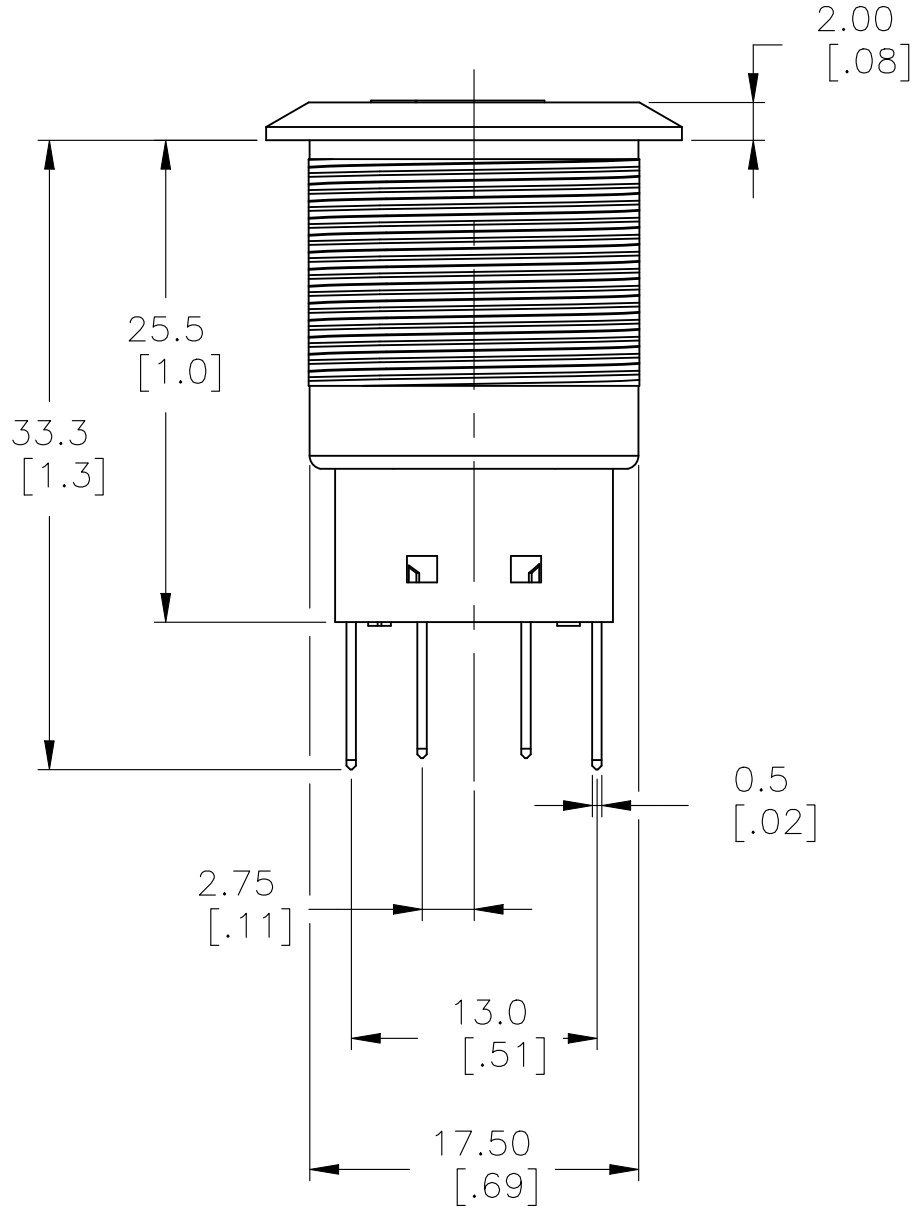
DOUBLE POLE SWITCH WITH DUAL COLOR LED's



PANEL CUTOUT  
MAX.PANEL THICKNESS: 10.00[.394]



ASSEMBLED VIEW

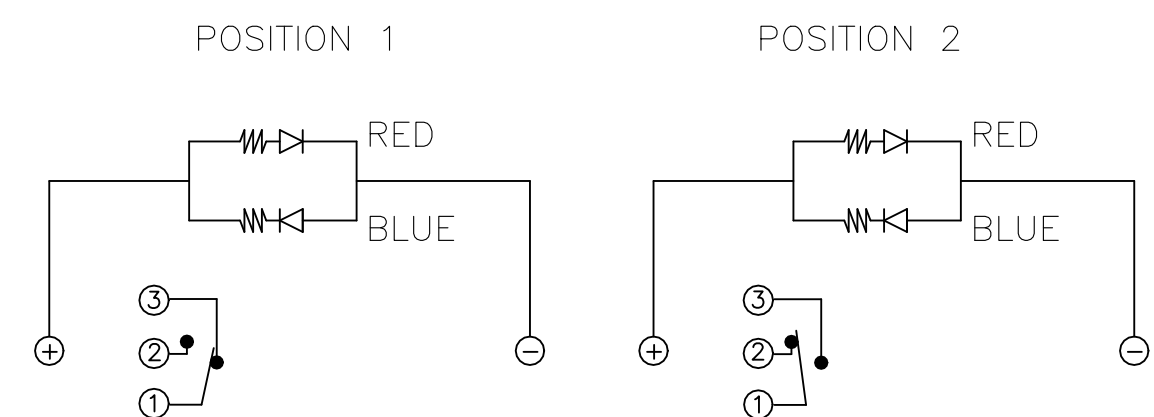




EXPLODED VIEW

THIS DRAWING IS A CONTROLLED DOCUMENT.		DWN 15FEB2017 SHIVAKUMAR S S	TE Connectivity		
DIMENSIONS: mm [INCHES]		CHK 15FEB2017 SANJAY SHINDIKAR			
		APVD 15FEB2017 SANJAY SHINDIKAR	NAME ANTI-VANDAL SWITCH 19mm SOLDER TERMINAL FLYING LEADS, POWER LOGO DUAL COLOR LED		
		PRODUCT SPEC	-		
TOLERANCES UNLESS OTHERWISE SPECIFIED:		APPLICATION SPEC	-		
0 PLC ± -		WEIGHT 0	SIZE A2	CAGE CODE 00779	DRAWING NO C-2316366
1 PLC ± 0.4[.016]		CUSTOMER DRAWING			
2 PLC ± 0.25[.010]		SCALE 1:1			
3 PLC ± -		SHEET 2 of 5			
4 PLC ± -		REV A1			
ANGLES ± 2°					
FINISH -					

## REVISIONS

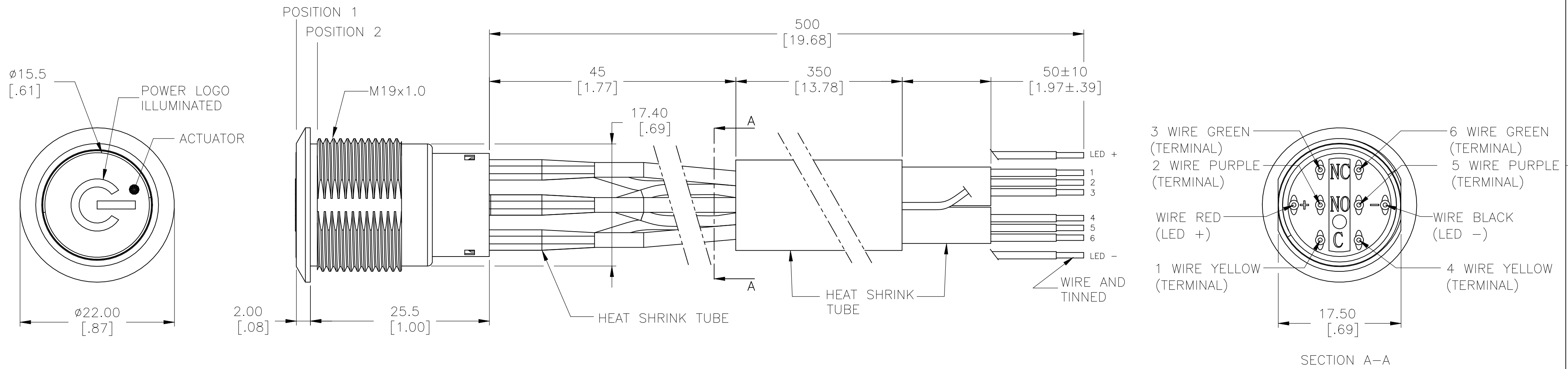
P	LTR	DESCRIPTION	DATE	DWN	APVD
	—	SEE SHEET 1	—	—	—



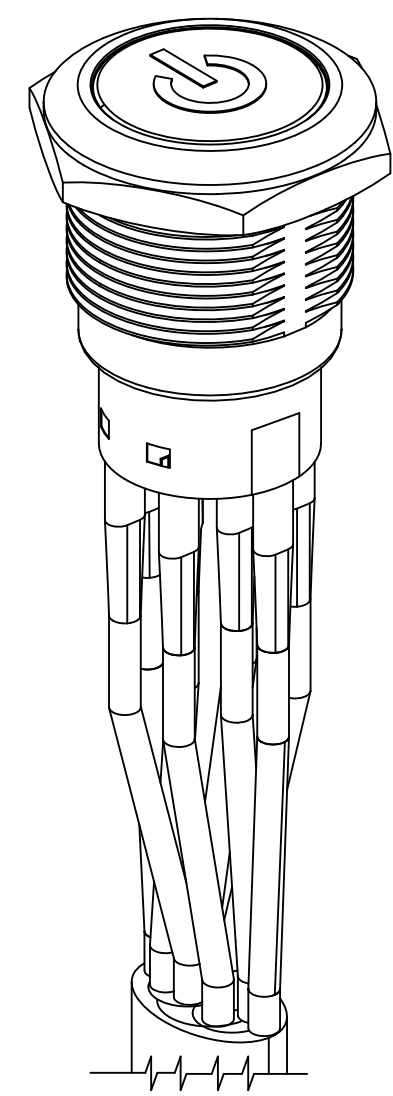
THIS DRAWING IS A CONTROLLED DOCUMENT.		DWN SHIVAKUMAR S S 15FEB2017		 TE Connectivity	
DIMENSIONS: mm [INCHES]		TOLERANCES, UNLESS OTHERWISE SPECIFIED:		NAME ANTI-VANDAL SWITCH 19mm SOLDER TERMINAL FLYING LEADS, POWER LOGO DUAL COLOR LED	
		0 PLC ± - 1 PLC ± 0.4[.016] 2 PLC ± 0.25[.010] 3 PLC ± - 4 PLC ± - ANGLES ± 2°		PRODUCT SPEC - APPLICATION SPEC -	
MATERIAL -		FINISH -		RESTRICTED TO -	
		DWN SHIVAKUMAR S S 15FEB2017		SIZE A2	
		WEIGHT 0		CAGE CODE 00779	
		CUSTOMER DRAWING		DRAWING NO C-2316366	
				SCALE 1:1	
				SHEET 3 of 5	
				REV A1	

REVISIONS					
P	LTR	DESCRIPTION	DATE	DWN	APVD
-	-	SEE SHEET 1	-	-	-

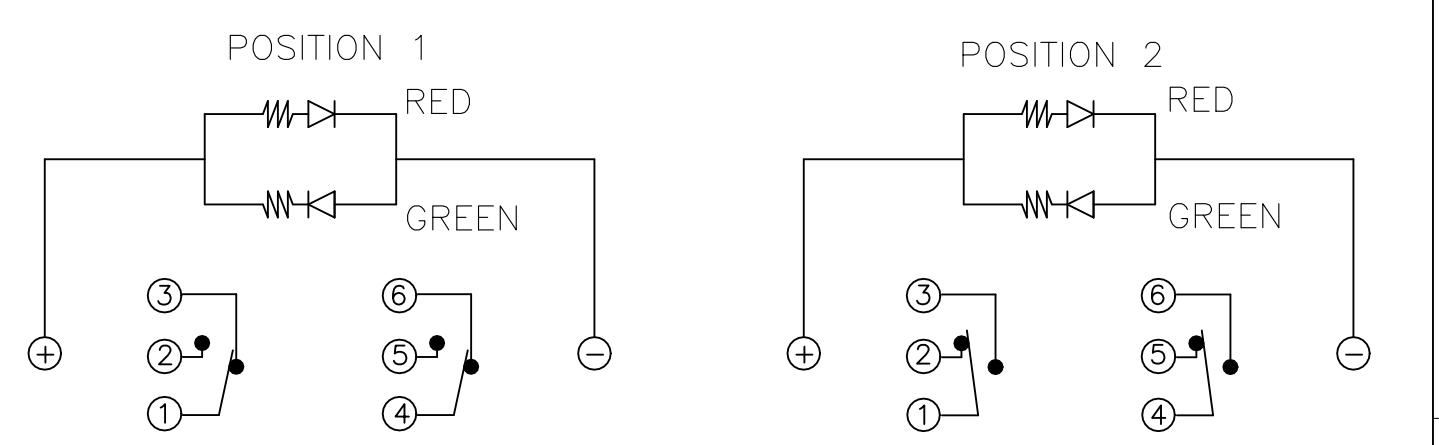
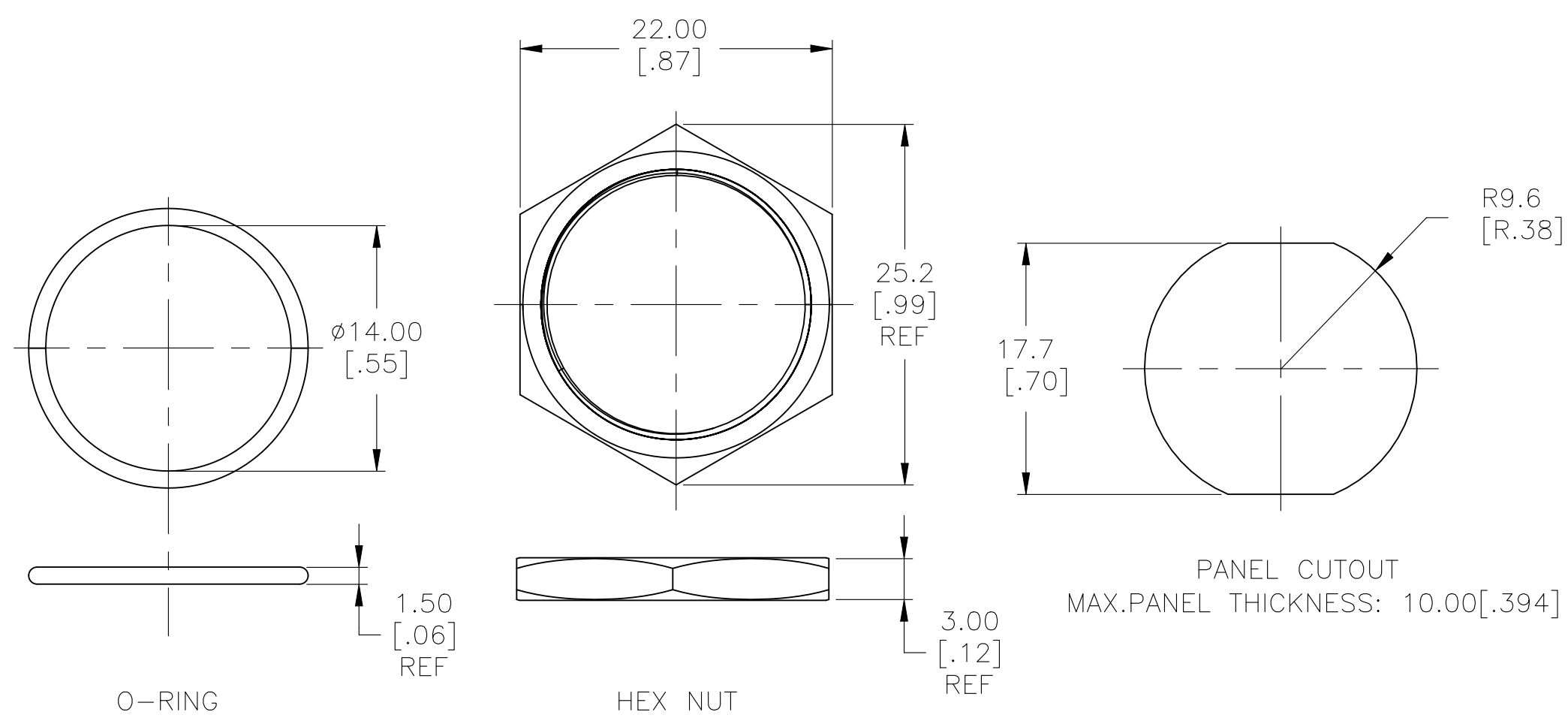
DOUBLE POLE SWITCH WITH DUAL COLOR LED's AND FLYING LEADS



WIRE=18AWG, 300V(BLACK/YELLOW/GREEN/RED/PURPLE)



ASSEMBLED VIEW



A

# Mouser Electronics

Authorized Distributor

Click to View Pricing, Inventory, Delivery & Lifecycle Information:

[TE Connectivity:](#)

[3-2316366-4](#)