

## REVISIONS

P	LTR	DESCRIPTION	DATE	DWN	APVD
	L	PRODUCTION ISSUE	28JAN2019	PNT	MT

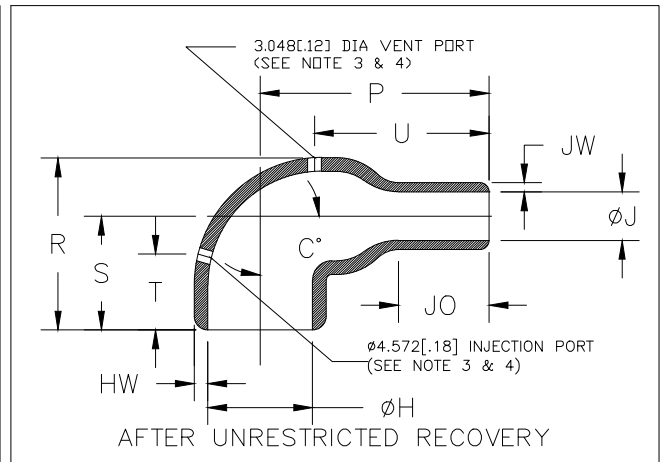
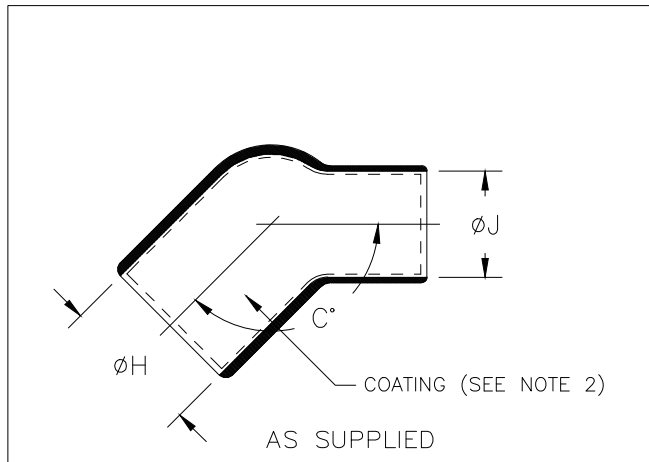


TABLE OF DIMENSIONS


PART NUMBER	H		J		P ±10% b	R ±10% b	S ±10% b	JO ±10% b	T ±10% b	U ±10% b	HW ±20% b	JW ±20% b	C°	
	Min a	Max b	Min a	Max b									±10° a	±5° b
228A011	10.7 [.42]	7.9 [.31]	4.6 [.18]	2.0 [.08]	20.3 [.80]	20.3 [.80]	16.0 [.63]	5.1 [.20]	N/A	12.7 [.50]	1.3 [.05]	1.0 [.04]	135°	90°
228A021	13.7 [.54]	10.4 [.41]	6.6 [.26]	3.0 [.12]	25.4 [1.00]	23.1 [.91]	16.8 [.66]	7.6 [.30]	N/A	16.3 [.64]	1.5 [.06]	1.0 [.04]	135°	90°
228A032	19.3 [.76]	14.2 [.56]	8.2 [.32]	4.1 [.16]	29.5 [1.16]	25.7 [1.01]	19.3 [.76]	8.1 [.32]	14.7 [.58]	16.5 [.65]	2.3 [.09]	1.8 [.07]	135°	90°
228A042	23.9 [.94]	17.8 [.70]	11.7 [.46]	5.6 [.22]	39.6 [1.56]	33.0 [1.30]	21.8 [.86]	9.4 [.37]	16.8 [.66]	20.6 [.81]	2.8 [.11]	1.0 [.04]	135°	90°
228A053	30.0 [1.18]	22.4 [.88]	14.7 [.58]	7.1 [.28]	48.0 [1.89]	38.6 [1.52]	24.6 [.97]	12.4 [.49]	17.8 [.70]	28.4 [1.12]	3.6 [.14]	1.3 [.05]	135°	90°
228A064	37.8 [1.49]	28.2 [1.11]	19.1 [.75]	9.1 [.36]	59.2 [2.33]	49.0 [1.93]	31.5 [1.24]	16.5 [.65]	22.9 [.90]	33.0 [1.30]	4.6 [.18]	1.8 [.07]	135°	90°
228A075	47.0 [1.85]	35.1 [1.38]	35.6 [1.40]	16.3 [.64]	81.3 [3.20]	55.1 [2.17]	35.8 [1.41]	30.5 [1.20]	25.4 [1.00]	58.4 [2.30]	4.6 [.18]	3.0 [.12]	135°	90°
228A086	59.4 [2.34]	44.5 [1.75]	43.7 [1.72]	20.8 [.82]	103.1 [4.06]	73.2 [2.88]	45.2 [1.78]	39.9 [1.57]	31.8 [1.25]	72.6 [2.86]	7.1 [.28]	4.8 [.19]	135°	90°
228A097	81.3 [3.20]	57.2 [2.25]	55.6 [2.19]	26.7 [1.05]	133.6 [5.26]	88.9 [3.50]	53.1 [2.09]	48.3 [1.90]	35.6 [1.40]	86.4 [3.40]	9.4 [.37]	5.6 [.22]	135°	90°

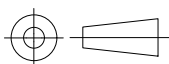
RELEASED FOR PUBLICATION


ALL RIGHTS RESERVED.

THIS DRAWING IS UNPUBLISHED.

COPYRIGHT - TE Connectivity Ltd.

DIMENSIONS: mm [INCHES]	DWN	28JAN2019	MATERIAL	SEE SHEET 2		FINISH	-	
	CHK	28JAN2019	 TE Connectivity Ltd.					
TOLERANCES UNLESS OTHERWISE SPECIFIED:	APVD	28JAN2019						
0 PLC ± -	PRODUCT SPEC	-						
1 PLC ± -	APPLICATION SPEC	-	NAME	BOOT, 90 DEGREE, THICK WALL				
2 PLC ± -	WEIGHT	-	SIZE	CAGE CODE	DRAWING NO	RESTRICTED TO		
3 PLC ± -			A4	00779	C=	228A011-XX-0THRU097-XX-0		
4 PLC ± -			CUSTOMER DRAWING			SCALE	DNS	SHEET 1 OF 2
ANGLES ± -						REV	L	



DIMENSIONS: mm [INCHES]		DWN PRAVEEN N T	28JAN2019		MATERIAL —		FINISH —	
TOLERANCES UNLESS OTHERWISE SPECIFIED:  0 PLC ± — 1 PLC ± — 2 PLC ± — 3 PLC ± — 4 PLC ± — ANGLES ± —		CHK N NAGAR	28JAN2019		 TE Connectivity Ltd.			
		APVD M TAYLOR	28JAN2019					
		PRODUCT SPEC —		NAME BOOT, 90 DEGREE, THICK WALL —				
		APPLICATION SPEC —						
		WEIGHT		SIZE A4	CAGE CODE 00779	DRAWING NO C-228A011-XX-0THRU097-XX-0	RESTRICTED TO —	
CUSTOMER DRAWING		SCALE DNS			SHEET 2 OF 2		REV L	

# Mouser Electronics

Authorized Distributor

Click to View Pricing, Inventory, Delivery & Lifecycle Information:

[TE Connectivity:](#)

[228A032-3-0](#)