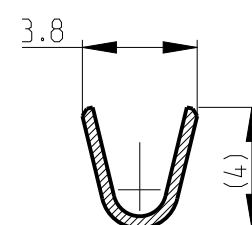
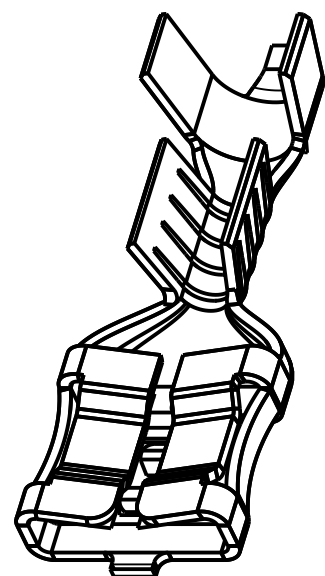
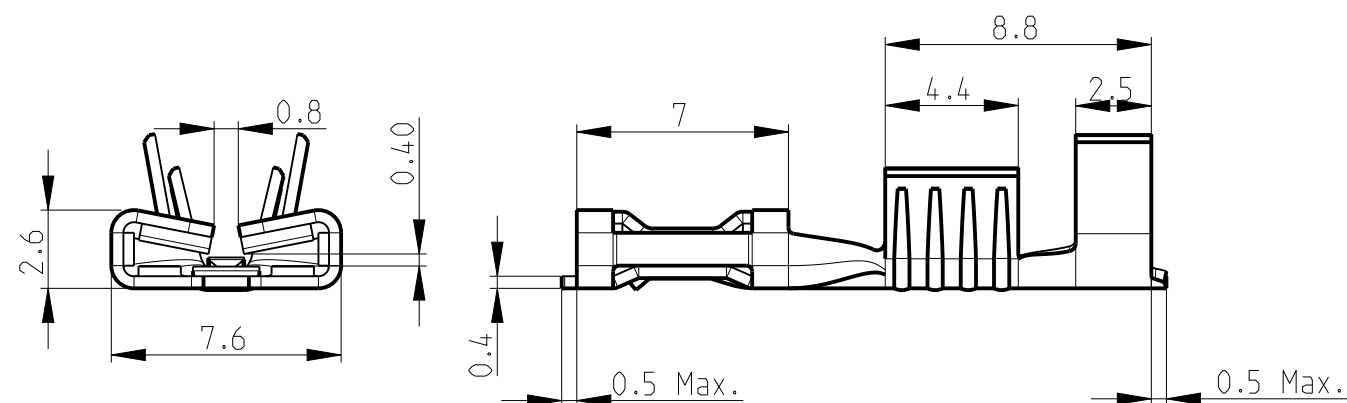
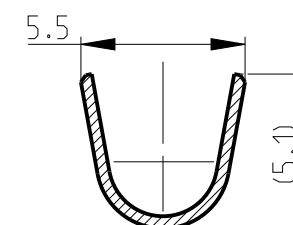


NOTE:



1. CONTINUOUS STRIP ON REELS
2. MATING TAB ACCORDING TO UL310 AND IEC61210 NORM. (WIDTH\*THICKNESS IS 6.3\*0.8mm)
3. WIRE SIZE IS #18-#14 AWG(1.0-2.5 sqmm)
4. INSULATION RANGE IS  $\varnothing$ 3-4.3mm
5. CUT-OFF TAB LENGTH 0.5mm MAX.
6. PRELIMINARY NOT FOR PRODUCTION.
7. APPLICATION FEED LENGTH 21.4mm.


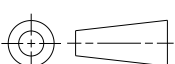


SECTION E-E



SECTION B-B

Pre-Tin Plated	CuNiSi	2178300-3	
Pre-Tin Plated	BRASS	2178300-2	
Pre-NICKEL	Steel	2178300-1	
FINISH	MATERIAL	PART NO.	

THIS DRAWING IS A CONTROLLED DOCUMENT.		DWN VIBHUTHI 29NOV2012		 TE Connectivity	
DIMENSIONS: mm		CHK SUBHASH M 29NOV2012			
TOLERANCES UNLESS OTHERWISE SPECIFIED:		APVD SURESH T N 29NOV2012		NAME 6.3 SRS F-SPRING LIF RECEPTACLE -	
		PRODUCT SPEC 108-64027			
0 PLC ±0.5 1 PLC ±0.5 2 PLC ±0.1 3 PLC ± 4 PLC ± ANGLES ±1°		APPLICATION SPEC 114-64027		SIZE	CAGE CODE
MATERIAL SEE TABLE		FINISH SEE TABLE		DRAWING NO	
		WEIGHT -		RESTRICTED TO	
		Customer Drawing		-	
				SCALE 4:1	SHEET 1 OF 1
				REV	

# Mouser Electronics

Authorized Distributor

Click to View Pricing, Inventory, Delivery & Lifecycle Information:

[TE Connectivity:](#)

[2178300-1 \(Mouser Reel\)](#) [2178300-1 \(Cut Strip\)](#)