

SAFETY ORGANIZATIONS

THIS FILTER HAS BEEN FORMALLY RECOGNIZED, CERTIFIED OR APPROVED BY THE LISTED AGENCY. THEREFORE, ALL TEST/REQUIREMENTS SPECIFIED IN THE LATEST REVISION OF THE FOLLOWING AGENCY STANDARDS HAVE BEEN MET:

UL RECOGNIZED: UL 1283
CSA CERTIFIED: CSA 22.2, # 8
VDE APPROVED: VDE 565-3

OPERATING SPECIFICATIONS

LINE CURRENT/VOLTAGE: 1 AMP, 120/250 VAC,
1 AMP/40°C, 250 VAC

LINE FREQUENCY: 50-60Hz

MAXIMUM LEAKAGE CURRENT,

EACH LINE TO GROUND: 0.22 mA @ 120V 60Hz
0.38 mA @ 250V 50Hz

OPERATING AMBIENT TEMP. RANGE: -10°C TO +40°C @ RATED CURRENT, I_r .

IN AN AMBIENT, T_0 , HIGHER THAN 40°C, THE MAXIMUM OPERATING CURRENT, I_0 , IS AS FOLLOWS:

$$I_0 = I_r \sqrt{\frac{100 - T_0}{60}}$$

RELIABILITY SPECIFICATIONS:

STORAGE TEMPERATURE: -40°C TO +85°C
HUMIDITY: 21 DAYS @ 40°C 95% RH.
CURRENT OVERLOAD TEST: 6 TIMES I_r FOR 8 SECONDS

TEST SPECIFICATIONS:

INDUCTANCE: 10.0 mH NOMINAL
CAPACITANCE: (MEASURED @ 1KHz, 0.250VAC MAX., 25°C±1°C)
LINE TO GROUND: 0.0058 μ F ±20%
LINE TO LINE: 0.0485 μ F ±20%
DISCHARGE RESISTOR: 1.5M Ω
L/G AND L/L I.R.
NO DISCHARGE RESISTOR: 6000M Ω (MIN.) @ 100VDC, 20°C AND 50% RH

RECOMMENDED RECEIVING INSPECTION HIPOT:

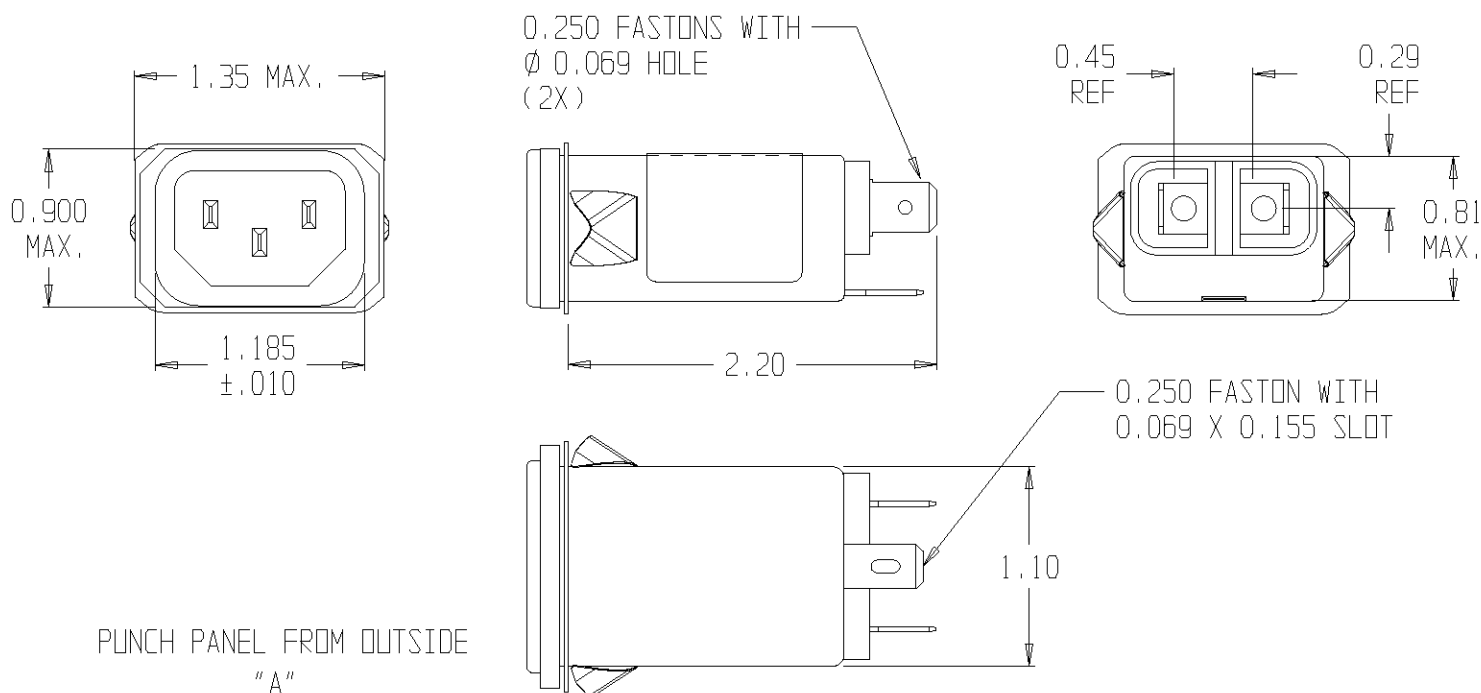
LINE TO GROUND: 1500 VAC OR 2250 VDC FOR 1 MINUTE
LINE TO LINE: 1450 VDC FOR 1 MINUTE

FILTER APPROVAL:

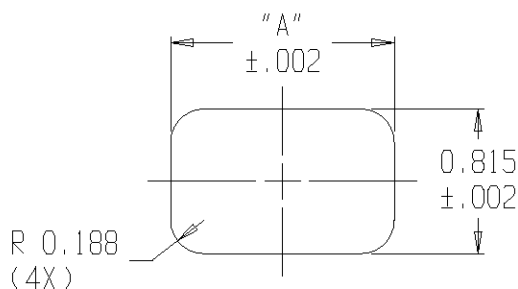
THE BEST WAY TO SELECT AND QUALIFY A FILTER IS FOR YOUR ENGINEERING TO TEST THE UNIT IN YOUR EQUIPMENT.

CATALOG # 1EBS1

| EC | APPROV | DATE |
|---------------|--------|----------|
| 0123 | | 10-15-02 |
| ECO-09-026495 | AEG | 05DEC09 |



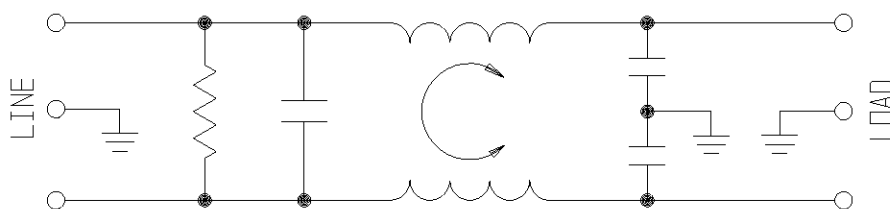
PUNCH PANEL FROM OUTSIDE



PANEL CUTOUT (FRONT MOUNT)

| PANEL THICKNESS | PANEL CUTOUT "A" |
|-----------------|------------------|
| 0.031-0.052 | 1.260 |
| 0.046-0.068 | 1.350 |

⚠ OBSOLETE PARTS: OBSOLETE CIS STREAMLINING PER D.RENAUD/D.SINISI

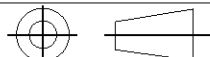


1-6609005-1
1-1609005-1 OBSOLETE **⚠**

50 Ω - 50 Ω (MINIMUM) INSERTION LOSS

| FREQUENCY MHz | .01 | .05 | 0.1 | .15 | 0.5 | 1 | 3 | 5 | 10 | 30 |
|---------------|-----|-----|-----|-----|-----|----|----|----|----|----|
| COMMON dB | 12 | 23 | 29 | 32 | 41 | 47 | - | 47 | 47 | 40 |
| DIFF. dB | | | 1 | 3 | 14 | 23 | 41 | 47 | 50 | 44 |

THIRD ANGLE PROJECTION



UNLESS OTHERWISE SPECIFIED, TOLERANCE TO BE ±.025 MATERIAL & FINISH: AS SUPPLIED

This document is proprietary to CORCOM INC. and is not to be reproduced nor used for manufacturing purposes except on CORCOM'S prior written consent.

corcom
844 E. ROCKLAND RD. LIBERTYVILLE IL 60048

POWER LINE FILTER

| | |
|-------------------------|--------------------|
| CAD FILE: G:\CD\1EBS102 | TYCO # 1-1609005-1 |
| SCALE: NTS | DATE: 8-10-02 |
| DRW. BY: SD | ORIG: ELC |
| CATALOG NO. | REV. |
| 1EBS1 | 3 |

Mouser Electronics

Authorized Distributor

Click to View Pricing, Inventory, Delivery & Lifecycle Information:

[TE Connectivity:](#)

[1-6609005-1](#)