

4

3

2

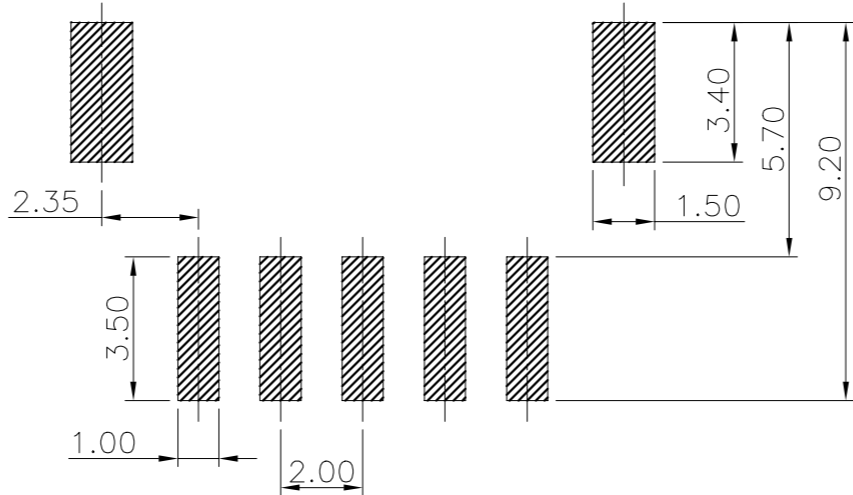
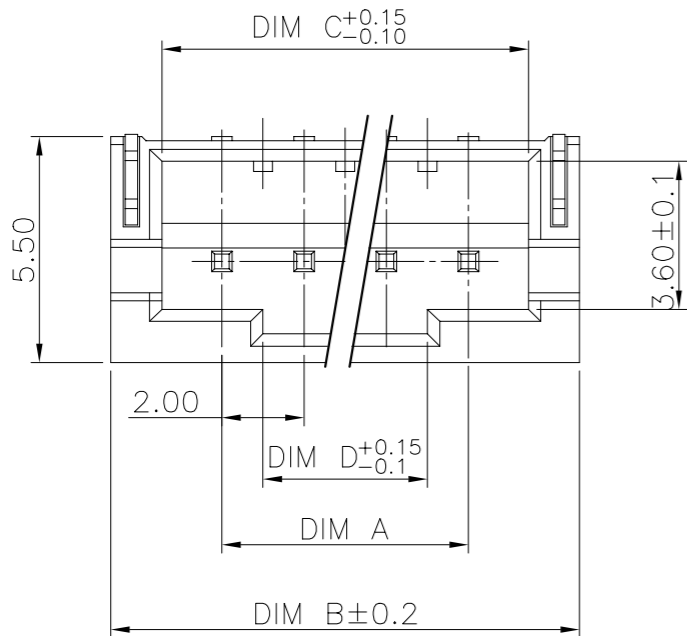
1

THIS DRAWING IS UNPUBLISHED. RELEASED FOR PUBLICATION - , - .
© COPYRIGHT - BY TYCO ELECTRONICS CORPORATION. ALL RIGHTS RESERVED.

LOC	DIST	REVISIONS					
		P	LTR	DESCRIPTION	DATE	DWN	APVD
DW	—		A6	RELEASED (ECR-21-123724)	10DEC21	T.Q	N.S

D

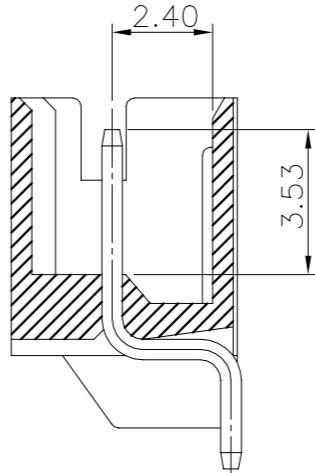
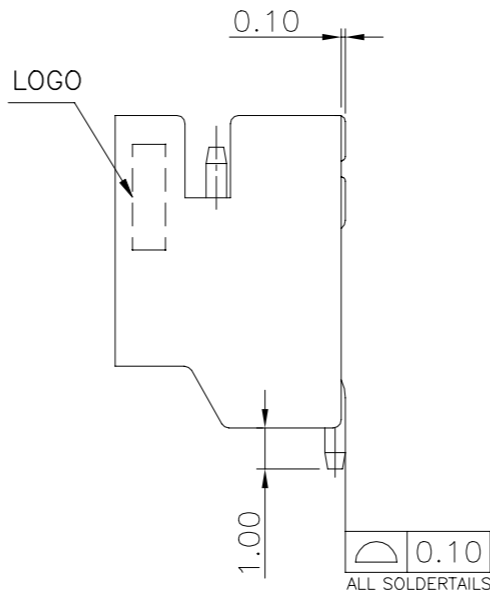
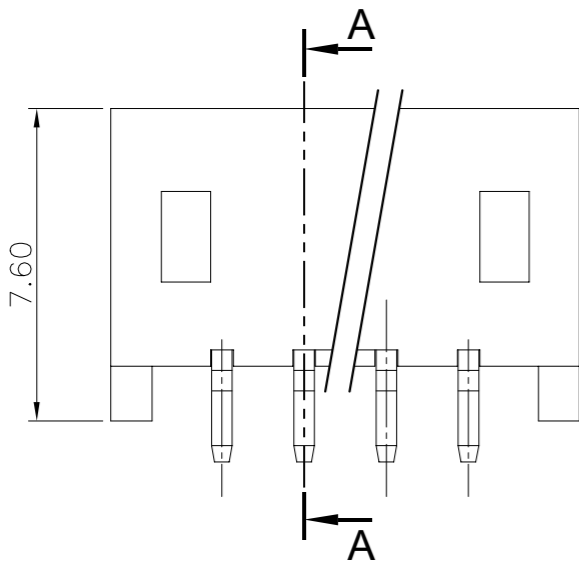
D



RECOMMENDED PCB LAYOUT

C

C



SECTION A-A


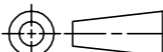
B	28.00	32.90	35.40	30.00	16P	3-1775469-6
	26.00	30.90	33.40	28.00	15P	3-1775469-5
	24.00	28.90	31.40	26.00	14P	3-1775469-4
	22.00	26.90	29.40	24.00	13P	3-1775469-3
	20.00	24.90	27.40	22.00	12P	3-1775469-2
	18.00	22.90	25.40	20.00	11P	3-1775469-1
	16.00	20.90	23.40	18.00	10P	3-1775469-0
	14.00	18.90	21.40	16.00	9P	2-1775469-9
	12.00	16.90	19.40	14.00	8P	2-1775469-8
	10.00	14.90	17.40	12.00	7P	2-1775469-7
	8.00	12.90	15.40	10.00	6P	2-1775469-6
	6.00	10.90	13.40	8.00	5P	2-1775469-5
	4.00	8.90	11.40	6.00	4P	2-1775469-4
	2.00	6.90	9.40	4.00	3P	2-1775469-3
	0.60	4.90	7.40	2.00	2P	2-1775469-2
A	28.00	32.90	35.40	30.00	16P	1-1775469-6
	26.00	30.90	33.40	28.00	15P	1-1775469-5
	24.00	28.90	31.40	26.00	14P	1-1775469-4
	22.00	26.90	29.40	24.00	13P	1-1775469-3
	20.00	24.90	27.40	22.00	12P	1-1775469-2
	18.00	22.90	25.40	20.00	11P	1-1775469-1
	16.00	20.90	23.40	18.00	10P	1-1775469-0
	14.00	18.90	21.40	16.00	9P	1775469-9
	12.00	16.90	19.40	14.00	8P	1775469-8
	10.00	14.90	17.40	12.00	7P	1775469-7
	8.00	12.90	15.40	10.00	6P	1775469-6
	6.00	10.90	13.40	8.00	5P	1775469-5
	4.00	8.90	11.40	6.00	4P	1775469-4
	2.00	6.90	9.40	4.00	3P	1775469-3
	0.60	4.90	7.40	2.00	2P	1775469-2
THICKNESS	DIM D	DIM C	DIM B	DIM A	POS	PART NUMBER

NOTE:

- MATERIAL :
HOUSING : PA9T, UL 94V-0, COLOR: NATURAL.
CONTACT : BRASS, THICKNESS=0.50mm.
- FINISH:
CONTACT : Δ 2 μ m [80u"] MIN. MATTE TIN PLATED OVER
1.27 μ m [50u"] MIN. NICKEL UNDERPLATED ALL OVER.
 Δ GOLD FLASH OVER 1.27 μ m [50u"] MIN. NICKEL UNDERPLATED ALL OVER.
- REFLOW SOLDER CAPABLE TO 260°C PER TE CONNECTIVITY SPEC 109-201, CONDITION B.

A

A

THIS DRAWING IS A CONTROLLED DOCUMENT.		DWN O. HU 01NOV2006		<div>TE Connectivity</div>											
		CHK S. HOU 01NOV2006													
DIMENSIONS: MM		TOLERANCES UNLESS OTHERWISE SPECIFIED:		APVD W.J. KE 01NOV2006		NAME HPI CONN., 2.0MM PITCH, R/A, SMT TYPE									
		0 PLC ± - 1 PLC ± 0.25 2 PLC ± 0.15 3 PLC ± 0.10 4 PLC ± - ANGLES ± 3°		PRODUCT SPEC 108-57100											
				QUALIFICATION TEST REPORT 501-57058											
MATERIAL SEE NOTE		FINISH SEE NOTE		WEIGHT --		SIZE A3		CAGE CODE 00779		DRAWING NO C=1775469		RESTRICTED TO --			
CUSTOMER DRAWING										SCALE --		SHEET 1 of 2		REV A6	

4

3

2

1

THIS DRAWING IS UNPUBLISHED.

RELEASED FOR PUBLICATION

© COPYRIGHT BY TYCO ELECTRONICS CORPORATION. ALL RIGHTS RESERVED.

LOC DIST

REVISIONS

P	LTR	DESCRIPTION	DATE	DWN	APVD
		SEE SHEET 1.			

DIM F

330

165° ~ 180°
PEELING ANGLE

WIDE COVER TAPE AROUND
OUT PERIPHERY 1 TURN

WITHOUT CHARGE
240mm

WITH PRODUCT CHARGE
600PCS/REEL

WITHOUT CHARGE
240mm

4.00

Ø1.50

DIM E

16.00

6.45

PE bag

only for 1-1775469-0

PE bag

341mm(L)*341mm(W)*221mm(H)

THIS DRAWING IS A CONTROLLED DOCUMENT.

DIMENSIONS:
MM

0 PLC

1 PLC

2 PLC

3 PLC

4 PLC

ANGLES

± -

± -

± -

± -

± -

± -

MATERIAL

-

TOLERANCES UNLESS
OTHERWISE SPECIFIED:

± -

± -

± -

± -

± -

± -

FINISH

-

DWN
O. HU
01NOV2006

CHK
S. HOU
01NOV2006

APVD
W.J. KE
01NOV2006

PRODUCT SPEC

APPLICATION SPEC

WEIGHT

CUSTOMER DRAWING

TE Connectivity

HPI CONN., 2.0MM PITCH,
R/A, SMT TYPE

SIZE
A3

CAGE CODE

DRAWING NO
C-1775469

RESTRICTED TO

SCALE

SHEET
2 OF 2

REV
A6

NOTE:

1. PACKAGING MATERIAL IN PLASTIC, RUBBER, INK, PIGMENT AND PAINT
MUST MEET CONTROLLED SUBSTANCES SPEC PER 138-0702.

* CADMIUM AND CADMIUM COMPOUNDS NOT TO EXCEED:
5 PPM.

* LEAD, CADMIUM, CHROM VI AND MERCURY NOT TO EXCEED:
100 PPM (COMBINED).

2. EACH BAG SHALL BE INCLUDED:

* DESICCANT

3. CARRIER TAPES, COVER TAPES, REELS AND TAPED COMPONENTS MUST
MEET THE REQUIREMENTS DEFINED PER EIA-481-B.

4. THE VACUUM PACKING IS FOR 1-1775469-0 ONLY.

58	56	1800	600	16	3-1775469-6
		1800	600	15	3-1775469-5
		1800	600	14	3-1775469-4
		1800	600	13	3-1775469-3
46	44	2400	600	12	3-1775469-2
		2400	600	11	3-1775469-1
		2400	600	10	3-1775469-0
		2400	600	9	2-1775469-9
		2400	600	8	2-1775469-8
34	32	2400	600	7	2-1775469-7
		3000	600	6	2-1775469-6
		3000	600	5	2-1775469-5
		3000	600	4	2-1775469-4
		3000	600	3	2-1775469-3
58	56	3000	600	2	2-1775469-2
		1800	600	16	1-1775469-6
		1800	600	15	1-1775469-5
		1800	600	14	1-1775469-4
		1800	600	13	1-1775469-3
46	44	2400	600	12	1-1775469-2
		2400	600	11	1-1775469-1
		2400	600	10	1-1775469-0
		2400	600	9	1775469-9
		2400	600	8	1775469-8
34	32	2400	600	7	1775469-7
		3000	600	6	1775469-6
		3000	600	5	1775469-5
		3000	600	4	1775469-4
		3000	600	3	1775469-3
		3000	600	2	1775469-2

DIM F	DIM E	PCS/CARTON	PCS/REEL	POS	PART NO.

AMP 1470-19 REV 31MAR2000

Mouser Electronics

Authorized Distributor

Click to View Pricing, Inventory, Delivery & Lifecycle Information:

[TE Connectivity:](#)

[1-1775469-2](#)