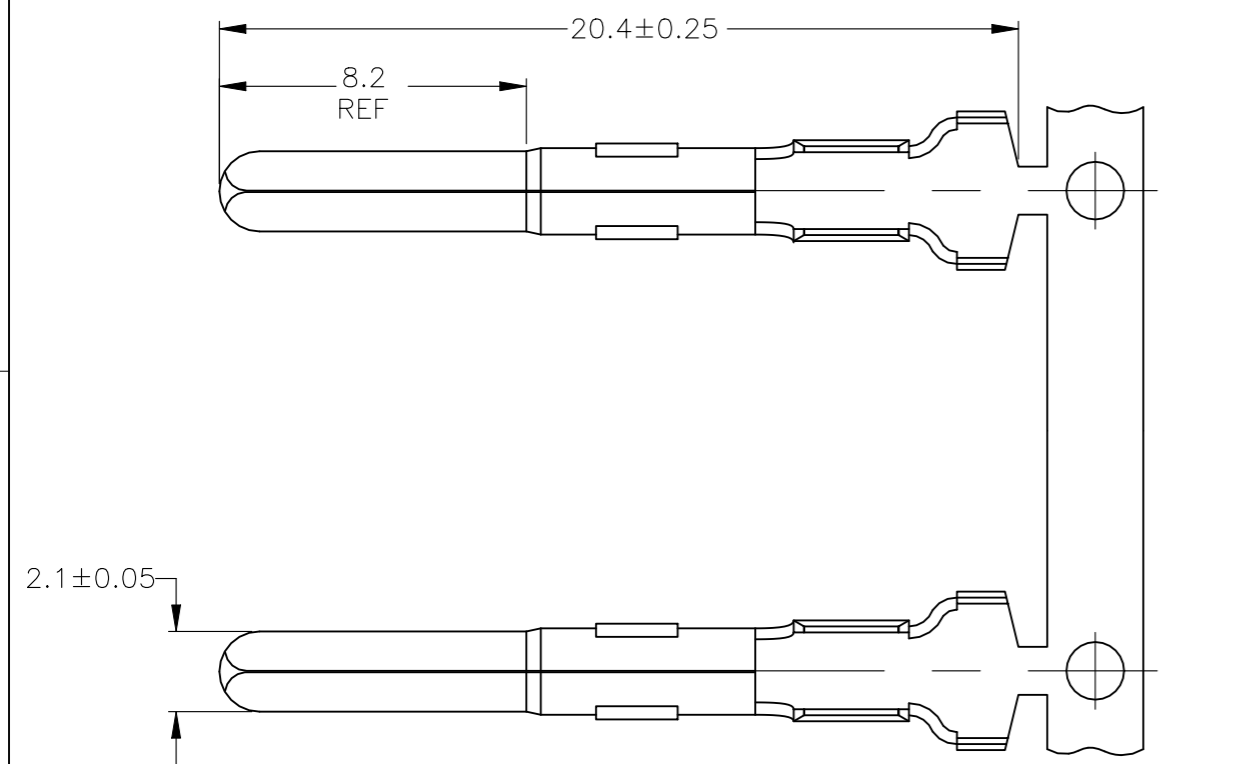
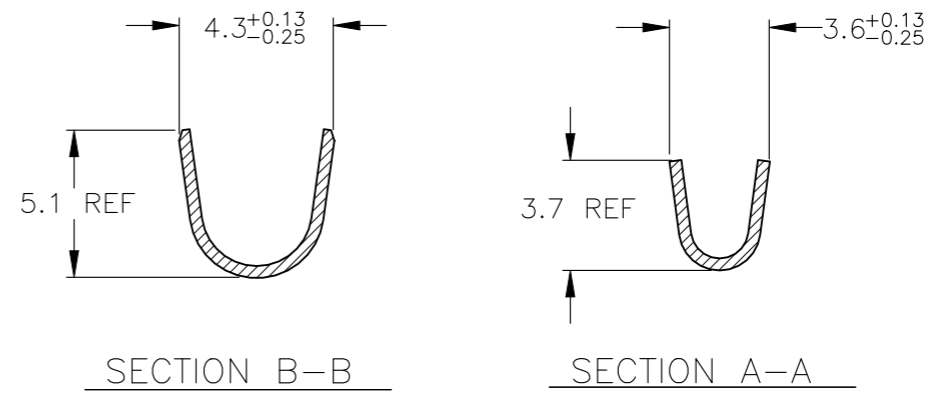


THIS DRAWING IS UNPUBLISHED. RELEASED FOR PUBLICATION  
 © COPYRIGHT - By - ALL RIGHTS RESERVED.

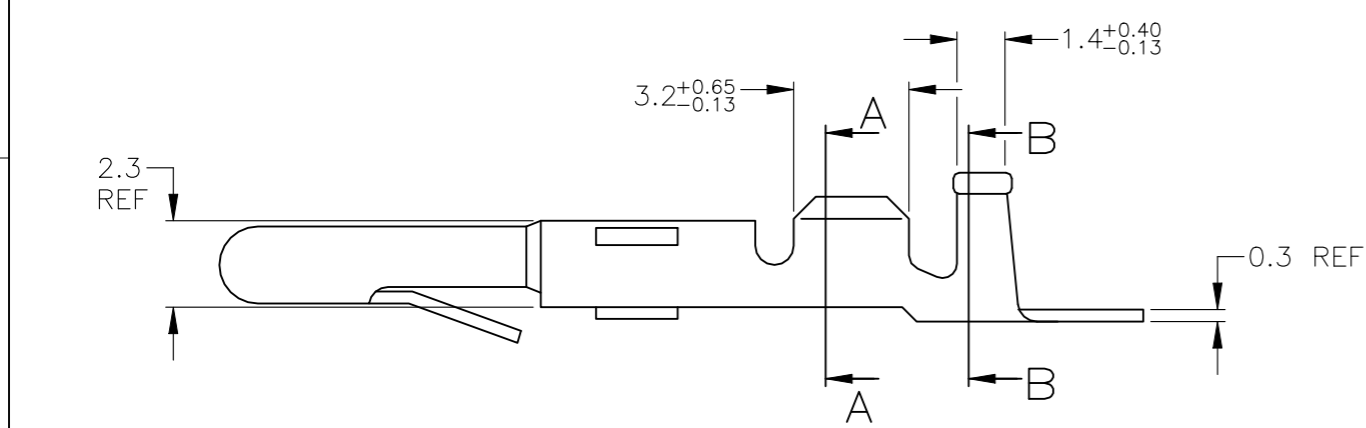
REVISIONS				
P	LTR	DESCRIPTION	DATE	APVD
F3		REVISED PER ECR-18-008156	21JUN2018	JB DZ



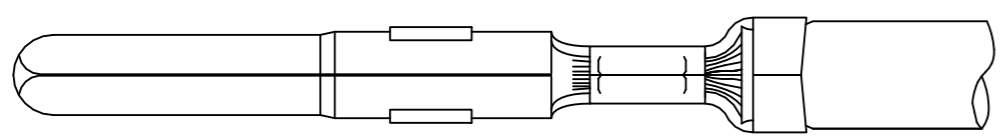
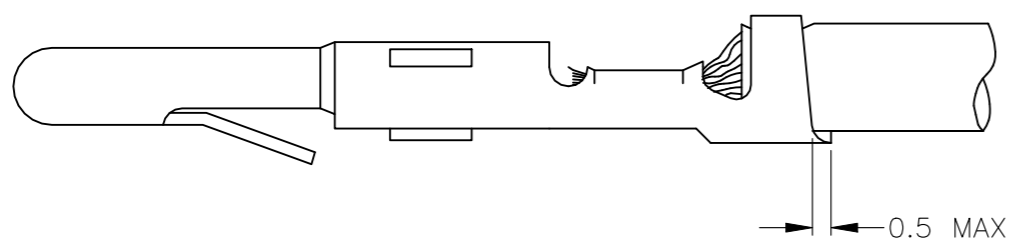
△1 FOR USE ON STANDARD APPLICATORS.(RIGHT-LEFT FEED)  
 △2 FOR USE ON MINIATURE APPLICATORS.(LEFT-RIGHT FEED)



WIRE RANGE :  
1.0-2.5mm<sup>2</sup> AWG  
 INSULATION RANGE  
2.6-3.8mm DIA



	△2	GOLD	BRASS	1-163303-0
	△1	GOLD	PHOSPHOR BR.	163303-9
	△2	PRE-TINPLATED	PHOSPHOR BR.	163303-8
OBSOLETE	△2	UNPLATED	PHOSPHOR BR.	163303-7
	△2	PRE-TINPLATED	BRASS	163303-6
OBSOLETE	△2	UNPLATED	BRASS	163303-5
	△1	PRE-TINPLATED	PHOSPHOR BR.	163303-4
	△1	UNPLATED	PHOSPHOR BR.	163303-3
OBSOLETE	△1	PRE-TINPLATED	BRASS	163303-2
	△1	UNPLATED	BRASS	163303-1
		PLATING	PLATING	MATERIAL PART NUMBER



THIS DRAWING IS A CONTROLLED DOCUMENT.

DIMENSIONS: mm	TOLERANCES UNLESS OTHERWISE SPECIFIED: 0 PLC ± - 1 PLC ± - 2 PLC ± - 3 PLC ± - 4 PLC ± - ANGLES ± -	DWN J.v.LIEMPT 24 OCT 96 CHK A.BIJNEN. APVD M.v.DRIEL PRODUCT SPEC APPLICATION SPEC	TE Connectivity PIN MATE-N-LOK.	
MATERIAL -	FINISH -	WEIGHT 0.000000	SIZE A3	CAGE CODE 00779
		DRAWING NO C-163303		RESTRICTED TO -
		CUSTOMER DRAWING		SCALE - SHEET 1 OF 1 REV F3

# Mouser Electronics

Authorized Distributor

Click to View Pricing, Inventory, Delivery & Lifecycle Information:

[TE Connectivity:](#)

[163303-8](#)