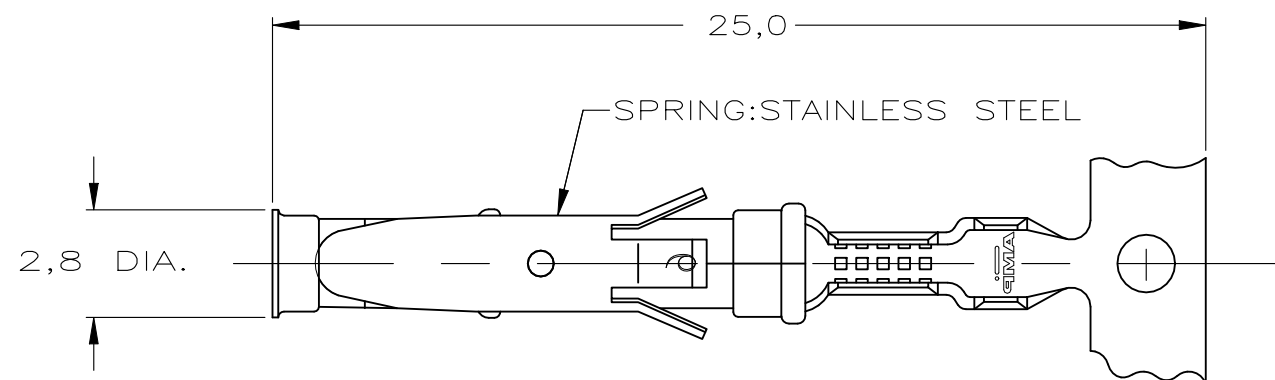
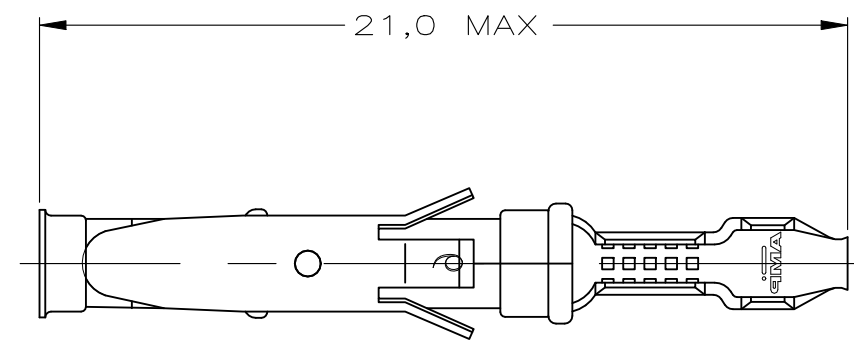


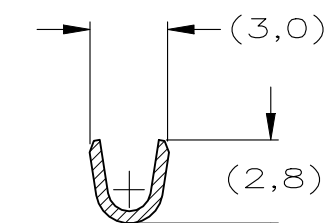
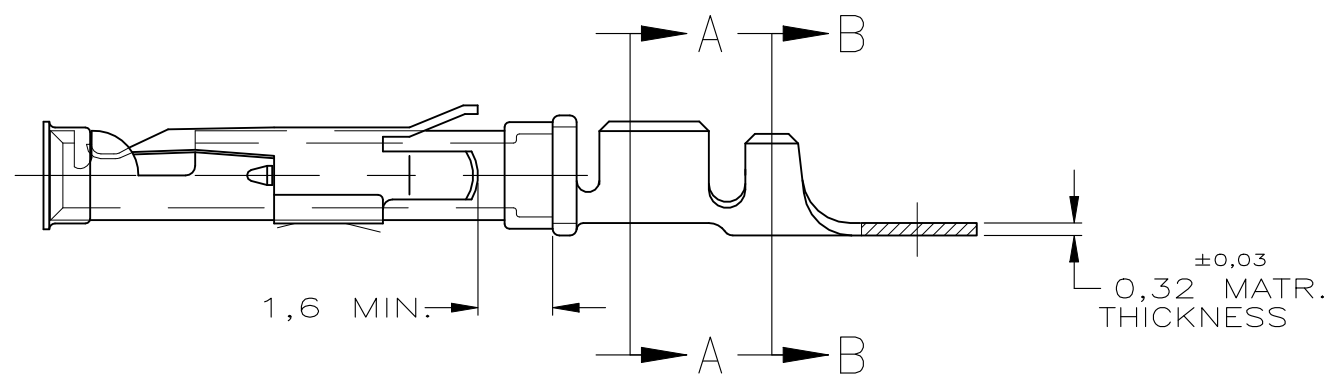
P	LTR	DESCRIPTION	DATE	DWN	APVD
	BA	ECO-21-006957	25JUN2021	RK	MZ



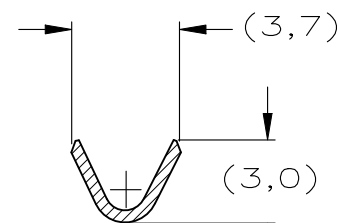
STRIP



LOOSE-PIECE



SECTION A-A



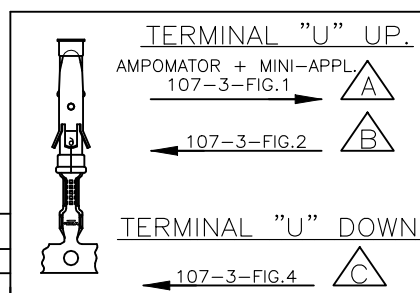
SECTION B-B

WIRE RANGE : 0,75-1,50 mm² (18-16 AWG)
INSUL. RANGE : 2,0-2,5 mm (.080-.100)

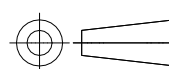
NOTES :

- 1 UL RECOGNIZED UNDER E28476 VOL VI SEC I
2 FOR CRIMP DETAILS SEE SPEC. 114-19000
3 MEETS PRODUCT SPECIFICATION 108-10042
4 SPECIAL REEL WITH 200PCS FOR REEL-FED HAND-TOOL
5 OBSOLETE PARTS: OBSOLETE CIS STREAMLINING PER D.RENAUD/D.SINISI
6 OBSOLETE
7 OMISSION OF 6 CONTACTS MAX PER REEL OF 5000PCS
31 LUBRICATED

NOTES	MATERIAL	THICKNESS	AREA
20	TIN	2,0 μ m	ALL OVER
21	NICKEL GOLD TIN	.76 μ m .76 μ m 1.01 μ m	ALL OVER CONTACT AREA BARREL
22	NICKEL GOLD TIN	1.27 μ m .76 μ m 1.01 μ m	ALL OVER CONTACT AREA BARREL
23	NICKEL GOLD GOLD	1,2 μ m	ALL OVER CONTACT AREA ALL OVER
27	NICKEL SILVER TIN	2,5 μ m	ALL OVER CONTACT AREA BARREL
28	SILVER NICKEL	1,5-2,5 μ m 0,76 μ m	ALL OVER
29	SILVER	2,5 μ m	ALL OVER
30	NICKEL TIN	1,27 μ m 1,27 μ m	ALL OVER ALL OVER



THIS DRAWING IS A CONTROLLED DOCUMENT.

DIMENSIONS:
mm

MATERIAL

REFER TABLE

TOLERANCES UNLESS
OTHERWISE SPECIFIED:

0 PLC \pm -
1 PLC \pm -
2 PLC \pm -
3 PLC \pm -
4 PLC \pm -
ANGLES \pm -
FINISH

REFER TABLE

DWN M THAJUDEEN 21JULY2015
CHK GANI NIMBENNAPPA 21JULY2015
APVD PRASHANTH S 21JULY2015
PRODUCT SPEC
108-10042
APPLICATION SPEC
114-19000
WEIGHT -

CUSTOMER DRAWING

5 OBSOLETE	4 5-163083-3	C	1-163084-4	BRASS	ECON.GOLD	21
	4 5-163083-2	C		BRASS	SEL.GOLD	22
	4 5-163083-1	C		BRASS	EL.TIN	20
	1-163083-4	A	1-163084-4	BRASS	EL.TIN	31 20
5 OBSOLETE	1-163083-3	A	1-163084-3	BRASS	BR.TIN	30
	1-163083-2	A	163084-9	BRASS	SILVER	28
	1-163083-1	A		BRASS	ECON.GOLD	21
	1-163083-0	B	1-163084-0	BRASS	ECON.GOLD	21
	163083-9	B		BRASS	SILVER	28
	163083-8	A		BRASS	EL.TIN	20
	163083-7	A		BRASS	SEL.GOLD	22
1	163083-2	B	163084-2	BRASS	SEL.GOLD	22
1	163083-1	B	163084-1	BRASS	EL.TIN	20
PART NUMBER		DIRECTION OF REEL	LOOSE-PIECE	MATERIAL	PLATING	



TE Connectivity

NAME
TYPE III+, SIZE 16, SOCKET ASS'Y,
18-16 AWG, 2.0-2.5mm DIA INSULATION

SIZE CAGE CODE DRAWING NO RESTRICTED TO
A3 00779 C-163083 -

SCALE 1 OF 1 REV BA

Mouser Electronics

Authorized Distributor

Click to View Pricing, Inventory, Delivery & Lifecycle Information:

[TE Connectivity:](#)

[163083-2](#)