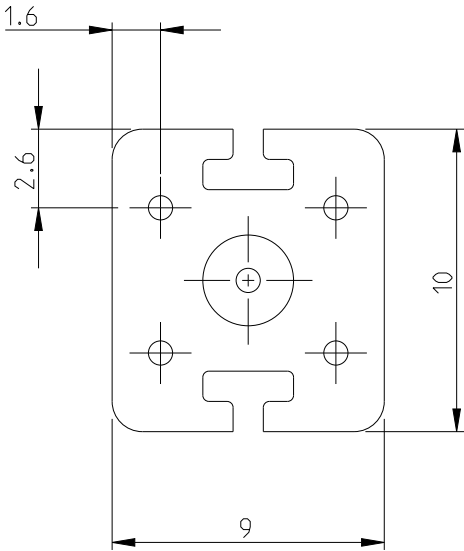
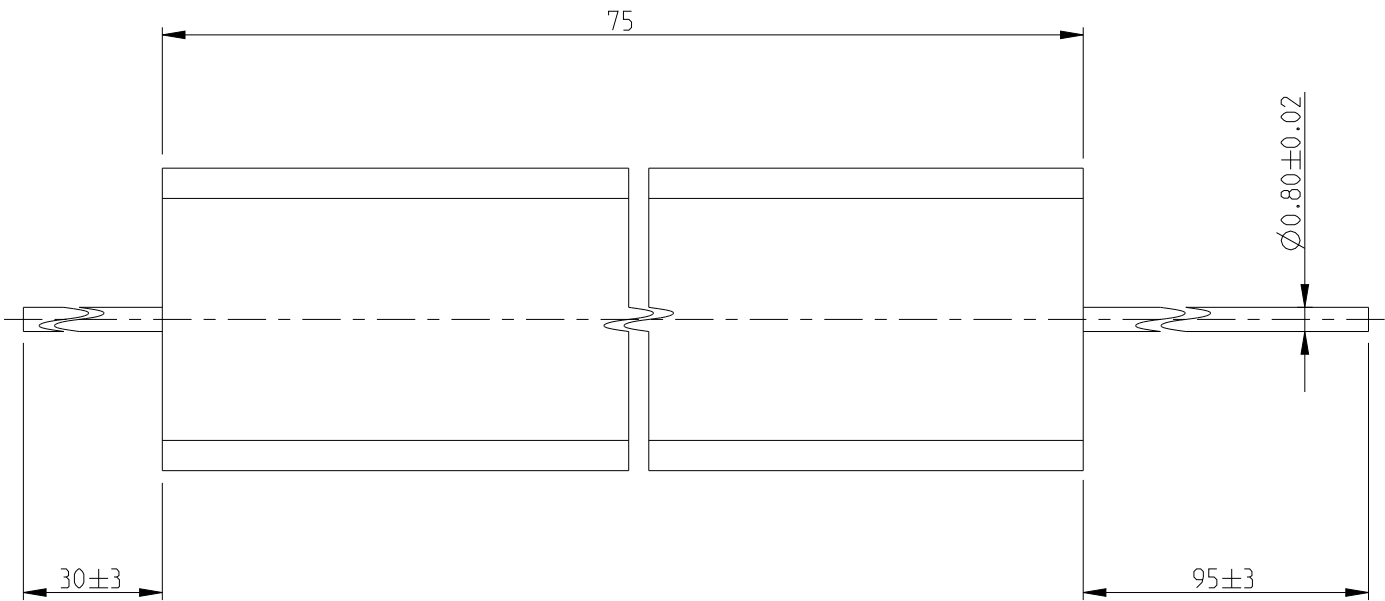


REVISIONS

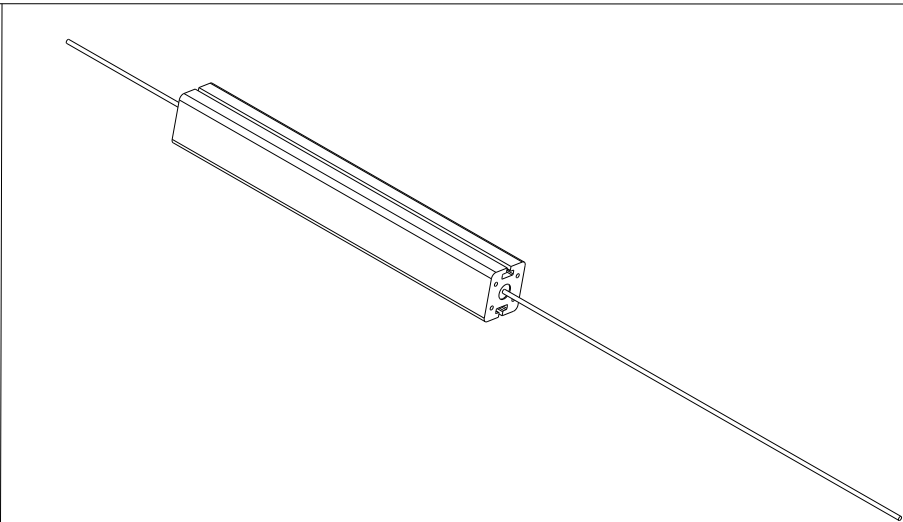
P	LTR	DESCRIPTION	DATE	DWN	APVD
	BA	NEW RELEASE	02AUG2010	PT	St.P
	BA1	CLARIFICATION NOTE ADDED	18APR2022	DM	AP


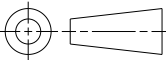


NOTES:

- FOR FURTHER INFORMATION SEE DATA SHEET FOR SERIES TYPE SBC(SQUARE CERAMIC), HIGH POWER RESISTORS
- THE HOLES AND FLUTES SHOWN IN THE CERAMIC CASING ARE PURELY FOR MOUNTING PURPOSES AND DO NOT IN ANY WAY AFFECT THE DISSIPATION CAPABILITIES OF THE RESISTOR. THEY CAN OFTEN BECOME BLOCKED DURING THE MANUFACTURING PROCESS. THIS WILL NOT AFFECT THE PERFORMANCE IN ANY WAY.

RoHS Compliant



THIS DRAWING IS A CONTROLLED DOCUMENT.		DWN 02AUG2010 PARUSURAM.T	<div> TE Connectivity</div> <div>NAME HIGH POWER RESISTOR TYPE SBC (SQUARE CERAMIC) SERIES SBCHE15</div>		
DIMENSIONS: mm	TOLERANCES UNLESS OTHERWISE SPECIFIED:	CHK 02AUG2010 STEPHEN.P			
		APVD 02AUG2010 STEPHEN.P			
		PRODUCT SPEC			
	0 PLC ±0.2	APPLICATION SPEC	SIZE CAGE CODE DRAWING NO RESTRICTED TO		
	1 PLC ±0.1	—			
MATERIAL	2 PLC ±-	—	A3 00779 C-1623729	1 OF 1	REV BA1
	3 PLC ±-	WEIGHT 15g			
	4 PLC ±-	CUSTOMER DRAWING	SCALE 4:1		
	ANGLES ±5°				
	FINISH				
	—				
	—				

Mouser Electronics

Authorized Distributor

Click to View Pricing, Inventory, Delivery & Lifecycle Information:

[TE Connectivity:](#)

[1-1623729-2](#)