

4

3

2

1

THIS DRAWING IS UNPUBLISHED.

RELEASED FOR PUBLICATION

© COPYRIGHT - By - ALL RIGHTS RESERVED.

TE CONNECTIVITY LOGO

3

RATING

2A 250VAC

5A 120VAC

EPOXY SEAL

1

2

3

1.02

[.040]

DATE CODE

04-YEAR

01-WEEK

AND

COUNTRY

OF ORIGIN

6

4.83

[.190]

4.70±0.41

[.185±.016]

FUNCTION

ON

ON

ALCO

8.89

[.350]

1.52

[.060]

12.70

[.500]

11.43

[.450]

FUNCTION CHART

FUNCTION			
01	ON	NONE	ON
03	ON	OFF	ON
05	(ON)	OFF	(ON)
07	ON	OFF	(ON)
08	ON	NONE	(ON)
TERMINALS CONNECTED	2-3, 5-6	---	1-2, 4-5
11	ON	ON	ON
13	ON	ON	(ON)
15	(ON)	ON	(ON)
TERMINALS CONNECTED	2-3, 5-6	2-3, 4-5	1-2, 4-5
SP3T SCHEMATIC (11, 13 & 15 ONLY) NOTE 5			
	IN 2, OUT 6	IN 2, OUT 4	IN 2, OUT 1

NONE: NO MECHANICAL POSITION

OFF: MECHANICAL POSITION WITH NO ELECTRICAL CONNECTION

(ON): MOMENTARY ACTION

SPECIFICATIONS

RATING, B CONTACTS	.4VA MAX @20V MAX. AC OR DC
RATING, G CONTACTS-SEE NOTE 2	.4VA MAX @20V MAX. AC OR DC OR
	5A @120 VAC OR 28 VDC (RESISTIVE)
RATING, Q CONTACTS	2A @250 VAC (RESISTIVE)
	5A @120 VAC OR 28 VDC (RESISTIVE)
ELECTRICAL LIFE	6,000 CYCLES AT RATED LOAD
CONTACT RESISTANCE	10 MILLIOHMS MAX INITIAL @ 2-4VDC, 100MA
INSULATION RESISTANCE	1,000 MEGOHMS MIN
DIELECTRIC WITHSTANDING VOLTAGE	1,000 V RMS AT SEA LEVEL
OPERATING TEMPRATURE	-30C TO 85C

1

ALL MATERIALS AND FINISHES SHALL COMPLY WITH EU DIRECTIVE 2002/95/EC OF 27JAN2003 (ROHS).

2

G CONTACT OPTION CAN BE USED FOR SIGNAL OR POWER LEVEL SWITCHING. IF SWITCH IS USED AT LEVELS EXCEEDING .4VA @ 20V AC/DC, SWITCH IS RENDERED FOR POWER SWITCHING ONLY DUE TO ARC REMOVAL OF GOLD PLATING. RATING MARKED ON THE SWITCH IS 2A 250VAC, 5A 120VAC.

3

TE CONNECTIVITY LOGO PER PER TEC-202-36.

5

SP3T FUNCTION ACHIEVED WITH FUNCTIONS 11, 13, & 15 BY CUSTOMER APPLIED JUMPER BETWEEN TERMINALS 3 & 5.

6

DATE CODE AND COUNTRY OF ORIGIN MAY APPEAR ON EITHER SIDE OF SWITCH.

7

PANEL MOUNT BRACKET SUPPLIED WITH TERMINALS W, Z AND Z3 ONLY.

8

ALL LOGO, RATING, DATE CODE, AND FUNCTION MARKINGS TO BE LASER MARKED.

PART NUMBER SEQUENCE

MODEL	FUNCTION	ACTUATOR	TERMINAL	CONTACT	ACTUATOR COLOR	FRAME COLOR	ROHS
A2							04
	01	J1	A	B	0 BLACK (STD)	0 BLACK (STD)	
	03	J3	AV2	G	1 BROWN	1 BROWN	
	05	J50	C	Q	2 RED	2 RED	
	07	J51	V3		3 ORANGE	3 ORANGE	
	08	J52	V4		4 YELLOW	4 YELLOW	
	11	J2	V7		5 GREEN	5 GREEN	
	13	J4	W		6 BLUE	6 BLUE	
	15	J60	W4		8 GRAY	8 GRAY	
		J61	Z		9 WHITE	9 WHITE	
		J62	Z3				

THIS DRAWING IS A CONTROLLED DOCUMENT.

DWN

M.BINNER

06JAN05

CHK

M.ZITTO

06JAN05

APVD

M.ZITTO

06JAN05

PRODUCT SPEC

APPLICATION SPEC

WEIGHT

CUSTOMER DRAWING

SCALE

2:1

SHEET

1 OF 5

REV

A8

TE Connectivity

NAME

GEMINI A SERIES ROCKER SWITCH

DOUBLE POLE

SIZE

A2

CAGE CODE

00779

DRAWING NO

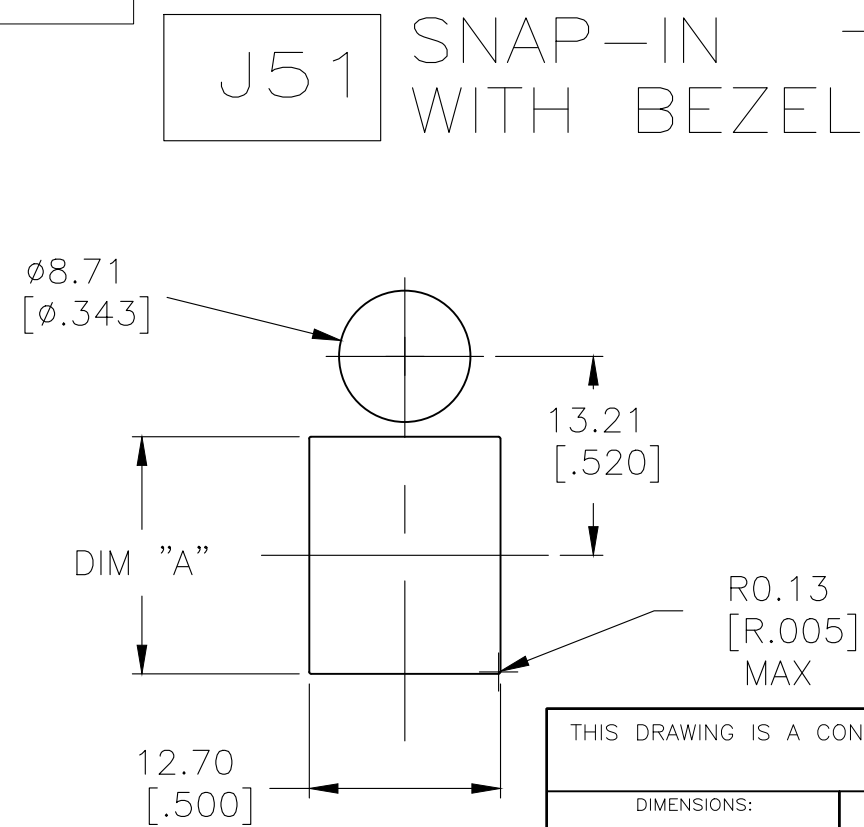
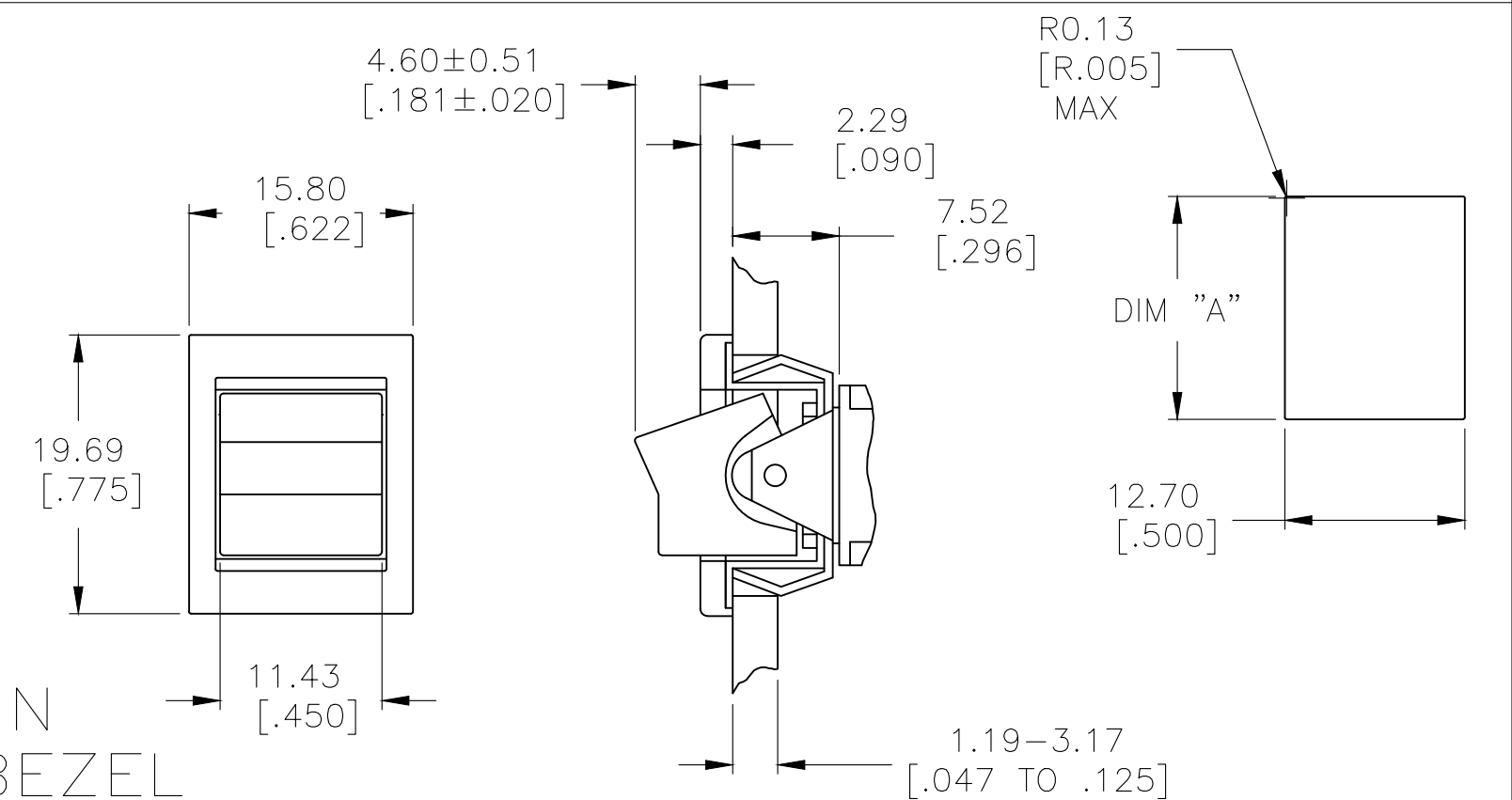
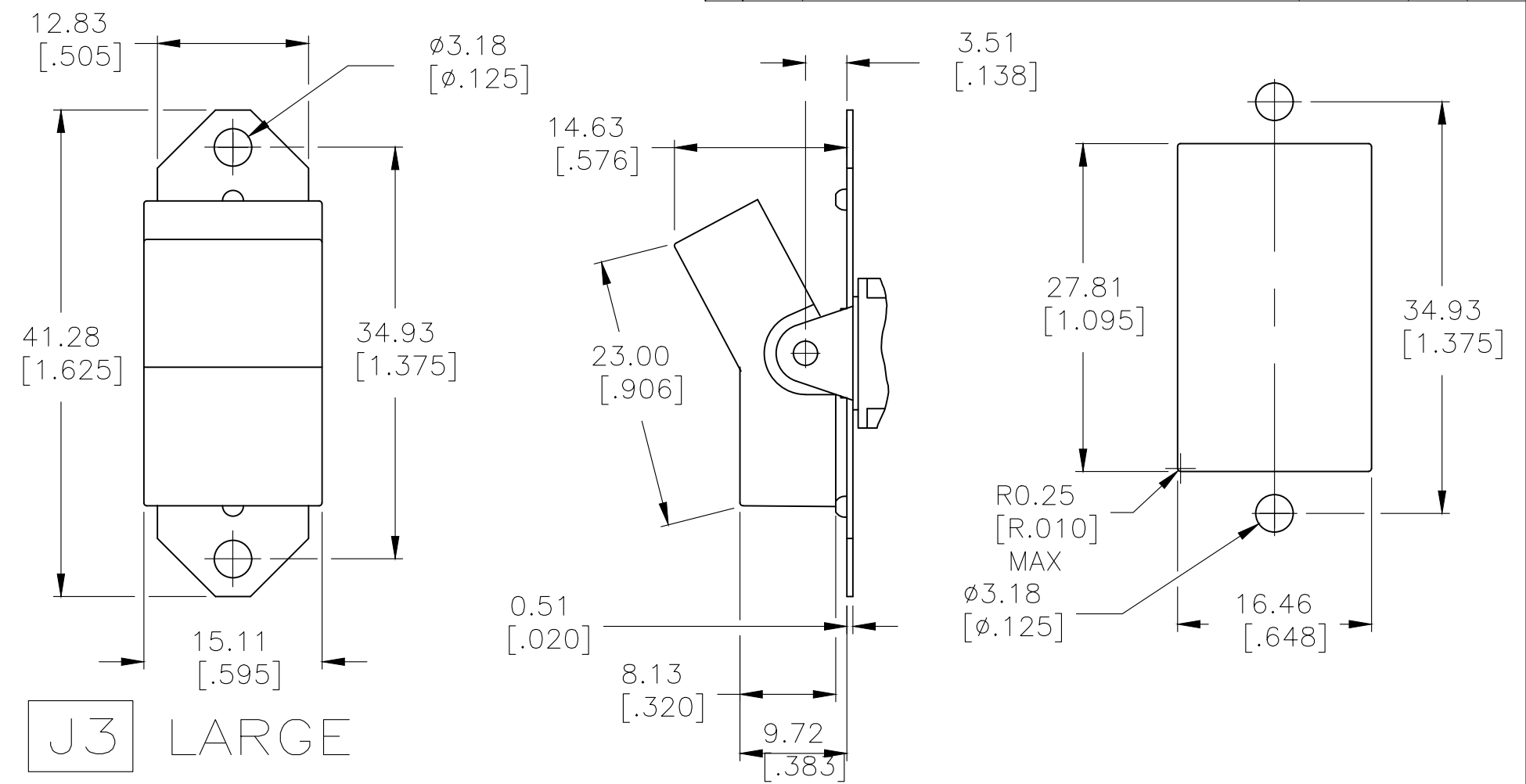
1571987

RESTRICTED TO



---

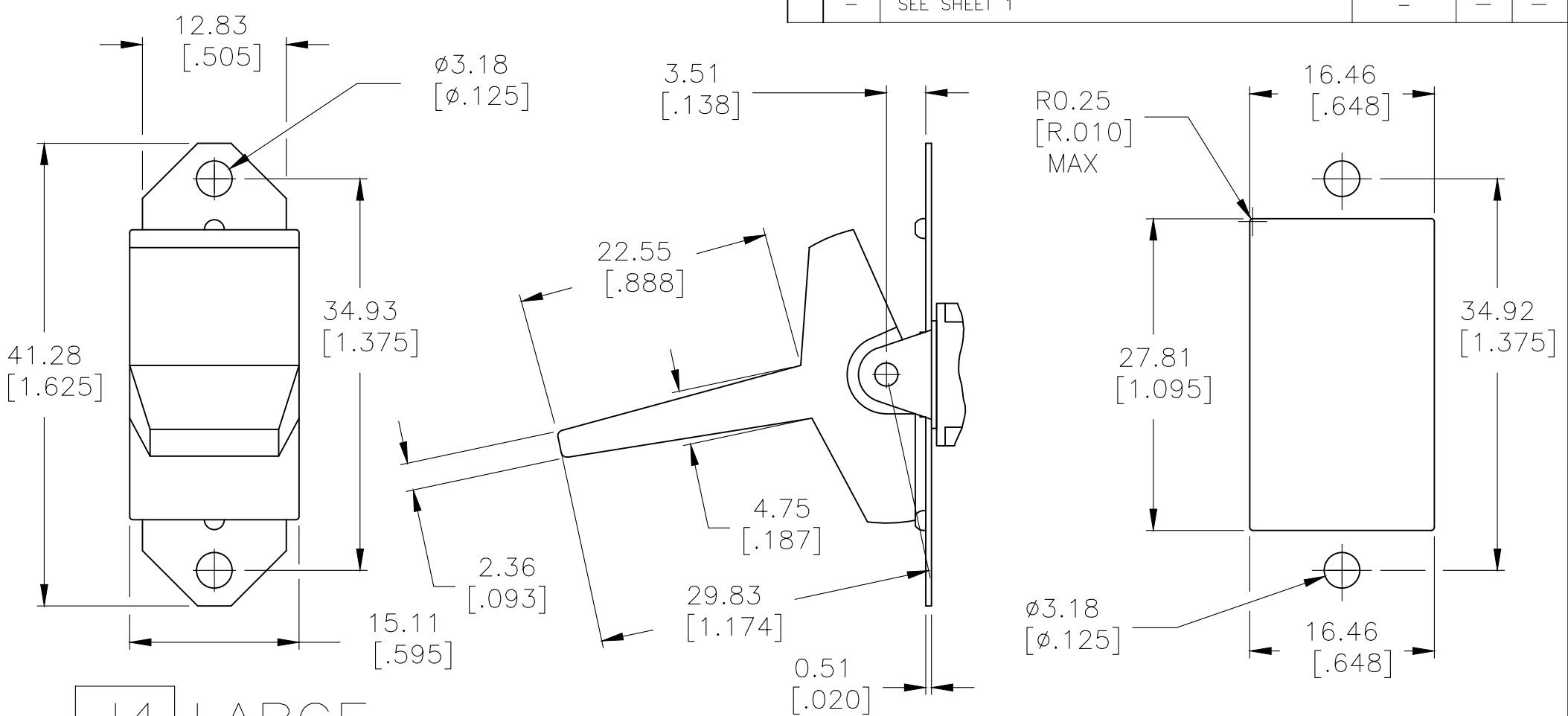
1471-9 (1/15)

1571987

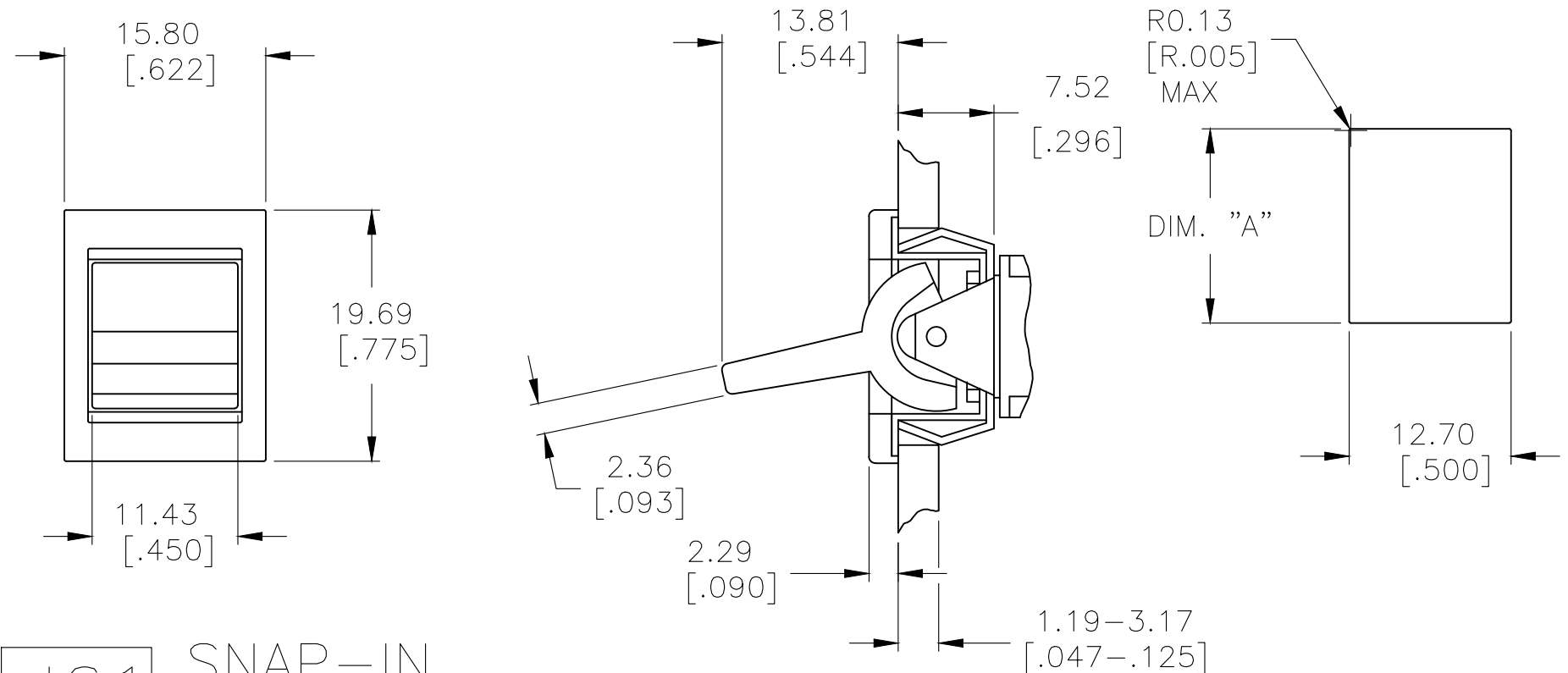


1.52-3.17[.060-.125]	15.75-15.87[.620-.625]
1.19-1.50[.047-.059]	15.72[.619]
PANEL THICKNESS	DIM "A"

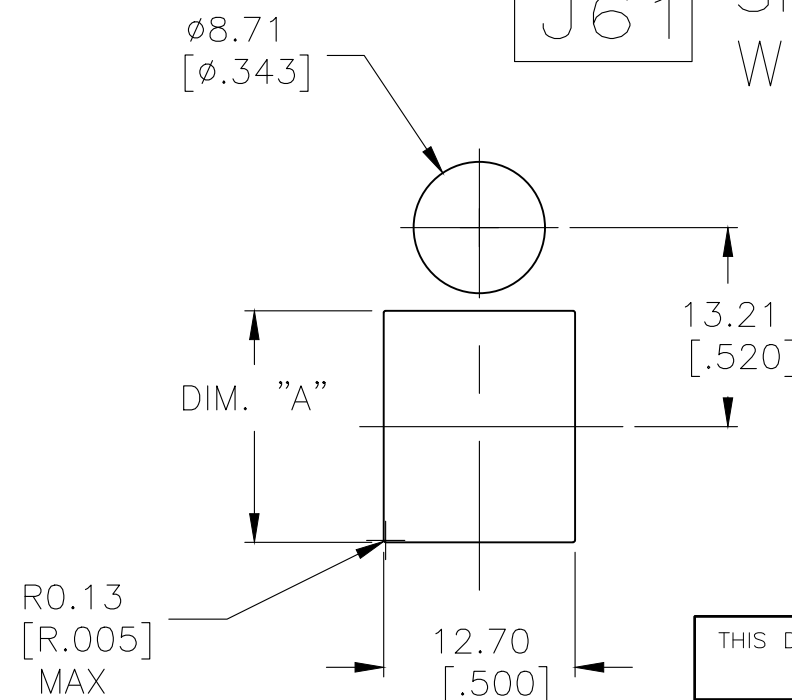
THIS DRAWING IS A CONTROLLED DOCUMENT.		DWN M.BINNER		06JAN05		<div>TE Connectivity</div>			
		CHK M.ZIITO		06JAN05					
DIMENSIONS: mm [INCHES]		TOLERANCES UNLESS OTHERWISE SPECIFIED:		APVD M.ZIITO		06JAN05		NAME	
		0 PLC ± -		PRODUCT SPEC		GEMINI A SERIES ROCKER SWITCH DOUBLE POLE			
		1 PLC ± -		—					
		2 PLC ± -		APPLICATION SPEC					
		3 PLC ± .010		—					
		4 PLC ± 4°		WEIGHT		—		SIZE	
MATERIAL		FINISH		—		A2		CAGE CODE	
—		—		CUSTOMER DRAWING		00779		DRAWING NO	
						C=1571987		RESTRICTED TO	
								—	
								SCALE	
								2:1	
								SHEET	
								2 of 5	
								REV	
								A8	



J4 LARGE





J61 SNAP-IN  
WITH BEZEL

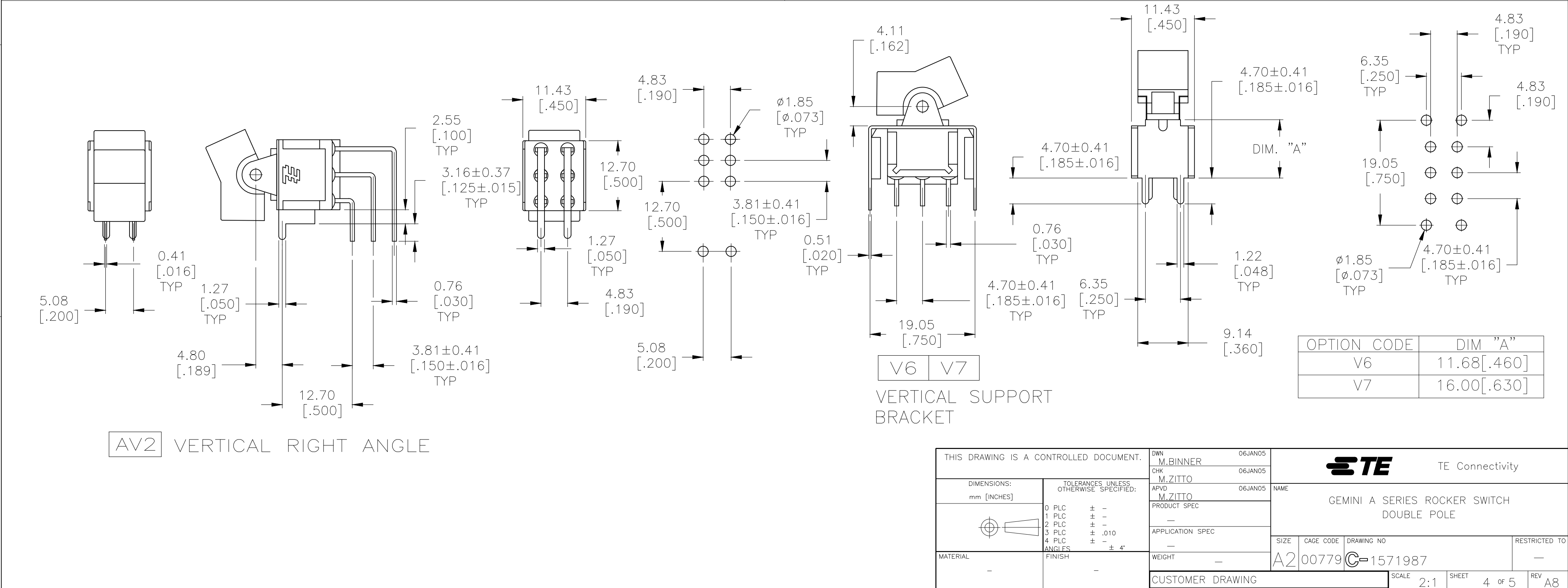
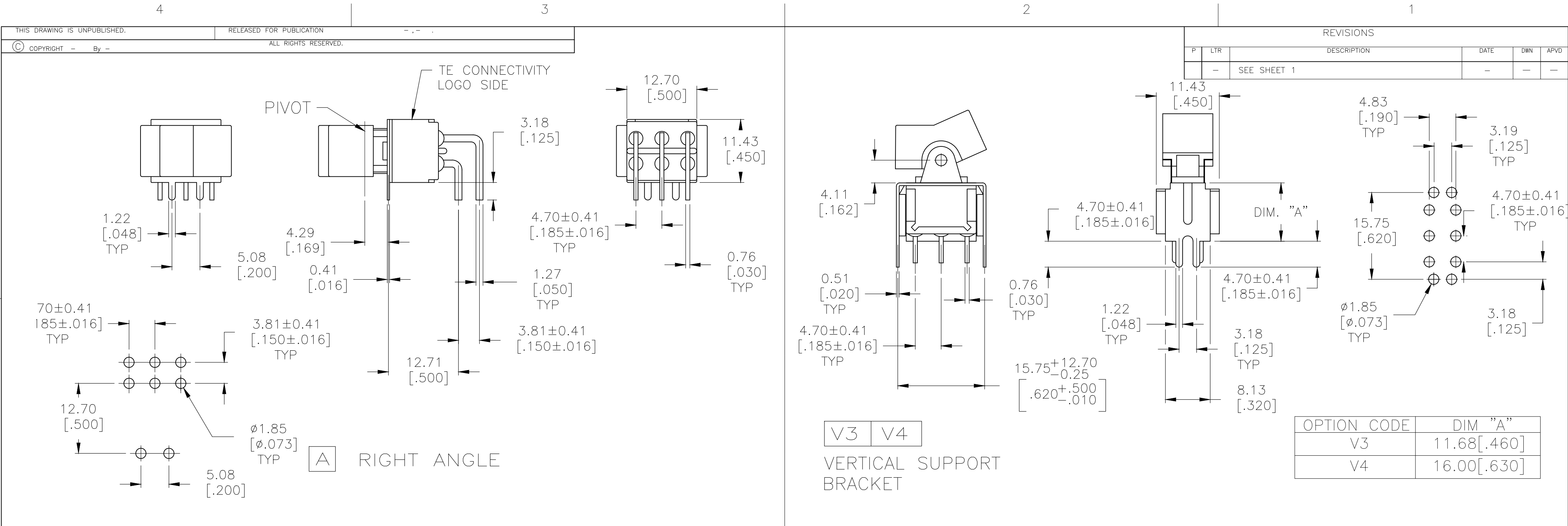


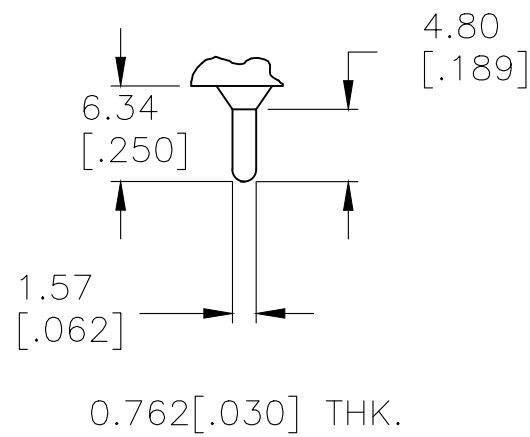
J62 SNAP-IN  
WITH BEZEL/L.E.D.

NOTE: L.E.D. NOT SUPPLIED

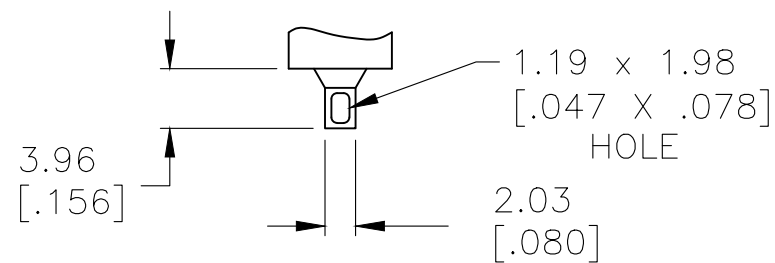
1.52-3.17[.060-.125]	15.75-15.87[.620-.625]
1.19-1.50[.047-.059]	15.72[.619]
PANEL THICKNESS	DIM "A"

THIS DRAWING IS A CONTROLLED DOCUMENT.		DWN M.BINNER 06JAN05 CHK M.ZITTO 06JAN05 APVD M.ZITTO 06JAN05		 TE Connectivity	
DIMENSIONS: mm [INCHES]		TOLERANCES UNLESS OTHERWISE SPECIFIED:			
		PRODUCT SPEC — APPLICATION SPEC —		NAME GEMINI A SERIES ROCKER SWITCH DOUBLE POLE	
MATERIAL —		FINISH —		WEIGHT —	
		CUSTOMER DRAWING		SIZE A2	
		SCALE 2:1		CAGE CODE 00779	
		SHEET 3 of 5		DRAWING NO 1571987	
		REV A8		RESTRICTED TO —	





## Z3 QUICK CONNECT





0.762[.030] THK.

Z WIRE LUG

Z WIRE LUG

OBSOLETE	A213J61ZQ0004	4-1571987-4
	A211J51ZQ0004	4-1571987-3
	A208J61ZQ0004	4-1571987-2
OBSOLETE	A208J51ZQ0004	4-1571987-1
OBSOLETE	A208J1V3Q004	4-1571987-0
OBSOLETE	NOT ASSIGNED	3-1571987-9
	A207J61ZQ0004	3-1571987-8
	A207J51ZQ0004	3-1571987-7
OBSOLETE	A207J3ZQ004	3-1571987-6
OBSOLETE	A207J1ZQ004	3-1571987-5
	A205J61ZQ0004	3-1571987-4
	A205J51ZQ0004	3-1571987-3
	A205J2ZQ004	3-1571987-2
	A205J2CQ004	3-1571987-1
	A205J1ZQ004	3-1571987-0
	A205J1AV2Q004	2-1571987-9
OBSOLETE	NOT ASSIGNED	2-1571987-8
	A203J61ZQ0004	2-1571987-7
	A203J51ZQ0004	2-1571987-6
OBSOLETE	NOT ASSIGNED	2-1571987-5
OBSOLETE	A203J1ZQ004	2-1571987-4
OBSOLETE	NOT ASSIGNED	2-1571987-3
	A203J1CQ204	2-1571987-2
	A203J1AV2Q004	2-1571987-1
	A203J1AQ004	2-1571987-0
	A201J61ZQ0004	1-1571987-9
OBSOLETE	A201J61Z3Q0004	1-1571987-8
OBSOLETE	A201J51ZQ9904	1-1571987-7
OBSOLETE	NOT ASSIGNED	1-1571987-6
	A201J51ZQ0004	1-1571987-5
OBSOLETE	A201J50ZQ004	1-1571987-4
OBSOLETE	A201J50AV2Q804	1-1571987-3
OBSOLETE	A201J50AV2Q004	1-1571987-2
	A201J3ZQ004	1-1571987-1
	A201J3ZB004	1-1571987-0
	A201J2ZQ004	1571987-9
	A201J2CQ004	1571987-8
	A201J1ZQ004	1571987-7
	A201J1V3Q004	1571987-6
	A201J1CQ004	1571987-5
	A201J1AV2Q004	1571987-4
	A201J1AQ204	1571987-3
	A201J1AQ004	1571987-2
OBSOLETE	A211J61Z3Q0004	1571987-1
	ALCO P/N	P/N

THIS DRAWING IS A CONTROLLED DOCUMENT.		DWN M.BINNER		06JAN05		 TE Connectivity							
		CHK M.ZITTO		06JAN05									
DIMENSIONS: mm [INCHES]		TOLERANCES UNLESS OTHERWISE SPECIFIED:		APVD M.ZITTO		06JAN05		NAME					
		0 PLC ± -		PRODUCT SPEC		GEMINI A SERIES ROCKER SWITCH DOUBLE POLE							
		1 PLC ± -		—									
		2 PLC ± -		—									
		3 PLC ± .010		APPLICATION SPEC		SIZECAGE CODEDRAWING NORESTRICTED TO							
		4 PLC ± -		—									
		ANGLES ± 4°											
MATERIAL		FINISH		WEIGHT		A200779		C-1571987					
-		-		-				-					
CUSTOMER DRAWING								SCALE		SHEET		REV	
								2:1		5 of 5		A8	

# Mouser Electronics

Authorized Distributor

Click to View Pricing, Inventory, Delivery & Lifecycle Information:

[TE Connectivity:](#)

[3-1571987-8](#)