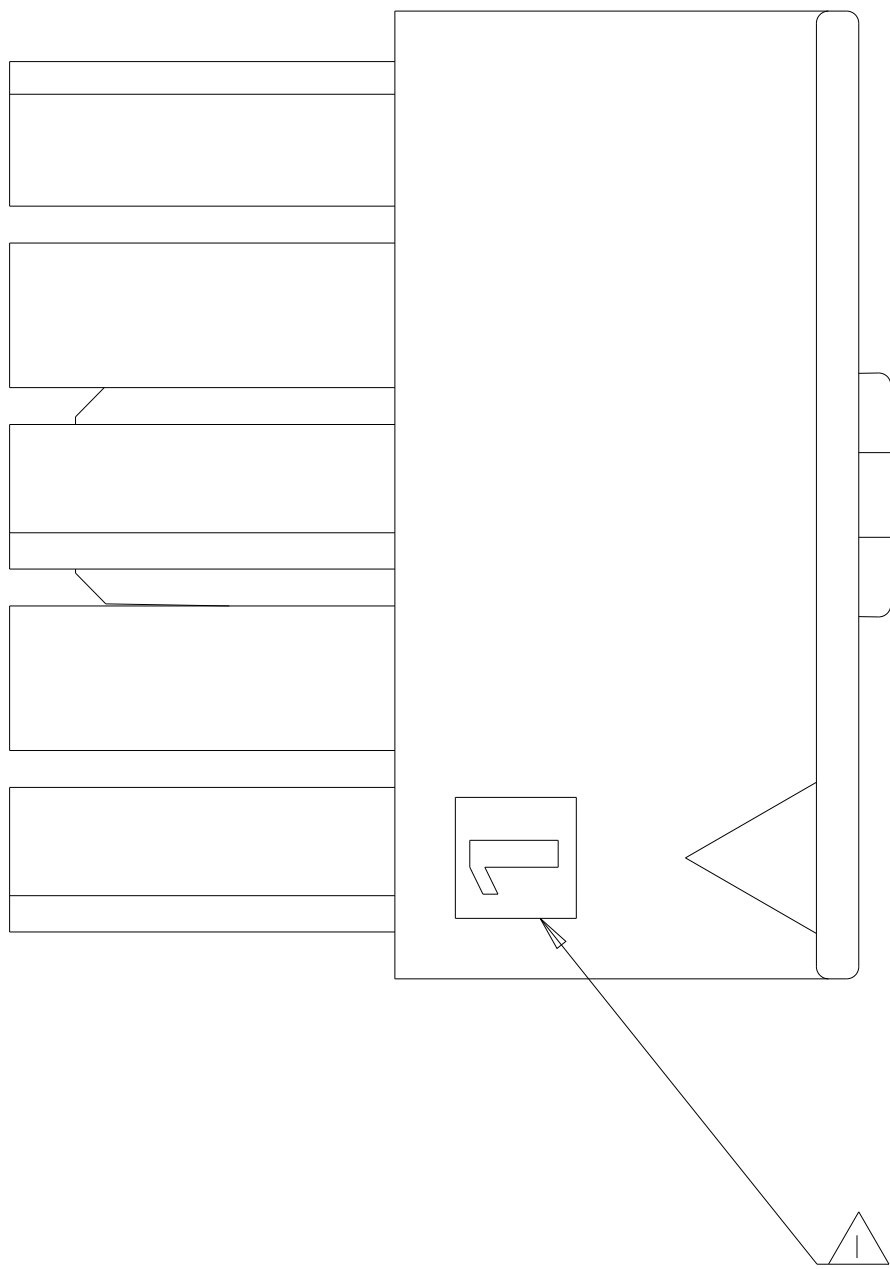
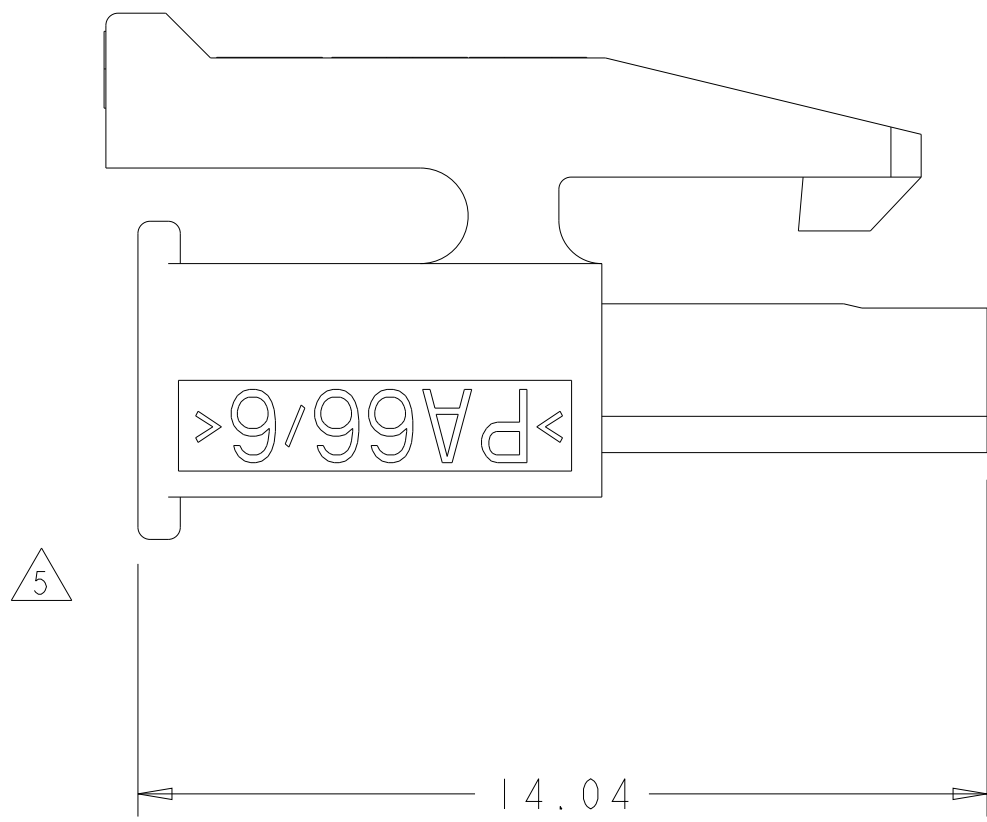
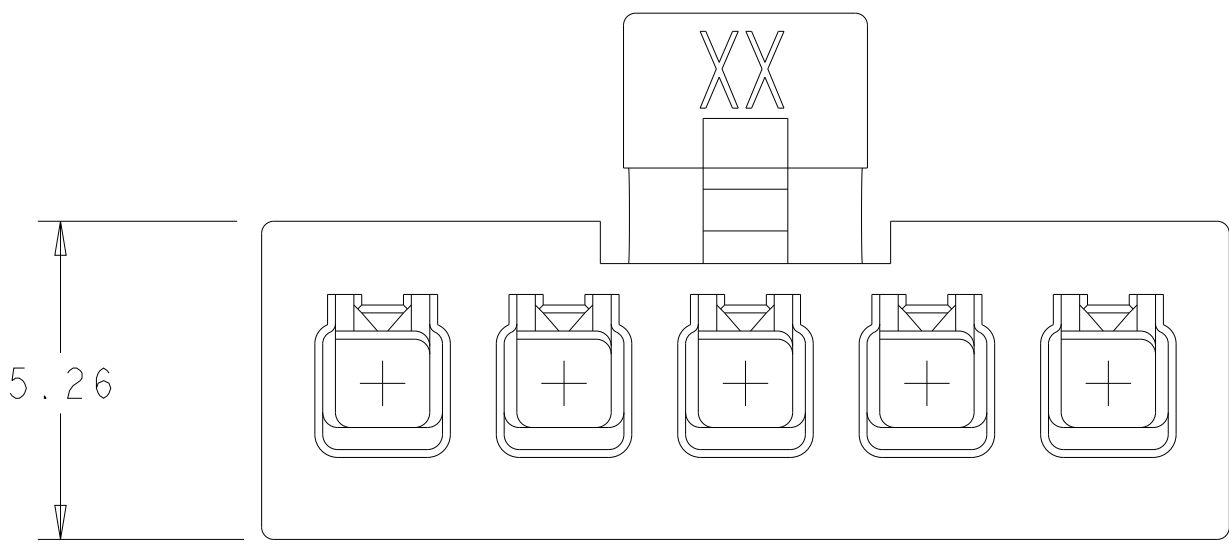
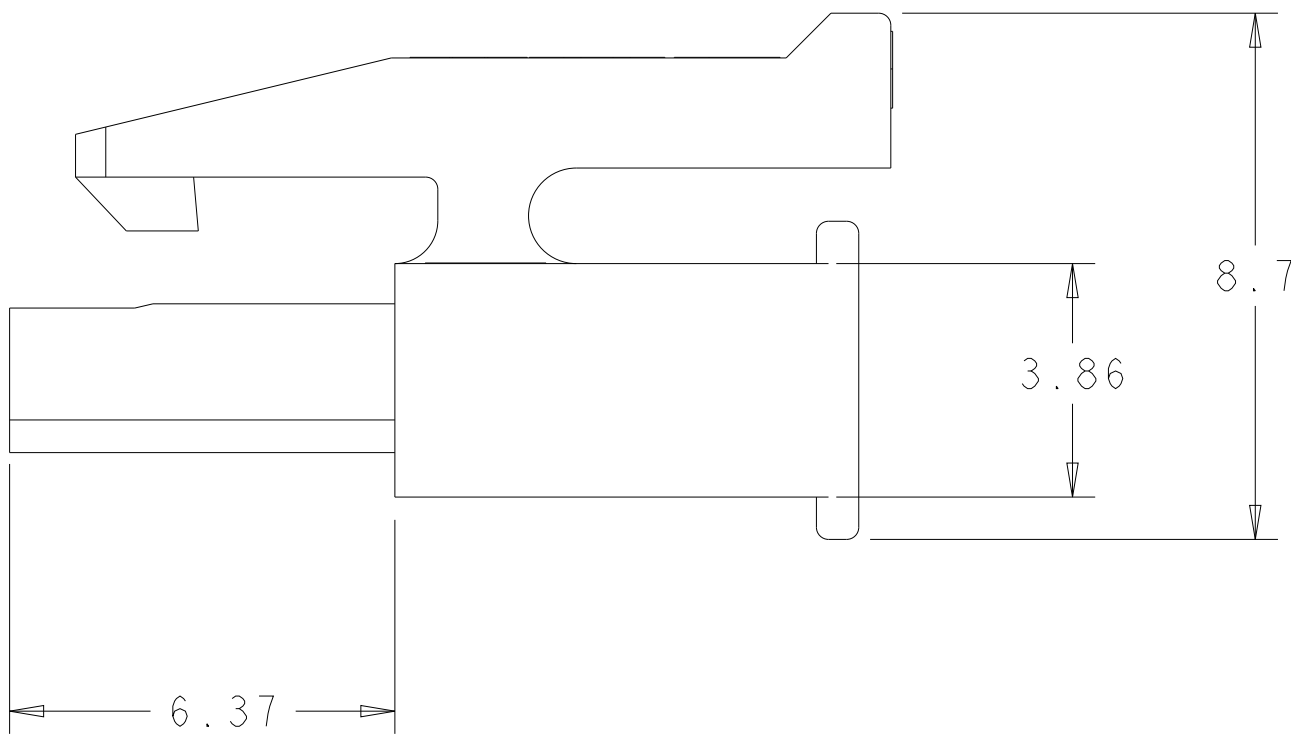
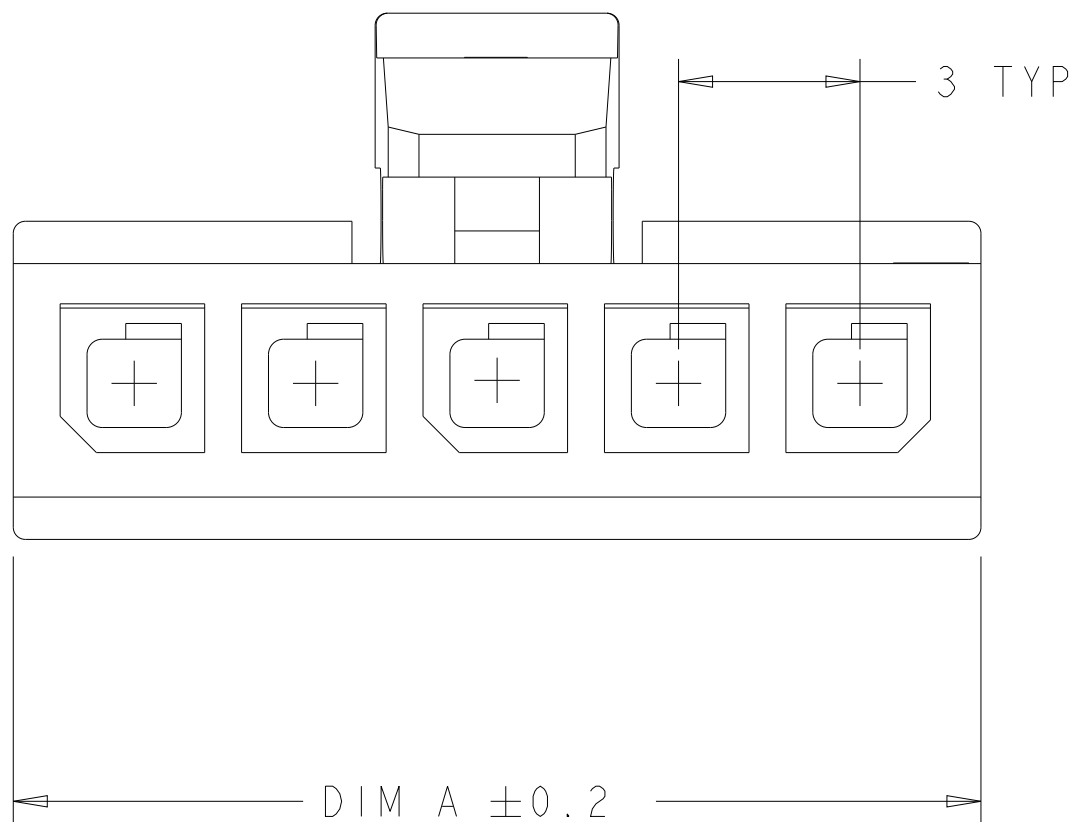


- 1 CIRCUIT 1 IDENTIFIER, LOCATED APPROXIMATELY AS SHOWN.
- 2 LAST CIRCUIT IDENTIFIER, LOCATED APPROXIMATELY AS SHOWN.
- 3 MATERIAL PA66/6 UL94-V0. COLOR - BLACK
- 4 PRELIMINARY MATERIAL PA66 UL94-V0 GW. COLOR - NATURAL
- 5 MATERIAL ID ">PA<" LOCATED IN APPROX AREA SHOWN, APPROX 0.01 HIGH.
- 6 PRELIMINARY PART NUMBER NOT RELEASED FOR PRODUCTION



| | | | |
|----------|----|----|---------------|
| OBSOLETE | 19 | 6 | 2-1445022-6/6 |
| OBSOLETE | 16 | 5 | 2-1445022-5/6 |
| OBSOLETE | 13 | 4 | 2-1445022-4 |
| OBSOLETE | 10 | 3 | 2-1445022-3/6 |
| OBSOLETE | 7 | 2 | 2-1445022-2 |
| 3 | 37 | 12 | 1-1445022-2 |
| | 34 | 11 | 1-1445022-1 |
| | 31 | 10 | 1-1445022-0 |
| | 28 | 9 | 1445022-9 |
| | 25 | 8 | 1445022-8 |
| | 22 | 7 | 1445022-7 |
| | 19 | 6 | 1445022-6 |
| | 16 | 5 | 1445022-5 |
| | 13 | 4 | 1445022-4 |
| | 10 | 3 | 1445022-3 |
| | 7 | 2 | 1445022-2 |

| | | | |
|--------|-------|-------------|----------|
| REMARK | DIM A | NO. OF POS. | PART NO. |
|--------|-------|-------------|----------|

| | | | | | |
|----------------------------------------|--|--------------------------------------------------------------------------------|-------------------------------------|-----------------------------------------------------------|--|
| THIS DRAWING IS A CONTROLLED DOCUMENT. | | DWN R. WHITAKER CHK C. JONES APPD C. JONES | 14AUG2001 14AUG2001 14AUG2001 | TE Connectivity | |
| DIMENSIONS: | | TOLERANCES UNLESS OTHERWISE SPECIFIED: | | NAME | |
| mm | | 0 PLC ±.26 1 PLC ±0.26 2 PLC ±0.26 3 PLC ±. 4 PLC ±. ANGLES ±1° | | PRODUCT SPEC 108-1836 APPLICATION SPEC 114-13000 | |
| MATERIAL SEE TABLE | | WEIGHT - | | SIZE A100779 | |
| | | CUSTOMER DRAWING | | CAGE CODE 1445022 | |
| | | | | RESTRICTED TO - | |
| | | | | SCALE 8:1 | |
| | | | | SHEET 1 | |
| | | | | OF 1 | |
| | | | | REV D5 | |

Mouser Electronics

Authorized Distributor

Click to View Pricing, Inventory, Delivery & Lifecycle Information:

[TE Connectivity:](#)

[1-1445022-1](#)