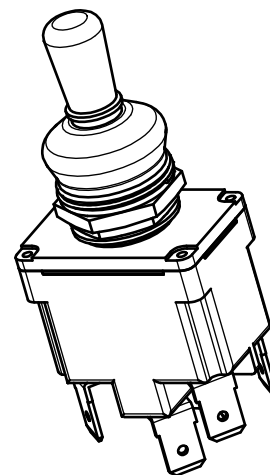
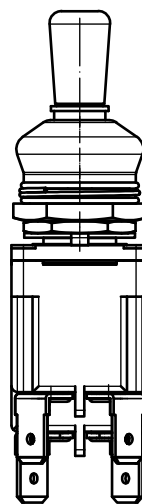
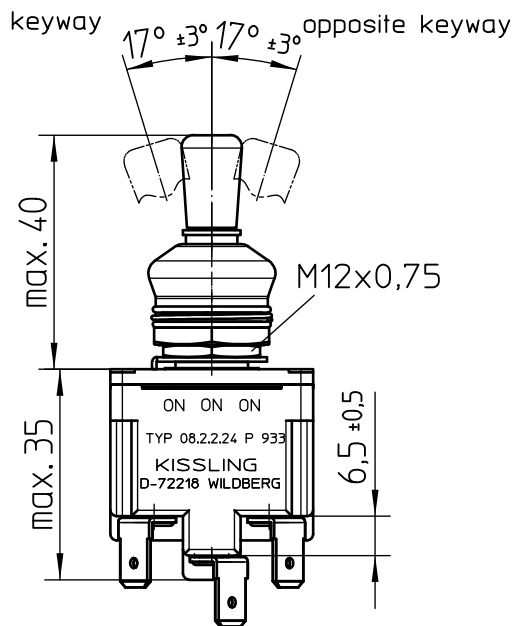
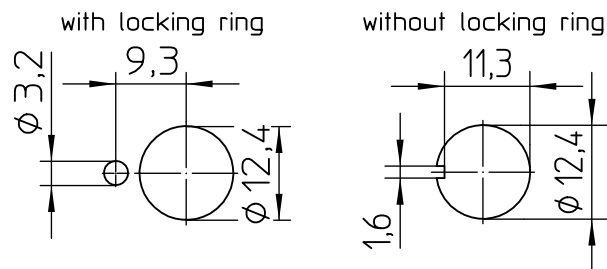


## Mounting Detail



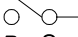
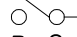
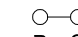
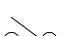


## Construction

|                           |                            |
|---------------------------|----------------------------|
| Material, Casing .....    | Duroplast GF               |
| Material, Cover .....     | GD-ZnAl4Cu1                |
| Connentions .....         | Faston DIN 46 244-A6,3-0,8 |
| Protection Interior ..... | IP 6K5 DIN 40 050 Blatt 9  |
| Connections .....         | IP 00 DIN 40 050 Blatt 9   |

## Mechanic Data

|   |                    |
|---|--------------------|
| Current carrying parts .....                    | CuZn-Legierungen   |
| Contacts .....                                  | Ag                 |
| Ambient Temperatur Range .....                  | -35°C bis +60°C    |
| Storage Temperatur Range .....                  | -35°C bis +80°C    |
| Life Cycle iam VG 95 210 Part 21, grade H ..... | 100,000 operations |

### Circuit Diagram

|       | Circuitry made with toggle at   |   |   |
|-------|---|---|---|
|       | keyway  | center  | opposite keyway   |
| Pol 1 |  |  |  |
| Pol 2 |  |  |  |

## Electrical Data

|  |                             |      |
|--|-----------------------------|------|
| Voltage                                    |                             |      |
| 28 V DC ohmic Load .....                   |                             | 18 A |
| 28 V DC inductive Load ... at L/R = 5ms    |                             | 10 A |
| 28 V DC lamp Load .....                    |                             | 5 A  |
| 115 V AC ohmic Load .....                  |                             | 15 A |
| 115 V AC inductive Load..... cos.φ = 0,75; |                             | 15 A |
| 115 V AC lamp Load .....                   |                             | 4 A  |
| Motor Load .....                           | utilisation category AC3    | 5 A  |
|  | (see DIN VDE 0660 Teil 107) |      |
| Min. Rating .....                          | 12 V DC, 20 mA              |      |

## Actuation

locking keyway side  
locking center position  
momentary opposite keyway side

## Locking Configuration

locked keyway side  
locked between center position  
and keyway side  
locked out opposite keyway side

It is recommended to use gold-plated contacts for lower currents or voltages.

# Mouser Electronics

Authorized Distributor

Click to View Pricing, Inventory, Delivery & Lifecycle Information:

[TE Connectivity:](#)

[08-2-2-24-P-933](#)