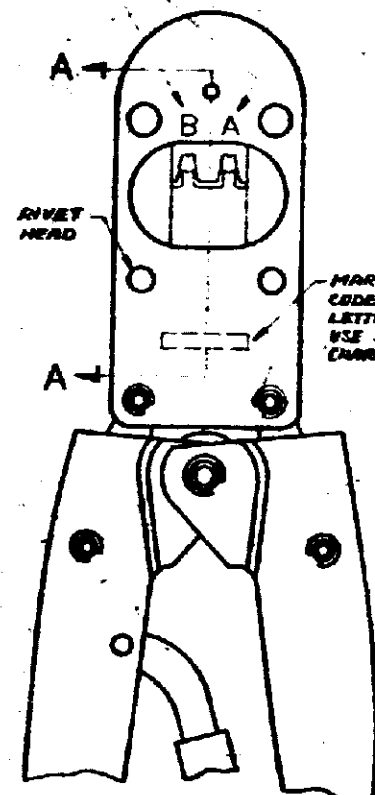
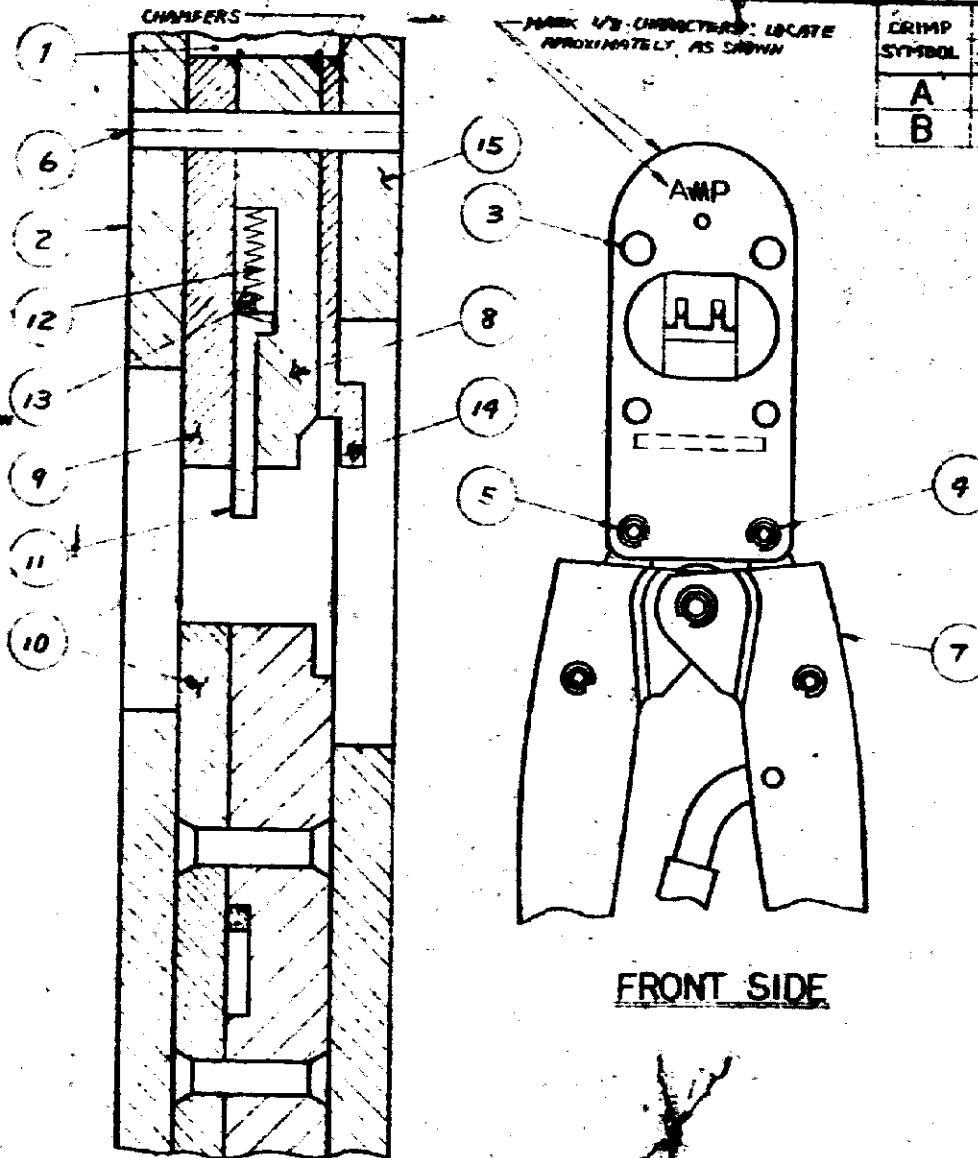


USED ON
170370



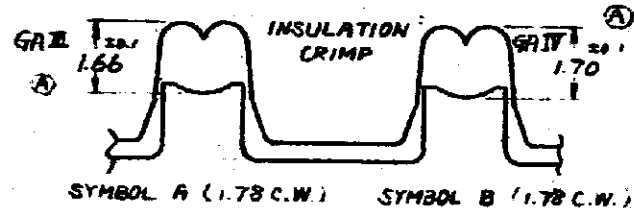
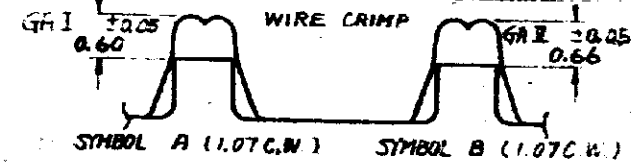
REAR SIDE



FRONT SIDE

SECTION A-A

CRIMP SYMBOL	TERMINAL STRIP NO.	WIRE RANGE	INS. RANGE	TERM. SPECS.	IS NO.	HANDLE FORCE	CODE	BASE NO.
A	170370	1.0-1.3	1.0-1.3	14-5051 15-0943	14-20		GAI	289016-138
B	170370	1.2-1.5	1.2-1.5	14-5051 15-0943			GAI	289016-138



1	125072-3	PLATE - SIDE (LARGE WINDOW)	15
1	722565-3	SUPPORT UPPER	14
2	125145-1	EJECTER	13
2	305182	SPRING	12
1	724666-1	LOCATOR	11
1	724664-1	SUBASSY - ANVIL	10
1	724665-1	INSERT - UPPER INSULATION	9
1	722562-3	INSERT - UPPER WIRE	8
1	125005-6	SUBASSY - HANDLE	7
1	21028-5	PIN - ROLL	6
4	720660-3	RING - RETAINING	5
2	304553	PIN - RETAINING	4
4	304555-2	PIVOT	3
1	125072-4	PLATE - SIDE (SMALL WINDOW)	2
1	304569-2	HEAD - U	1

THIS INFORMATION IS CONFIDENTIAL AND IS TO BE KEPT AS SUCH. IT IS TO BE CONTAINED IN THE FILES OF THE PROJECT AND NOT TO BE RELEASED WITHOUT THE AUTHORIZATION OF THE PROJECT MANAGER.

170370

REV	DATE	BY	DESCRIPTION
B			ADD TERM. SPEC
A			REVISED 1.66 1.70 WIRE RANGE
0			RELEASED

DESCRIPTION	SCALE	NAME	DATE
STRAIGHT ACTION HAND TOOL ASS'Y	1-1		

Mouser Electronics

Authorized Distributor

Click to View Pricing, Inventory, Delivery & Lifecycle Information:

[TE Connectivity:](#)

[724663-1](#)