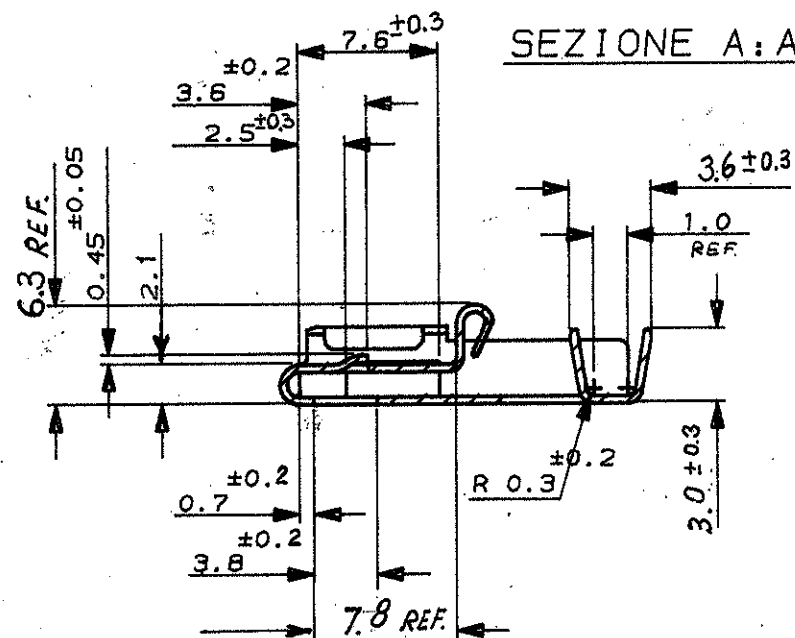


SCALA NON IMPEGNATIVA
(DO NOT SCALE)
DIMENSIONI IN mm
(DIMENSIONS IN mm)

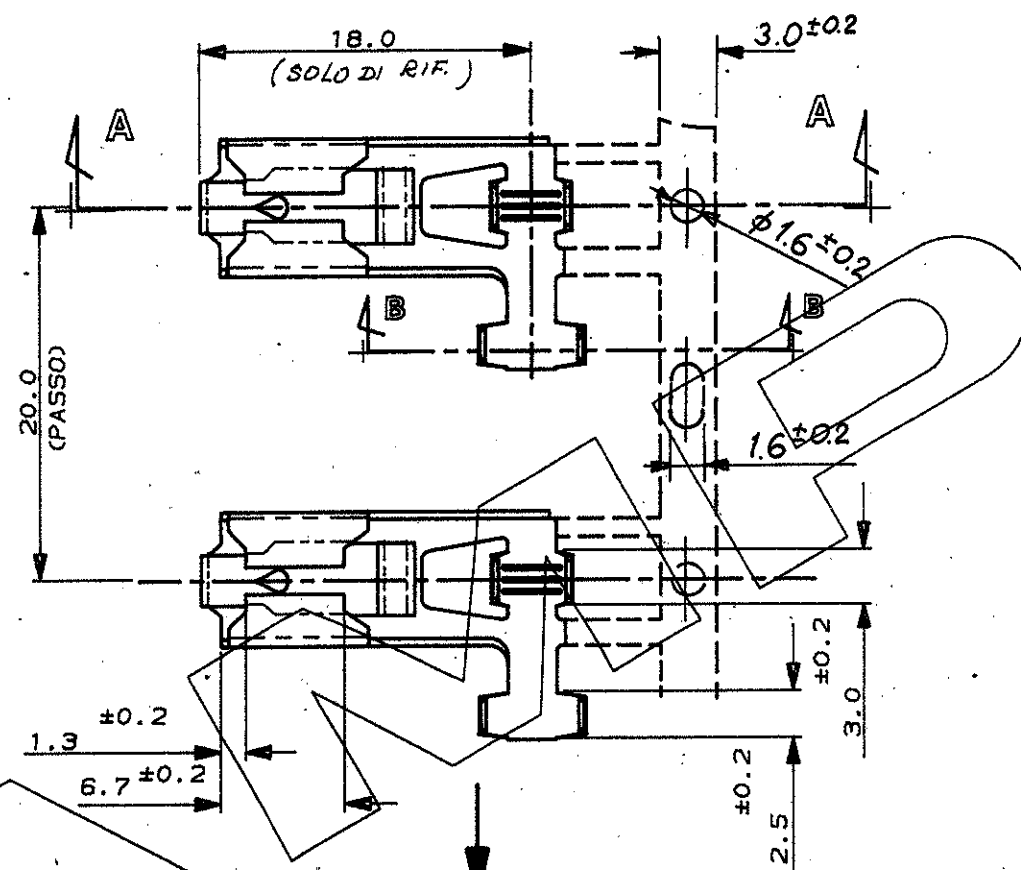
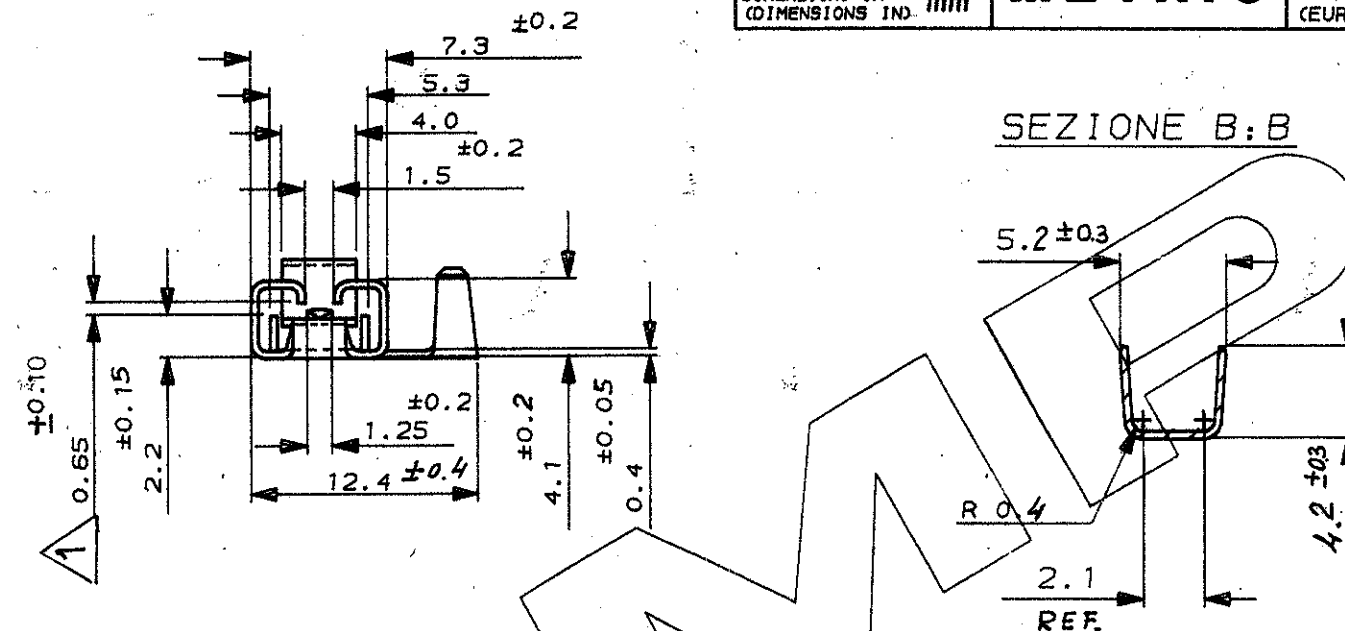
METRIC

PROIEZIONE EUROPEA
(EUROPEAN PROJECTION)

SEZIONE A:A



SEZIONE B:B



SENSO DI USCITA
DALLA BOBINA

NOTE:

1 ADATTO PER TERMINALE MASCHIO CON FORO, SECONDO TABELLA FIAT 91319
FOGLIO 2 (TIPO A)

----	NICKEL-SILVER 65/18	282349-1
FINITURA / COLORE (FINISH / COLOUR)	MATERIALE (MATERIAL)	NUMERO (PART NUMBER)
CUSTOMER DWG. FOR REFERENCE ONLY		DISEGNO PER CLIENTE SOLO PER RIFERIMENTO
THIS DRAWING IS UNPUBLISHED		RELEASE FOR PUBLICATION
©COPYRIGHT 1978 BY AMP INCORPORATED, HARRISBURG, PA. ALL INTERNATIONAL RIGHT RESERVED AMP PRODUCTS MAY BE COVERED BY U.S. AND FOREIGN PATENT AND/OR PATENT PENDING		
TOLLERANZE, SE NON DIVERSAMENTE SPECIFICATO	DIAM. ISOLANTE (INS. DIA. RANGE)	RANGO FILO (WIRE RANGE)
(TOLERANCES, UNLESS OTHERWISE SPECIFIED)	± 0.3	0.5 ÷ 1.5 mm ²
ANGOLI (ANGLES)	± 2°	
DIS. C. IANNAPELLI (DR.) 13 MAR. '92	AMP ITALIA S.p.A. Corso F.lli Cervi, 15 COLLEGNO (TORINO)	
DESCRIZIONE (DESCRIPTION)	6.3 SERIES FLAG POSITIVE LOCK RECEPTACLE	
LOC. SIZE NUMERO (DWG. NO.)	APP. C-282349	REV. C
FOGLIO (SHEET)	1 DI 1	

REV.	ERA 90-S1173-1	DIS. DATA (DR.)	1-3-92	APP. C-282349
REVISIONI (REVISION RECORD)				
MODIFIED PER ET00-0015-98				
IN PRODUZIONE (I-3093)				

DISTRIBUZIONE
(PRINT DIST.)

Mouser Electronics

Authorized Distributor

Click to View Pricing, Inventory, Delivery & Lifecycle Information:

[TE Connectivity:](#)

[282349-1 \(Cut Strip\)](#) [282349-1 \(Loose Piece\)](#)