

4

3

2

1

THIS DRAWING IS UNPUBLISHED.

RELEASED FOR PUBLICATION

© COPYRIGHT - BY TYCO ELECTRONICS CORPORATION. ALL RIGHTS RESERVED.

LOC

DIST

REVISIONS

P

LTR

DESCRIPTION

DATE

DWN

APVD

G

86

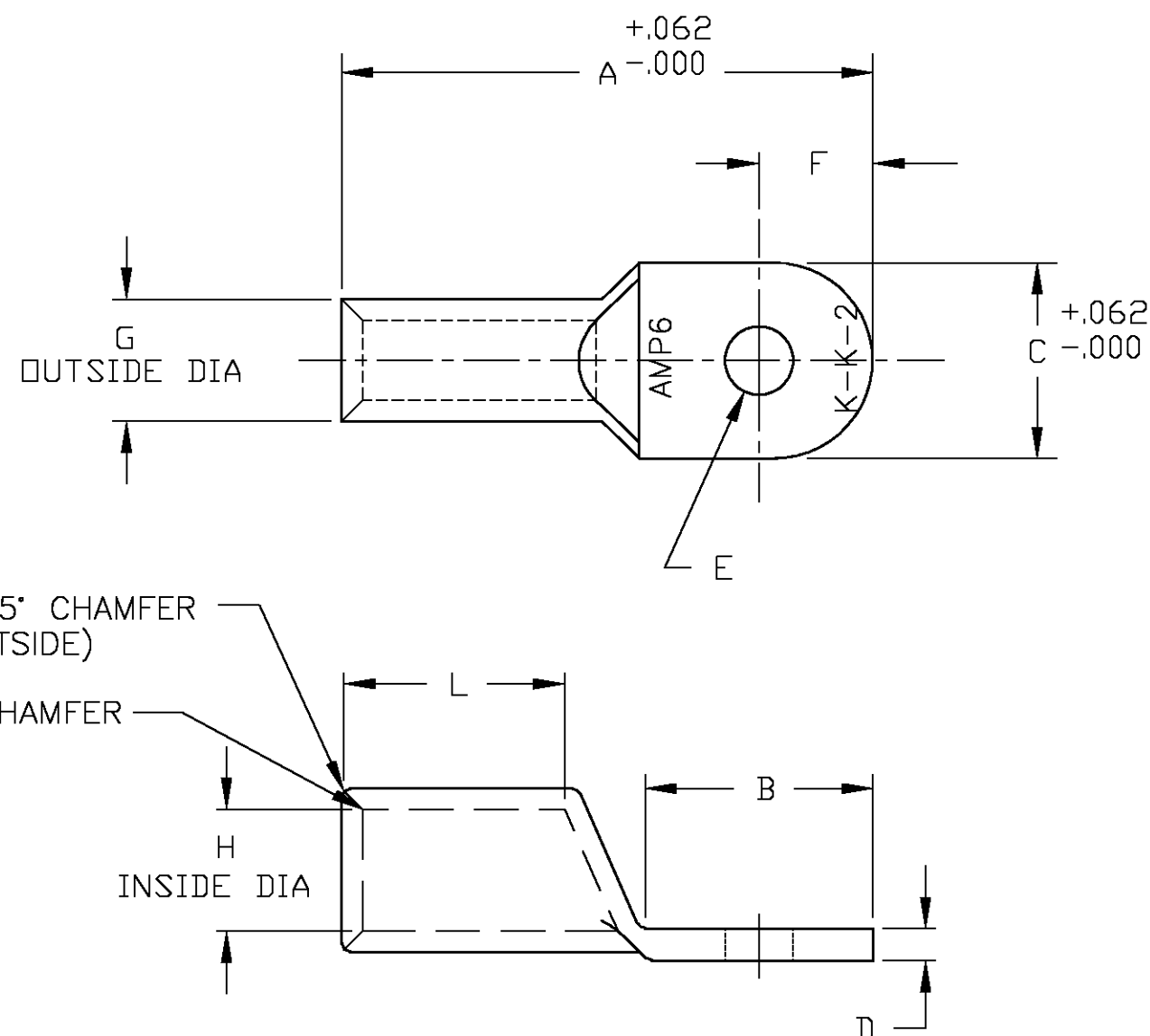
B

REV PER 0G3A-0088-05

01JUN05

JR

MS

HIGH CONDUCTIVITY WROUGHT COPPER
ANNEALED

OBSOLETE	#10	.750	.016	.031	.234	.359	.420	Ø.203	.094	.562	.813	1.813	606288-5		
	.375	.750	.016	.031	.234	.359	.420	Ø.391	.094	.594	.812	1.812	606288-3		
	.312	.750	.016	.031	.234	.359	.420	Ø.328	.094	.594	.719	1.719	606288-2		
	.250	.750	.016	.031	.234	.359	.420	Ø.266	.094	.562	.813	1.813	606288-1		
	BOLT HOLE SIZE	L	K	J	H	G	F	E	D	C	B	A	PART NUMBER		
	DIMENSIONS, INCHES														
THIS DRAWING IS A CONTROLLED DOCUMENT.						DWN jr ruth 01JUN05		<div>tyco Electronics</div> <div>Tyco Electronics Corporation Harrisburg, Pa 17105-3608</div>							
						CHK MJ SPICER 01JUN05									
DIMENSIONS: INCHES			TOLERANCES UNLESS OTHERWISE SPECIFIED: 0 PLC ± - 1 PLC ± - 2 PLC ± .02 3 PLC ± .005 4 PLC ± .0005 ANGLES ± 5°			APVD MJ SPICER 01JUN05		NAME AMP TUBULAR TERMINAL 6 AWG - -							
						PRODUCT SPEC -									
MATERIAL -			FINISH TIN PLATED			APPLICATION SPEC -		SIZE		CAGE CODE		DRAWING NO		RESTRICTED TO	
						WEIGHT -		A3		00779		C-606288		-	
CUSTOMER DRAWING										SCALE 1:1		SHEET 1 OF 1		REV B	

Mouser Electronics

Authorized Distributor

Click to View Pricing, Inventory, Delivery & Lifecycle Information:

[TE Connectivity:](#)

[606288-1](#)