

THIS DRAWING IS UNPUBLISHED.

RELEASED FOR PUBLICATION

-,-

© COPYRIGHT - By -

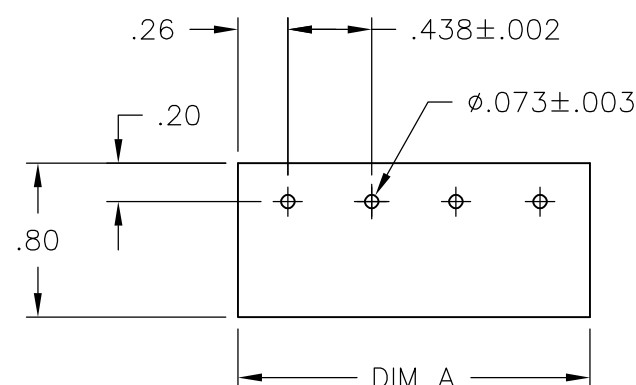
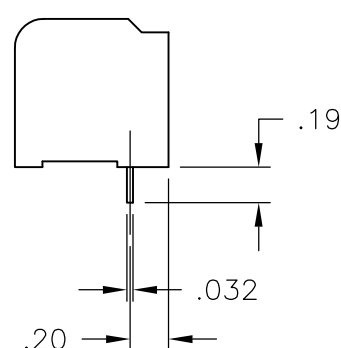
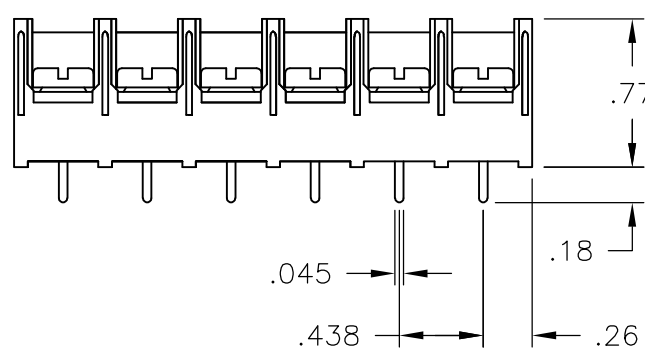
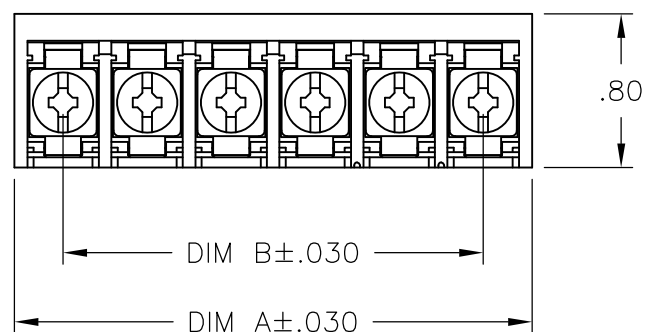
ALL RIGHTS RESERVED.

LOC

DIST

REVISIONS

P	LTR	DESCRIPTION	DATE	DWN	APVD
	K4	REVISED PER ECO-11-004587	11MAR11	RK	HMR



RECOMMENDED PCB LAYOUT

## MATERIALS:

HOUSING: THERMOPLASTIC, UL94V-0, BLACK.  
TERMINAL: BRIGHT TIN PLATED COPPER ALLOY.  
SCREWS: 8-32 ZINC PLATED STEEL.

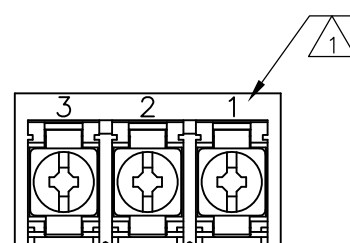
## ELECTRICAL:

CURRENT RATING: 30A  
VOLTAGE RATING: 600V  
WIRE RANGE: 10-18 AWG (UL)  
10-22 AWG (CSA)

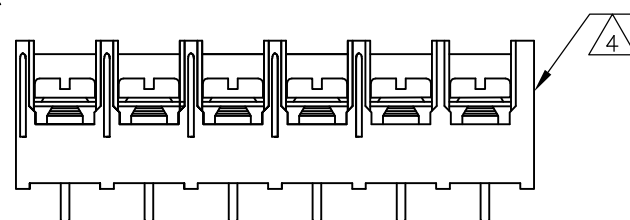
## MECHANICAL:

RECOMMENDED TORQUE: 20 IN-LB  
OPERATING TEMP.: -40°C TO +120°C.

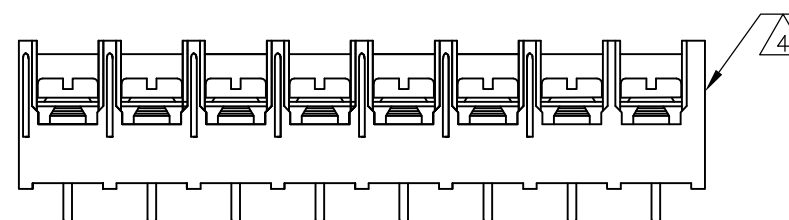
- 1 MARK WITH WHITE INK.  
2 M4 THREAD IN TERMINAL, NO SCREWS INCLUDED.  
3 ALL SCREWS TO BE BOTTOMED, EXCEPT AS NOTED.  
4 SCREWS ON THIS ASSEMBLY WIRE READY.



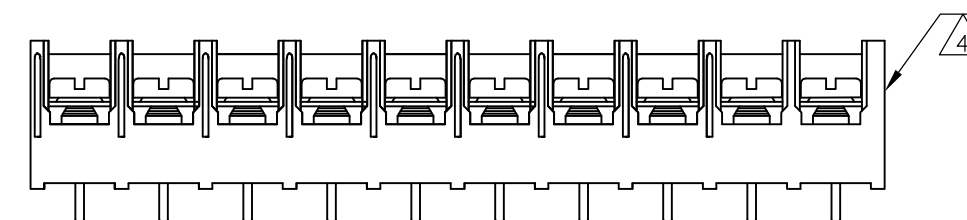
1546728-3



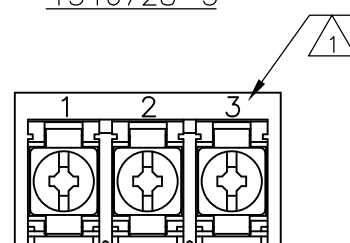
1986650-6



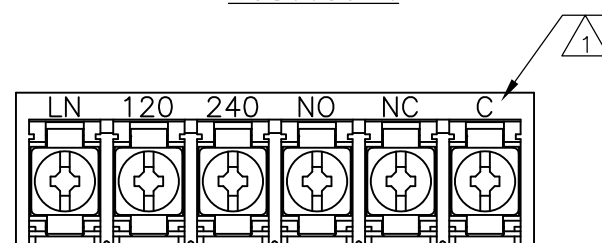
1986650-8



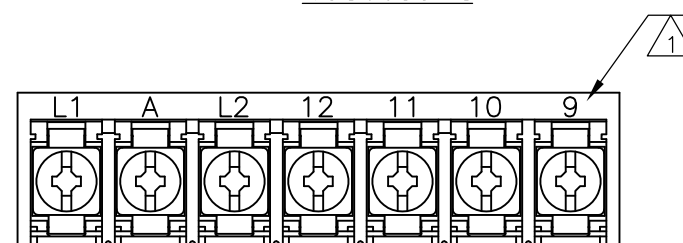
1-1986650-0



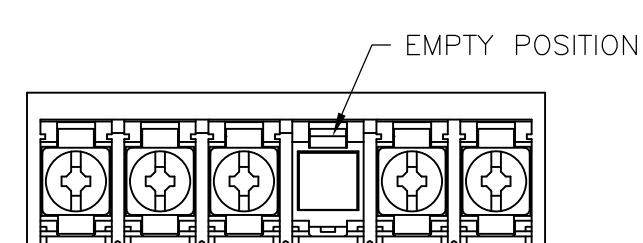
1546137-1



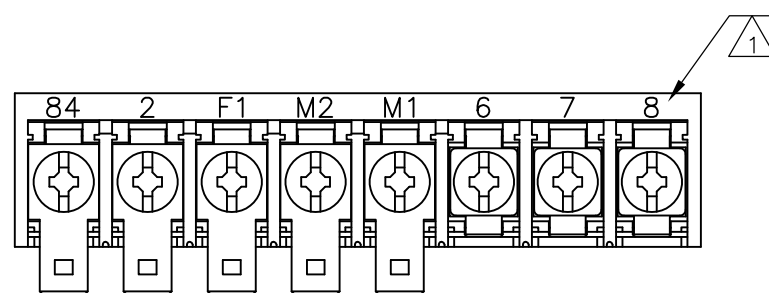
6-1546159-4



6-1546159-7



1546728-1



6-1546159-6

THIS DRAWING IS A CONTROLLED DOCUMENT.

DIMENSIONS: INCHES	TOLERANCES UNLESS OTHERWISE SPECIFIED:
	0 PLC ± - 1 PLC ± - 2 PLC ± .02 3 PLC ± .010 4 PLC ± - ANGLES ± - FINISH -
MATERIAL -	FINISH -

DWN	S SCHLEGEL	5/15/03
CHK	S YODER	5/15/03
APVD	S YODER	5/15/03
PRODUCT SPEC	-	-
APPLICATION SPEC	-	-
WEIGHT	-	-
CUSTOMER DRAWING		

		TE Connectivity	
		NAME	
8PCV-XX-006 ASSEMBLY		SIZE	CAGE CODE
A300779		DRAWING NO	RESTRICTED TO
C-6-1437657-3		SCALE	SHEET
NTS		1 OF 2	REV K4

4

3

2

1

THIS DRAWING IS UNPUBLISHED.

RELEASED FOR PUBLICATION  
- , - .

© COPYRIGHT - By -

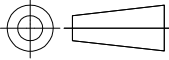
ALL RIGHTS RESERVED.

LOC	DIST	REVISIONS					
—	—	P	LTR	DESCRIPTION		DATE	APVD
			—	SEE SHEET 1		—	—

<div>2</div>	—	.875	1.385	3	—	1546728—5
	—	8.312	8.822	20	8PCV—20—006	8—1546159—2
	—	7.875	8.385	19	8PCV—19—006	1546728—2
	—	7.438	7.948	18	8PCV—18—006	7—1437658—2
	—	7.000	7.510	17	8PCV—17—006	8—1546159—1
	—	6.563	7.073	16	8PCV—16—006	6—1437658—6
	—	6.125	6.635	15	8PCV—15—006	8—1437659—0
	—	5.688	6.198	14	8PCV—14—006	6—1437658—0
	—	5.250	5.760	13	8PCV—13—006	5—1437658—5
	—	4.813	5.323	12	8PCV—12—006	4—1437658—5
	—	4.375	4.885	11	8PCV—11—006	4—1437658—0
	—	3.938	4.448	10	8PCV—10—006	3—1437658—3
	SEE FIGURE	3.938	4.448	10	8PCV—10—050	1—1986650—0
	—	3.500	4.010	9	8PCV—09—006	7—1546159—1
	SEE FIGURE	3.063	3.573	8	8PCV—08—502	6—1546159—9
	—	3.063	3.573	8	8PCV—08—006	2—1437658—1
	SEE FIGURE	3.063	3.573	8	8PCV—08—050	1986650—8
	SEE FIGURE	2.625	3.135	7	8PCV—07—598	6—1546159—7
	—	2.625	3.135	7	8PCV—07—623	1—1437658—6
	—	2.625	3.135	7	8PCV—07—006	1—1437658—1
	SEE FIGURE	2.187	2.697	6	8PCV—06—050	1986650—6
	SEE FIGURE	2.187	2.697	6	8PCV—06—050	1546728—1
	SEE FIGURE	2.187	2.697	6	8PCV—06—538	6—1546159—4
	—	2.187	2.697	6	8PCV—06—006	9—1437657—8
SUPERCEDED BY 8—1437657—8	—	1.750	2.260	5	8PCV—05—637	9—1437657—4
	—	1.750	2.260	5	8PCV—05—006	8—1437657—8
SUPERCEDED BY 8—1437657—0	—	1.312	1.822	4	8PCV—04—636	8—1437657—3
	—	1.312	1.822	4	8PCV—04—006	8—1437657—0
	SEE FIGURE	.875	1.385	3	8PCV—03—662	1546728—3
	SEE FIGURE	.875	1.385	3	8PCV—03—657	1546137—1
	—	.875	1.385	3	8PCV—03—006	6—1437657—9
	—	.437	.947	2	8PCV—02—006	5—1437657—7
	—	.437	.947	2	8PCV—02—634	6—1437657—3
COMMENTS		DIM B	DIM A	NO OF POS	CATALOG NUMBER	PART NO

THIS DRAWING IS A CONTROLLED DOCUMENT.

DIMENSIONS:  
INCHES



MATERIAL  
—

FINISH  
—

TOLERANCES UNLESS OTHERWISE SPECIFIED:

0 PLC ± —  
1 PLC ± —  
2 PLC ± .02  
3 PLC ± .010  
4 PLC ± —  
ANGLES ± —

DWN  
S SCHLEGEL  
5/15/03

CHK  
S YODER  
5/15/03

APVD  
S YODER  
5/15/03

PRODUCT SPEC  
—

APPLICATION SPEC  
—

WEIGHT  
—

8PCV—XX—006 ASSEMBLY

SIZE  
A3

CAGE CODE  
00779

DRAWING NO  
C-6—1437657—3


RESTRICTED TO  
—

CUSTOMER DRAWING

SCALE  
NTS

SHEET  
2 OF 2

REV  
K4

TE Connectivity

NAME

# Mouser Electronics

Authorized Distributor

Click to View Pricing, Inventory, Delivery & Lifecycle Information:

[TE Connectivity:](#)

[8PCV-08-006](#)