





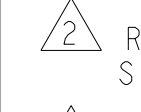
8		7	
THIS DRAWING IS UNPUBLISHED.		RELEASED FOR PUBLICATION	
2016		2016	
© COPYRIGHT 2016		BY TYCO ELECTRONICS CORPORATION. ALL RIGHTS RESERVED.	
PART NUMBER	REVISION	DESCRIPTION	FEED TYPE
2836287-1	C	FINE CRIMP HEIGHT ADJUST	MECHANICAL
2836287-2	C	FINE CRIMP HEIGHT ADJUST	PNEUMATIC
7-2836287-1	C	MECHANICAL AND CRIMP TOOLING KIT	MECHANICAL
7-2836287-2	C	PNEUMATIC AND CRIMP TOOLING KIT	PNEUMATIC
7-2836287-7	A	CRIMP TOOLING KIT	-


APPLICATOR DATA		
CRIMP	SIZE	TYPE
WIRE	1.57 mm [.062]	F
APPLICATOR INSTRUCTIONS 408-35042		


TERMINAL DATA: TE TERMINAL		TE CRIMP SPECIFICATION	
TERMINAL NAME: MICRO QUAD LOCK SYSTEM PIN CONTACT			
WIRE STRIP LENGTH			INSULATION DIAMETER RANGE
2.85-3.15 mm [.112-.124 IN]			Ø3.05-3.18 mm [.120-.125 IN]
TERMINAL APPLICATION SPECIFICATION		114-21150	
		-	-
		-	-
TERMINALS APPLIED 			
TE TERMINAL	TE TERMINAL	TE TERMINAL	TE TERMINAL
293390-1	293389-1		

WIRE SIZE	CRIMP HEIGHT mm [INCH]	CRIMP HEIGHT REFERENCE SETTING
18 AWG	1.07+/-0.03 [.042+/- .001]	5.8

- 

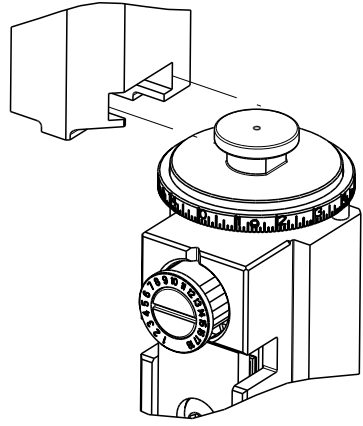
RECOMMENDED SPARE PARTS
- 

REFER TO SUPPLIED INSTRUCTION SHEET FOR CLEANING, LUBRICATION AND STORAGE OF APPLICATOR.
- 

CRIMP HEIGHT REFERENCE SETTING WAS THE SETTING USED WHEN THE APPLICATOR WAS QUALIFIED AT THE FACTORY. ADJUSTMENT MAY BE NECESSARY WHEN RUNNING APPLICATOR IN THE FIELD.
- 

TERMINAL LUBRICANT IS RECOMMENDED.
5. UNLESS SPECIFIED OTHERWISE TORQUE VALUES SHALL BE USED PER DOCUMENT, 101-35000.



ATLANTIC VERSION TERMINATOR
INTERFACE ADAPTER



ATLANTIC VERSION
Shown on sheets 1 of 4 & 2 of 4
(Pacific version shown on sheets 3 of 4 & 4 of 4)

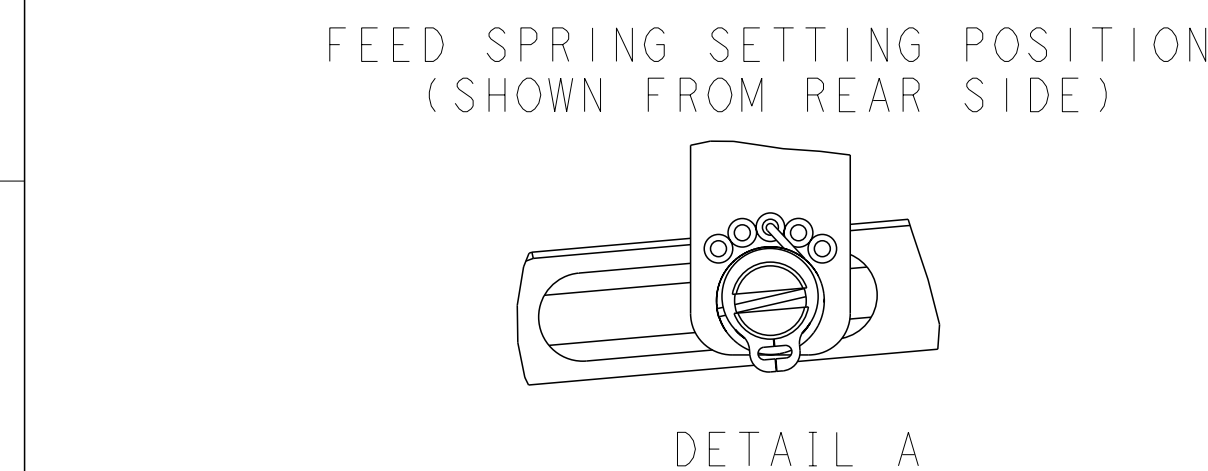
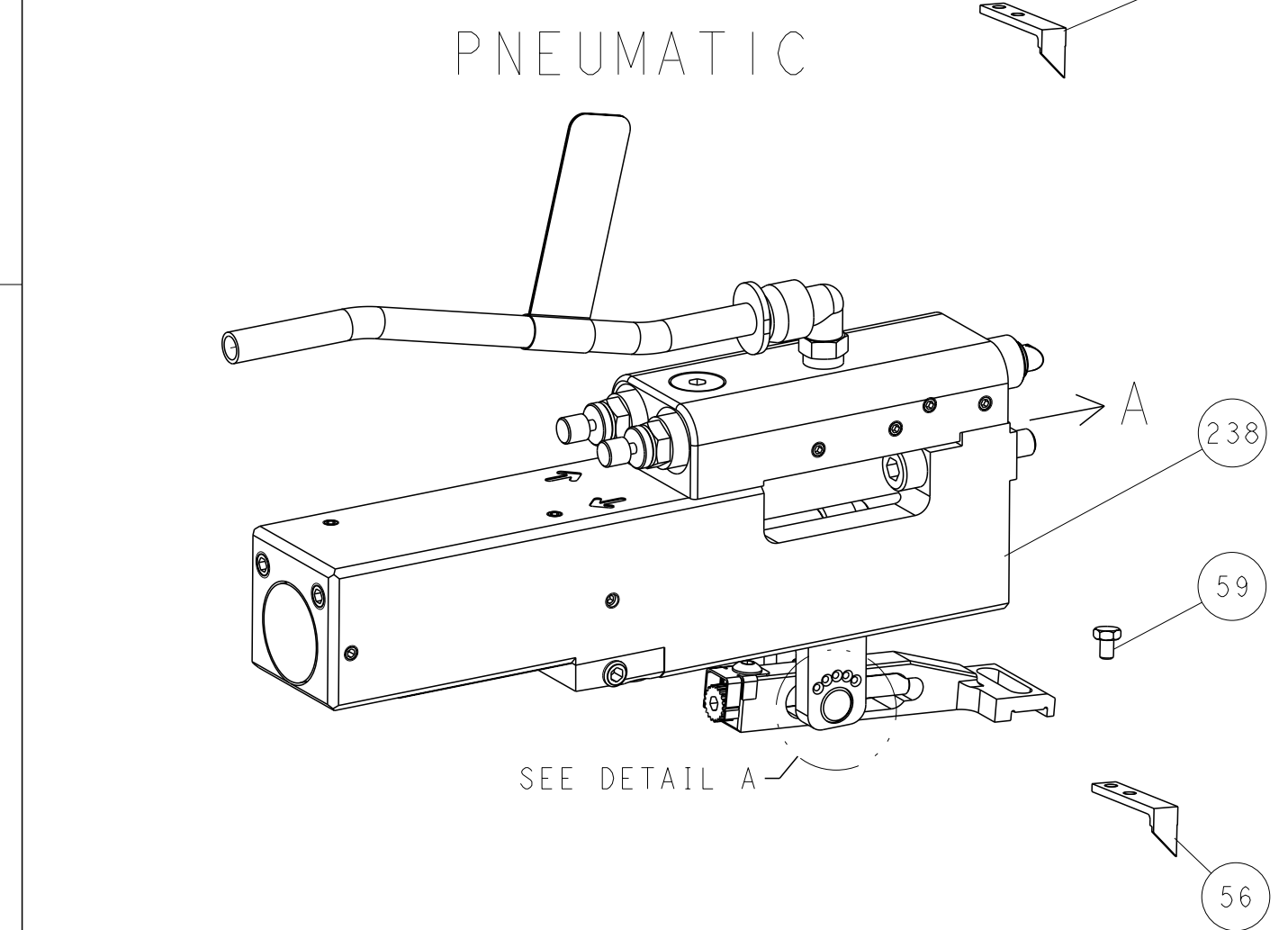
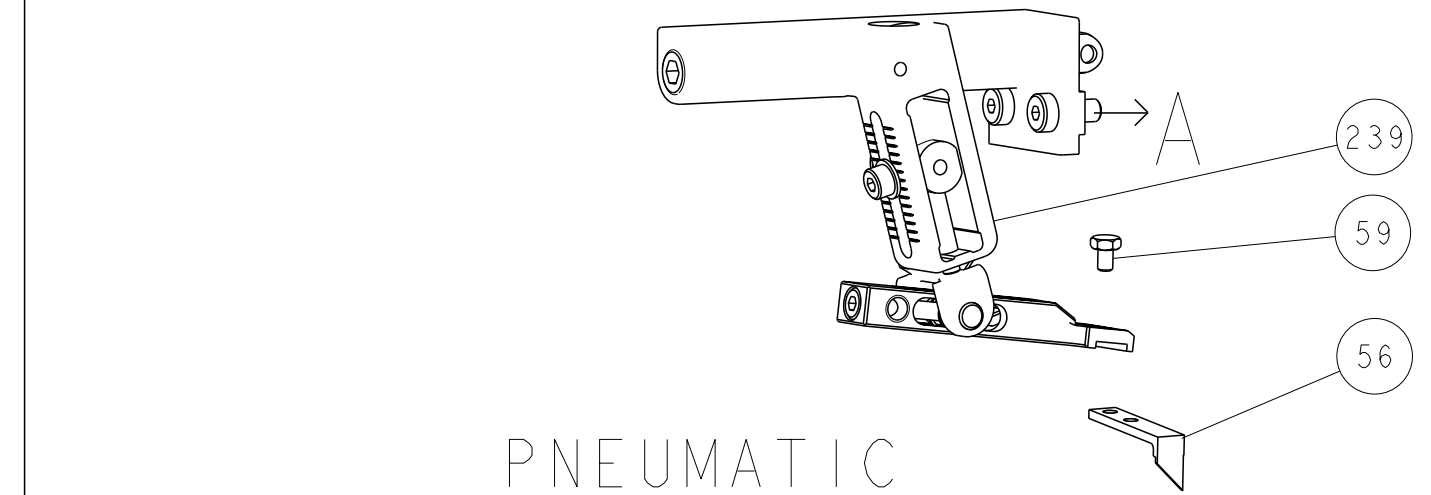
LOC	DIST	REVISONS				
		P	LYR	DESCRIPTION	DATE	DWN
						APVD
			I	PRELIMINARY	19APR2016	MEH
			A	RELEASED	01JUN2016	MEH
A	66		B	ECR-17-002869	27FEB2017	TB
			C	ECR-19-013733	03SEP2019	FJ

-	1	-	1	-	2119641-1	FEED CAM, AIR FEED	248
-	1	1	1	1	7-18023-7	SCR, SKT HD CAP M3 X 4.0	241
-	-	1	-	1	2119580-1	MECHANICAL FEED ASSEMBLY	239
-	1	-	1	-	2844940-1	AIR FEED MODULE	238
-	REF	REF	REF	REF	994970-2	COUNTER, MAGNETIC	164
-	1	1	1	1	2119955-1	ASSY, LUBRICATOR, SIDE FEED	113
-	1	1	1	1	2844908-1	SCREW, LOCKING	99
-	1	1	1	1	2844907-1	POST, LOCKING	98
-	1	1	1	1	455888-6	SPACER, CRIMPER	82
-	1	1	1	1	5-547505-2	SPRING, COMPRESSION	77
-	1	1	1	1	854769-4	HOLDER, INS	74
-	1	1	1	1	1803607-3	DOCUMENTATION PACKAGE	71
-	1	1	1	1	2119740-1	TAG, IDENTIFICATION	67
-	2	2	2	2	2168078-1	SCREW, DRIVE, RH, RoHS, 2 x .188	66
-	1	1	1	1	2168083-2	SCR, SKT HD CAP, RoHS, M4 X 8.0	60
-	1	1	1	1	5-18022-5	SCR, HEX HD CAP, M4 X 6.0	59
-	1	1	1	1	21028-2	PIN, SLOTTED SPRING .062 X .250	58
-	1	1	1	1	1338685-1	PAWL, FEED	56
-	4	4	4	4	2168083-3	SCR, SKT HD CAP, RoHS, M4 X 12.0	54
-	2	2	2	2	2168083-3	SCR, SKT HD CAP, RoHS, M4 X 12.0	53
-	1	1	1	1	5018030-1	NUT, HEX, REG, RoHS, M3	52
-	1	1	1	1	811242-5	BUMPER, HOLD DOWN	51
-	1	1	1	1	690753-2	SPACER, TONKER	50
-	1	2	1	2	18023-9	SCR, SKT HD CAP M4 X 6.0	49
-	-	1	-	1	2119652-1	FEED CAM, PRE FEED	48
-	-	1	-	1	2119653-1	FEED CAM, POST FEED	47
-	1	1	1	1	1803583-9	APPLICATOR BASIC ASSEMBLY, SF	46
-	1	1	1	1	1803515-1	RAM ASSEMBLY, SF ATLANTIC	44
-	1	1	1	1	1803602-1	SCR, BHSC, RoHS (M8 X 25)	41
-	1	1	1	1	1752356-6	SUPPORT, TERMINAL	34
-	2	2	2	2	2079383-5	SCR, BHSC, RoHS (M4 X 20)	33
-	2	2	2	2	2-2844962-4	SPACER, CYLINDRICAL, STRIP GUIDE	30
-	1	1	1	1	2844992-1	ASSEMBLY, STRIP GUIDE	29
-	1	1	1	1	1-455888-0	SPACER, CRIMPER	28
-	1	1	1	1	1320928-2	STRIP GUIDE	24
-	1	1	1	1	2168083-2	SCR, SKT HD CAP, RoHS, M4 X 8.0	21
-	2	2	2	2	1-18028-2	WASHER, FLAT, REG M4	20
-	1	1	1	1	2119533-1	STRIPPER, SIDE FEED	19
-	1	1	1	1	2119806-1	INSERT, SHEAR	13
-	1	1	1	1	3-22280-3	SPRING, COMPRESSION	12
-	1	1	1	1	1-356885-4	STOP, SHEAR	11
-	1	1	1	1	2119805-1	SHEAR HOLDER, FRONT	10
-	1	1	1	1	318707-1	FLOATING SHEAR, FRONT	9
1	2	2	1	1	1803190-9	ANVIL, WIRE	8
-	1	1	1	1	6-240641-4	SPACER	7
-	-	-	-	-	-	-	6
-	1	1	1	1	2119780-4	DEPRESSOR, SHEAR	5
-	-	-	-	-	-	-	4
-	-	-	-	-	-	-	3
-	-	-	-	-	-	-	2
1	2	2	1	1	6-456403-6	CRIMPER, WIRE PREMIUM	1
-77	-72	-71	-2	-1	PART NO	DESCRIPTION	ITEM NO

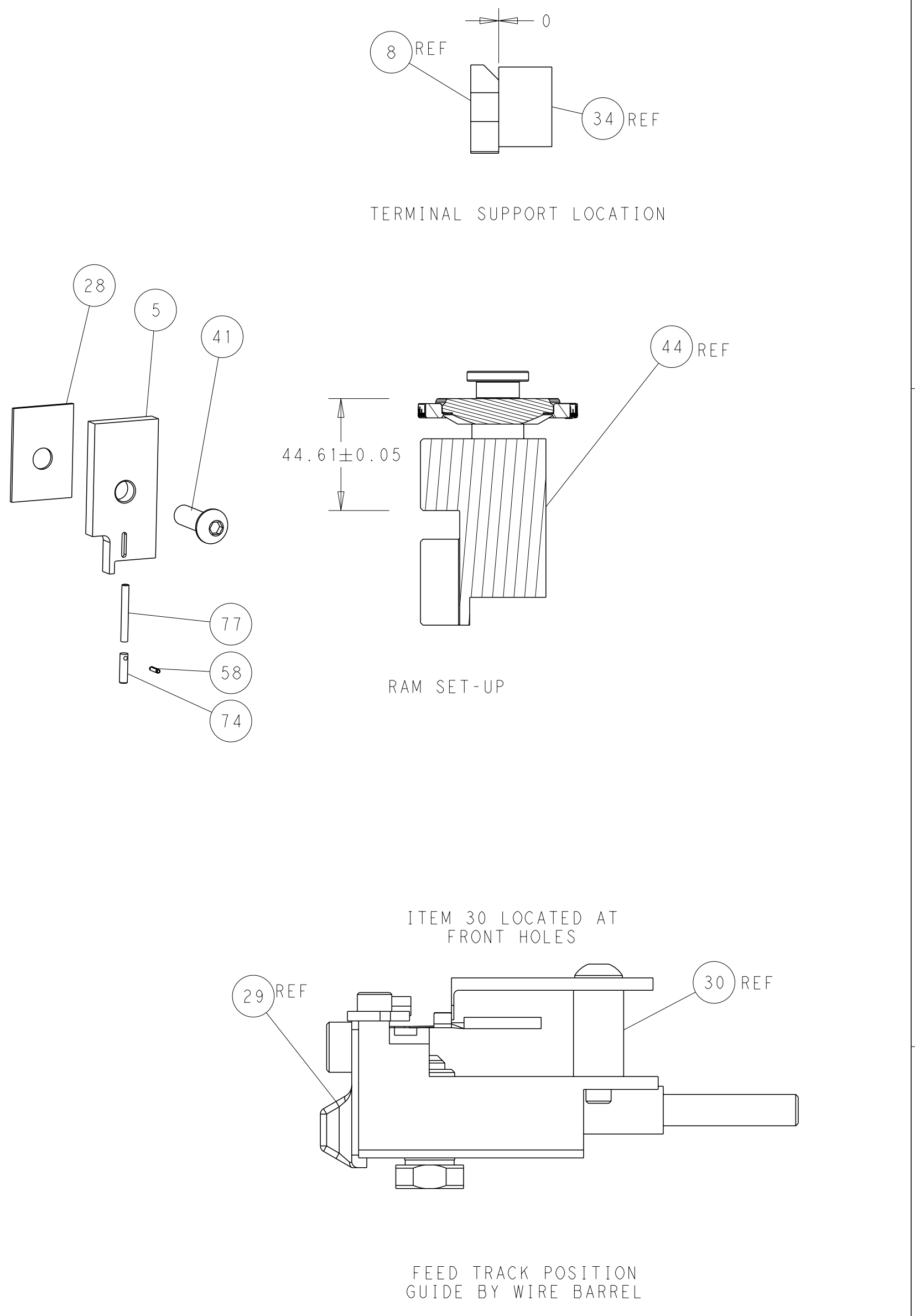
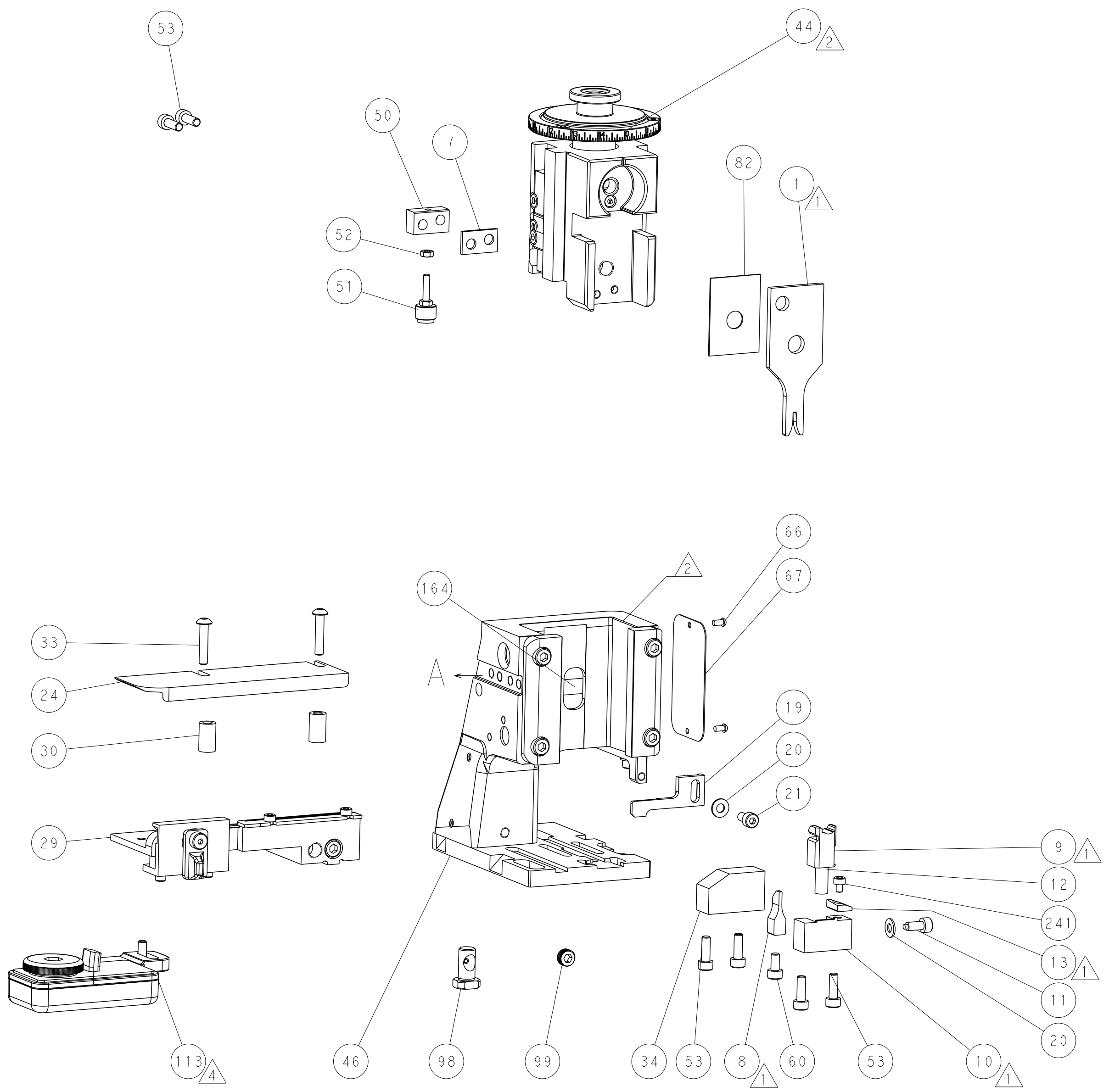
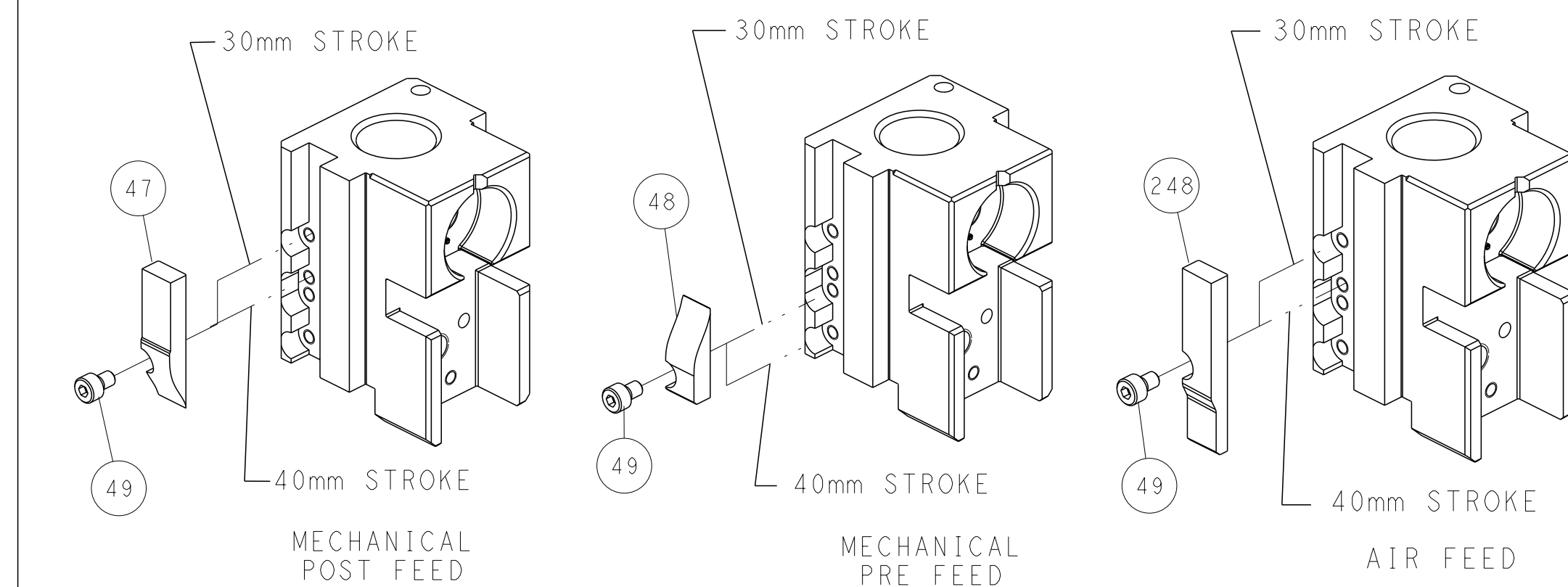
THIS DRAWING IS UNPUBLISHED. IT IS SUBJECT TO CHANGE AND TO BE CONTROLLED BY THE ENGINEERING ORGANIZATION. IT SHOULD BE CONTACTED FOR THE LATEST REVISION.				DWN	M	19APR2016	 TE Connectivity Harrisburg, PA 17105-3608			
				CHK	M	19APR2016				
DIMENSIONS:				APVD	T	ELBIN	NAME			
mm										
				PRODUCT SPEC			Ocean Side Feed Applicator			
				APPLICATION SPEC						
							SIZE			
				MATERIAL				WEIGHT		
							-			
				Customer Accessible Production Drawing			SCALE 1:2			
							SHEET 1 of 4			
							REV C			

SHEETS 3 & 4 ARE NOT REQUIRED FOR ATLANTIC VERSION


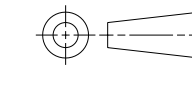
FEED TYPE MECHANICAL



CAM POSITIONS

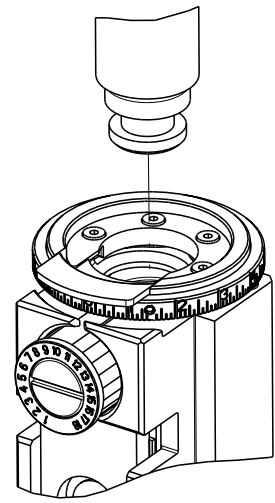


ATLANTIC VERSION
Shown on sheets 1 of 4 & 2 of 4
(Pacific version shown on sheets 3 of 4 & 4 of 4)

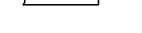

THIS DRAWING IS A CONTROLLED DOCUMENT FOR TYCO ELECTRONICS CORPORATION. IT IS SUBJECT TO CHANGE AND TO CORRECTION. THE USER SHALL BE RESPONSIBLE FOR OBTAINING THE LATEST REVISION. SHOULD BE CONTACTED FOR THE LATEST REVISION.										DWN	M. HERR	19APR2016		TE Connectivity Harrisburg, PA 17105-3608							
										CHK	M. HERR	19APR2016									
										APVD	T. ELBIN	19APR2016		NAME	Ocean Side Feed Applicator						
										PRODUCT SPEC											
DIMENSIONS:		TOLERANCES UNLESS OTHERWISE SPECIFIED:								APPLICATION SPEC			SIZE	CAGE CODE	DRAWING NO	RESTRICTED TO					
mm		0 PLC ±								-											
		1 PLC ±								-											
		2 PLC ±								-											
		3 PLC ±								-											
		4 PLC ±								-											
		ANGLES								±											
FINISH		-								-							A1	00779	C=2836287	-	
MATERIAL		-								WEIGHT											-
Customer Accessible Production Drawing										SCALE		1:2				SHEET		2 OF 4		REV C	

8		7	
THIS DRAWING IS UNPUBLISHED.		RELEASED FOR PUBLICATION	
© COPYRIGHT 2016		BY TYCO ELECTRONICS CORPORATION. ALL RIGHTS RESERVED.	
PART NUMBER	REVISION	DESCRIPTION	FEED TYPE
2-2836287-1	C	FINE CRIMP HEIGHT ADJUST	MECHANICAL
2-2836287-2	C	FINE CRIMP HEIGHT ADJUST	PNEUMATIC
7-2836287-7	A	CRIMP TOOLING KIT	-

PACIFIC VERSION TERMINATOR
INTERFACE ADAPTER



APPLICATOR DATA		
CRIMP	SIZE	TYPE
WIRE	1.57 mm [.062]	F
APPLICATOR INSTRUCTIONS 408-35042		

TERMINAL DATA: TE TERMINAL		TE CRIMP SPECIFICATION	
TERMINAL NAME: MICRO QUAD LOCK SYSTEM PIN CONTACT			
WIRE STRIP LENGTH 2.85-3.15 mm [.112-.124 IN]			INSULATION DIAMETER RANGE Ø3.05-3.18 mm [.120-.125 IN]
TERMINAL APPLICATION SPECIFICATION	114-21150	-	-
TERMINALS APPLIED 			
TE TERMINAL	TE TERMINAL	TE TERMINAL	TE TERMINAL
293390-1	293389-1		

WIRE SIZE		CRIMP HEIGHT mm [INCH]		CRIMP HEIGHT REFERENCE SETTING
18 AWG		1.07+/-0.03 [.042+/-0.001]		5.8



- RECOMMENDED SPARE PARTS
- REFER TO SUPPLIED INSTRUCTION SHEET FOR CLEANING, LUBRICATION AND STORAGE OF APPLICATOR.
- CRIMP HEIGHT REFERENCE SETTING WAS THE SETTING USED WHEN THE APPLICATOR WAS QUALIFIED AT THE FACTORY. ADJUSTMENT MAY BE NECESSARY WHEN RUNNING APPLICATOR IN THE FIELD.
- TERMINAL LUBRICANT IS RECOMMENDED.
5. UNLESS SPECIFIED OTHERWISE TORQUE VALUES SHALL BE USED PER DOCUMENT, 101-35000.

*WARNING
ON INSTALLATION, SET WIRE DISC TO CRIMP HEIGHT REFERENCE SETTING FOR LARGEST WIRE SIZE. CRIMP HEIGHT REFERENCE SETTINGS GREATER THAN THE VALUE SHOWN MAY CAUSE DAMAGE TO THE CRIMP TOOLING, REFER TO THE INSTRUCTION SHEET FOR PROPER SETUP AND ADJUSTMENTS.

PACIFIC VERSION
Shown on sheets 3 of 4 & 4 of 4
(Atlantic version shown on sheets 1 of 4 & 2 of 4)

2		1						
LOC	DIST	REVISIONS						
A	66	DESCRIPTION				DATE	DWN	APVD
		P	LTR					
		-		SEE SHEET 1		-	-	-

-	1	1	7-18023-7	SCR, SKT HD CAP M3 X 4.0	241
-	-	1	2119580-1	MECHANICAL FEED ASSEMBLY	239
-	1	-	2844940-1	AIR FEED MODULE	238
-	REF	REF	994970-2	COUNTER, MAGNETIC	164
-	1	-	2119641-2	FEED CAM, AIR FEED	151
-	1	1	2168083-8	SCR, SKT HD CAP, RoHS, M4 X 16	144
-	4	4	2168083-9	SCR, SKT HD CAP, RoHS, M4 X 20	143
-	-	1	2119653-2	FEED CAM, POST FEED	142
-	1	1	1-1803583-0	APPLICATOR BASIC ASSEMBLY, SF	141
-	1	1	1803516-1	RAM ASSEMBLY, SF PACIFIC	140
-	1	1	2119955-1	ASSY, LUBRICATOR, SIDE FEED	113
-	1	1	2844908-1	SCREW, LOCKING	99
-	1	1	2844907-1	POST, LOCKING	98
-	1	1	455888-6	SPACER, CRIMPER	82
-	1	1	5-547505-2	SPRING, COMPRESSION	77
-	1	1	854769-4	HOLDER, INS	74
-	1	1	1803607-3	DOCUMENTATION PACKAGE	71
-	1	1	2119740-1	TAG, IDENTIFICATION	67
-	2	2	2168078-1	SCREW, DRIVE, RH, RoHS, 2 x .188	66
-	1	1	5-18022-5	SCR, HEX HD CAP, M4 X 6.0	59
-	1	1	21028-2	PIN, SLOTTED SPRING .062 X .250	58
-	1	1	1338685-1	PAWL, FEED	56
-	2	2	2168083-3	SCR, SKT HD CAP, RoHS, M4 X 12.0	53
-	1	1	5018030-1	NUT, HEX, REG, RoHS, M3	52
-	1	1	811242-5	BUMPER, HOLD DOWN	51
-	1	1	690753-2	SPACER, TONKER	50
-	1	2	18023-9	SCR, SKT HD CAP M4 X 6.0	49
-	-	1	2119652-1	FEED CAM, PRE FEED	48
-	1	1	1803602-1	SCR, BHSC, RoHS (M8 X 25)	41
-	1	1	1752356-6	SUPPORT, TERMINAL	34
-	2	2	2079383-5	SCR, BHSC, RoHS (M4 X 20)	33
-	2	2	2-2844962-4	SPACER, CYLINDRICAL, STRIP GUIDE	30
-	1	1	2844992-1	ASSEMBLY, STRIP GUIDE	29
-	1	1	1-455888-0	SPACER, CRIMPER	28
-	1	1	1320928-2	STRIP GUIDE	24
-	1	1	2168083-2	SCR, SKT HD CAP, RoHS, M4 X 8.0	21
-	2	2	1-18028-2	WASHER, FLAT, REG M4	20
-	1	1	2119533-1	STRIPPER, SIDE FEED	19
-	1	1	2119806-1	INSERT, SHEAR	13
-	1	1	3-22280-3	SPRING, COMPRESSION	12
-	1	1	1-356885-4	STOP, SHEAR	11
-	1	1	2119805-1	SHEAR HOLDER, FRONT	10
-	1	1	318707-1	FLOATING SHEAR, FRONT	9
1	1	1	1803190-9	ANVIL, WIRE	8
-	1	1	6-240641-4	SPACER	7
-	-	-	-	-	6
-	1	1	2119780-4	DEPRESSOR, SHEAR	5
-	-	-	-	-	4
-	-	-	-	-	3
-	-	-	-	-	2
1	1	1	6-456403-6	CRIMPER, WIRE PREMIUM	1
-77	-22	-21	PART NO	DESCRIPTION	ITEM NO

THE DRAWING IS A CONTROLLED DOCUMENT FOR THE ELECTRONIC CORPORATION. IT IS SUBJECT TO CHANGE AND TO BE CONTROLLED BY THE ENGINEERING ORGANIZATION. SHOULD BE CONTACTED FOR THE LATEST REVISION.		OWN M. HERR	19APR2016	TE Connectivity Harrisburg, PA 17105-3608	
DIMENSIONS: mm		CHK M. HERR	19APR2016		
		APVD T. ELBIN	19APR2016	NAME Ocean Side Feed Applicator	
TOLERANCES UNLESS OTHERWISE SPECIFIED: 0 PLC ± 1 PLC ± 2 PLC ± 3 PLC ± 4 PLC ± ANGLES ±		PRODUCT SPEC		SIZE 00779	
MATERIAL -		APPLICATION SPEC		CAGE CODE 2836287	
FINISH -		WEIGHT -		DRAWING NO 00779	
		Customer Accessible Production Drawing		SCALE 1:2	SHEET 3 OF 4
				REV C	

SHEETS 1 & 2 ARE NOT REQUIRED FOR PACIFIC VERSION

D

C

B

A

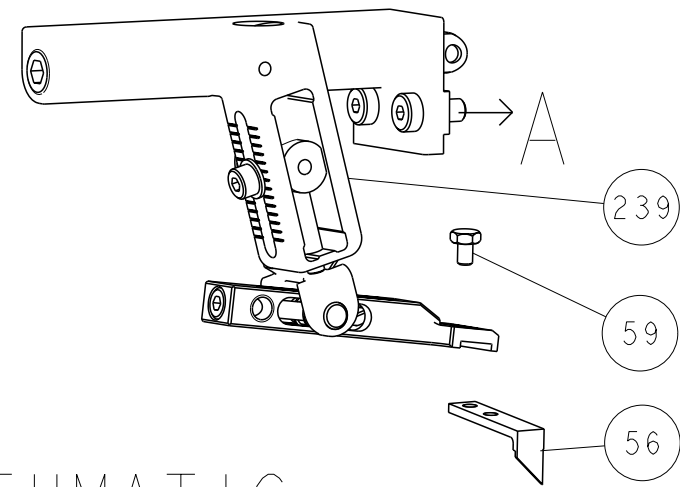
D

C

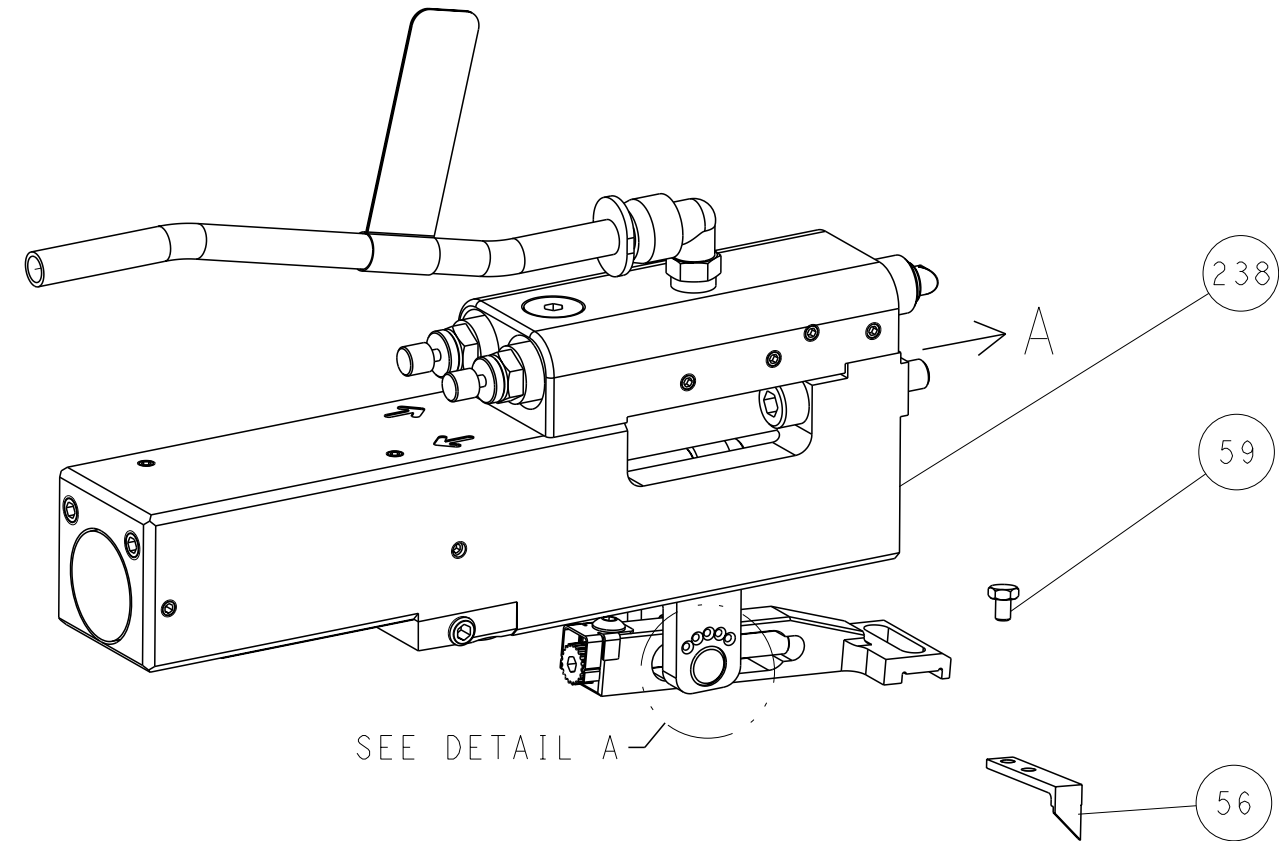
B

A

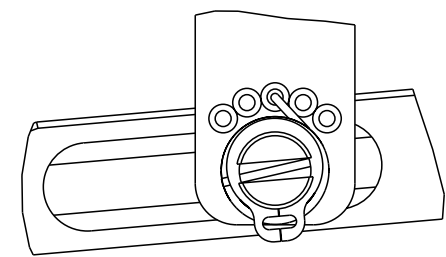
FEED TYPE MECHANICAL



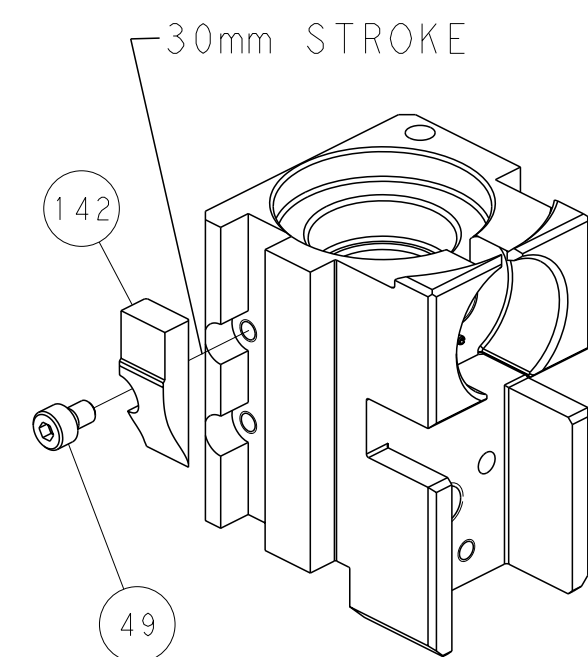
PNEUMATIC



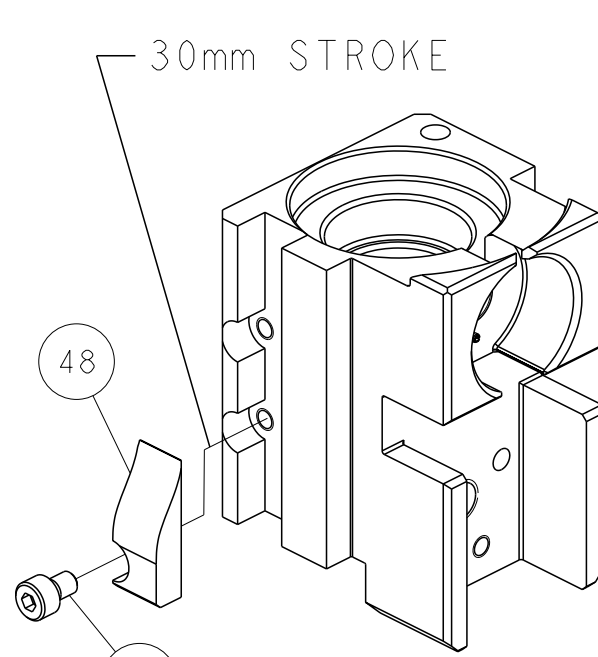
FEED SPRING SETTING POSITION
(SHOWN FROM REAR SIDE)



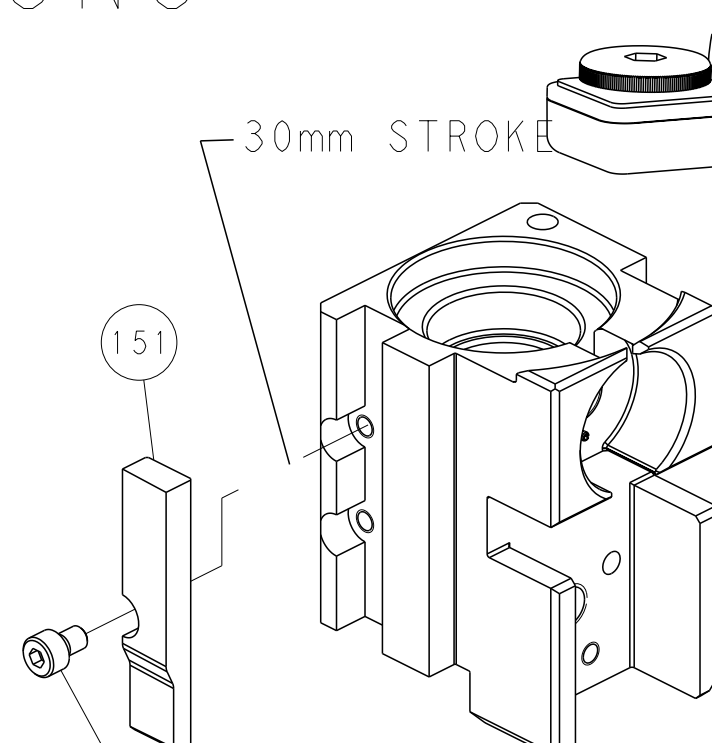
DETAIL A



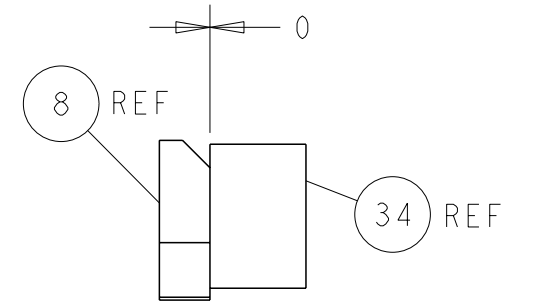
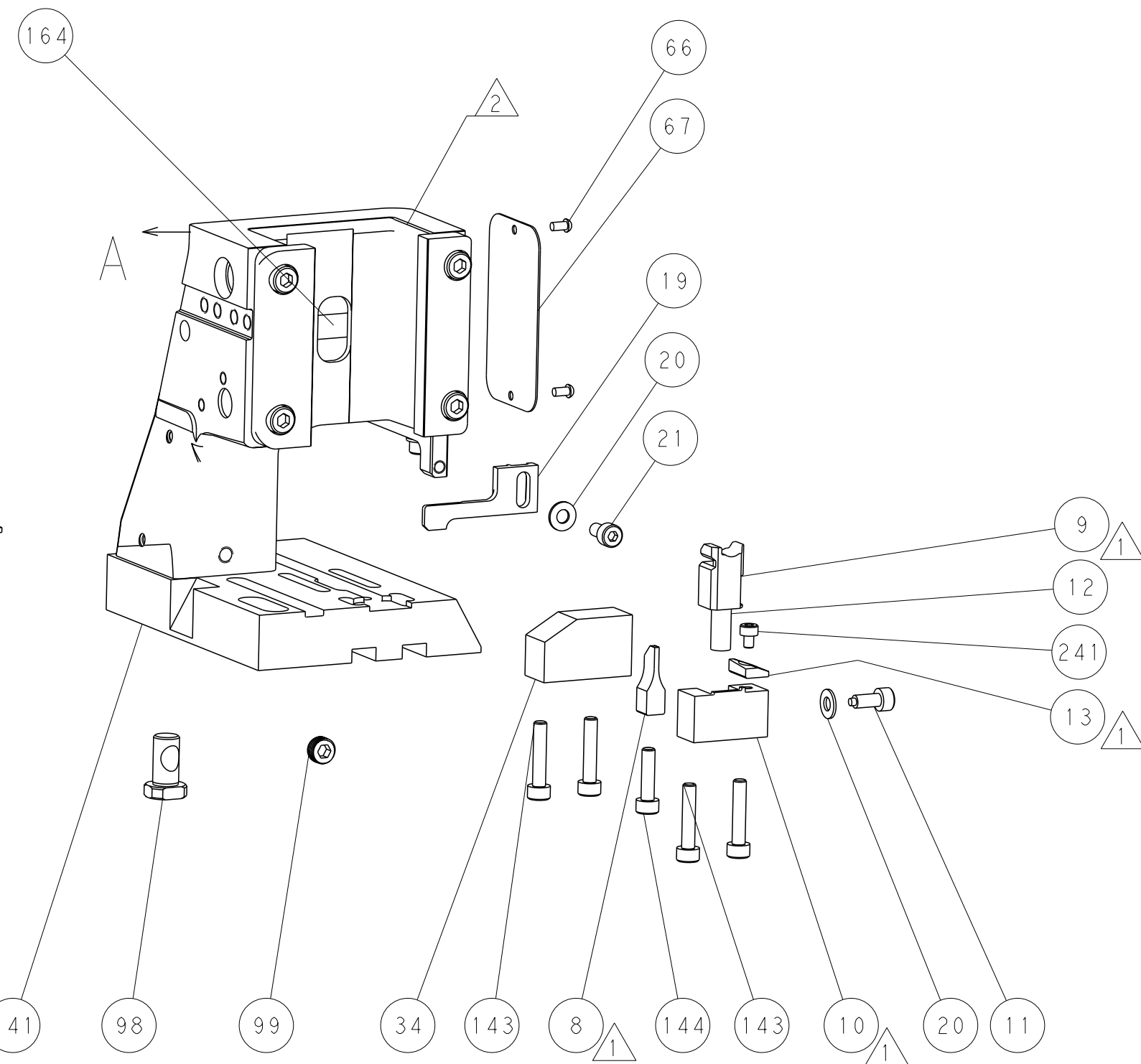
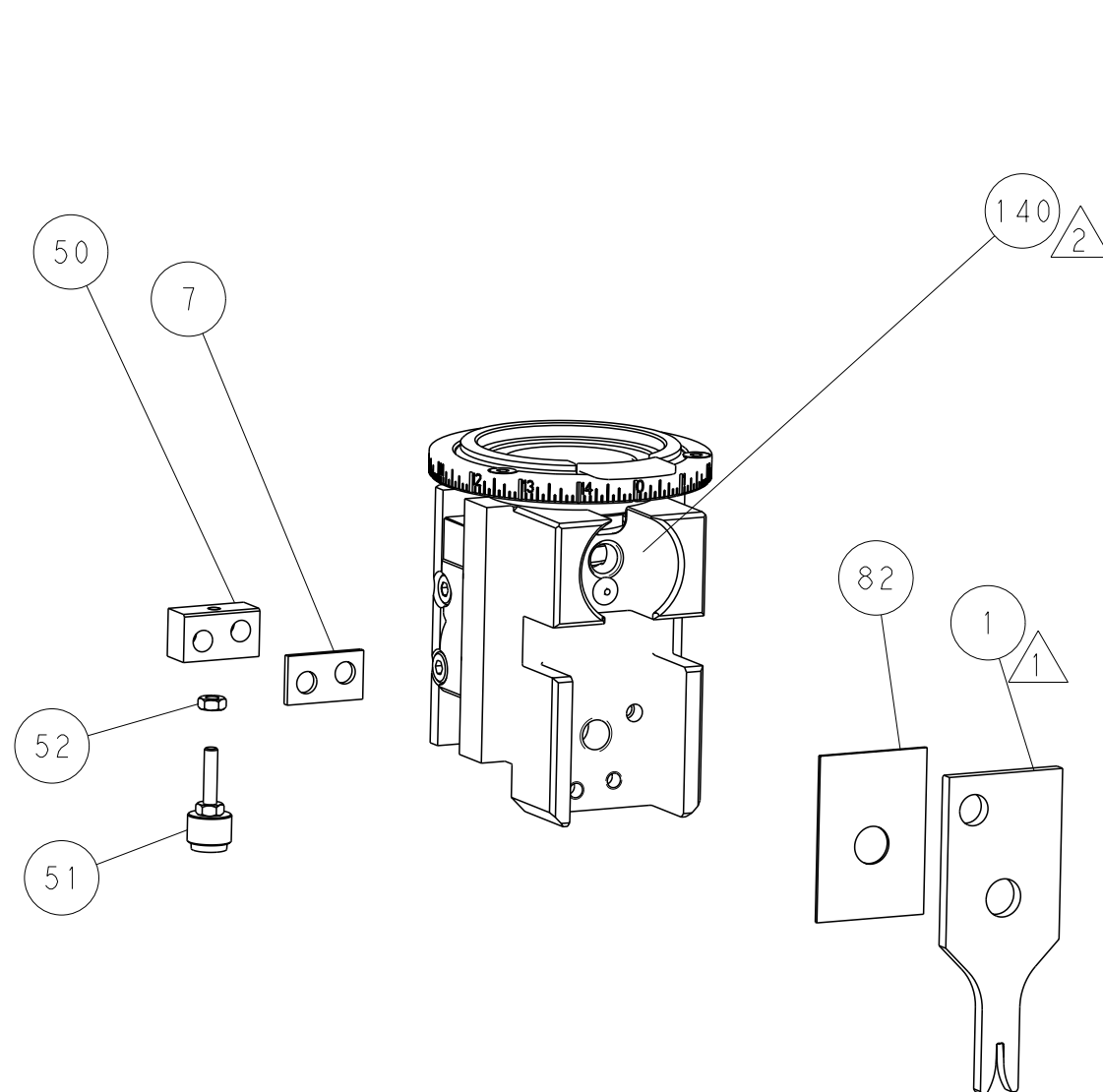
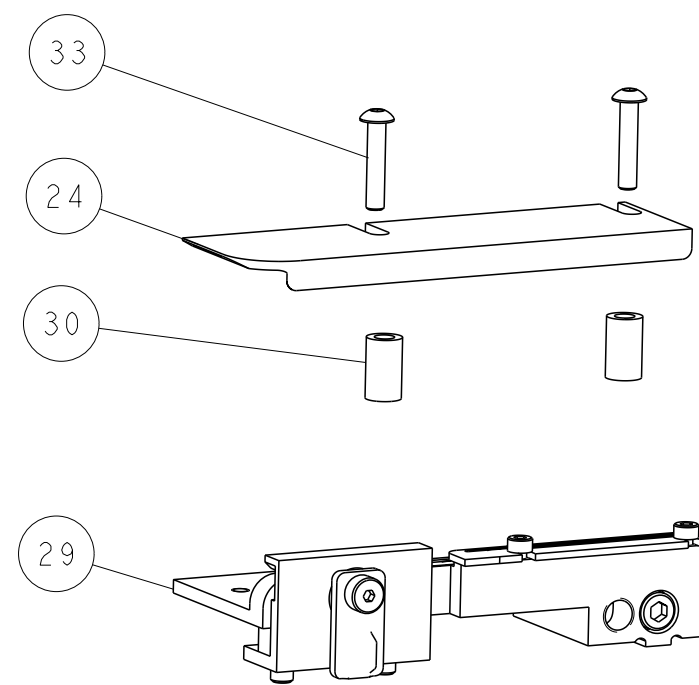
MECHANICAL
POST FEED



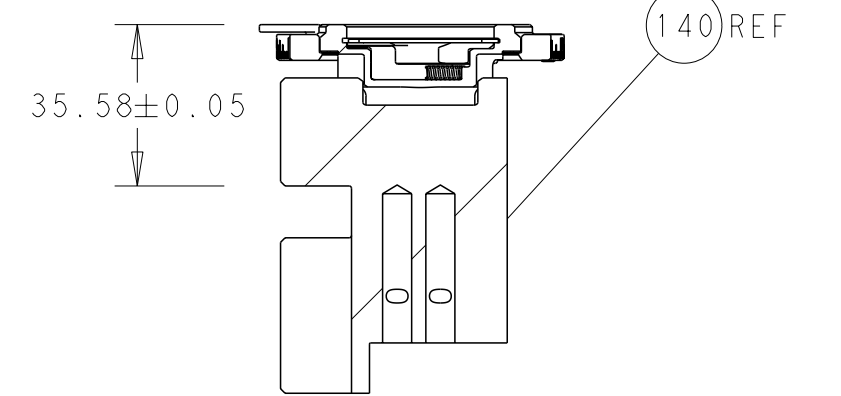
MECHANICAL
PRE FEED



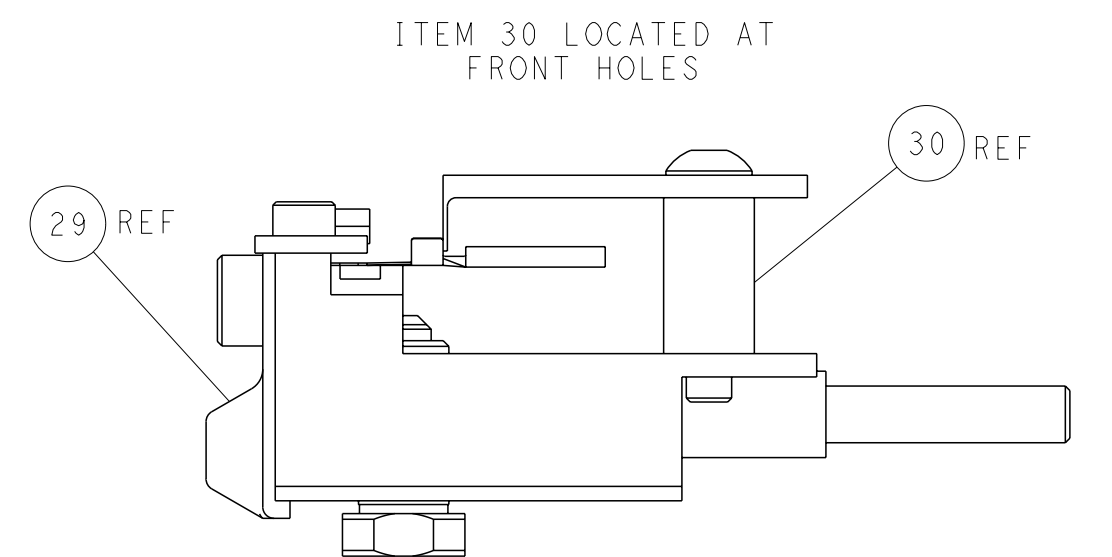
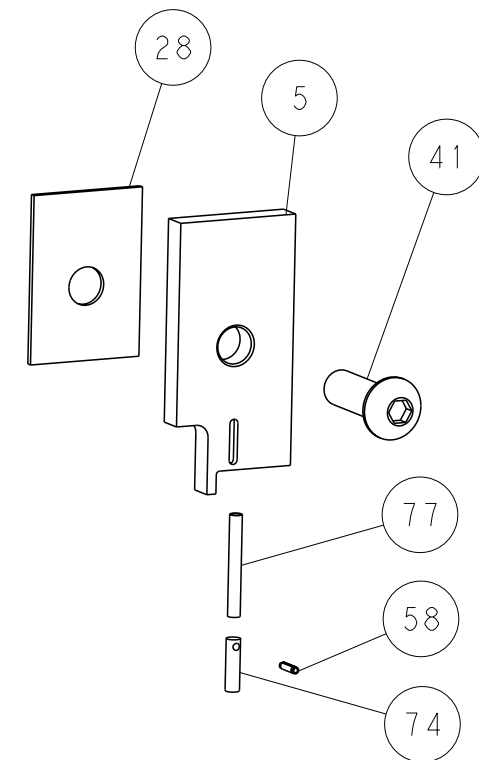
AIR FEED



TERMINAL SUPPORT LOCATION




RAM SET-UP



FEED TRACK POSITION
GUIDE BY WIRE BARREL

PACIFIC VERSION
Shown on sheets 3 of 4 & 4 of 4
(Atlantic version shown on sheets 1 of 4 & 2 of 4)

THIS DRAWING IS A CONTROLLED DOCUMENT FOR TYCO ELECTRONICS CORPORATION. IT IS SUBJECT TO CHANGE AND TO THE CONTROL AND ENGINEERING ORGANIZATION SHOULD BE CONTACTED FOR THE LATEST REVISION.				DWN	M. HERR	19APR2016	 TE Connectivity Harrisburg, PA 17105-3608	NAME		
				CHK	M. HERR	19APR2016				
				APVD	T. ELBIN	19APR2016				
				PRODUCT SPEC						
DIMENSIONS:				TOLERANCES UNLESS OTHERWISE SPECIFIED:			APPLICATION SPEC			
mm				0 PLC ±			SIZE			
				1 PLC ±			CAGE CODE			
				2 PLC ±			DRAWING NO			
				3 PLC ±			RESTRICTED TO			
				4 PLC ±			A 00779			
				ANGLES			C=2836287			
MATERIAL				FINISH			Customer Accessible Production Drawing			
							SCALE 1:2			
							SHEET 4 of 4			
							REV C			

SHEETS 1 & 2 ARE NOT REQUIRED FOR PACIFIC VERSION

Mouser Electronics

Authorized Distributor

Click to View Pricing, Inventory, Delivery & Lifecycle Information:

[TE Connectivity:](#)

[7-2836287-7](#)