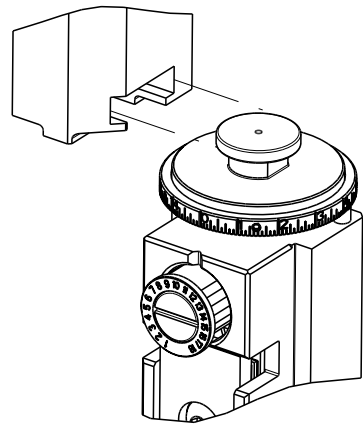
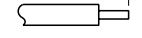



8		7	
THIS DRAWING IS UNPUBLISHED.		RELEASED FOR PUBLICATION	
2015		2015	
© COPYRIGHT 2015 BY TYCO ELECTRONICS CORPORATION. ALL RIGHTS RESERVED.			
PART NUMBER	REVISION	DESCRIPTION	FEED TYPE
2266929-1	C	FINE CRIMP HEIGHT ADJUST	MECHANICAL
2266929-2	C	FINE CRIMP HEIGHT ADJUST	PNEUMATIC
7-2266929-1	C	MECHANICAL AND CRIMP TOOLING KIT	MECHANICAL
7-2266929-2	C	PNEUMATIC AND CRIMP TOOLING KIT	PNEUMATIC
7-2266929-7	A	CRIMP TOOLING KIT	-

ATLANTIC VERSION TERMINATOR
INTERFACE ADAPTER



APPLICATOR DATA		
CRIMP	SIZE	TYPE
WIRE	1.78 mm [.070]	F
STABILIZER	2.03 mm [.080]	F
INSUL	2.03 mm [.080]	F
APPLICATOR INSTRUCTIONS 408-35042		

TERMINAL DATA: TE TERMINAL		TE CRIMP SPECIFICATION	
TERMINAL NAME: .070 SERIES TAB CONTACT			
WIRE STRIP LENGTH			INSULATION DIAMETER RANGE
2.50-3.00 mm [.098-.118 IN]			Ø1.00-1.50 mm [.039-.059 IN]
TERMINAL APPLICATION SPECIFICATION		114-5157-1	
			
TERMINALS APPLIED			
TE TERMINAL	TE TERMINAL	TE TERMINAL	TE TERMINAL
175207-1	175207-2	175207-3	

WIRE SIZE	CRIMP HEIGHT mm [INCH]	CRIMP HEIGHT REFERENCE SETTING
0.50mm2	1.17+/-0.05 [.046+/- .002]	6.1
0.30mm2	1.09+/-0.05 [.043+/- .002]	6.6



- 1 RECOMMENDED SPARE PARTS
- 2 REFER TO SUPPLIED INSTRUCTION SHEET FOR CLEANING, LUBRICATION AND STORAGE OF APPLICATOR.
- 3 APPLY PART NUMBER 2-23419-6 LOCTITE TO THREADS OF ITEM 242.
- 4 CRIMP HEIGHT REFERENCE SETTING WAS THE SETTING USED WHEN THE APPLICATOR WAS QUALIFIED AT THE FACTORY. ADJUSTMENT MAY BE NECESSARY WHEN RUNNING APPLICATOR IN THE FIELD.
- 5 SEE TERMINAL APPLICATION SPEC FOR CORRECT STABILIZER CRIMP HEIGHT.
6. UNLESS SPECIFIED OTHERWISE TORQUE VALUES SHALL BE USED PER DOCUMENT, 101-35000.

*WARNING
ON INSTALLATION, SET WIRE DISC TO CRIMP HEIGHT REFERENCE SETTING FOR LARGEST WIRE SIZE. CRIMP HEIGHT REFERENCE SETTINGS GREATER THAN THE VALUE SHOWN MAY CAUSE DAMAGE TO THE CRIMP TOOLING, REFER TO THE INSTRUCTION SHEET FOR PROPER SETUP AND ADJUSTMENTS.

ATLANTIC VERSION
Shown on sheets 1 of 4 & 2 of 4
(Pacific version shown on sheets 3 of 4 & 4 of 4)

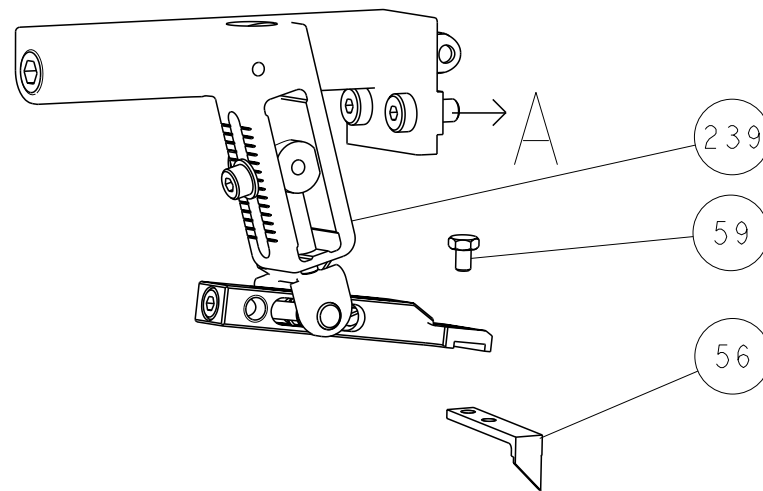
LOC	DIST	REVISIONS						
A	66	P	LYR	DESCRIPTION	DATE	DWN	APVD	
			A	RELEASED	08SEP2015	BW	GB	
			B	ECR-19-000738	18JAN2019	MZ	YY	
			C	ECR-20-010711	28JUL2020	JWC	TE	

1	1	1	1	1	2119786-3	CRIMPER, STABILIZER "F" PREMIUM	258
-	1	1	1	1	2119348-5	SNAIL CAM, STABILIZER CRIMP ADJUSTMENT	256
-	2	2	2	2	2079844-1	SPRING PLUNGER, M4	255
-	1	1	1	1	2119347-1	KNOB, STABILIZER CRIMP ADJUSTMENT	254
-	1	1	1	1	18032-1	SCR, SET, FLT PNT, M3 X 5.0	253
-	1	-	1	-	2119640-1	PUSH ROD, AIR FEED	250
-	1	-	1	-	1803259-1	BUSHING, FLANGED	249
-	1	-	1	-	2119641-1	FEED CAM, AIR FEED	248
-	1	1	1	1	2119082-5	CAM, SNAIL, INSULATION ADJUSTMENT	244
-	1	1	1	1	2079764-1	WASHER, WAVE SPRING, CREST-TO-CREST	243
-	1	1	1	1	2119083-1	RETAINER, INSULATION DIAL	242
-	1	1	1	1	7-18023-7	SCR, SKT HD CAP M3 X 4.0	241
-	-	1	-	1	2119580-1	MECHANICAL FEED ASSEMBLY	239
-	1	-	1	-	2063440-1	AIR FEED MODULE	238
-	2	-	2	-	21045-3	RING, RETAIN, EXTERN, 3/16 CRESCENT	172
-	REF	REF	REF	REF	994970-2	COUNTER, MAGNETIC	164
-	1	-	1	-	240638-1	SPRING, FEED FINGER	163
-	1	-	1	-	3-23627-7	PIN, RETAIN, GRVD, 3/16 X .854	137
-	1	-	1	-	2119799-1	HOLDER,FEED FINGER, AF	136
-	1	1	1	1	2844908-1	SCREW, LOCKING	99
-	1	1	1	1	2844907-1	POST, LOCKING	98
-	1	1	1	1	455888-7	SPACER, CRIMPER	82
-	1	1	1	1	5-547505-2	SPRING, COMPRESSION	77
-	1	1	1	1	854769-1	HOLDER, INS	74
-	1	1	1	1	1803607-1	DOCUMENTATION PACKAGE	71
-	1	1	1	1	2119740-1	TAG, IDENTIFICATION	67
-	2	2	2	2	2168078-1	SCREW, DRIVE, RH, RoHS, 2 x .188	66
-	1	1	1	1	2168083-2	SCR, SKT HD CAP, RoHS, M4 X 8.0	60
-	1	1	1	1	5-18022-5	SCR, HEX HD CAP, M4 X 6.0	59
-	1	1	1	1	21028-2	PIN, SLOTTED SPRING .062 X .250	58
-	1	1	1	1	1338685-1	PAWL, FEED	56
-	4	4	4	4	2168083-3	SCR, SKT HD CAP, RoHS, M4 X 12.0	54
-	2	2	2	2	1-2168083-0	SCR, SKT HD CAP, RoHS, M4 X 10	53
-	1	1	1	1	5018030-1	NUT, HEX, REG, RoHS, M3	52
-	1	1	1	1	811242-5	BUMPER, HOLD DOWN	51
-	1	1	1	1	690753-2	SPACER, TONKER	50
-	1	2	1	2	18023-9	SCR, SKT HD CAP M4 X 6.0	49
-	-	1	-	1	2119652-1	FEED CAM, PRE FEED	48
-	-	1	-	1	2119653-1	FEED CAM, POST FEED	47
-	1	1	1	1	1803583-9	APPLICATOR BASIC ASSEMBLY, SF	46
-	1	1	1	1	1803515-1	RAM ASSEMBLY, SF ATLANTIC	44
-	1	1	1	1	1803602-1	SCR, BHSC, RoHS (M8 X 25)	41
-	1	1	1	1	1752356-3	SUPPORT, TERMINAL	34
-	2	2	2	2	2079383-5	SCR, BHSC, RoHS (M4 X 20)	33
-	2	2	2	2	2-2844962-4	SPACER, CYLINDRICAL, STRIP GUIDE	30
-	1	1	1	1	2844992-1	ASSEMBLY, STRIP GUIDE	29
-	1	1	1	1	2119797-3	SPACER, CRIMPER, SPECIAL	28
-	1	1	1	1	1320928-2	STRIP GUIDE	24
-	1	1	1	1	2168083-2	SCR, SKT HD CAP, RoHS, M4 X 8.0	21
-	2	2	2	2	1-18028-2	WASHER, FLAT, REG M4	20
-	1	1	1	1	2119533-1	STRIPPER, SIDE FEED	19
-	1	1	1	1	2119806-1	INSERT, SHEAR	13
-	1	1	1	1	3-22280-3	SPRING, COMPRESSION	12
-	1	1	1	1	1-356885-4	STOP, SHEAR	11
-	1	1	1	1	2119805-1	SHEAR HOLDER, FRONT	10
-	1	1	1	1	1803095-1	FLOATING SHEAR, FRONT -	9
1	2	2	1	1	5-1633919-3	ANVIL, COMBINATION	8
-	-	-	-	-	-	-	6
-	1	1	1	1	2119790-1	SHEAR DEPRESSOR, STAB. CRIMP ADJ.	5
-	1	1	1	1	1-238011-8	BLOCK, CRIMPER SPACER	4
1	1	2	1	1	2119794-5	CRIMPER, INSUL F PREM, SPECIAL	3
-	1	1	1	1	455888-9	SPACER, CRIMPER	2
1	2	2	1	1	4-456404-6	CRIMPER, WIRE PREMIUM	1
-77-72-71	-2	-1			PART NO	DESCRIPTION	ITEM NO

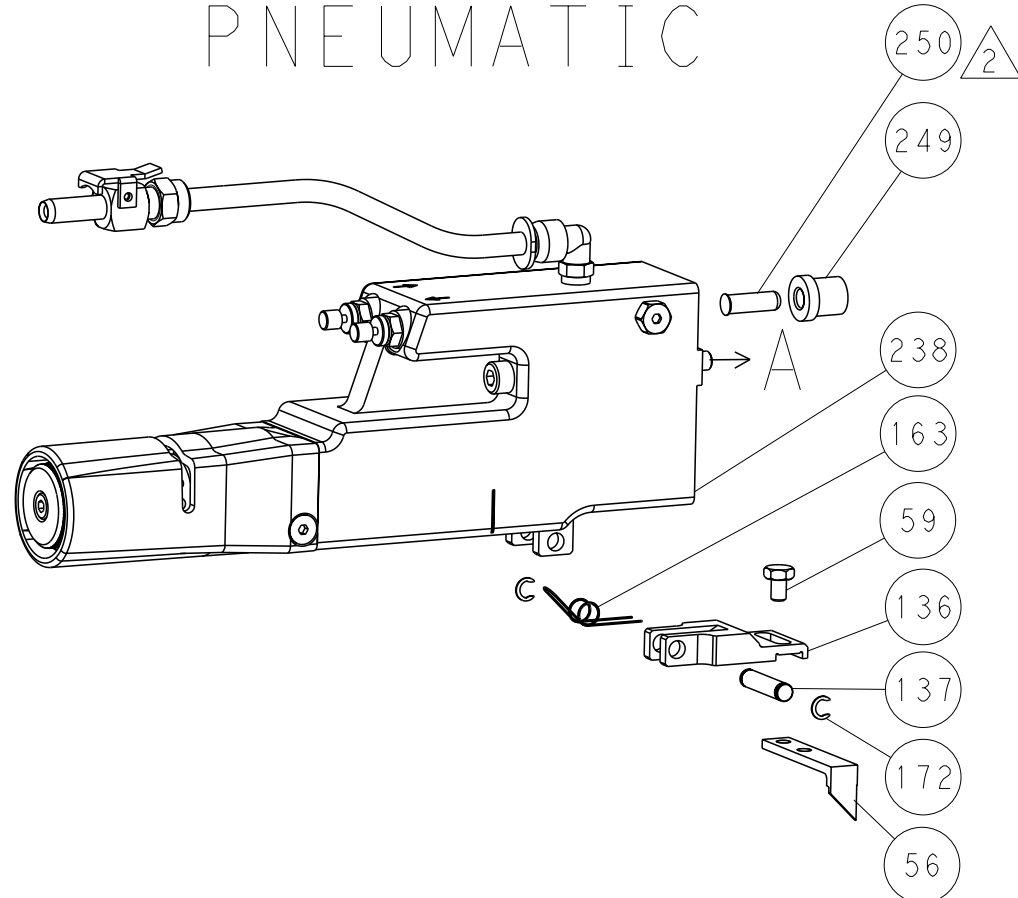
THIS DRAWING IS UNPUBLISHED. IT IS SUBJECT TO CHANGE AND TO BE CONTROLLED BY THE ENGINEERING ORGANIZATION. IT SHOULD BE CONTACTED FOR THE LATEST REVISION.				DWN B. WEAVER 08SEP2015	TE Connectivity Harrisburg, PA 17105-3608		
DIMENSIONS:				CHK G. BAILEY 08SEP2015			
mm				APVD G. BAILEY 08SEP2015			
TOLERANCES UNLESS OTHERWISE SPECIFIED:				PRODUCT SPEC			
0 PLC ± 1 PLC ± 2 PLC ± 3 PLC ± 4 PLC ±				APPLICATION SPEC	NAME Ocean Side Feed Applicator		
MATERIAL				FINISH	SIZE A1	CAGE CODE 00779	DRAWING NO C=2266929
					WEIGHT	SCALE 1:2	RESTRICTED TO -
						SHEET 1	REV C

LOC	DIST	REVISIONS					
		P	LYR	DESCRIPTION	DATE	DWN	APVD
A	66		-	SEE SHEET 1	-	-	-

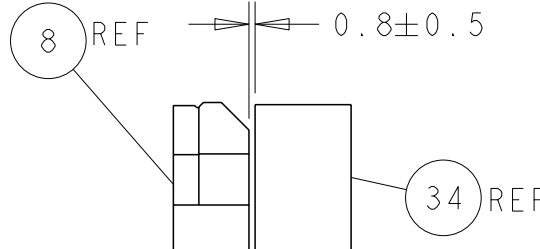
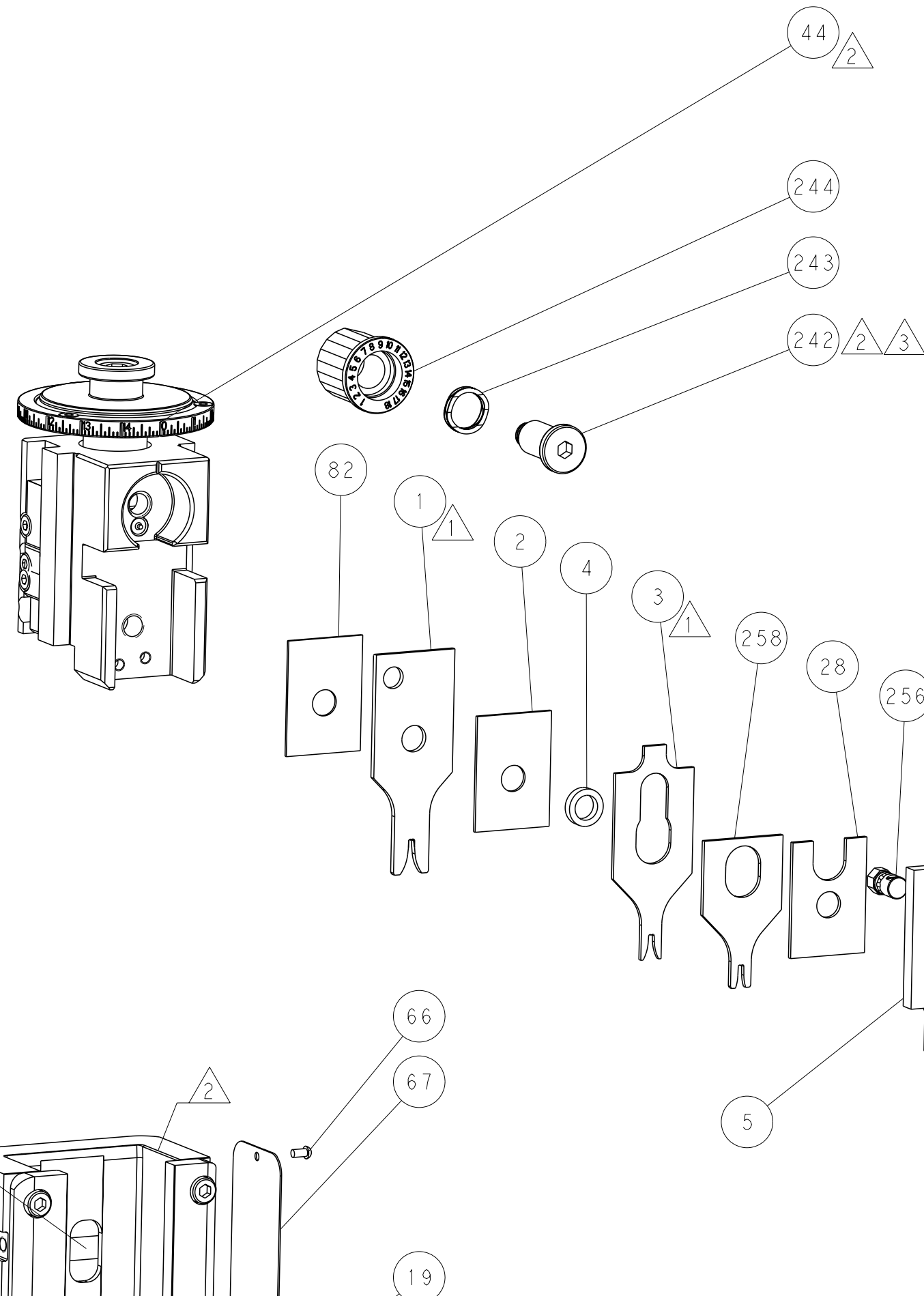
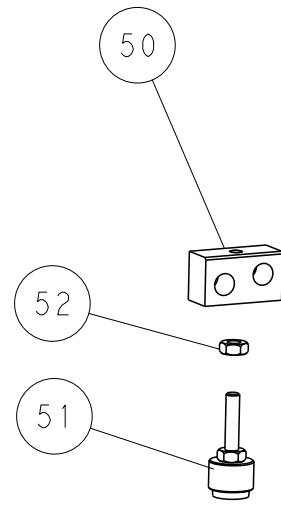
FEED TYPE
MECHANICAL



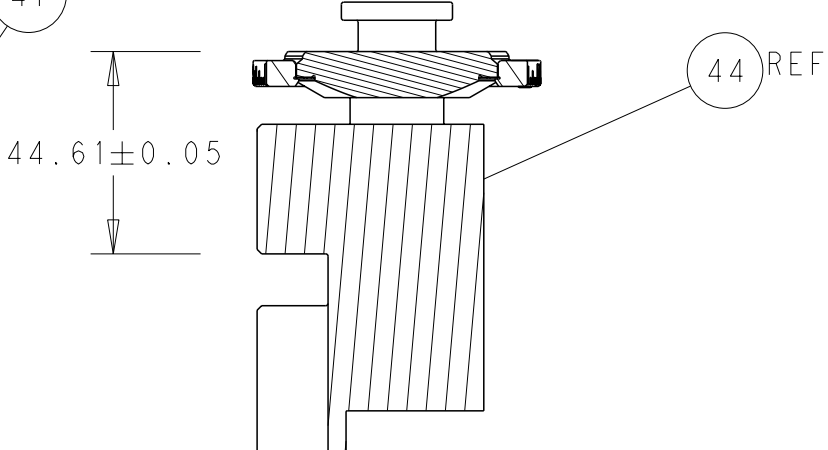
PNEUMATIC



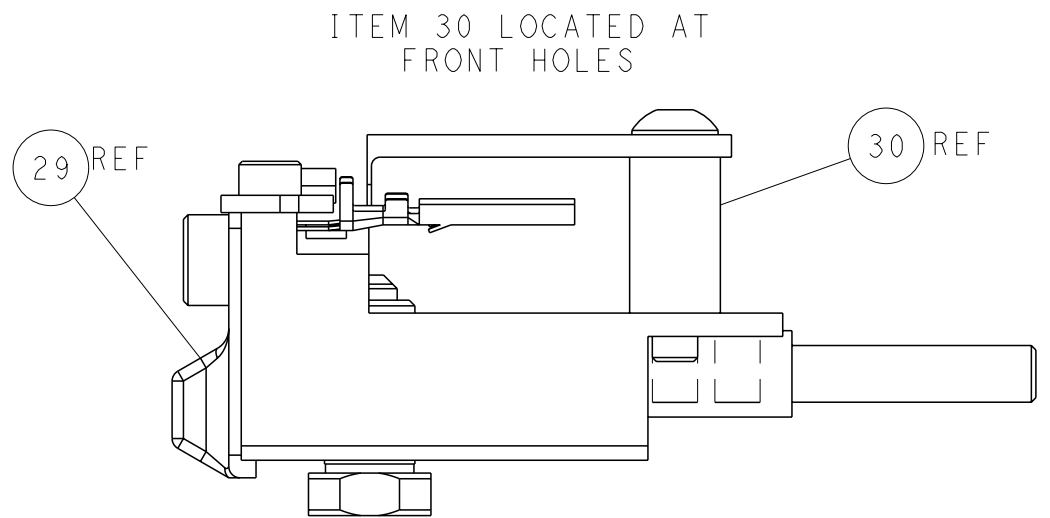
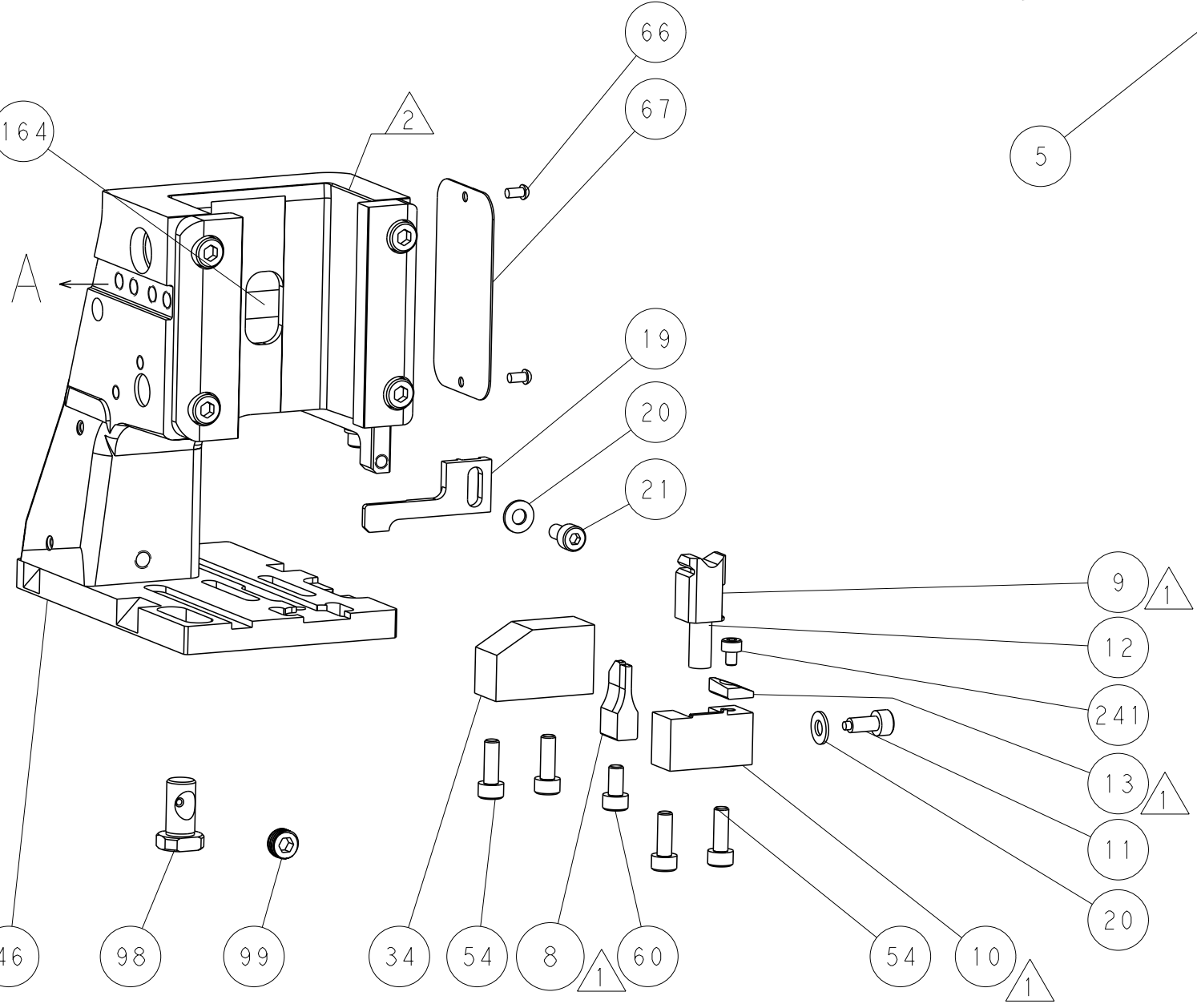
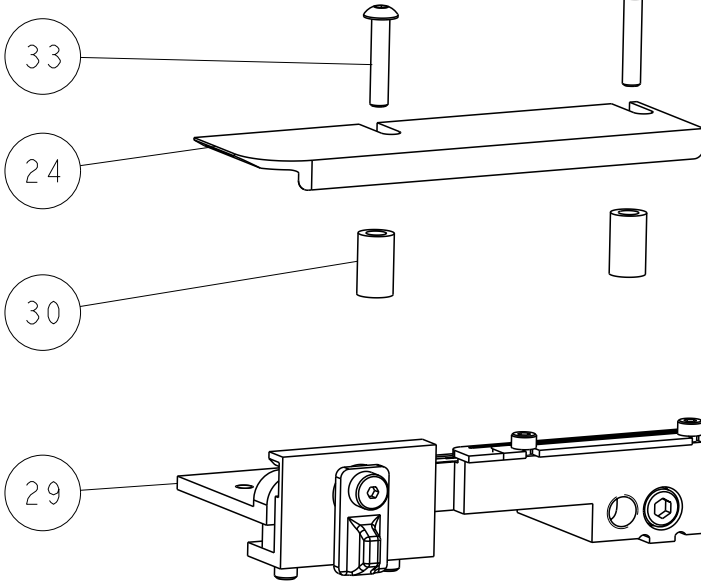
53



TERMINAL SUPPORT LOCATION

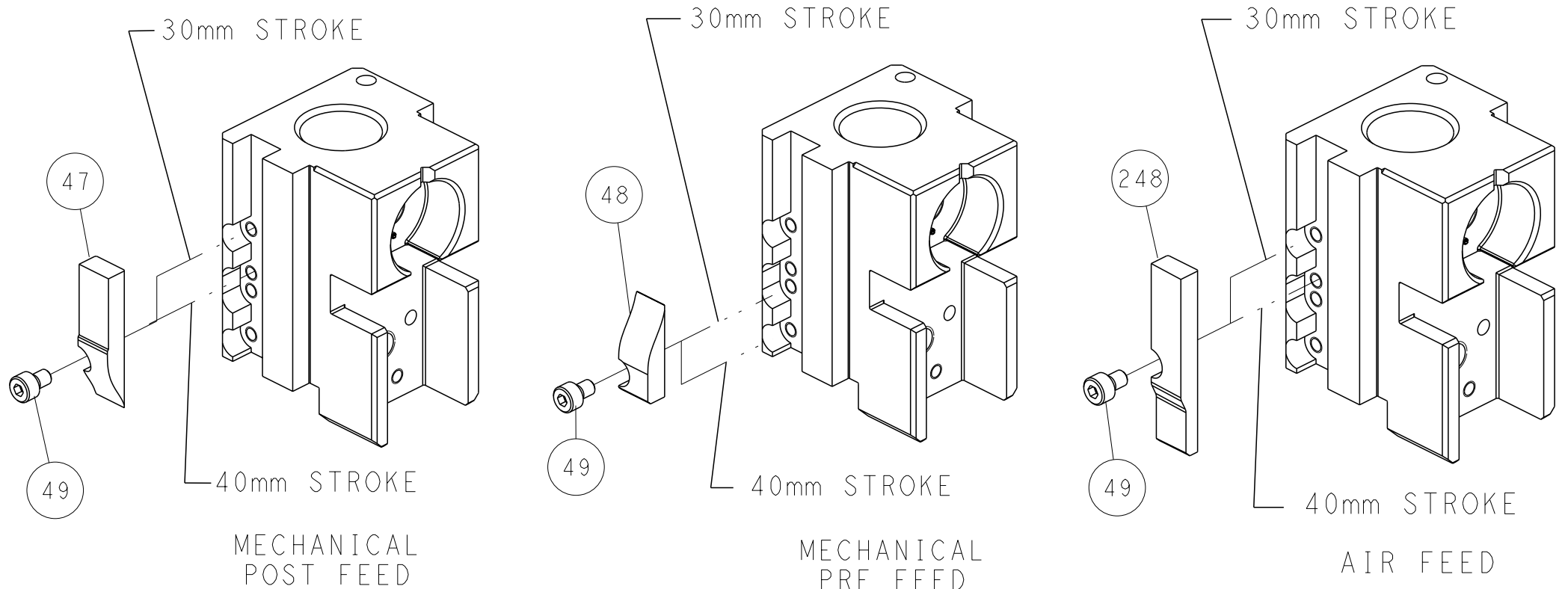


RAM SET-UP



ITEM 30 LOCATED AT
FRONT HOLES

CAM POSITIONS

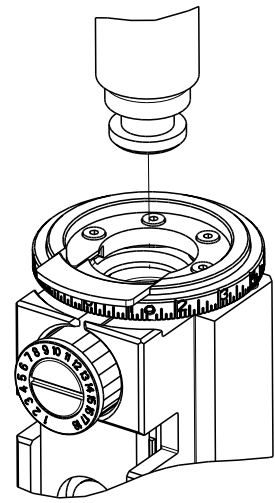



ATLANTIC VERSION
Shown on sheets 1 of 4 & 2 of 4
(Pacific version shown on sheets 3 of 4 & 4 of 4)

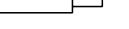

DIMENSIONS:		TOLERANCES UNLESS OTHERWISE SPECIFIED:		DWN B. WEAVER 08SEP2015		TE Connectivity	
mm		0 PLC ±		CHK G. BAILEY 08SEP2015		Harrisburg, PA 17105-3608	
		1 PLC ±		APVD G. BAILEY 08SEP2015		NAME	
		2 PLC ±		PRODUCT SPEC		Ocean Side Feed	
		3 PLC ±		APPLICATION SPEC		Applicator	
		4 PLC ±		WEIGHT		SIZE	
		ANGLES ±		MATERIAL		CAGE CODE DRAWING NO	
		FINISH		Customer Accessible Production Drawing		A1 00779 C=2266929	
				SCALE		RESTRICTED TO	
				1:2		SHEET 2 OF 4	
						REV C	




THIS DRAWING IS UNPUBLISHED.	RELEASED FOR PUBLICATION	2015
© COPYRIGHT 2015 BY TYCO ELECTRONICS CORPORATION. ALL RIGHTS RESERVED.		

PART NUMBER	REVISION	DESCRIPTION	FEED TYPE
2-2266929-1	C	FINE CRIMP HEIGHT ADJUST	MECHANICAL
2-2266929-2	C	FINE CRIMP HEIGHT ADJUST	PNEUMATIC
7-2266929-7	A	CRIMP TOOLING KIT	-



APPLICATOR DATA		
CRIMP	SIZE	TYPE
WIRE	1.78 mm [.070]	F
STABILIZER	2.03 mm [.080]	F
INSUL	2.03 mm [.080]	F
APPLICATOR INSTRUCTIONS 408-35042		

TERMINAL DATA: TE TERMINAL		TE CRIMP SPECIFICATION	
TERMINAL NAME: .070 SERIES		TAB CONTACT	
WIRE STRIP LENGTH 2.50-3.00 mm [.098-.118 IN]			INSULATION DIAMETER RANGE Ø1.00-1.50 mm [.039-.059 IN]
TERMINAL APPLICATION SPECIFICATION		114-5157-1	-
	-	-	-
TERMINALS APPLIED			
TE TERMINAL	TE TERMINAL	TE TERMINAL	TE TERMINAL
175207-1	175207-2	175207-3	

WIRE SIZE			CRIMP HEIGHT mm [INCH]		CRIMP HEIGHT REFERENCE SETTING
0.50mm2			1.17+/-0.05 [0.046+/- .002]		6.1
0.30mm2			1.09+/-0.05 [0.043+/- .002]		6.6





1. RECOMMENDED SPARE PARTS
2. REFER TO SUPPLIED INSTRUCTION SHEET FOR CLEANING, LUBRICATION AND STORAGE OF APPLICATOR.
3. APPLY PART NUMBER 2-23419-6 LOCTITE TO THREADS OF ITEM 242.
4. CRIMP HEIGHT REFERENCE SETTING WAS THE SETTING USED WHEN THE APPLICATOR WAS QUALIFIED AT THE FACTORY. ADJUSTMENT MAY BE NECESSARY WHEN RUNNING APPLICATOR IN THE FIELD.
5. SEE TERMINAL APPLICATION SPEC FOR CORRECT STABILIZER CRIMP HEIGHT.
6. UNLESS SPECIFIED OTHERWISE TORQUE VALUES SHALL BE USED PER DOCUMENT, 101-35000.

*WARNING
ON INSTALLATION, SET WIRE DISC TO CRIMP HEIGHT REFERENCE SETTING
FOR LARGEST WIRE SIZE. CRIMP HEIGHT REFERENCE SETTINGS GREATER
THAN THE VALUE SHOWN MAY CAUSE DAMAGE TO THE CRIMP TOOLING.
REFER TO THE INSTRUCTION SHEET FOR PROPER SETUP AND ADJUSTMENTS.

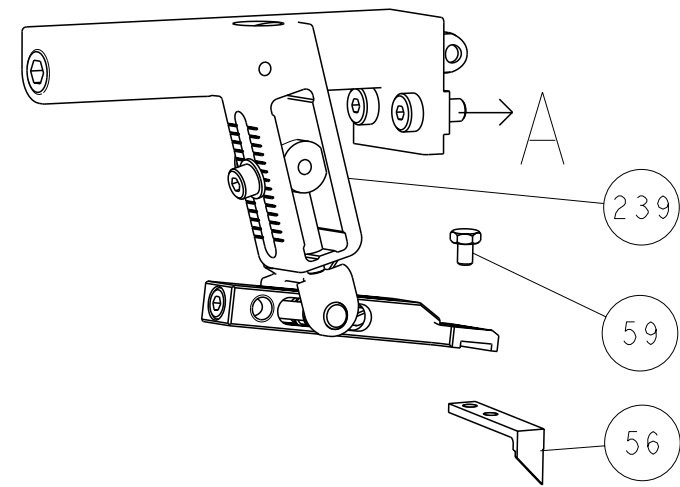
PACIFIC VERSION
 Shown on sheets 3 of 4 & 4 of 4
 (Atlantic version shown on sheets 1 of 4 & 2 of 4)

[illegible]

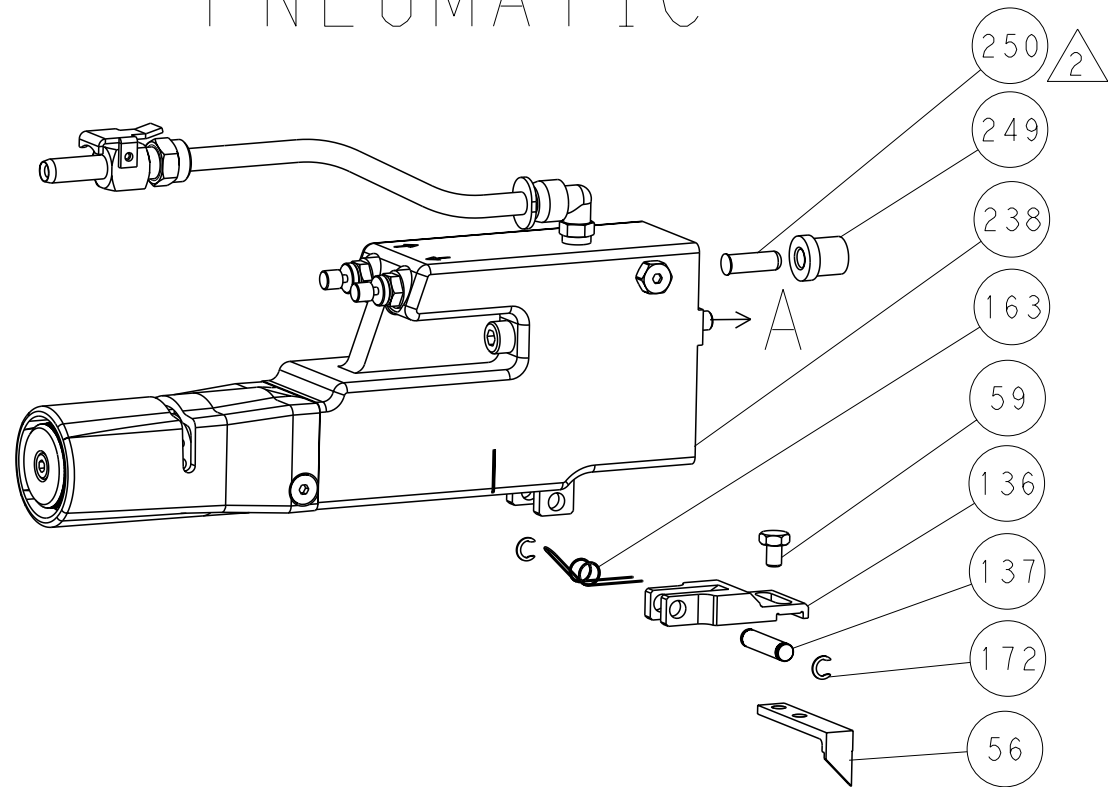
-	1	1	2119786-3	CRIMPER, STABILIZER "F" PREMIUM	258
-	1	1	2119348-5	SNAIL CAM, STABILIZER CRIMP ADJUSTMENT	256
-	2	2	2079844-1	SPRING PLUNGER, M4	255
-	1	1	2119347-1	KNOB, STABILIZER CRIMP ADJUSTMENT	254
-	1	1	18032-1	SCR, SET, FLT PNT, M3 X 5.0	253
-	1	-	2119640-1	PUSH ROD, AIR FEED	250
-	1	-	1803259-1	BUSHING, FLANGED	249
-	1	1	2119082-5	CAM, SNAIL, INSULATION ADJUSTMENT	244
-	1	1	2079764-1	WASHER, WAVE SPRING, CREST-TO-CREST	243
-	1	1	2119083-1	RETAINER, INSULATION DIAL	242
-	1	1	7-18023-7	SCR, SKT HD CAP M3 X 4.0	241
-	-	1	2119580-1	MECHANICAL FEED ASSEMBLY	233
-	1	-	2063440-1	AIR FEED MODULE	238
-	2	-	21045-3	RING, RETAIN, EXTERN, 3/16 CRESCENT	172
-	REF	REF	9949770-2	COUNTER, MAGNETIC	164
-	1	-	240638-1	SPRING, FEED FINGER	163
-	1	-	2119641-2	FEED CAM, AIR FEED	151
-	1	1	2168083-8	SCR, SKT HD CAP, RoHS, M4 X 16	144
-	4	4	2168083-9	SCR, SKT HD CAP, RoHS, M4 X 20	143
-	-	1	2119653-2	FEED CAM, POST FEED	142
-	1	1	1-1803583-0	APPLICATOR BASIC ASSEMBLY, SF	141
-	1	1	1803516-1	RAM ASSEMBLY, SF PACIFIC	140
-	1	-	3-23627-7	PIN, RETAIN, GRVD, 3/16 X .854	137
-	1	-	2119799-1	HOLDER, FEED FINGER, AF	136
-	1	1	2844908-1	SCREW, LOCKING	99
-	1	1	2844907-1	POST, LOCKING	98
-	1	1	455888-7	SPACER, CRIMPER	82
-	1	1	5-547505-2	SPRING, COMPRESSION	77
-	1	1	854769-1	HOLDER, INS	74
-	1	1	1803607-1	DOCUMENTATION PACKAGE	71
-	1	1	2119740-1	TAG, IDENTIFICATION	67
-	2	2	2168078-1	SCREW, DRIVE, RH, RoHS, 2 x .188	66
-	1	1	5-18022-5	SCR, HEX HD CAP, M4 X 6.0	59
-	1	1	21028-2	PIN, SLOTTED SPRING .062 X .250	58
-	1	1	1338685-1	PAWL, FEED	56
-	2	2	1-2168083-0	SCR, SKT HD CAP, RoHS, M4 X 10	53
-	1	1	5018030-1	NUT, HEX, REG, RoHS, M3	52
-	1	1	811242-5	BUMPER, HOLD DOWN	51
-	1	1	690753-2	SPACER, TONKER	50
-	1	2	18023-9	SCR, SKT HD CAP M4 X 6.0	49
-	-	1	2119652-1	FEED CAM, PRE FEED	48
-	1	1	1803602-1	SCR, BHSC, RoHS (M8 X 25)	41
-	1	1	1752356-3	SUPPORT, TERMINAL	34
-	2	2	2079383-5	SCR, BHSC, RoHS (M4 X 20)	33
-	2	2	2-2844962-4	SPACER, CYLINDRICAL, STRIP GUIDE	30
-	1	1	2844992-1	ASSEMBLY, STRIP GUIDE	29
-	1	1	2119797-3	SPACER, CRIMPER, SPECIAL	28
-	1	1	1320928-2	STRIP GUIDE	24
-	1	1	2168083-2	SCR, SKT HD CAP, RoHS, M4 X 8.0	21
-	2	2	1-18028-2	WASHER, FLAT, REG M4	20
-	1	1	2119533-1	STRIPPER, SIDE FEED	19
-	1	1	2119806-1	INSERT, SHEAR	13
-	1	1	3-22280-3	SPRING, COMPRESSION	12
-	1	1	1-356885-4	STOP, SHEAR	11
-	1	1	2119805-1	SHEAR HOLDER, FRONT	10
-	1	1	1803095-1	FLOATING SHEAR, FRONT -	9
1	1	1	5-1633919-3	ANVIL, COMBINATION	8
-	-	-	-	-	6
-	1	1	2119790-1	SHEAR DEPRESSOR, STAB. CRIMP ADJ.	5
-	1	1	1-238011-8	BLOCK, CRIMPER SPACER	4
1	1	1	2119794-5	CRIMPER, INSUL F PREM, SPECIAL	3
-	1	1	455888-9	SPACER, CRIMPER	2
1	1	1	4-456404-6	CRIMPER, WIRE PREMIUM	1

<small>THIS DRAWING IS A CONTROLLED DOCUMENT FOR THE INFORMATION OF THE CUSTOMER. IT IS THE CUSTOMER'S RESPONSIBILITY TO OBTAIN THE LATEST EDITION OF THE DRAWING. THE CUSTOMER SHALL BE CONTACTED FOR THE LATEST EDITION OF THE DRAWING.</small>		<small>DWG NO</small> 08SEP2015 <small>REV</small> 1 <small>DATE</small> 08SEP2015 <small>CHKD</small> G. BAILEY <small>APPD</small> G. BAILEY		 TE Connectivity Harrisburg, PA 17105-3608	
DIMENSIONS: mm		TOLERANCES, UNLESS OTHERWISE SPECIFIED: 0 PLC ±.1 1 PLC ±.1 2 PLC ±.1 3 PLC ±.1 4 PLC ±.1 ANGLES ±.1° FINISH		NAME Ocean Side Feed Applicator	
		PRODUCT SPEC APPLICATION SPEC		SIZE CAGE CODE DRAWING NO	
MATERIAL -		WEIGHT -		A 00779 C=2266929 RESTRICTED TO	
Customer Accessible Drawing		SCALE 1:2		SHEET 3 OF 4 REV C	

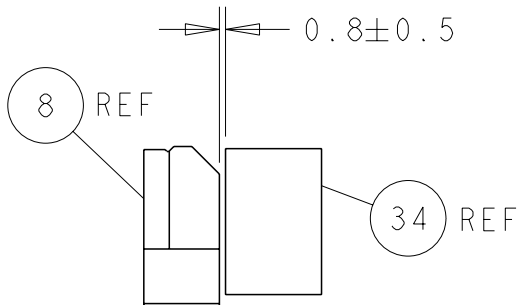
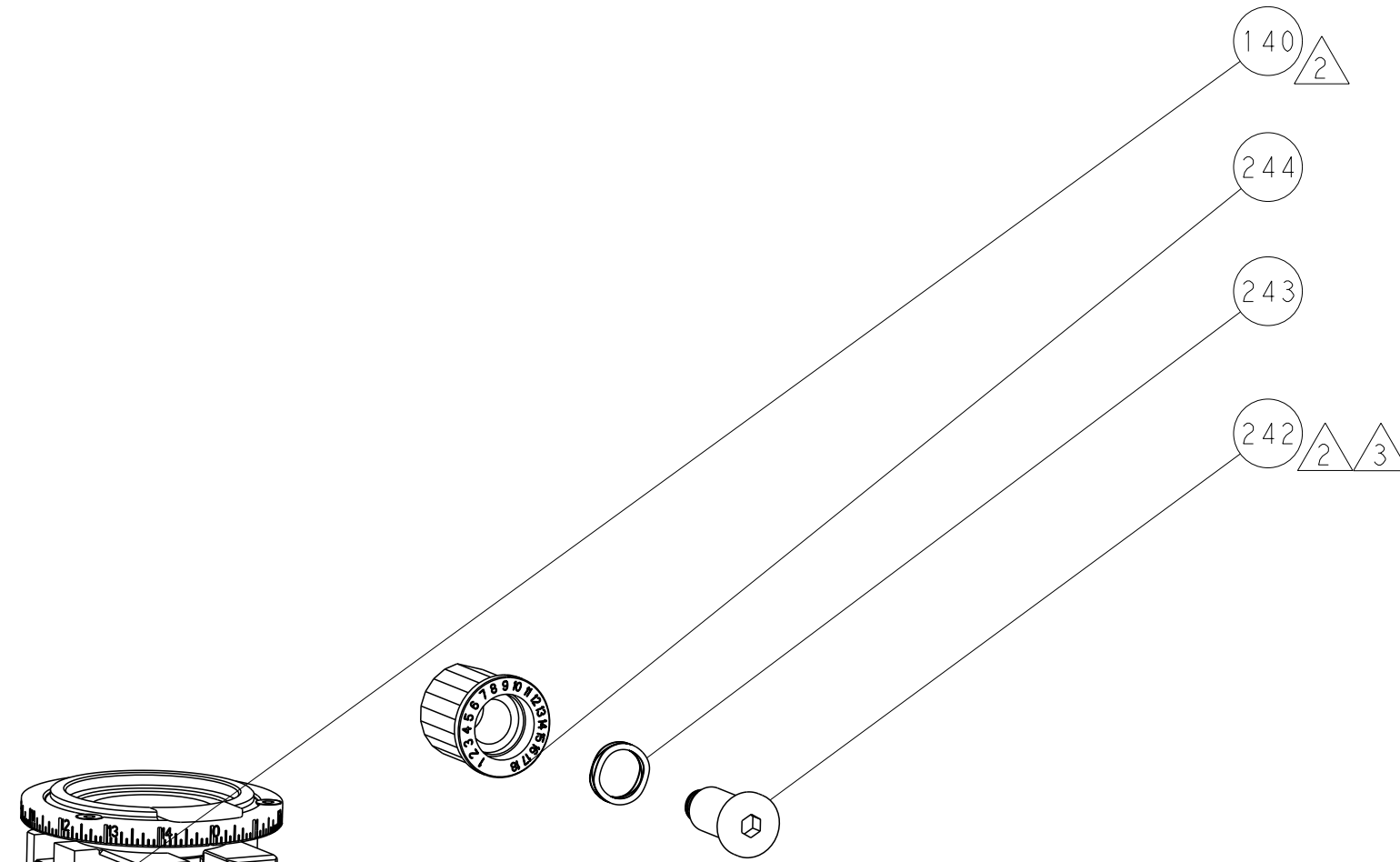
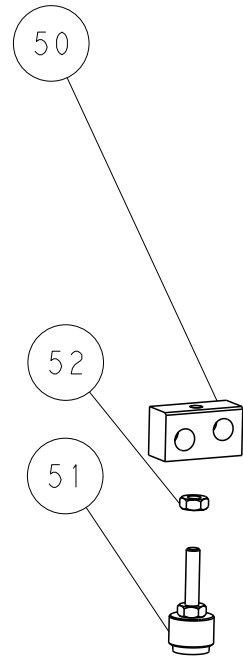
FEED TYPE
MECHANICAL



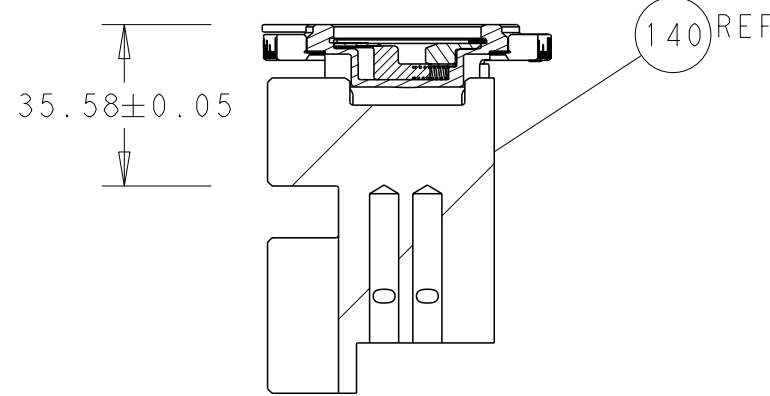
PNEUMATIC



53

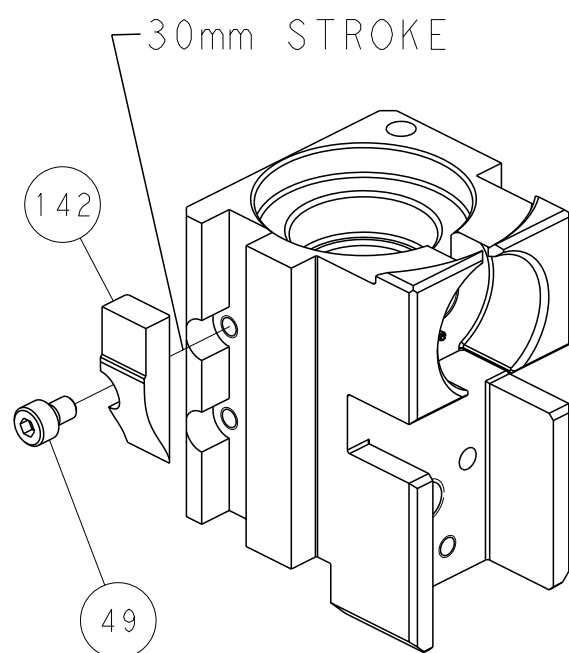


TERMINAL SUPPORT LOCATION

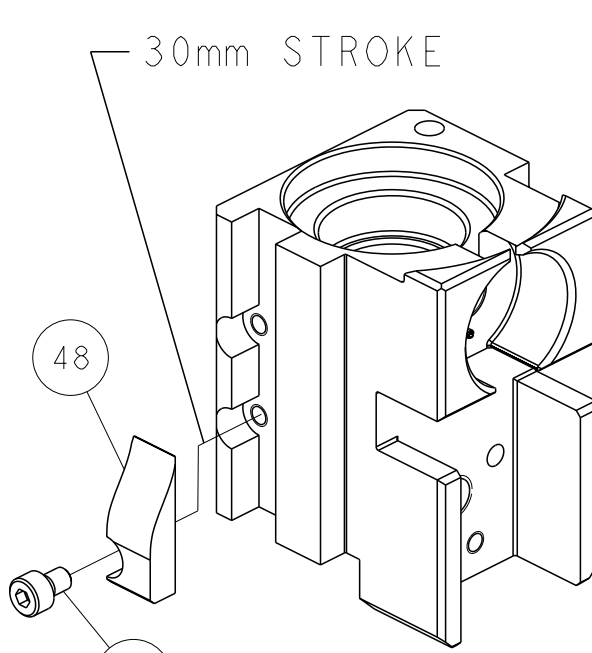


RAM SET-UP

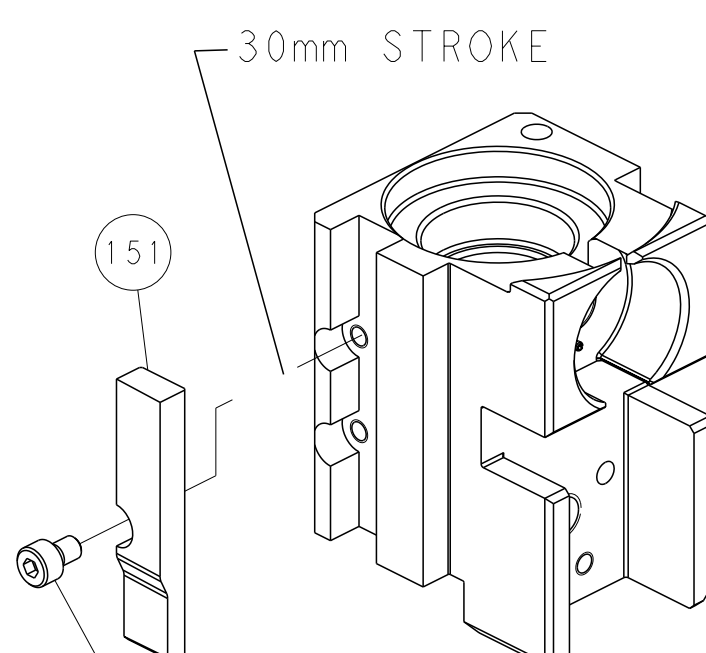
CAM POSITIONS



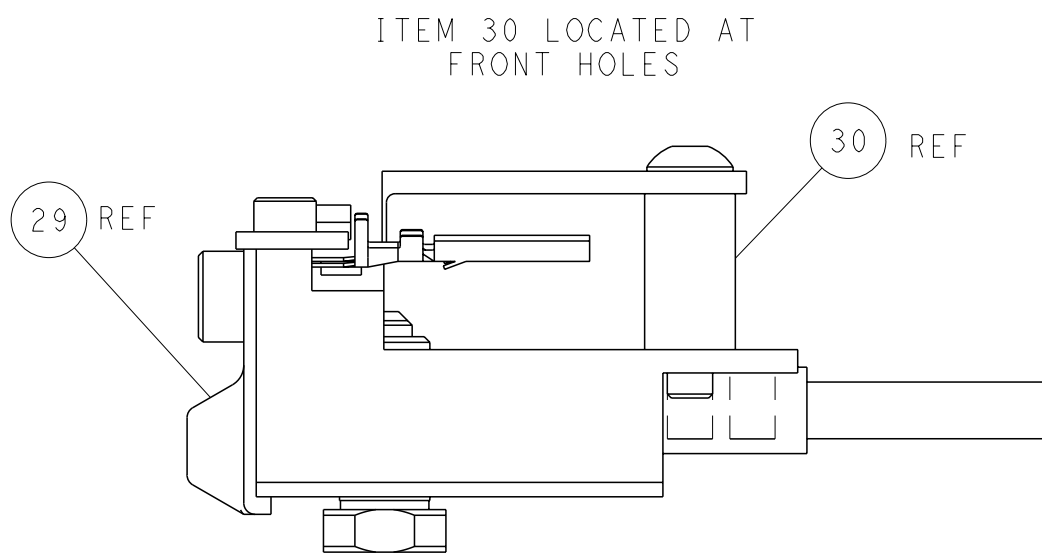
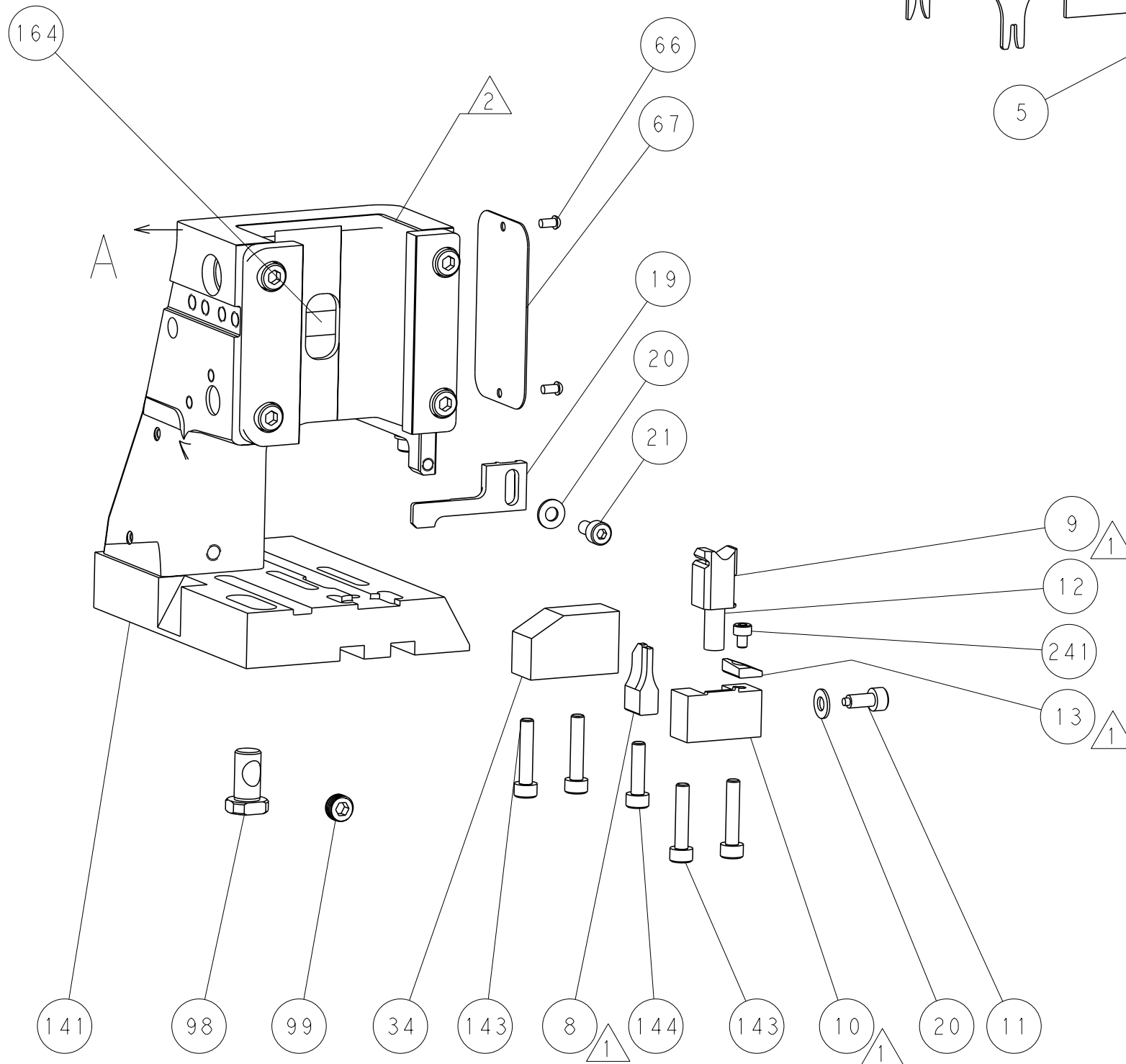
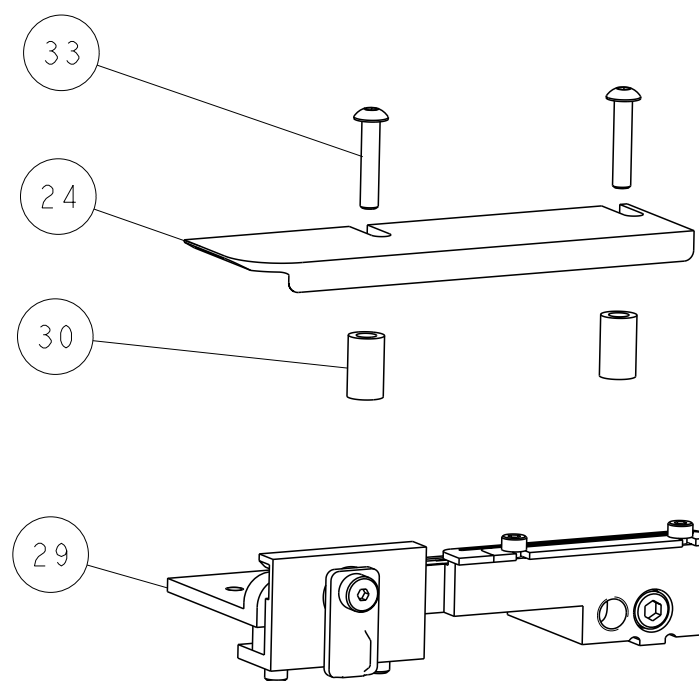
MECHANICAL
POST FEED



MECHANICAL
PRE FEED



AIR FEED



FEED TRACK POSITION
GUIDE BY DOUBLE LOCK BARREL

PACIFIC VERSION
Shown on sheets 3 of 4 & 4 of 4
(Atlantic version shown on sheets 1 of 4 & 2 of 4)

THIS DRAWING IS A CONTROLLED DOCUMENT FOR TYCO ELECTRONICS CORPORATION. IT IS SUBJECT TO CHANGE AND TO CONTROL AND ENGINEERING DISCRETION. SHOULD BE CONTACTED FOR THE LATEST REVISION.		DWN B. WEAVER 08SEP2015	TE Connectivity Harrisburg, PA 17105-3608	
DIMENSIONS: mm		CHK G. BAILEY 08SEP2015	NAME Ocean Side Feed Applicator	
TOLERANCES UNLESS OTHERWISE SPECIFIED: 0 PLC ± 1 PLC ± 2 PLC ± 3 PLC ± 4 PLC ± ANGLES ± FINISH ±		APVD G. BAILEY 08SEP2015	SIZE A1	
MATERIAL -		PRODUCT SPEC -	CAGE CODE 00779	
		APPLICATION SPEC -	DRAWING NO C=2266929	
		WEIGHT -	RESTRICTED TO -	
		Customer Accessible Production Drawing	SCALE 1:2	
			SHEET 4	
			OF 4	
			REV C	

Mouser Electronics

Authorized Distributor

Click to View Pricing, Inventory, Delivery & Lifecycle Information:

[TE Connectivity:](#)

[7-2266929-7](#)