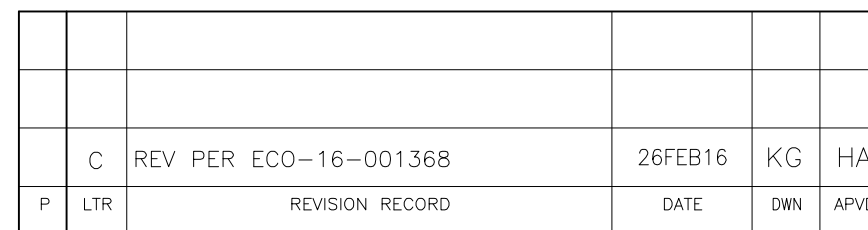


- KEYING CODE AA THRU DD (SEE TABLE I)
- SECONDARY POSITION, P/S/D= PIN/SOCKET CONTACT SEE TABLE II, DUMMY INSERT (SEE TABLE III)
- PRIMARY POSITION, P/S/D= PIN/SOCKET CONTACT SEE TABLE II, DUMMY INSERT (SEE TABLE III)
- 02= 1" CONNECTOR SIZE 22 INSERT (SEE TABLE III)
- 06= 1" CONNECTOR SIZE 16 INSERT (SEE TABLE III)
- 22= 2" CONNECTOR SIZE 22 PRIMARY & SECONDARY INSERTS (SEE TABLE III)
- 23= 2" CONNECTOR SIZE 22 PRIMARY INSERT & SECONDARY DUMMY INSERT (SEE TABLE III)
- 24= 2" CONNECTOR PRIMARY DUMMY INSERT & SECONDARY SIZE 22 INSERT (SEE TABLE III)
- 26= 2" CONNECTOR SIZE 22 PRIMARY INSERT & SIZE 16 SECONDARY INSERT (SEE TABLE III)
- 62= 2" CONNECTOR SIZE 16 PRIMARY INSERT & SIZE 22 SECONDARY INSERT (SEE TABLE III)
- 66= 2" CONNECTOR SIZE 16 PRIMARY & SECONDARY INSERTS (SEE TABLE III)
- 67= 2" CONNECTOR SIZE 16 PRIMARY & SECONDARY DUMMY INSERTS (SEE TABLE III)
- 68= 2" CONNECTOR PRIMARY DUMMY INSERT & SECONDARY SIZE 16 INSERT (SEE TABLE III)
- C= CADMIUM PLATED SHELL (SEE TABLE IV)
- N= NICKEL PLATED SHELL (SEE TABLE IV)
- A= BLACK ANODIZED PLATED SHELL (SEE TABLE IV)
- J= STANDARD SHELL (SEE TABLE IV)
- S= EME SHELL (SEE TABLE IV)
- P= PLUG (SEE TABLE IV)
- R= RECEPTACLE (SEE TABLE IV)
- F= FLANGED RECEPTACLE (SEE TABLE IV)
- 1= 1" INCH CONNECTOR
- 2= 2" INCH CONNECTOR
- KIT
- MTC CONNECTOR, POWER BLOCK




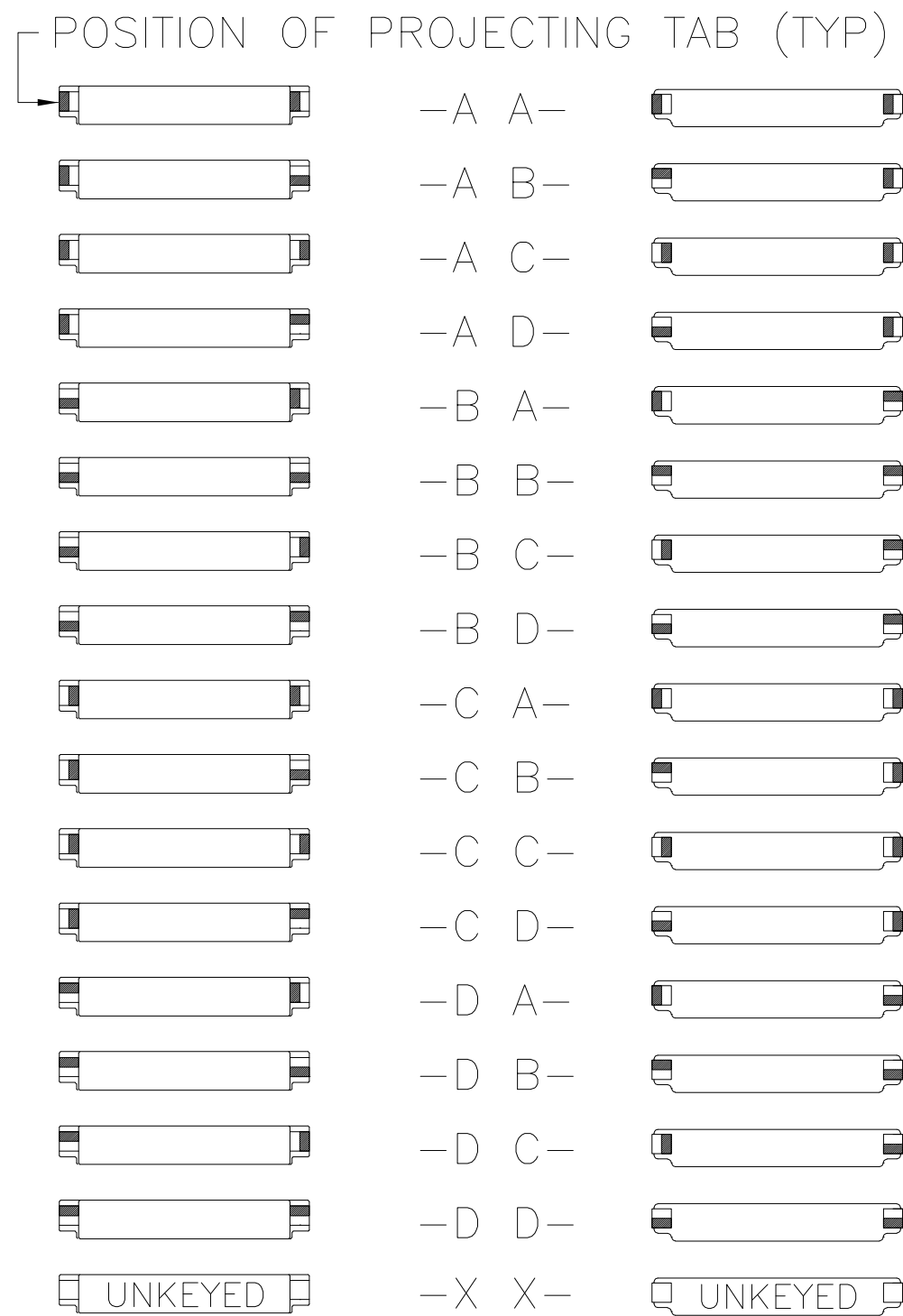
DWN	26FEB2016	MATERIAL	HEAT TREAT
K.GLATFELTER		-	-
CHK	26FEB2016	-	-
H.AGANZA		 TE Connectivity	
APVD	26FEB2016		
H.AGANZA			
NAME			
MTCP POWER BLOCK CONNECTOR KIT			
SCALE	SIZE	DRAWING NO	SHEET OF REV
NTS	A2	MTCPKXXXXXXXXXX	1 OF 4 C

TABLE I



RECEPTACLE	CODE	PLUG
15	15	15
20	20	20
25	25	25
30	30	30
35	35	35
40	40	40
45	45	45
50	50	50
55	55	55
60	60	60
65	65	65
70	70	70
75	75	75
80	80	80
85	85	85
90	90	90
95	95	95
100	100	100

KEYING CODES

TABLE II



MTCP CRIMP CONTACTS			
	SIZE	RAYCHEM P/N	MILITARY P/N
PIN	16	CTA-0079	M39029/58-364
	22	CTA-0166	
SOCKET	16	CTA-0078	M39029/57-358
	22	CTA-0165	
SEAL PLUGS	16		MS27488-16
	22		MS27488-22


TABLE III

MTCP CRIMP INSERTS

CODE	GENDER	CONN. SIZE	CONTACT SIZE	TYPE	PART NUMBER
02	PIN	1 INCH	22	--	MTCP-122-20P
	SOCKET	1 INCH	22	--	MTCP-122-20S
06	PIN	1 INCH	16	--	MTCP-116-05P1
	SOCKET	1 INCH	16	--	MTCP-116-05S1
22	PIN	2 INCH	22	PRIMARY	MTCP-122-20P1
	SOCKET	2 INCH	22	PRIMARY	MTCP-122-20S
	PIN	2 INCH	22	SECONDARY	MTCP-122-20P2
	SOCKET	2 INCH	22	SECONDARY	MTCP-122-20S2
23	PIN	2 INCH	22	PRIMARY	MTCP-122-20P1
	SOCKET	2 INCH	22	PRIMARY	MTCP-122-20S1
	DUMMY	2 INCH		SECONDARY	D-659-0034-04
	DUMMY	2 INCH		SECONDARY	D-659-0034-04
24	DUMMY	2 INCH		PRIMARY	D-659-0034-04
	DUMMY	2 INCH		PRIMARY	D-659-0034-04
	PIN	2 INCH	22	SECONDARY	MTCP-122-20P2
	SOCKET	2 INCH	22	SECONDARY	MTCP-122-20S2
26	PIN	2 INCH	22	PRIMARY	MTCP-122-20P1
	SOCKET	2 INCH	22	PRIMARY	MTCP-122-20S1
	PIN	2 INCH	16	SECONDARY	MTCP-116-05P2
	SOCKET	2 INCH	16	SECONDARY	MTCP-116-05S2
62	PIN	2 INCH	16	PRIMARY	MTCP-116-05P1
	SOCKET	2 INCH	16	PRIMARY	MTCP-116-05S1
	PIN	2 INCH	22	SECONDARY	MTCP-122-20P2
	SOCKET	2 INCH	22	SECONDARY	MTCP-122-20S2
66	PIN	2 INCH	16	PRIMARY	MTCP-116-05P1
	SOCKET	2 INCH	16	PRIMARY	MTCP-116-05S1
	PIN	2 INCH	16	SECONDARY	MTCP-116-05P2
	SOCKET	2 INCH	16	SECONDARY	MTCP-116-05S2
67	PIN	2 INCH	16	PRIMARY	MTCP-116-05P1
	SOCKET	2 INCH	16	PRIMARY	MTCP-116-05S1
	DUMMY	2 INCH		SECONDARY	D-659-0034-04
	DUMMY	2 INCH		SECONDARY	D-659-0034-04
68	DUMMY	2 INCH		PRIMARY	D-659-0034-04
	DUMMY	2 INCH		PRIMARY	D-659-0034-04
	PIN	2 INCH	16	SECONDARY	MTCP-116-05P2
	SOCKET	2 INCH	16	SECONDARY	MTCP-116-05S2

	—	SEE SHEET 1	—	—	—
P	LTR	REVISION RECORD	DATE	DWN	APV

DIMENSIONS:		TOLERANCES UNLESS OTHERWISE SPECIFIED	
INCHES			
	0 PLC	±	—
	1 PLC	±	—
	2 PLC	±	—
	3 PLC	±	—
	4 PLC	±	—
ANGLES ± —			
D SURFACE TEXTURE			

DWN	26FEB2016	MATERIAL	HEAT TREAT
K.GLATFELTER		-	-
CHK	26FEB2016	-	-
H.AGANZA		 TE Connectivity	
APVD	26FEB2016		
H.AGANZA			
NAME			
MTCP POWER BLOCK CONNECTOR KIT			
SCALE	SIZE	DRAWING NO	SHEET 2 OF 4
NTS	A2	MTCPKXXXXXXXXXXXX	REV C

THIS INFORMATION IS CONFIDENTIAL AND PROPRIETARY TO TYCO ELECTRONICS CORPORATION AND ITS WORLDWIDE SUBSIDIARIES AND AFFILIATES (TE). IT MAY NOT BE DISCLOSED TO ANYONE, OTHER THAN TE PERSONNEL, WITHOUT AUTHORIZATION FROM TE (www.te.com).

THIS DRAWING IS A CONTROLLED DOCUMENT.

DWG NO
MTCPKXXXXXXXXXX

USED ON

TABLE IV					
MTCP CONNECTOR SHELLS					
STYLE	TYPE	SIZE	CADMIUM PLATING Δ	NICKEL PLATING Δ	BLACK ANODIZE PLATING Δ
STANDARD	PLUG	1"	MTC100-JH1-P34	MTC100-JH1-P22	MTC100-JH1-P12
		2"	MTC100-JH2-P34	MTC100-JH2-P22	MTC100-JH2-P12
	RECEP.	1"	MTC100-JH1-R34	MTC100-JH1-R22	MTC100-JH1-R12
		2"	MTC100-JH2-R34	MTC100-JH2-R22	MTC100-JH2-R12
	FLANGED RECEP.	1"	MTC100-JH1-F34	MTC100-JH1-F22	MTC100-JH1-F12
		2"	MTC100-JH2-F34	MTC100-JH2-F22	MTC100-JH2-F12
EME	PLUG	1"	MTC100-SH1-P34	MTC100-SH1-P22	NOT AVAILABLE
		2"	MTC100-SH2-P34	MTC100-SH2-P22	NOT AVAILABLE
	RECEP.	1"	MTC100-SH1-R34	MTC100-SH1-R22	NOT AVAILABLE
		2"	MTC100-SH2-R34	MTC100-SH2-R22	NOT AVAILABLE
	FLANGED RECEP.	1"	MTC100-SH1-F34	MTC100-SH1-F22	NOT AVAILABLE
		2"	MTC100-SH2-F34	MTC100-SH2-R22	NOT AVAILABLE

1. THE DUMMY INSERT IS DESIGNED TO FIT INSIDE THE 1 INCH CONNECTOR AND ALSO CAN BE USED AS A PRIMARY OR SECONDARY POSITION FOR THE 2 INCH CONNECTOR. (SEE TABLE III)
2. THE 1 INCH MTC HOUSINGS WILL ACCEPT SIZE 16 PRIMARY POWER BLOCK INSERTS ONLY.
3. MTC POWER BLOCK SIZE 16 INSERTS AND MTC100 CRIMP SIZE 22 INSERTS ARE SUPPLIED WITHOUT CONTACTS. SEALING PLUGS, OR INSERTION/EXTRACTION TOOL. THESE ITEMS MAY BE ORDERED SEPARATELY OR SOME OF THEM CAN BE SUPPLIED WITH THE INSERT BY ADDING THE APPROPRIATE MOD NUMBER AFTER THE PART NUMBER.
4. FOR ADDITIONAL DETAILS REGARDING PARTS SHOWN HEREON, REFER TO THE APPROPRIATE TYCO ELECTRONICS/RAYCHEM SPECIFICATION CONTROL DRAWING.
5. INSERTS MAY BE INSTALLED INTO EITHER PLUG OR RECEPTACLE HOUSINGS AS REQUIRED.
6. TERMINATION AND ASSEMBLED PROCEDURE:


A-USE ES-61413 FOR SIZE 22 CONTACTS.

B-USE ES-71027 AS REFERENCE FOR SIZE 16 CONTACTS.

Δ NICKEL PLATED SHELLS HAVE "L" CABLE CLAMPS OTHER SHELLS HAVE FLAT CABLE CLAMPS REFER TO MTC100-XHX-XXX-XXX PRINT FOR MORE DETAILS.

P	LTR	REVISION RECORD	DATE	DWN	APVD

DIMENSIONS: INCHES		TOLERANCES UNLESS OTHERWISE SPECIFIED:	
	0 PLC	±	-
	1 PLC	±	-
	2 PLC	±	-
	3 PLC	±	-
ANGLES ±		-	
SURFACE TEXTURE			

DWN	26FEB2016	MATERIAL	HEAT TREAT
K.GLATFELTER		-	-
CHK	26FEB2016	-	-
H.AGANZA		 TE Connectivity	
APVD	26FEB2016		
H.AGANZA			
NAME			
MTCP POWER BLOCK CONNECTOR KIT			
SCALE	SIZE	DRAWING NO	SHEET
NTS	A2	MTCPKXXXXXXXXXX	3 OF 4
			REV
			C

THIS INFORMATION IS CONFIDENTIAL AND PROPRIETARY TO TYCO ELECTRONICS CORPORATION AND ITS WORLDWIDE SUBSIDIARIES AND AFFILIATES (TE). IT MAY NOT BE DISCLOSED TO ANYONE, OTHER THAN TE PERSONNEL, WITHOUT AUTHORIZATION FROM TE (www.te.com).

THIS DRAWING IS A CONTROLLED DOCUMENT.
DWG NO MTCPKXXXXXXXXXX

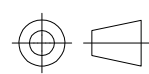
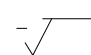
USED ON _____


TABLE V				
MTCP CRIMP CONNECTOR TOOLS				
COMPONENT	SIZE	TOOL TYPE	TOOL P/N	MANUFACTURER
INSERTS	22	INS./EXTR. METAL	CTA-0161	RAYCHEM CORP.
	16	INS./EXTR. METAL	CTA-0161	RAYCHEM CORP.
CONTACTS	22	INS./EXTR. PLASTIC	CTA-1160	RAYCHEM CORP.
	22	EXTRACTION METAL	ATBO 2062	ASTRO TOOL CO.
	22	INSERTION METAL	ATBO 1062	ASTRO TOOL CO.
	16	INS./EXTR. PLASTIC	M81969/14-03	MIL. SPEC.
	16	EXTRACTION METAL	DRK83-16	DANIELS MFG. CO.
	16	INSERTION METAL	DAK83-16	DANIELS MFG. CO.
	22	CRIMP BASIC	M22520/2-01	MIL. SPEC.
	22	PIN POSITIONER	CE-1605900	RAYCHEM CORP.
			K817-11	DANIELS MFG. CO.
	22	SOCKET POSITIONER	CE-1606000	RAYCHEM CORP.
			K818-11	DANIELS MFG. CO.
	16	CRIMP BASIC	M22520/1-01	MIL. SPEC.
	16	PIN POSITIONER	M22520/1-04	MIL. SPEC.
	16	SOCKET POSITIONER	M22520/1-04	MIL. SPEC.
RECEPTACLE SHELL COUPLING ATTACHMENT SCREW = 7/64 ALLEN WRENCH				
PLUG SHELL COUPLING DRIVER = 7/64 ALLEN WRENCH				
STRAIN RELIEF CABLE CLAMPS = #1 PHILLIPS SCREWDRIVER				

PERFORMANCE

MTCP MEETS RAYCHEM SPECIFICATION C-6115

P	LTR	SEE SHEET 1	-	-	-		
REVISION RECORD			DATE	DWN	APVD		

DIMENSIONS: INCHES		TOLERANCES UNLESS OTHERWISE SPECIFIED:	
		0 PLC	± -
		1 PLC	± -
		2 PLC	± -
		3 PLC	± -
		4 PLC	± -
ANGLES ±		-	
SURFACE TEXTURE			

DWN K.GLATFELTER		26FEB2016	MATERIAL — —		HEAT TREAT — —		
CHK H.AGANZA		26FEB2016	 TE Connectivity				
APVD H.AGANZA		26FEB2016					
NAME		MTCP POWER BLOCK CONNECTOR KIT					
SCALE NTS	SIZE A2	DRAWING NO MTCPKXXXXXXXXXX			SHEET 4	OF 4	REV C

Mouser Electronics

Authorized Distributor

Click to View Pricing, Inventory, Delivery & Lifecycle Information:

[TE Connectivity:](#)

[164526-000](#)