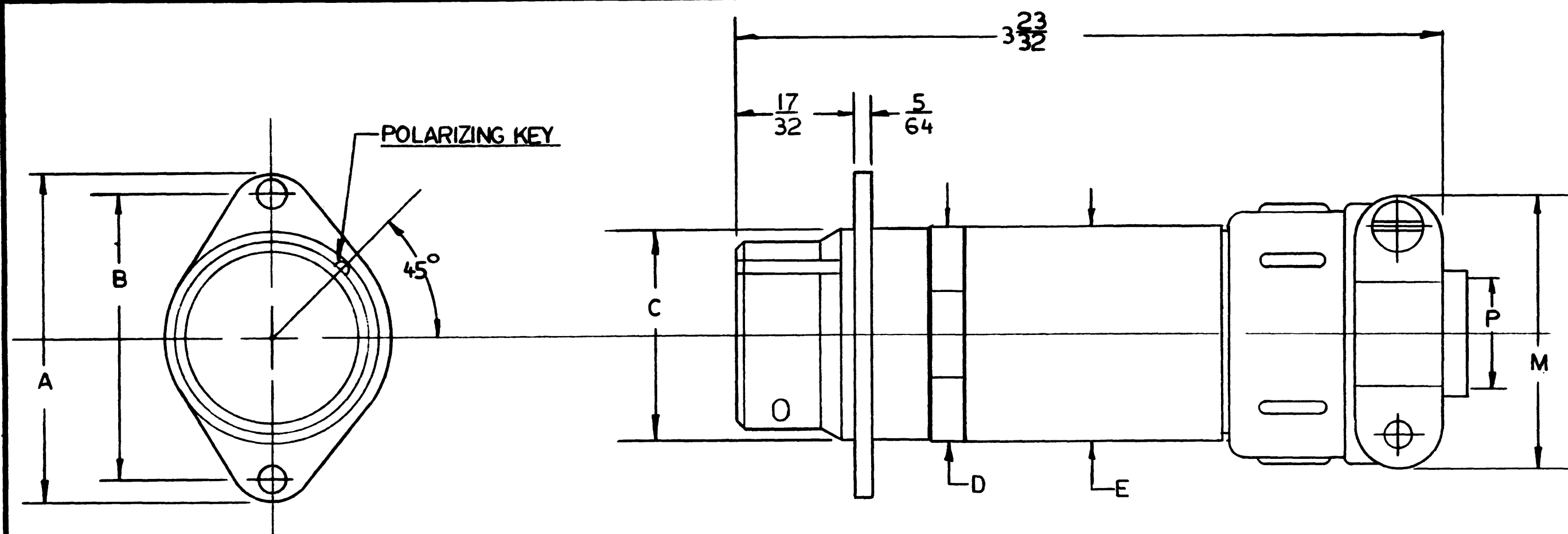


MO-220



SHELL SIZE	A	B	C	D	E	M	P
-7 ^P _S	$1 \frac{1}{4}$	$1 \frac{1}{64}$	$\frac{11}{16}$	$\frac{11}{16}$	$\frac{11}{16}$	$\frac{7}{8}$	$\frac{7}{32}$
-19 ^P _S	$1 \frac{15}{32}$	$1 \frac{9}{32}$	$\frac{15}{16}$	$\frac{61}{64}$	$\frac{61}{64}$	$1 \frac{5}{32}$	$\frac{7}{16}$

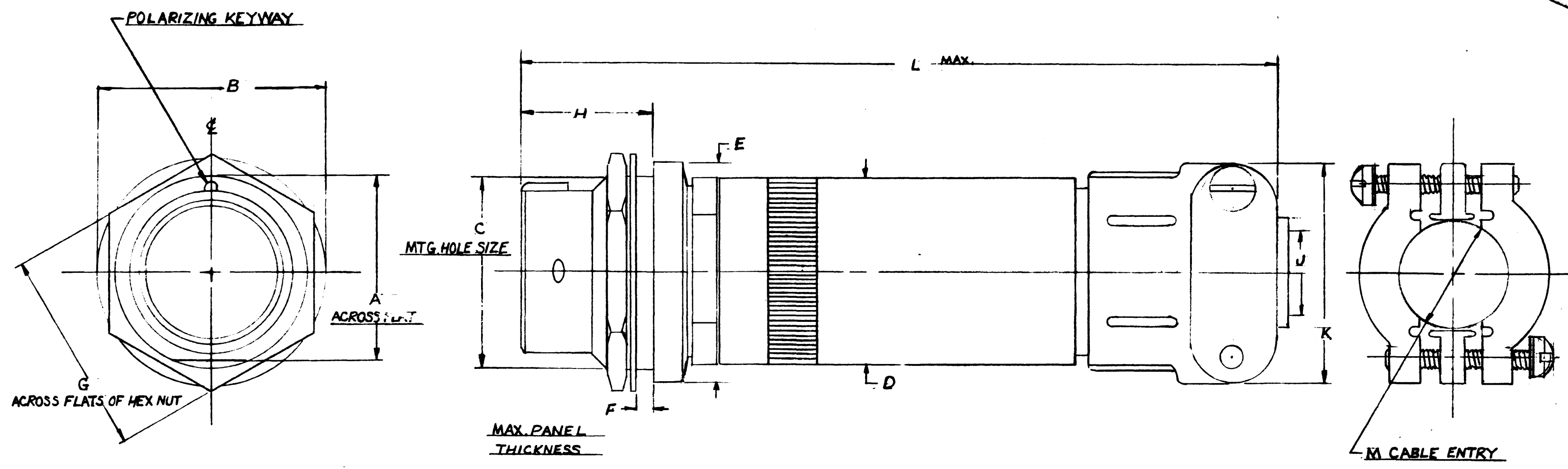
1. DE-BURR ALL SHARP EDGES		TOLERANCES FRACTIONS $\pm .015$ DECIMALS $\pm .005$ ANGLES $\pm \frac{1}{2}^\circ$ UNLESS OTHERWISE SPECIFIED	
MATERIAL	SPEC.		
MATERIAL	SPEC.		
MATERIAL	SPEC.		
FORGING	SPEC.	WT.	

THE DEUTSCH COMPANY
7000 AVALON BLVD., LOS ANGELES, CALIF.

DS0031-#5 RECEPTACLE, QUICK
DISCONNECT TYPE-WITH CABLE
CLAMP, ADAPTER + EXTENSION

NO.	CHANGE	BY	DATE		
DRAWN	<i>H. Brown</i>				
CHECKED	<i>H. Brown</i>				
APPROVED	<i>[Signature]</i>				
DATE <i>1-27-59</i>		SCALE <i>~</i>			
MOD-220					
RECEIPTS DIVISION					

MOD -



SHELL SIZE	A	B	MAX. DIA. FOR SEAL	D	E	F	G	H	J	K	L	M
-7 ^P _S	21/32	7/8	.696	11/16	7/8	1/8	13/16	11/16	7/32	7/8	345/64	5/16
-12 ^P _S	25/32	1 1/16	.818	13/16	1 1/16	1/8	15/16	1 1/16	5/16	1 1/16	3 5/8	7/16
-19 ^P _S	31/32	1 3/16	1.010	1 1/8	1 5/16	1/8	1 1/16	1 1/16	7/16	1 5/16	3 7/8	3/4
-27 ^P _S	1 1/32	1 5/16	1.135	1 3/16	1 7/16	1/8	1 1/2	1 1/16	9/16	1 3/4	3 3/4	5/8
-37 ^P _S	1 7/32	1 7/8	1.260	1 1/2	1 13/16	1/8	1 5/8	1 1/16	5/8	1 15/16	3 1/2	3/4
-61 ^P _S	1 15/32	1 7/8	1.630	1 7/8	1 27/32	1/8	1 3/4	1 3/4	3/4	1 11/16	3 5/8	15/16

2. FOR AVAILABLE CONTACT ARRANGEMENTS AND ALTERNATE INSERT POSITIONS SEE 19800 ANNOTS.
1. SEE GENERAL DESCRIPTION FOR MATERIAL & MATERIAL SPECIFICATIONS.

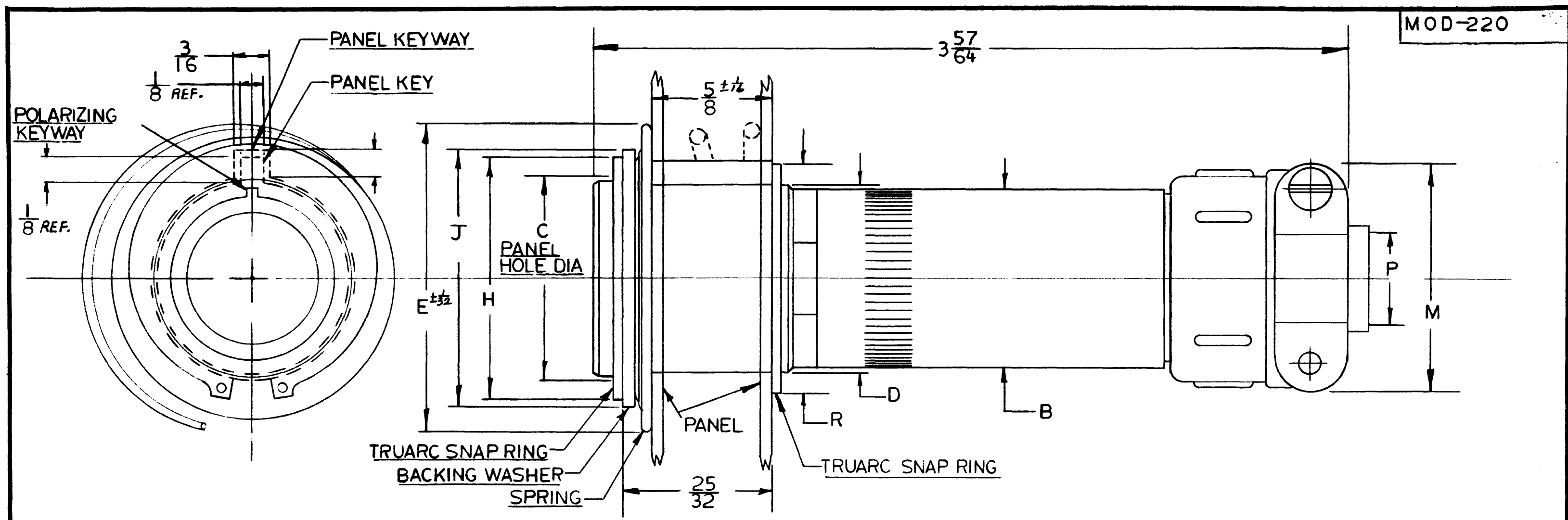
NOTES:

1. DE-BURR ALL SHARP EDGES

TOLERANCES	
FRACTIONS ± .015	DECIMALS ± .005
ANGLES ± 1/2°	
UNLESS OTHERWISE SPECIFIED	
MATERIAL	SPEC.
MATERIAL	SPEC.
MATERIAL	SPEC.
FORGING	SPEC.
WT.	

THE DEUTSCH COMPANY
7000 AVALON BLVD., LOS ANGELES, CALIF.
17056-35 (ENVELOPE)
RECEPTACLE BLKHD. MTG. TYPE
WITH CABLE CLAMP ADAPTER,
EXTENSION CABLE CLAMP

NO.	CHANGE	BY	DATE
DRAWN			
CHECKED			
APPROVED			
DATE 11-23-53	SCALE		
MOD-220			
RECEPTACLE (ENVELOPE)			



MOD-220

PART NO.	NO. CONTACTS	B	C	D	E	H	J	R	M	P	WT / LBS
DS09-3 P	3	$\frac{37}{64}$	$\frac{11}{16}$	$\frac{39}{64}$	$1\frac{3}{16}$	$\frac{43}{64}$	$\frac{7}{8}$	$\frac{3}{4}$	$\frac{13}{16}$	$\frac{1}{8}$	
DS09-7 P	7	$\frac{11}{16}$	$\frac{13}{16}$	$\frac{3}{4}$	$1\frac{5}{16}$	$\frac{31}{32}$	$1\frac{5}{32}$	$\frac{15}{16}$	$\frac{7}{8}$	$\frac{7}{32}$	
DS09-12 P	12	$\frac{13}{16}$	$\frac{61}{64}$	$\frac{55}{64}$	$1\frac{33}{64}$	$1\frac{1}{16}$	$1\frac{1}{4}$	$1\frac{5}{64}$	$1\frac{1}{16}$	$\frac{5}{16}$	
DS09-19 P	19	$\frac{61}{64}$	$1\frac{1}{16}$	1	$1\frac{41}{64}$	$1\frac{19}{64}$	$1\frac{3}{8}$	$1\frac{15}{64}$	$1\frac{5}{32}$	$\frac{7}{16}$	
DS09-27 P	27	$1\frac{3}{32}$	$1\frac{3}{16}$	$1\frac{9}{64}$	$1\frac{13}{16}$	$1\frac{17}{32}$	$1\frac{5}{8}$	$1\frac{15}{32}$	$1\frac{1}{4}$	$\frac{9}{16}$	
DS09-37 P	37	$1\frac{1}{4}$	$1\frac{3}{8}$	$1\frac{5}{16}$	$2\frac{1}{16}$	$1\frac{19}{32}$	$1\frac{51}{64}$	$1\frac{17}{32}$	$1\frac{15}{32}$	$\frac{5}{8}$	
DS09-61 P	61	$1\frac{9}{16}$	$1\frac{11}{16}$	$1\frac{5}{8}$	$2\frac{51}{64}$	2	$2\frac{9}{64}$	2	$1\frac{11}{16}$	$\frac{3}{4}$	

1. DE-BURR ALL SHARP EDGES

TOLERANCES
FRACTIONS $\pm .015$ DECIMALS $\pm .005$ ANGLES $\pm 1/2^\circ$
UNLESS OTHERWISE SPECIFIED

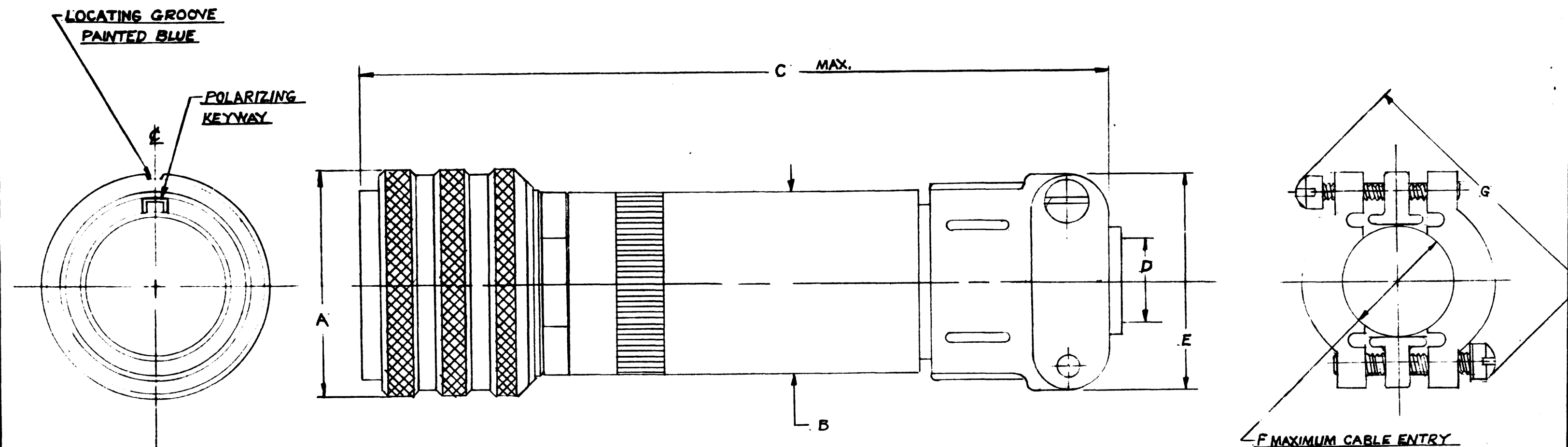
MATERIAL	SPEC.
MATERIAL	SPEC.
MATERIAL	SPEC.
FORGING	SPEC.

THE DEUTSCH COMPANY
7000 AVALON BLVD., LOS ANGELES, CALIF.

DS09*5 PLUG RACK PANEL TYPE
WITH CABLE CLAMP, EXTENSION &
ADAPTER

NO.	CHANGE	BY	DATE
DRAWN	<i>W. Bragman</i>		
CHECKED	<i>W. Bragman</i>		
APPROVED	<i>W. Bragman</i>		
DATE	1-25-59	SCALE	
MOD-220 PLUG (ENVELOPE)			

MOD. -220



SHELL SIZE	A	B	C MAX	D	E	F	G
-3 ^P _S	47 64	37 64	3 51 64	1 8	13 16	1 4	1 1 16
-7 ^P _S	59 64	11 16	5 51 64	32	7 8	5 16	1 1 8
-12 ^P _S	13 24	13 16	3 51 64	5 16	1 1 16	7 16	1 1 32
-19 ^P _S	13 24	61 64	3 59 64	7 16	1 3 32	9 16	1 1 2
-27 ^P _S	11 32	3 132	3 59 64	9 16	1 1 4	5 8	1 1 32
-37 ^P _S	31 64	1 1 4	3 59 64	5 8	1 15 32	3 4	1 7 8
-61 ^P _S	13 16	9 16	4 1 64	3 4	1 1 16	15 16	2 1 8

2. FOR AVAILABLE CONTACT ARRANGEMENTS AND
ALTERNATE INSERT POSITIONS SEE 17500 SHEETS.
1. SEE "GENERAL DESCRIPTION" FOR ELECTRICAL
& MATERIAL SPECIFICATIONS.

NOTES:

1. DE-BURR ALL SHARP EDGES

TOLERANCES
FRACTIONS $\pm .015$ DECIMALS $\pm .005$ ANGLES $\pm \frac{1}{2}^\circ$
UNLESS OTHERWISE SPECIFIED

MATERIAL	SPEC.
MATERIAL	SPEC.
MATERIAL	SPEC.
FORGING	SPEC.
	WT.

THE DEUTSCH COMPANY
7000 AVALON BLVD., LOS ANGELES, CALIF.

DS07-XS (ENVELOPE)
PLUG, QUICK DISCONNECT, DS TYPE
WITH CABLE CLAMP ADAPTER, EXTENSION
& CABLE CLAMP

NO. CHANGE BY DATE

DRAWN STAN. BYER
CHECKED [Signature]
APPROVED CED

DATE 11-16-59 SCALE

MOD. -220
PLUG (ENVELOPE)

Mouser Electronics

Authorized Distributor

Click to View Pricing, Inventory, Delivery & Lifecycle Information:

[TE Connectivity:](#)

[65053-220](#)