

P	LTR	DESCRIPTION	DATE	DWN	APVD
	A	INITIAL DRAWING	06SEP2019	RV	TN

Ordering Information

Sample Part Number ▶

720TDX

Type:

- 710TD = 120V, 220V, 266V line to neutral
- 720TD = 120V, L-L, 3 Phase
- 721TD = 230V, L-L, 3 Phase
- 722TD = 380V, L-L, 3 Phase
- 723TD = 460V, L-L, 3 Phase
- 724TD = 575V, L-L, 3 Phase
- 725TD = 416V, L-L, 3 Phase
- 730TD = 120 V, 230 V, 380 V, 460 V, L-L, 3 Phase or 120 V, Single Phase, L-N

Mounting:

X = Flange

Options:

7 = Reverse Inductive, 60 Hz

Function: 32

- ANSI/IEEE C37.90-1978
- UL file No. E58048
- CSA file No. LR61158



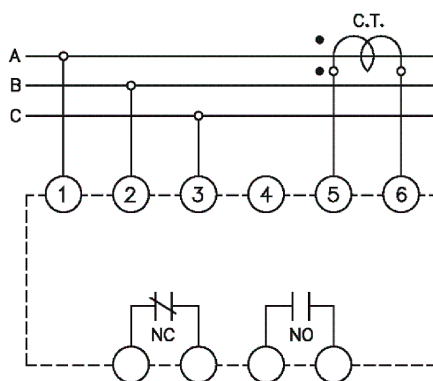
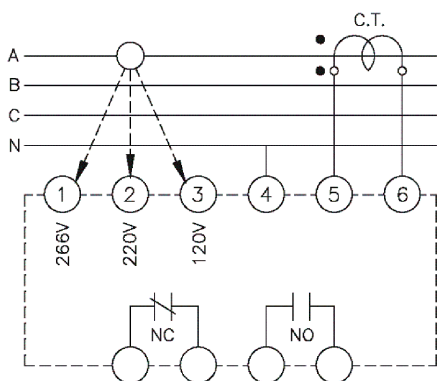
Several types of Reverse Power Relays are available including relays sensitive to reverse reactive power (KVAR). WILMAR is the leading brand of reverse power relays. Our rugged sealed construction provides continuous and reliable operation unaffected by shock, vibration or other severe environments. Reverse Power Relays are used for the protection of generator sets operating in parallel.

Notes:

1. Remove screw for access to the pick-up and time delay adjustments.
2. Clockwise rotation of the pick-up adjustment will raise the reverse trip point.
3. Clockwise rotation of the time adjustment will increase the time delay.
4. Polarity of the voltage and the current connections must be observed for true power sensing.
5. Interchanging connections on terminals 5 and 6, will cause the output contacts to pick-up on forward power and dropout on no power or reverse power.

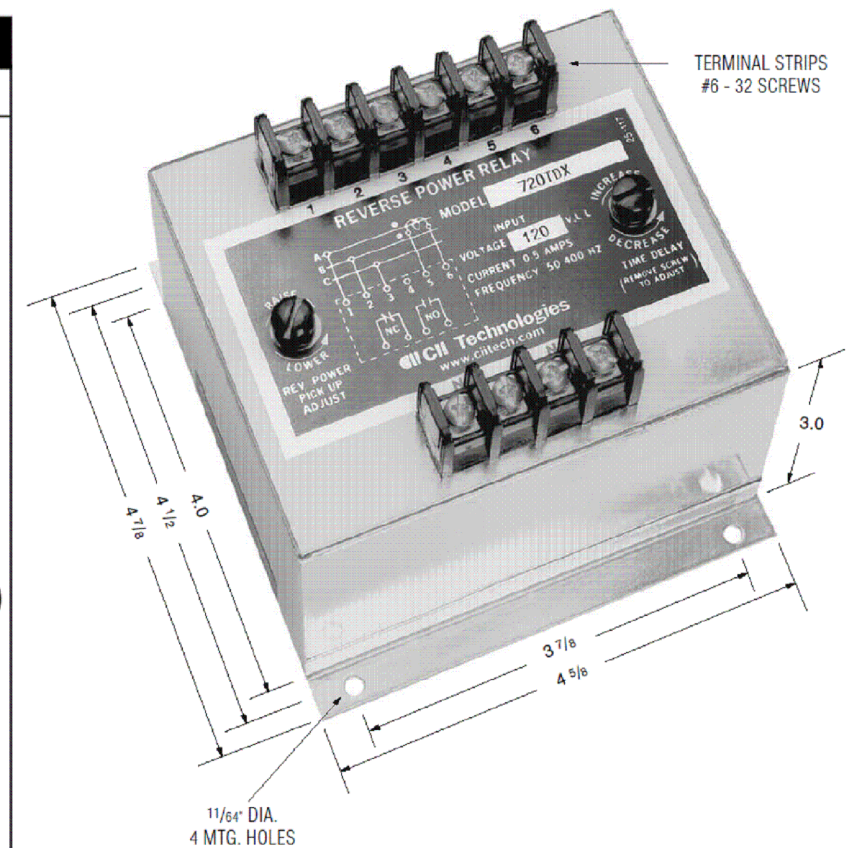
Model 710TD

Model 720TD (X) thru 724TD (X)



PRODUCT SPECIFICATIONS

Part Number	700TD Series
Line Voltage .....	Model 710TD = 120 V, 220 V or 266 V, line to neutral Model 730TD = 120 V, 230 V, 380 V, 460 V, L-L, 3 Phase or 120 V, Single Phase, L-N All models for three phase, three wire sensing are available, see part number selection
Operating Temperature Range	-40C to +70C
Line Frequency .....	50-500 Hz.
Current Requirements .....	0 to 5 amp max direct or from CT with 5 amp secondary
Trip Adjustment .....	Screwdriver adjustable 4% to 20% (of the 5 amp rating)
Time Delay Adjustment .....	0.5 to 20 seconds, screwdriver adjustable
Output Contacts .....	One set N.O., one set N.C.
Contact Ratings .....	5 amp resistive at 120 AC or 28 Vdc
Power Consumption .....	Voltage circuit: 2 VA max. Current circuit: 4 VA max.



ALL DIMENSIONS ARE IN INCHES

THIS DRAWING IS A CONTROLLED DOCUMENT.		DWN RV 06SEP2019	TE Connectivity		
		CHK RV 06SEP2019			
		APVD TN 06SEP2019	NAME 700 SERIES RELAY, REVERSE POWER		
DIMENSIONS: INCHES		PRODUCT SPEC			
TOLERANCES UNLESS OTHERWISE SPECIFIED:		APPLICATION SPEC			
MATERIAL		WEIGHT	SIZE A3	CAGE CODE	RESTRICTED TO
				DRAWING NO C-700-SERIES	
		CUSTOMER DRAWING	SCALE NTS	SHEET 1 OF 1	REV A

# Mouser Electronics

Authorized Distributor

Click to View Pricing, Inventory, Delivery & Lifecycle Information:

[TE Connectivity:](#)

[1618092-2](#)