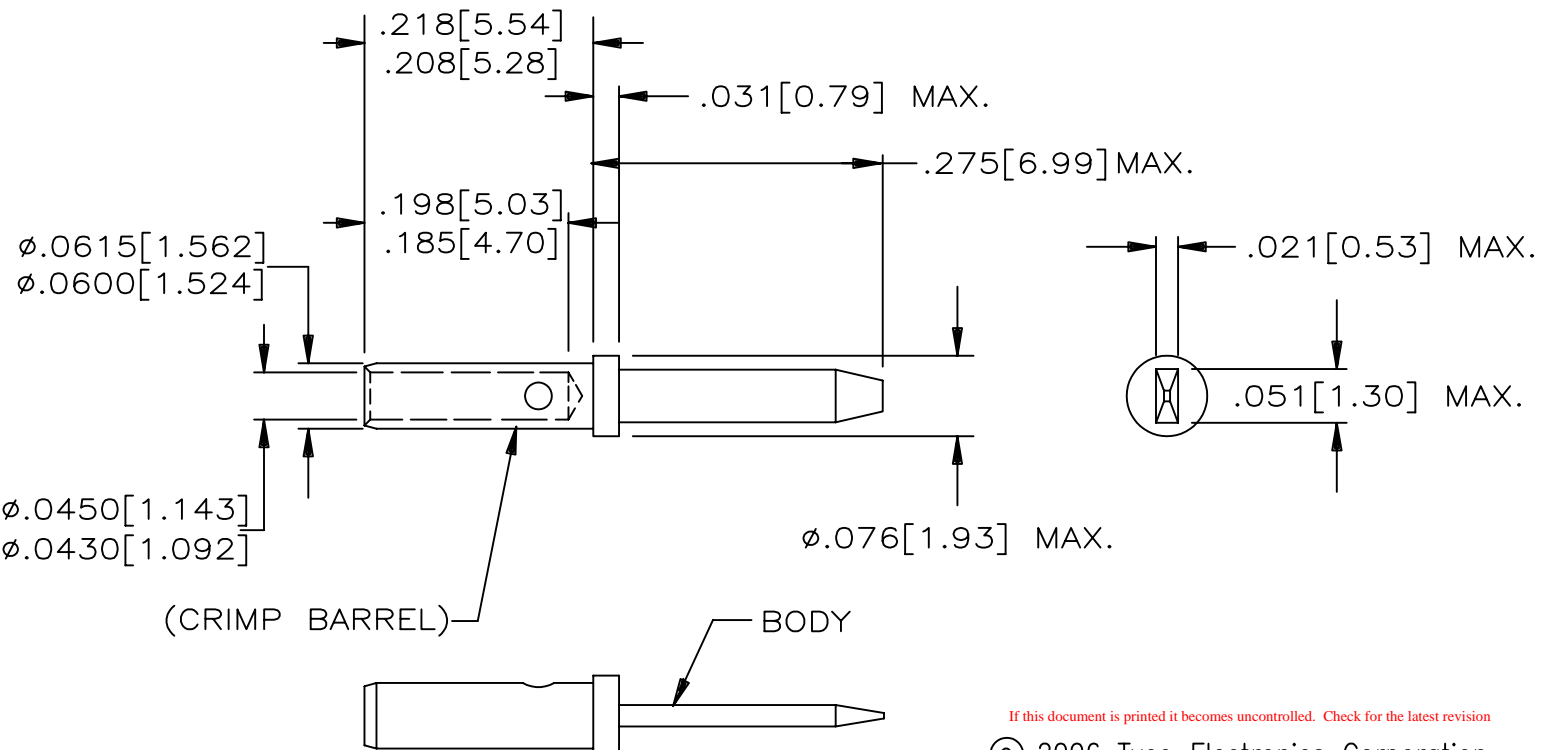


NOTE:

1. THIS CONTACT IS DESIGNED TO MEET THE APPLICABLE REQUIREMENTS OF RAYCHEM SPECIFICATION C-6114 AND C-6115.
2. MATERIAL:
BODY: COPPER ALLOY CDA C19160 (BOILLAT C97), TESTED PER ASTM B 249.
3. FINISH:
BODY: GOLD PLATE PER ASTM B 488, CLASS 1
4. CRIMP TOOL RECOMMENDATION:
A: TOOL NUMBER M22520/2-01
B: POSITIONER NUMBER CTA-0148 (DANIELS #K817)
5. THIS CONTACT MATES WITH TYCO SOCKET CONTACT NUMBER CTA-0094
6. CRIMP BARREL DESIGNED TO ACCOMMODATE A WIRE RANGE OF AWG 20-24
7. CONFIGURATION CONTROL ES 71001 APPLIES.
8. THESE CONTACTS ARE USED IN TYCO INSERTS MTC100-YC1-001, MTC100-YC1-002 AND MTC100-YC1-005. SEE DRAWING D-659-0097 FOR INSERT CONFIGURATION.
9. RECOMMENDED WIRE STRIP LENGTH: 0.195-0.215 [4.95-5.46].



SPECIFICATION CONTROL DRAWING

If this document is printed it becomes uncontrolled. Check for the latest revision
© 2006 Tyco Electronics Corporation.
All rights reserved

ITEM	QTY.	PART NO	DWG OR SPEC NO	DESCRIPTION
PARTS LIST				
UNLESS OTHERWISE SPECIFIED DIMENSIONS ARE INCHES. METRIC DIMENSIONS ARE IN BRACKETS. DECIMAL TOLERANCES .XXX ± [mm] .XX ± [mm] .X ± [mm] ANGLE TOLERANCE .X ± WEIGHT 0.092 Gram Max. CAD FILE C060662.DWG		DRAWN ZS.ORBAN	DATE Aug/4/06	<div><div>tyco</div><div>Electronics</div></div> <div>TYCO ELECTRONICS 300 Constitution Drive Menlo Park, CA. 94025 USA</div> <div>Raychem</div> <div>TITLE CONTACT. PIN. CRIMP. SIZE 22-20 MTC100 SERIES</div> <div>SIZE A</div> <div>CAGE CODE: 06090</div> <div>DWG. NO. CTA-0093</div> <div>D</div>
		APPROVED M.HIGGY	DATE Aug/4/06	
		MATERIAL		
		FINISH		
		THIRD ANGLE PROJECTION		DO NOT SCALE THIS DRAWING
		SHEET 1 OF 1		

Mouser Electronics

Authorized Distributor

Click to View Pricing, Inventory, Delivery & Lifecycle Information:

[TE Connectivity:](#)

[006151-000](#)