

## NOTES:

## 1. MATERIAL:

- A. **BODY**; PHOSPHOR BRONZE PER QQ-B-750.  
 B. **SCREW**; STAINLESS STEEL PER QQ-S-763, 300 SERIES.  
 C. **CLAMP INSERT**; FLUOROSILICONE ELASTOMER PER MIL-R-25988.

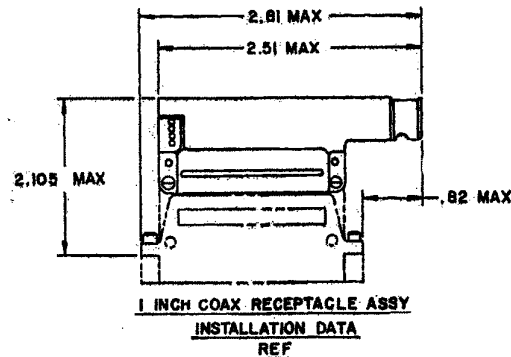
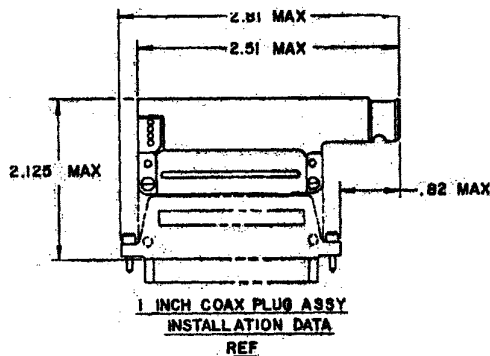
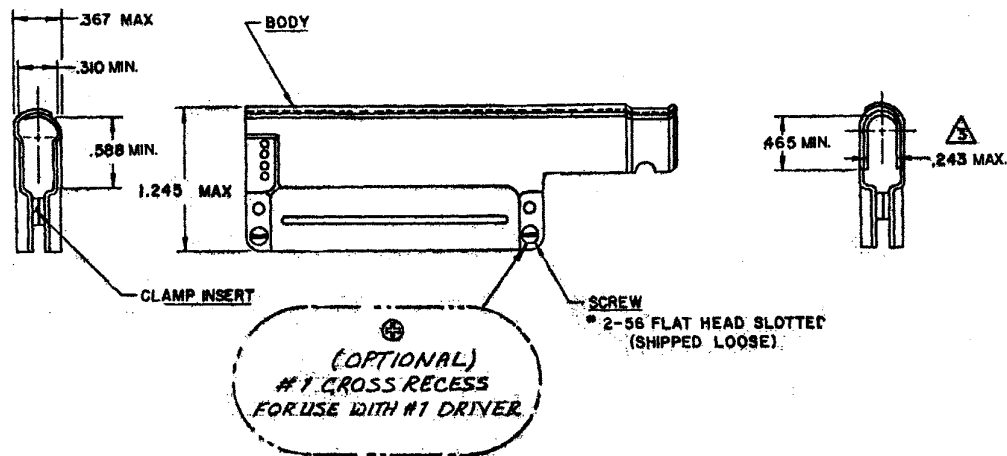
## 2. FINISH:

- A. **BODY**; TIN PLATED PER MIL-T-10727 OVER NICKEL PER MIL-C-26074.  
 B. **SCREW**; CADMIUM PLATED PER QQ-P-416 OVER NICKEL UNDERPLATE

3. WHEN SCREWS ARE TIGHTENED TO ACHIEVE 0.1 INCH SPACING BETWEEN SHELL HALVES (EAR THICKNESS) THIS DIMENSION SHALL BE 0.225 MIN.

4. **Raychem** PART NUMBER CHA-0016-003 IS MARKED ON BACKSHELL PACKAGE.

5. THIS BACKSHELL IS FOR USE WITH **Raychem** MTC COAX CONNECTORS, 1" COAX PLUG OR 1" COAX RECEPTACLE AS SHOWN. FURTHERMORE IT IS FOR USE ON CADMIUM PLATED CONNECTORS WHERE 500 HOURS SALT SPRAY RESISTANCE IS REQUIRED.



## SPECIFICATION CONTROL DRAWING

UNLESS OTHERWISE SPECIFIED DIMENSIONS ARE IN INCHES BRACKETED DIMENSIONS ( ) ARE METRIC AND TOLERANCES ARE:		DRAWN LUTTICKEN		TYCO/ELECTRONICS/RAYCHEM WIRE AND HARNESSING PRODUCTS 307 CONSTITUTION DRIVE MENLO PARK, CALIFORNIA 94025	
XXX: 2 — ( — )		CHECKED ST		TITLE RIGHT ANGLE BREAKOUT BACKSHELL ASSY	
XX: 2 — ( — )		APPROVED [Signature] 2-19-86		(FOR CADMIUM PLATED CONNECTORS)	
A: 2 —		APPROVED [Signature] 2-20-86		1 INCH MTC COAX	
		CAD FILE: T28878.TE		SIZE C	CODE IDENT NO. 68090
		RPL: 624323-000		DWG. NO. CHA-0016-003	
				WEIGHT — SHEET 1 OF 1	

If this document is printed it becomes uncontrolled.  
 Check with the web for latest revision.

DO NOT SCALE THIS DRAWING

# Mouser Electronics

Authorized Distributor

Click to View Pricing, Inventory, Delivery & Lifecycle Information:

[TE Connectivity:](#)

[624323-000](#)