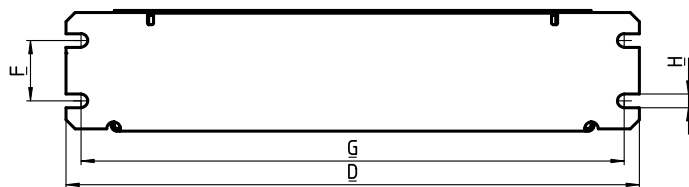
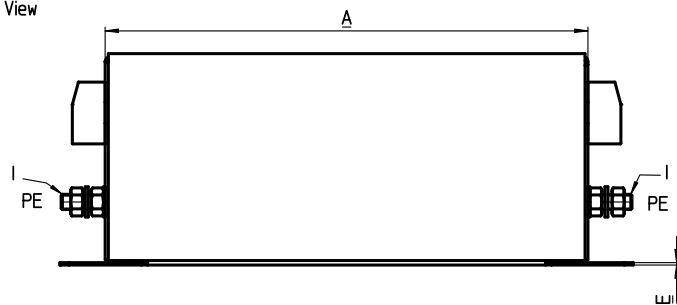


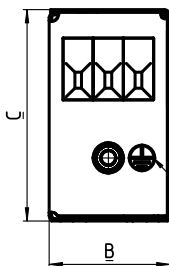
Bottom View



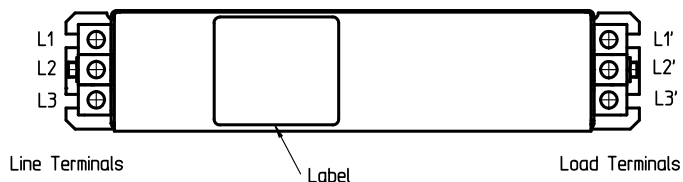
Side View



Front View

Coined Earthing Symbol  
on both sides

Top View



## Specifications

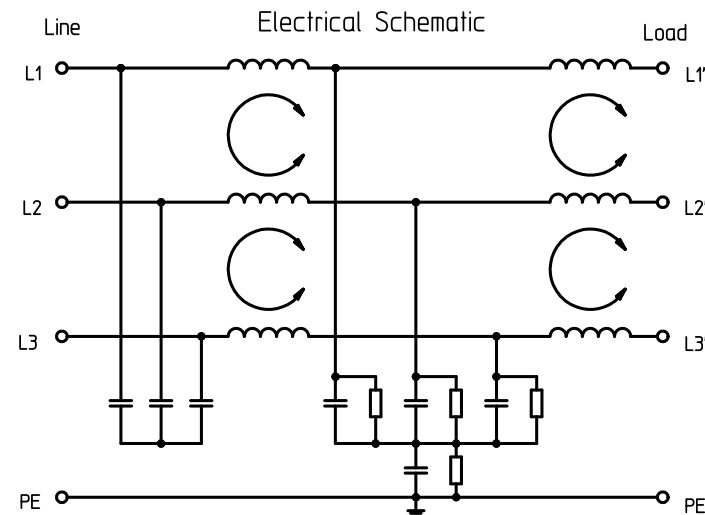
	7BCF10	16BCF10	30BCF10	42BCF10	55BCF10	75BCF10	100BCF10	130BCF10	180BCF10	
Voltage	3phase 480/277 VAC									
Frequency	50Hz / 60Hz									
Rated current @50°C	7A	16A	30A	42A	55A	75A	100A	130A	180A	
max leakage current	33mA @400VAC/50Hz									
Operating temperatur	-10°C to +55°C (derating on request)									
Storage temperature	-25°C to +100°C									
Wire range solid	0,2-6mm <sup>2</sup>		0,5-16mm <sup>2</sup>		0,5-25mm <sup>2</sup>		6-35mm <sup>2</sup>		25-95mm <sup>2</sup>	
Wire range flex	0,2-4mm <sup>2</sup>		0,5-10mm <sup>2</sup>		0,5-16mm <sup>2</sup>		10-25mm <sup>2</sup>		35-95mm <sup>2</sup>	
max torque terminals	0,8Nm		1,8Nm		2,3Nm		4,5Nm		8Nm	20Nm
max torque PE	3Nm			8Nm			20Nm			
Housing	CRS zinc plated									
Protection Category	IP20									
Approvals	UL and VDE									

All materials and finishes comply with RoHS directive.

## Dimensions

	7BCF10	16BCF10	30BCF10	42BCF10	55BCF10	75BCF10	100BCF10	130BCF10	180BCF10	To
A	160	220	240	280	220	240			350	±1
B	40	45	50		85	80	90 ±0,8		120 ±0,8	±0,6
C	70 ±0,6		85		90	135 ±1	150 ±1		170 ±1	±0,8
D	190	250	270	310	250	270			380	±1
E	0,8				1					±0,1
F	20	25	30		60		65		102	±0,3
G	180	235	255	295	235	255			365	±0,5
H	4,5	5,4				6,5				±0,2
I	M5			M6			M10			---

all dimensions in mm



## High voltage test

phase-phase 2100VDC for 2sec.  
phase-earth 2650VDC for 2sec.

Type	Corcom PN	TYCO PN
7BCF10	F8232	0-160989-1
16BCF10	F8233	0-160989-2
30BCF10	F8234	0-160989-3
42BCF10	F8235	0-160989-4
55BCF10	F8236	0-160989-5
75BCF10	F8237	0-160989-6
100BCF10	F8238	0-160989-7
130BCF10	F8239	0-160989-8
180BCF10	F8240	0-160989-9

PART NO:	PART NAME:	MATERIAL/SURFACE:	OPTIONAL DESCRIPTION
PART LIST			
TOLERANCES UNLESS OTHERWISE SPECIFIED ACCORDING TO ISO 8015 AND ISO 2768-1		DIMENSIONS: mm	
test dimen. / Prüfmaß: ( ) ; auxil. dimen. / Hilfsmaß: ( ) ; theor. dimen. / theor. Maß: ( ) ; production control dimen. / Fertigungskontrollmaß: ( ) ; dimen. for measure. technology / messtechn. rel. Maß: ( ) ;			
3,1	9-7-08	WEIH	New Tyco Logo
ECR-NO:	DATE	NAME	INFO
DWG NO:	NAME:	DATE	NAME
11	BCF Series	09.07.2008	Weiden
Customer Drawing		APPROVED	Mader
REPLACEMENT FOR:		DWG LOC NO: F	SHEET: 1 OF 1
OPTIONAL NO:		CRF8232-CRF8240	
SIZE: A2		REVISION	
THIS DRAWING IS A CONTROLLED DOCUMENT. HANDWRITTEN CHANGES ARE NOT ALLOWED		92	

# Mouser Electronics

Authorized Distributor

Click to View Pricing, Inventory, Delivery & Lifecycle Information:

[TE Connectivity:](#)

[1609989-3](#)