

			LOC	DIST	REVISIONS					
			—	—	P	LTR	DESCRIPTION	DATE	DWN	APVD
						A	REVISED PER ECR-14-007795	29MAY2014	RS	EC
						B	ECO-15-015144: ADD UL.	25NOV2015	EC	EC
						B2	ECO-16-007046	09MAY2016	RS	HS

SAFETY ORGANIZATIONS

THIS FILTER HAS BEEN FORMALLY RECOGNIZED, CERTIFIED OR APPROVED BY THE LISTED AGENCY. THEREFORE, ALL TEST/REQUIREMENTS SPECIFIED IN THE LATEST REVISION OF THE FOLLOWING AGENCY STANDARDS HAVE BEEN MET:

UL

OPERATING SPECIFICATIONS

LINE CURRENT/VOLTAGE: 1600 A, 690 VAC
 LINE FREQUENCY: 50-60 Hz
 NOMINAL LEAKAGE CURRENT: 10mA
 MAXIMUM LEAKAGE CURRENT: 330mA @ 400V, 50HZ
 OPERATING AMBIENT TEMPERATURE RANGE
 @ RATED CURRENT, I : -10C TO +40C

IN AN AMBIENT, T, HIGHER THAN 40°C,
 THE MAXIMUM OPERATING
 CURRENT, I, IS AS FOLLOWS:

$$I_o = I_R \sqrt{\frac{100 - T_o}{60}}$$

RELIABILITY SPECIFICATIONS

STORAGE TEMPERATURE: -40°C TO +85°C
 HUMIDITY: 21 DAYS @ 40°C AND 95% RH

TEST SPECIFICATIONS

INDUCTANCE, NOMINAL: 28.7 µH

CAPACITANCE @ 1 kHz, 0.25 VAC MAX., 25°C ±1°C:
 LINE TO GROUND, NOMINAL: 2.62 µF
 LINE TO LINE, NOMINAL: 11.9 µF

DISCHARGE RESISTOR

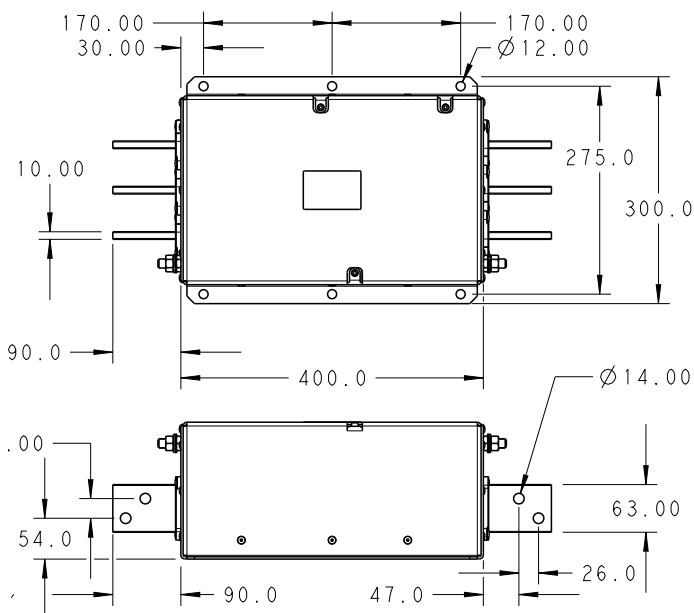
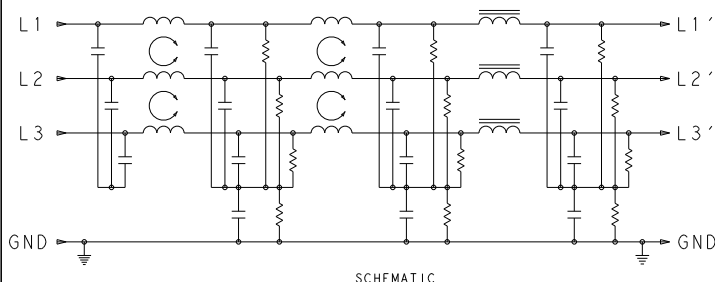
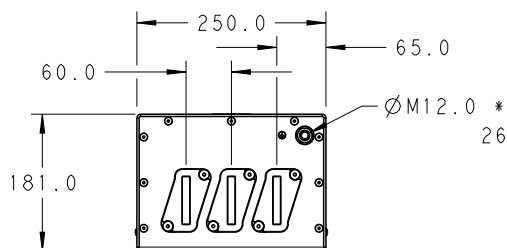
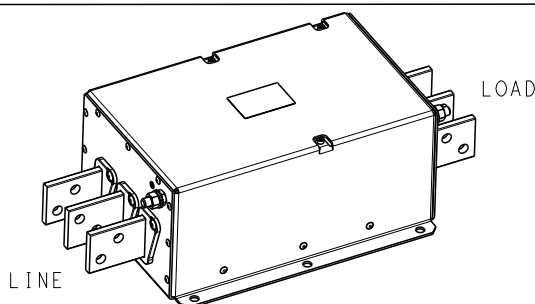
L/G AND L/L I.R.: 666kΩ / 666kΩ
 IR (NO DISCHARGE RESISTOR) 20°C, 50% RH AND 100VDC, MIN: 6000MΩ

RECOMMENDED RECEIVING INSPECTION HIPOT

LINE TO GROUND FOR 1 MINUTE: 2640 VDC
 LINE TO LINE FOR 1 MINUTE: 2520 VDC

FILTER APPROVAL:

THE BEST WAY TO SELECT AND QUALIFY
 A FILTER IS FOR YOUR ENGINEERING TO
 TEST THE UNIT IN YOUR EQUIPMENT.



* DO NOT LOOSEN INNER GROUND NUTS.
 TORQUE OUTER GROUND NUTS TO:
 25-30 NM [220-260 IN-LB]

TYPICAL INSERTION LOSS
 COMMON MODE 50/50 Ω; DIFFERENTIAL MODE 100/100 Ω

MHz	0.01	0.05	0.15	0.5	1.0	3.0	5.0	10	30
CM	11	12	56	87	72	60	48	33	22
DM	32	45	70	62	52	42	37	32	24

20


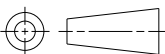
RELEASED FOR PUBLICATION

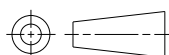
ALL RIGHTS RESERVED.

BY -

COPYRIGHT 20

THIS DRAWING IS UNPUBLISHED.

DIMENSIONS:		DWN RS	16DEC2013	MATERIAL		FINISH			
mm		CHK EC	16DEC2013	<div>TE Connectivity</div>					
TOLERANCES UNLESS OTHERWISE SPECIFIED:		APVD EC	16DEC2013						
		PRODUCT SPEC						NAME	
0 PLC ±2.0		-		1600APH12P					
1 PLC ±1.0				3-PHASE DELTA FILTER					
2 PLC ±0.50		APPLICATION SPEC		SIZE		CAGE CODE	DRAWING NO	RESTRICTED TO	
3 PLC ±0.200		-		A 4		00779	C-9-1609148-1		
4 PLC ±0.1000				WEIGHT		-		-	
ANGLES ±-									
									
CUSTOMER DRAWING				SCALE		2:15		SHEET 1 OF 1	REV B2



Mouser Electronics

Authorized Distributor

Click to View Pricing, Inventory, Delivery & Lifecycle Information:

[TE Connectivity:](#)

[9-1609148-1](#)