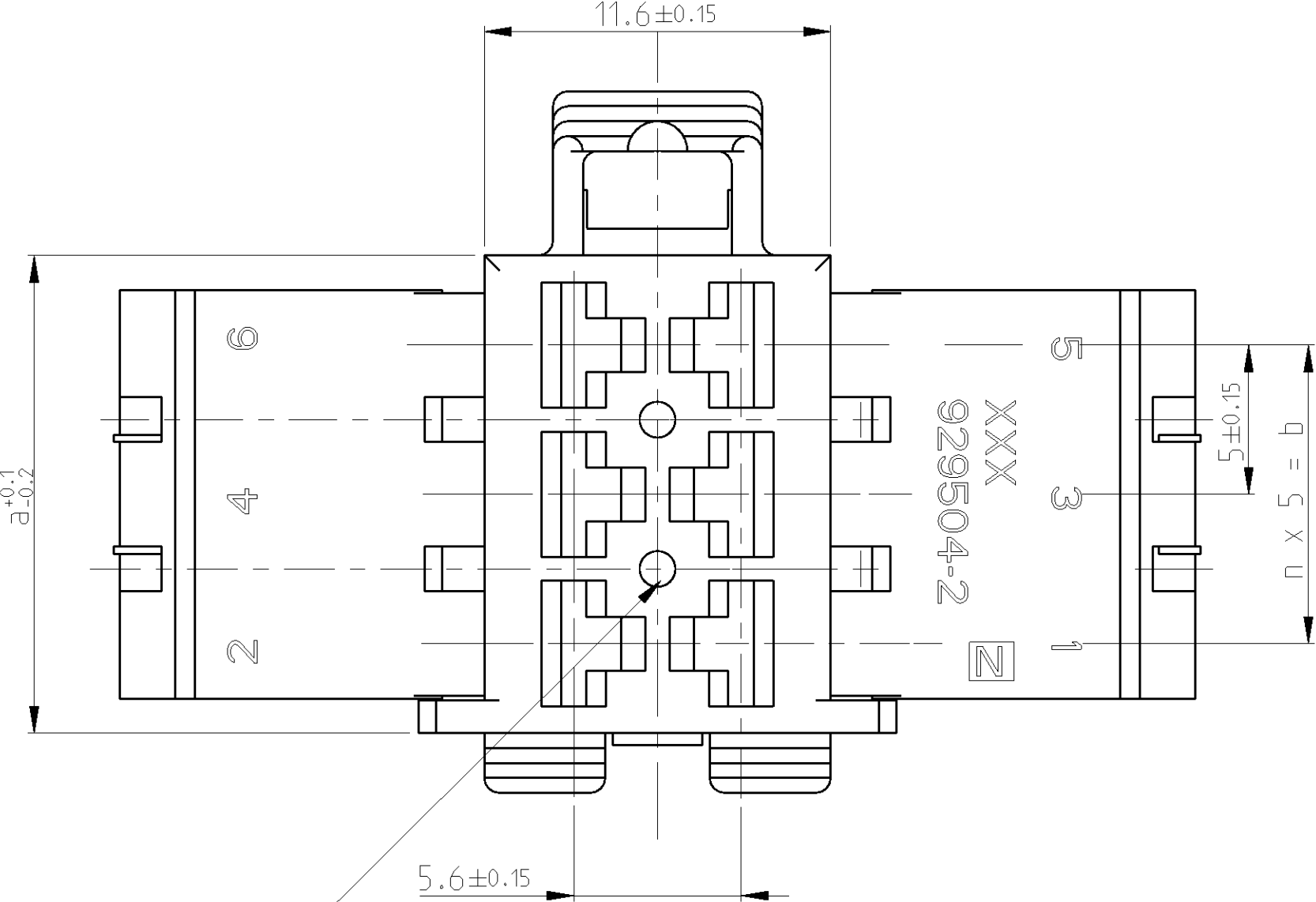
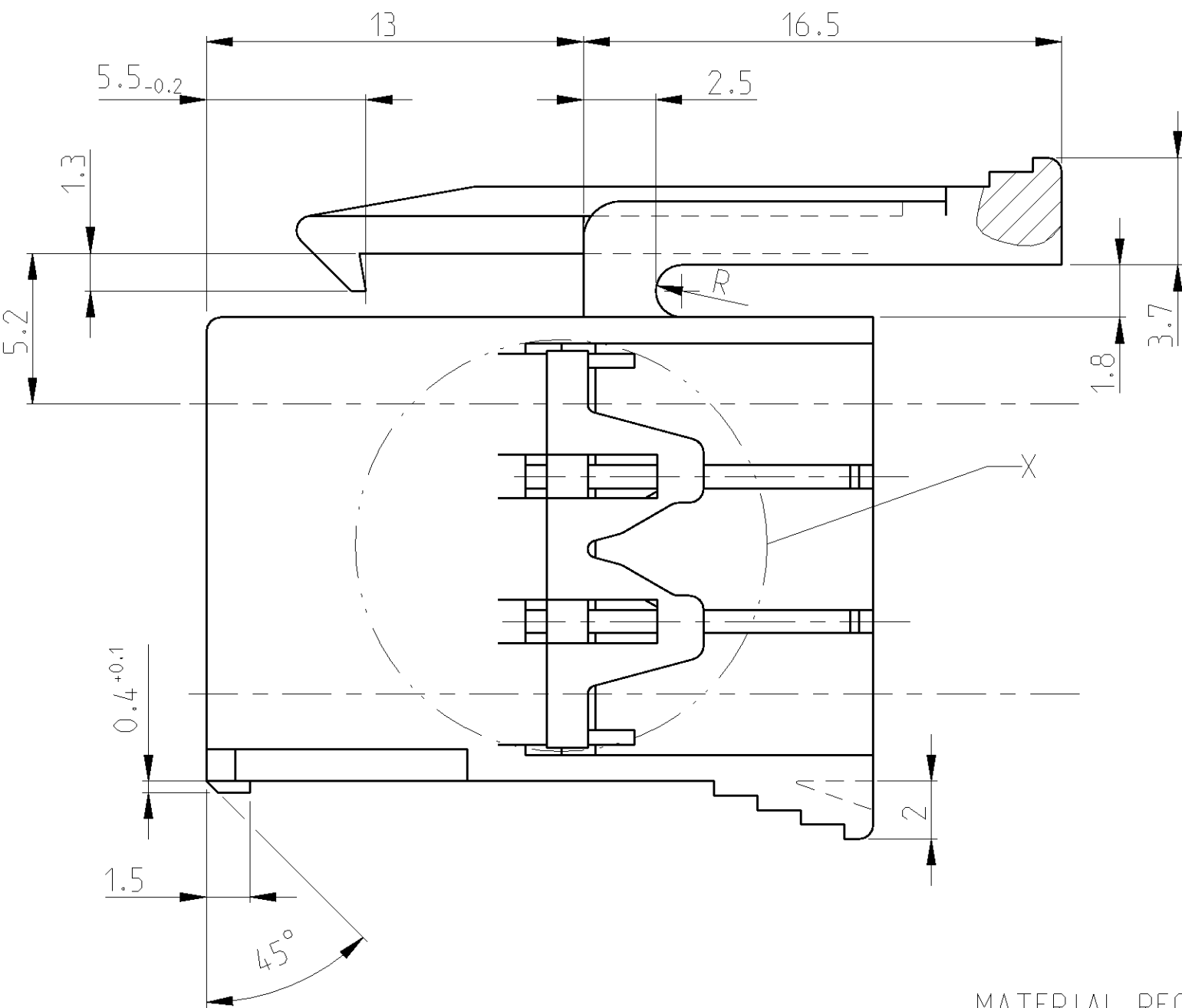
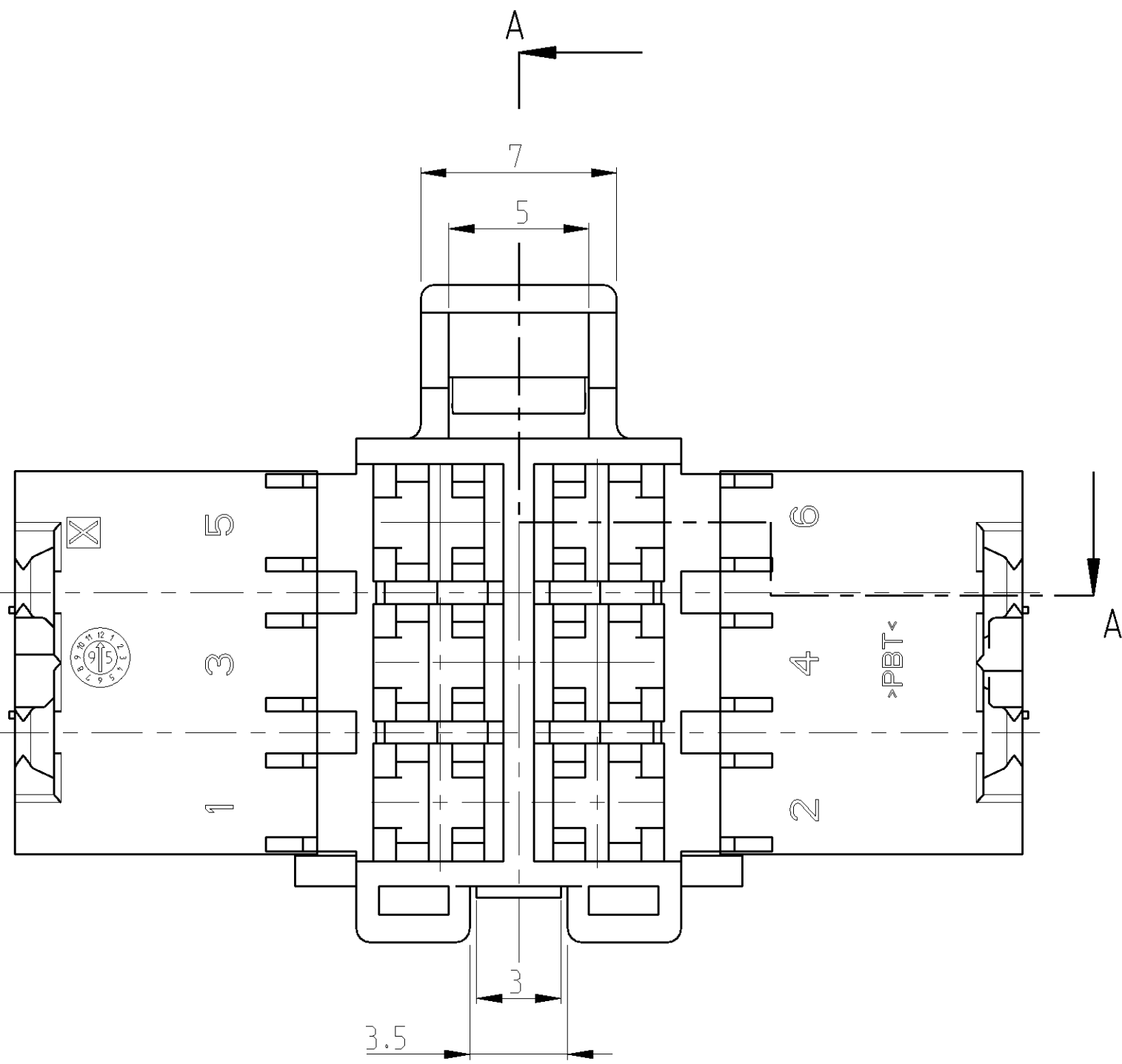
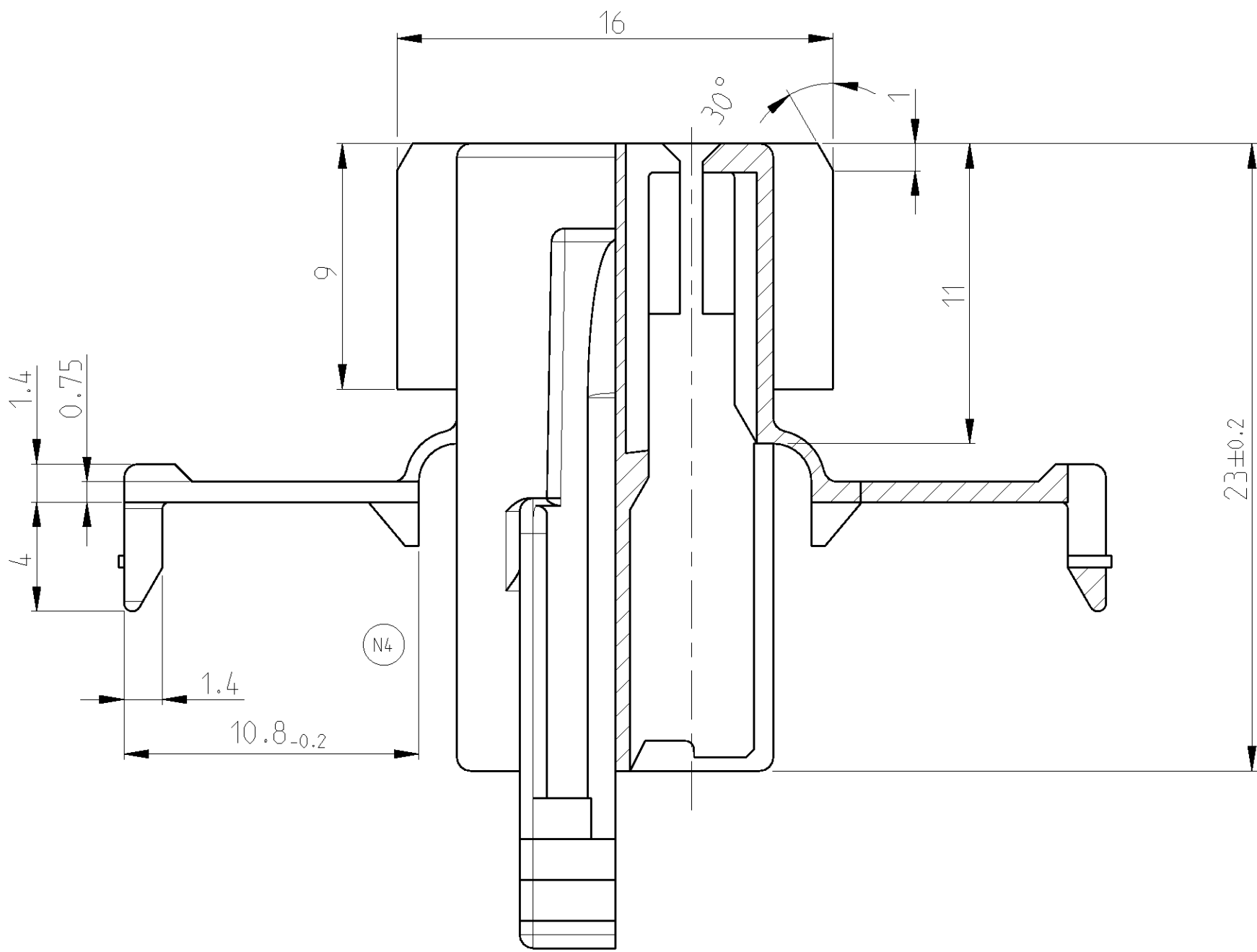


LOC	DIST	F	CYR	REVISIONS		
				ÄNDERUNGEN	DATE	APVD
A1	-	-	-	DESCRIPTION	DATE	APVD
				BESCHREIBUNG		
				REVISED PER ECO-11-005027	21MAY2011	RK HMR
				NEW PN 4-929504-2 ADDED	17JUL2012	Homolka S.Krauss
				PN 4-929504-2 REMOVE	24AUG2012	Homolka S.Krauss
				DIMENSION 1.4mm DELETED	17DEC2012	Homolka S.Krauss

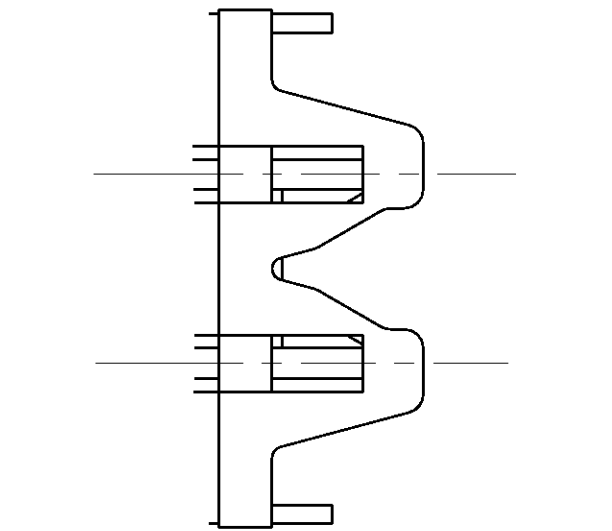


MATERIAL RECESS OPTIONAL
Materialentnahme optional

SECTION
Schnitt A-A



DETAIL X
Einzelheit



CONTOUR FOR 6POS. JPT-HSG.
Kontur fuer 6pol. JPT-Hsg.

CONTOUR FOR 4 AND 8-22POS.
JPT-HSG.
Kontur fuer 4 u. 8-22pol.
JPT-Hsg.

	50	56	10	BLACK schwarz	929504-7	N	22POS. JPT-HSG. 22pol. JPT-Geh.
				NATURAL natur	1-929504-7	N	9.3g
	40	46	8	BLACK schwarz	929504-6	N	18POS. JPT-HSG. 18pol. JPT-Geh.
				NATURAL natur	1-929504-6	N	7.7g
	30	36	6	BLACK schwarz	929504-5	N	14POS. JPT-HSG. 14pol. JPT-Geh.
				NATURAL natur	1-929504-5	N	6.2g
	20	26	4	BLACK schwarz	929504-4	N	10POS. JPT-HSG. 10pol. JPT-Geh.
				NATURAL natur	1-929504-4	N	4.6g
	15	21	3	BLACK schwarz	929504-3	N	8POS. JPT-HSG. 8pol. JPT-Geh.
				NATURAL natur	1-929504-3	N	3.9g
	10	16	2	BLACK schwarz	929504-2	N	6POS. JPT-HSG. 6pol. JPT-Geh.
				NATURAL natur	1-929504-2	N	3.1g
	5	11	1	BLACK schwarz	929504-1	N	4POS. JPT-HSG.. 4pol. JPT-Geh.
				NATURAL natur	1-929504-1	N	2.4g
				GREEN gruen	2-929504-1	N	
CONTACT CAVITY NUMBERS Kammernummerierung	b	a	n	COLOUR Farbe	TE CONNECTIVITY ORDER-NO. TE CONNECTIVITY Bestell-Nr.	REV	DESCRIPTION/WEIGHT Benennung/Gewicht

NOTES:
Bemerkungen:

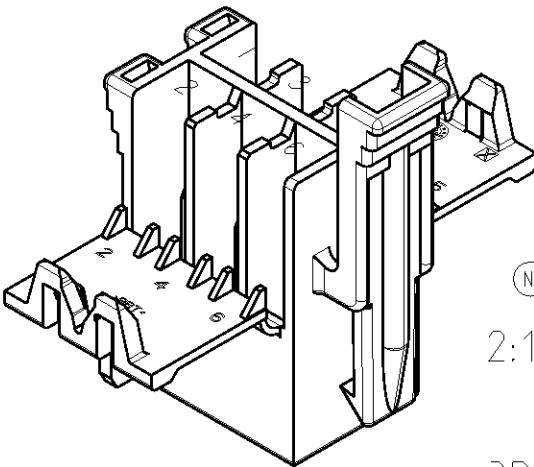
- SUITABLE JUNIOR POWER TIMER CONTACTS SEE DRAWING: PN 1355046
Passende Junior Power Timer Kontakte siehe Zeichnung: PN 1355046

TE CONNECTIVITY-Nr.:1355046
MAX. ALLOWED WIRE SIZE 2.5MM²FLR
max. zulaessiger Leitungsquerschnitt 2.5mm² FLR
- SUITABLE COUNTERPARTS:
Passende Gegenstuecke:

2.8mm FF TAB-HOUSING
2.8mm FF Flachstecker-Gehaeuse
TE CONNECTIVITY-Nr. 929505

2.8mm TAB-HEADER 90DEG
2.8mm Messerleiste 90°
TE CONNECTIVITY-Nr. 828801

2.8mm TAB-HEADER 180DEG
2.8mm Messerleiste 180°
TE CONNECTIVITY-Nr. 963357



3D-MODEL (6 POS.)

THIS DRAWING IS A CONTROLLED DOCUMENT. DIESSESCHNITTZEICHNUNG IST EINE KONTROLLIERTE DOKUMENTATION. © COPYRIGHT 1995		DWN A. RICHTER	28AUG95	TE Connectivity	
DIMENSIONS MASSENHEITEN: mm		CHK J.HOSS	26NOV07	NAME	
TOLERANCES UNLESS OTHERWISE SPECIFIED: ALLE TOLERANZEN		APVD	-	PRODUCT SPEC PRODUKTSPEZ.	
MATERIAL PBT		SIZE A1	CAGE CODE 00779	DRAWING NO. 929504	
FINISHES AND PLATING SEE TABLE		APPLICATION SPEC VERARBEITUNGSSPEZ.	-	RESTRICTED TO NUR FÜR	
CUSTOMER DRAWING		SCALE 1:1	SHEET 1	OF 1	REV N4

Mouser Electronics

Authorized Distributor

Click to View Pricing, Inventory, Delivery & Lifecycle Information:

[TE Connectivity:](#)

[929504-1](#)