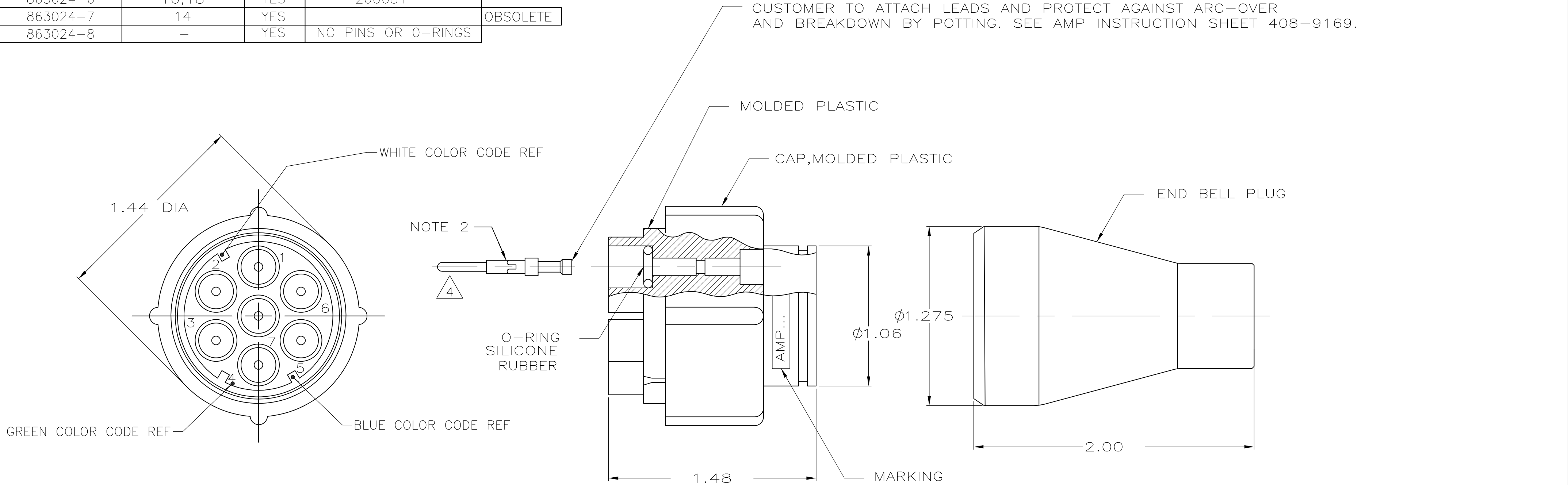


THIS DRAWING IS UNPUBLISHED.		RELEASED FOR PUBLICATION	
© COPYRIGHT - By -		ALL RIGHTS RESERVED.	
PART NO.	WIRE SIZE RANGE	COLOR CODE	REMARKS 4
863024-1	20,22,24	NO	200679-1
863024-2	16,18	NO	200681-1
863024-3	14	NO	201645-1
863024-5	20,22,24	YES	-
863024-6	16,18	YES	200681-1
863024-7	14	YES	-
863024-8	-	YES	NO PINS OR O-RINGS

LOC	DIST	REVISIONS			
-	-	P	LTR	DESCRIPTION	DATE
		F		REV PER ECO-15-013197	13OCT15



1. PLUG ASSEMBLY WILL WITHSTAND WITHOUT BREAKDOWN 27KVDC PIN TO PIN AND 27KVDC PIN TO GROUND. WHEN MATED WITH RECEPTACLE 861647-1.
2. TO REMOVE PINS USE EXTRACTION TOOL #861751-1.
3. CAVITY TO ACCEPT AMP PINS TYPE II SIZE 16.
- 4 CRIMP CONTACTS PER TE 408-7516 AS SPECIFIED FOR EACH CONTACT PART NUMBER.

Mouser Electronics

Authorized Distributor

Click to View Pricing, Inventory, Delivery & Lifecycle Information:

[TE Connectivity:](#)

[863024-2](#)