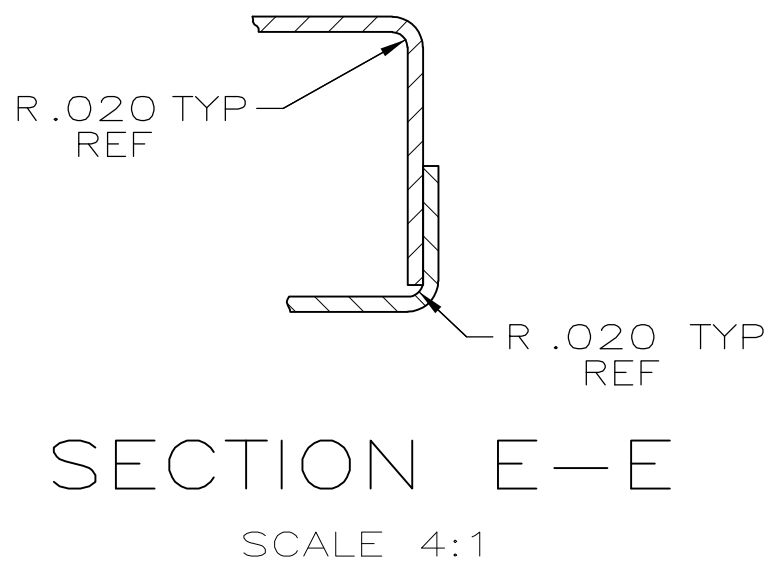
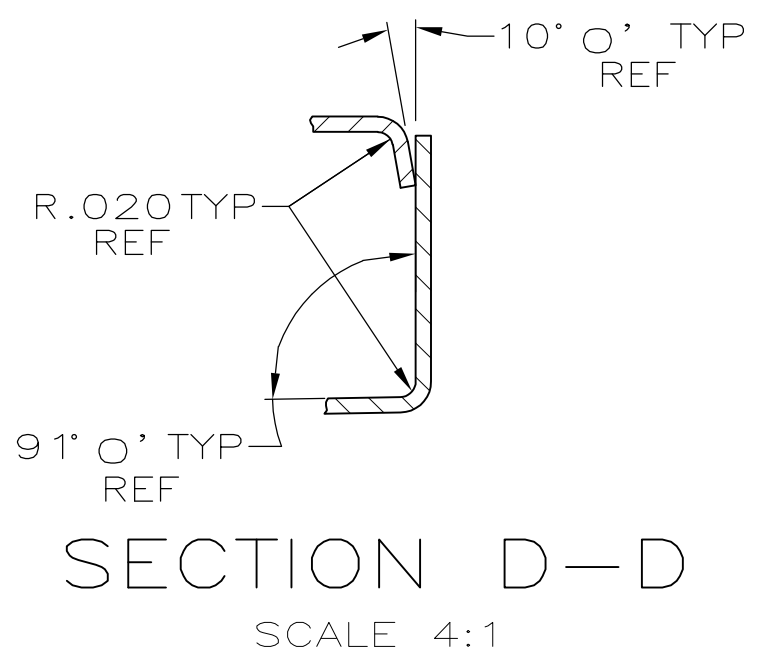
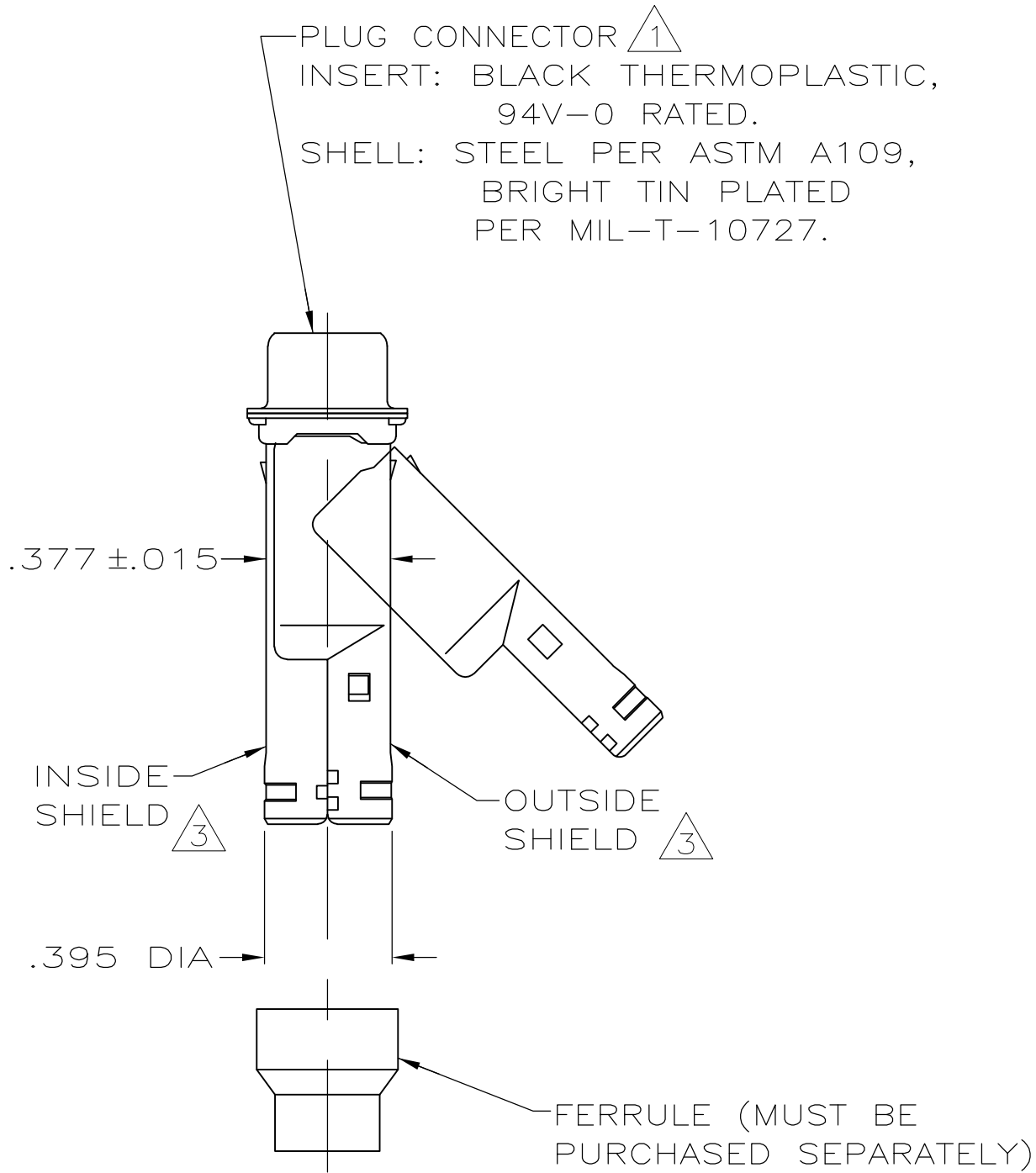
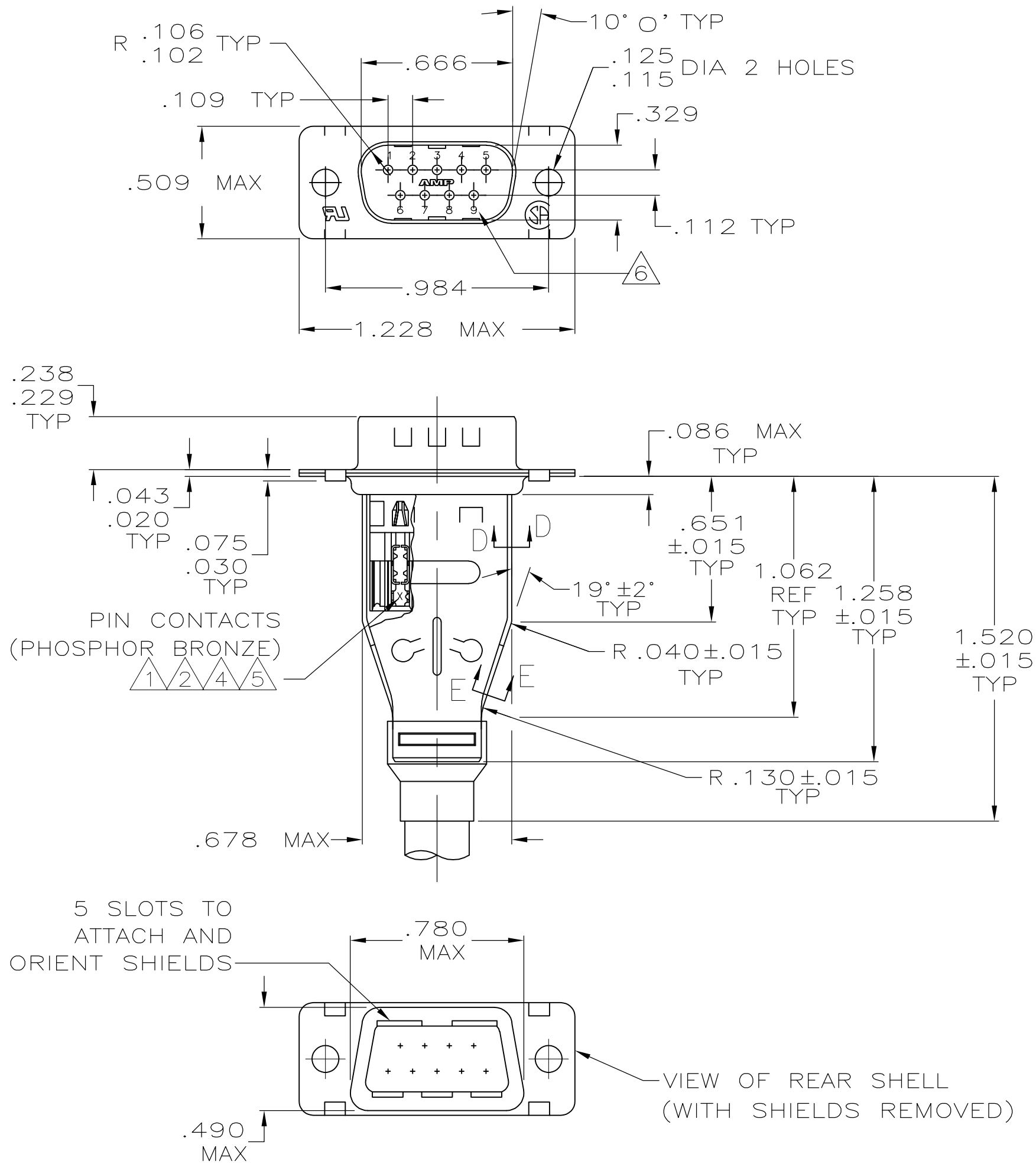


LOC	DIST	REVISIONS			
GP	00	P	LTR	DESCRIPTION	DATE
			M1	REVISED PER ECO-11-004835	11MAR11



- 1 PLUG CONNECTOR FULLY LOADED WITH CONTACTS. ALL OTHER PARTS SHIPPED UNASSEMBLED (EACH PART INDIVIDUALLY BULK PACKED).
- 2 NUMBER ON CONTACT INDICATES WIRE RANGE.
- 3 SHIELDS: MATERIAL—.020 THICK STEEL, TIN PLATED.
- 4 CONTACTS PLATED GOLD PLATED FOR LENGTH OF .150 MIN FROM MATING END, .000030 MIN GOLD IN MATED AREA. .000100—.000200 BRIGHT TIN OR BRIGHT IN TIN-LEAD IN WIRE TERMINATION AREA. .000050 NICKEL UNDERPLATE ON ENTIRE CONTACT.
- 5 CONTACTS PLATED GOLD PLATED FOR LENGTH OF .150 MIN FROM MATING END, GOLD FLASH IN MATED AREA. .000100—.000200 BRIGHT TIN OR BRIGHT IN TIN-LEAD IN WIRE TERMINATION AREA. .000030 NICKEL UNDERPLATE ON ENTIRE CONTACT.
- 6 RAISED CAVITY IDENTIFICATION AND AMP TRADEMARK.
- CONTACTS GOLD PLATED FOR A LENGTH OF .150 MIN FROM MATING END, .000030 MIN GOLD IN MATED AREA, .000100—.000200 MATTE TIN IN WIRE TERMINATION AREA, ALL OVER .000050 MIN NICKEL UNDERPLATE ON ENTIRE CONTACT.
- OR
- CONTACTS GOLD PLATED FOR A LENGTH OF .150 MIN FROM MATING END, GOLD FLASH OVER PALLADIUM-NICKEL, .000030 MIN TOTAL IN MATED AREA, .000100—.000200 MATTE TIN IN WIRE TERMINATION AREA, ALL OVER .000050 MIN NICKEL UNDERPLATE ON ENTIRE CONTACT.

OBSOLETE	7	3	#20-22	747515-8
	7	2	#22-26	747515-7
OBSOLETE	5	3	#20-22	747515-6
OBSOLETE	5	2	#22-26	747515-5
OBSOLETE		1	#26-30	747515-4
OBSOLETE	4	3	#20-22	747515-3
OBSOLETE	4	2	#22-26	747515-2
OBSOLETE		1	#26-30	747515-1
CONTACT FINISH		2	WIRE RANGE	PART NUMBER

THIS DRAWING IS A CONTROLLED DOCUMENT.		DWN L. VARELA - 11-16-04	TE Connectivity	
		CHK J. GERACE 11-16-04		
DIMENSIONS: INCHES		APVD M. WALMSLEY 11-16-04	NAME	
		PRODUCT SPEC	KIT, PLUG, SHIELDING HARDWARE, SIZE 1, 9 POSN, HDE-20, AMPLIMITE	
		APPLICATION SPEC		
MATERIAL		114-40002	SIZE A2	CAGE CODE 00779
SEE CALL-OUTS		WEIGHT -	DRAWING NO C=747515	RESTRICTED TO -
		CUSTOMER DRAWING	SCALE 2:1	SHEET 1 of 1

Mouser Electronics

Authorized Distributor

Click to View Pricing, Inventory, Delivery & Lifecycle Information:

[TE Connectivity:](#)

[747515-7](#)